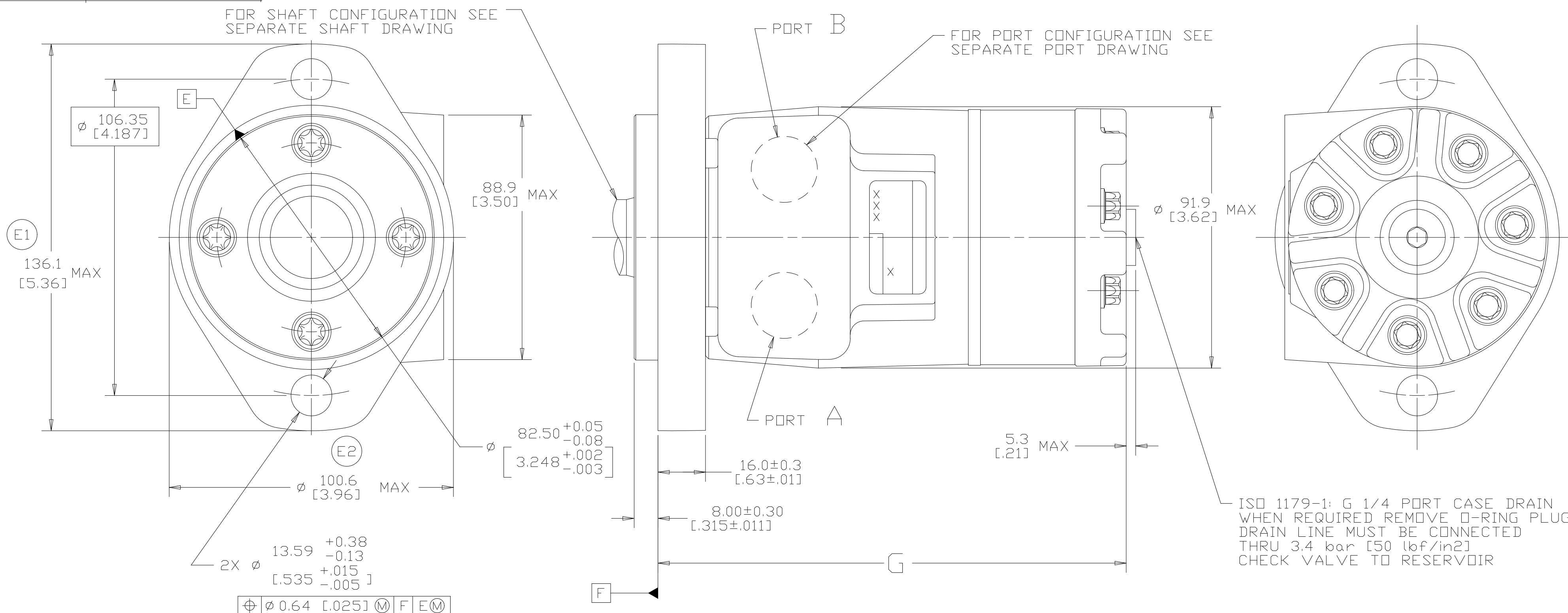


DISPL CODE	G	MAX
022	133.0	[5.24]
025	133.9	[5.27]
030	135.4	[5.33]
036	136.6	[5.38]
040	137.9	[5.43]
049	141.1	[5.56]
062	145.0	[5.71]
080	150.4	[5.92]
096	155.3	[6.11]
119	162.0	[6.38]
149	171.0	[6.73]
187	182.4	[7.18]
226	194.1	[7.64]
298	215.7	[8.49]
018	133.0	[5.24]

SYM	REVISION	BY	DATE	ECN
A	ENGINEERING RELEASE	RAF	2-8-94	M11208
B	(2B) DIM 5.3 [.21] MAX WAS 3.8 [.15] MAX	JMM	10-18-94	25844
C	-1)(3C) 88.9 [3.50] MAX WAS 84.6 [3.33] MAX -2)(2C) ϕ 91.9 [3.62] MAX WAS ϕ 87.9 [3.46] MAX	JMM	10-26-94	26147
D	(4B) ϕ 13.59+0.38/-0.13 [.535+.015/-.005] WAS ϕ 13.59 \pm 0.13 [.535 \pm .005]	AGJ	1-28-02	39853
E	-1)(4C) WAS 131.4 [5.17] MAX. -2)(4B) WAS 97.3 [3.83] MAX.	AAK	04-07-04	46856
F	-1)(4D)UPDATED TABLE FOR DISPL CODE -2)(4A)NOTE 2 MOUNTING FLANGE WAS "M"	PM	03-27-07	0004355
G	-1)(4D)UPDATED TABLE FOR DISPL CODE -2)(4C)136.1[5.36] WAS 134.1[5.28] -3)(4B) ϕ 100.6[3.96] WAS ϕ 98.6[3.88] -4) DRAWING UPDATED TO ASME Y14.5M 1994 STANDARD	AAB	06-06-11	M82377
H	(4A) NOTE 3 WAS CASE DRAIN :2...	SSP	12-26-15	0068068_1
J	(4C) ADDED DISPLACEMENT CODE 018	SMK	6-4-2021	0131587

FOR SHAFT CONFIGURATION SEE SEPARATE SHAFT DRAWING

FOR PORT CONFIGURATION SEE SEPARATE PORT DRAWING



ϕ 0.64 [.025] (M) F E (M)

NOTE

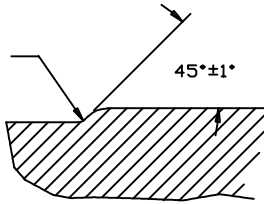
- 1 ROTATION STANDARD WHEN FACING SHAFT END OF MOTOR SHAFT TO ROTATE CLOCKWISE WHEN PORT "A" IS PRESSURIZED COUNTERCLOCKWISE WHEN PORT "B" IS PRESSURIZED

REVERSE WHEN FACING SHAFT END OF MOTOR, SHAFT TO ROTATE CLOCKWISE WHEN PORT "B" IS PRESSURIZED COUNTERCLOCKWISE WHEN PORT "A" IS PRESSURIZED
- 2 MOUNTING FLANGE
 MA = STANDARD 2 BOLT: ϕ 82.50 [3.248] X 8.13 [0.320] PILOT ϕ 13.59 [0.535] HOLES ON ϕ 106.35 [4.187] BOLT CIRCLE WITHOUT O-RING GROOVE
- 3 CASE DRAIN
 02 = G 1/4 PORT (END CAP)

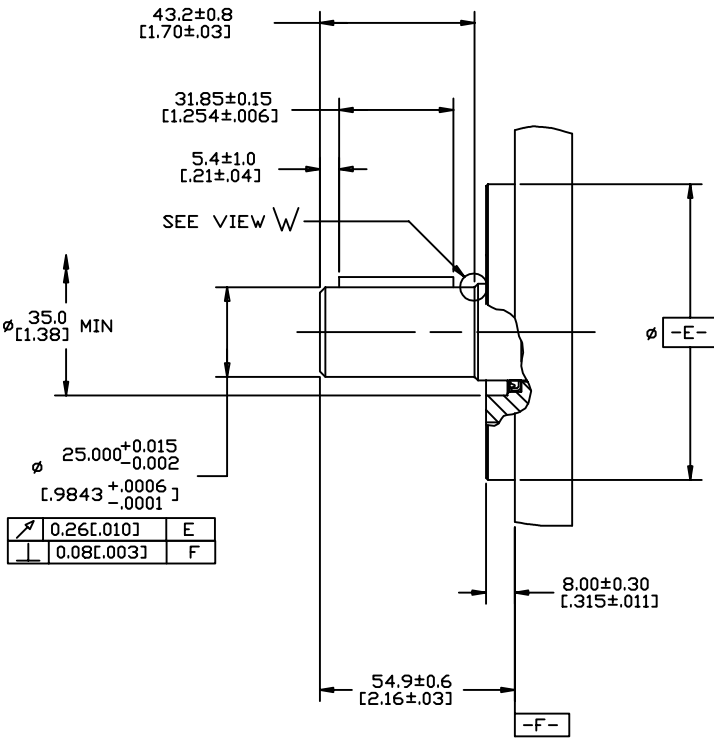
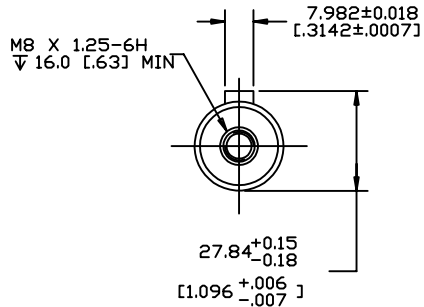
REVIEWED FOR CLASSIFICATION PER ESP-042

UNLESS OTHERWISE SPECIFIED ALL DIMENSIONS ARE IN INCHES		DRAWING BASED ON ASME Y14.5M-1994	
MILLIMETERS (INCHES)	<input type="checkbox"/>	THE REPRODUCTION, DISTRIBUTION AND UTILIZATION OF THIS DOCUMENT AS WELL AS THE COMMUNICATION OF ITS CONTENTS TO OTHER WITHOUT EXPLICIT AUTHORIZATION IS PROHIBITED. OFFENDERS WILL BE HELD LIABLE FOR THE PAYMENT OF DAMAGES. ALL RIGHT RESERVED IN THE EVENT OF THE GRANT OF A PATENT, UTILITY MODEL OR DESIGN. (PER ISO 16016)	
TOLERANCES	<input checked="" type="checkbox"/>		
.X ± ----			
.XX ± ----		DRAWN BY/DATE	RAF 2/4/94
.XXX ± ----		CHECKED BY/DATE	SDR 2/23/94
< ± .---		ENGRG BY/DATE	RVA 3/3/94
UNSPECIFIED RADII ARE:		METALLURGY BY/DATE	----
----		TITLE	
UNSPECIFIED DRAFT ANGLES ARE:		T MOTOR INSTALLATION	
----		MICROINCHES (MICROMETERS)	<input type="checkbox"/>
C SIZE	<input checked="" type="checkbox"/>	NUMBER	A-821-019
THIRD ANGLE PROJECTION		SCALE	1/1 SHEET 1 OF 1
DO NOT SCALE		ARITHMETICAL AVERAGE	<input checked="" type="checkbox"/>

R 0.51±0.25
[.020±.010]



VIEW W
SCALE 5/1



REV	DESCRIPTION	BY	DATE	ECN
A	ENGINEERING RELEASE	RAF	5/11/93	24074
B	(2B) DIM 54.9±0.5 [2.16±.02] WAS 54.4±0.8 [2.14±.03]	JMM	10/18/94	25844
C	(3A)ADDED SHAFT OPTION 52	AGJ	9-15-95	M14167
D	(3A)ADDED OPTION "V" TO NOTE 2	RAF	10-24-95	27432
E	(4D)ADDED VIEW "W"	AAK	7/08/2005	M64867B
F	(4D) DIM R 0.51±0.25[.020±.010] WAS R.020±.010	PM	8/05/2005	52410
G	-1)(2B)54.9±0.6 [2.16±.03] WAS 54.9±0.5 [2.16±.02] -2)(3A) NOTE 1 REMOVED OPTION "52" -3)(3A) NOTE 2 WAS "MOUNTING TYPE: OPTION M & V" -4)(4C)... V 16.0 (.63) WAS V 18.0 (.71) -5)(2A) ADDED C OF C NOTE -6) (3C) (.21±.04) WAS (.213±.040) -7)(2B) 8.00±0.30 WAS 8.0±0.3	CSG	06/10/2011	M79365

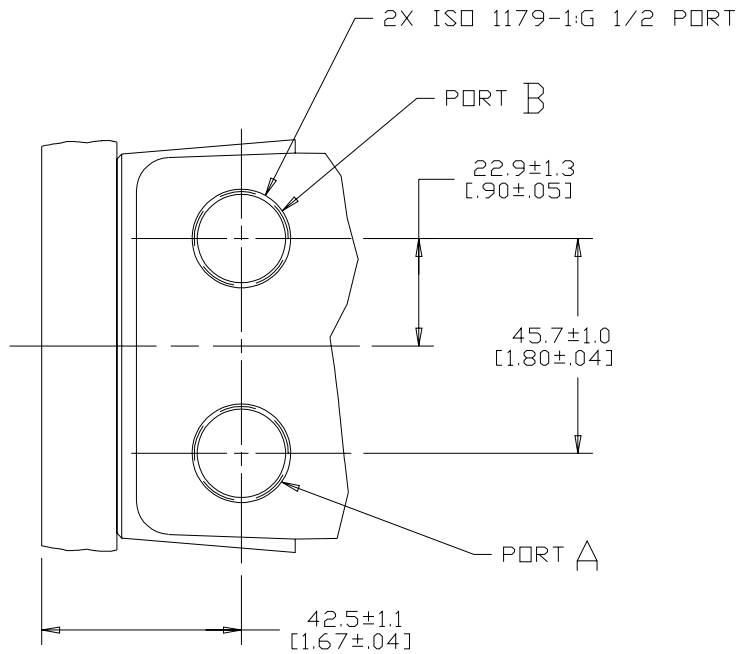
NOTE

- 1 OUTPUT SHAFT: OPTION 39
- 2 MOUNTING TYPE: OPTION MA, MN, NA

REVIEWED FOR CLASSIFICATION PER ESP-042

UNLESS OTHERWISE SPECIFIED ALL DIMENSIONS ARE IN INCHES <input type="checkbox"/> MILLIMETERS <input checked="" type="checkbox"/>		DRAWING BASED ON ANSI Y14.5M-1982	
TOLERANCES X ± ---- XX ± REF XXX ± ONLY ∠ ± ----		THE REPRODUCTION, DISTRIBUTION, AND UTILIZATION OF THIS DOCUMENT, AS WELL AS THE COMMUNICATION OF ITS CONTENTS TO OTHERS WITHOUT EXPLICIT AUTHORIZATION IS PROHIBITED. OFFENDERS WILL BE HELD LIABLE FOR THE PAYMENT OF DAMAGES. ALL RIGHTS RESERVED IN THE EVENT OF THE GRANT OF A PATENT, UTILITY MODEL, OR DESIGN. (PER ISO 15918)	
UNSPECIFIED RADII ARE ----		DRAWN BY/DATE RAF 5/13/93	MATERIAL/HEAT TREAT
UNSPECIFIED DRAFT ANGLES ARE ----		CHECKED A JOHNSON BY/DATE 5-24-93	TITLE SHAFT INSTALLATION
C-SIZE		ENGR R ANDERSON BY/DATE 5-25-93	
THIRD ANGLE PROJECTION		METALLURGY BY/DATE	MICROINCHES <input type="checkbox"/> NUMBER MILLIMETERS (DECIMALS) <input type="checkbox"/> A-724-039
DO NOT SCALE		SCALE 1/1	




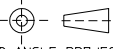


REV	DESCRIPTION	BY	DATE	ECN
A	ENGINEERING RELEASE	RAF	5/11/93	24074
B	ADDED OPTION V TO NOTE 2	GCB	6-15-98	31324
C	ADDED OPTION Z TO NOTE 2	AGJ	1-11-01	37124
D	-1>PORT TYPE OPTION WAS "E" -2>MOUNTING TYPE OPTION WAS "M","V" OR "Z" -3>REMOVED MOUNTING TYPE "V" AND "Z"	SSD	03-27-07	0004356
E	-1>42.5±0.6 (1.67±.02) WAS 42.7±0.5 (1.67±.02) -2>44.5±0.4 (1.75±.02) WAS 44.4±0.3 (1.75±.01) -3>NOTE 1 ...OPTION AE WAS ...OPTION AF -4>REMOVED -F-	CSG	06/10/2010	M79365
F	-1>REVISED PICTORIALLY -2>NOTE 1 ...OPTION AF WAS ...OPTION AE -3>42.5±1.1 [1.67±.04] WAS 42.5±0.6 [1.67±.02] -4>22.9±1.3 [1.90±.05] WAS 22.9±0.5 [1.90±.02] -5>UPDATED DRAWING AS PER ASME Y14.5-2009 STANDARDS.	JVD	12-22-15	M99104

NOTE

- 1 PORT TYPE: OPTION AF
- 2 MOUNTING TYPE: OPTION MA

 REVIEWED FOR CLASSIFICATION PER ESP-042

UNLESS OTHERWISE SPECIFIED ALL DIMENSIONS ARE IN INCHES <input type="checkbox"/> MILLIMETERS (INCHES) <input checked="" type="checkbox"/>	DRAWING BASED ON ASME Y14.5-2009		
	THE REPRODUCTION, DISTRIBUTION, AND UTILIZATION OF THIS DOCUMENT, AS WELL AS THE COMMUNICATION OF ITS CONTENTS TO OTHERS WITHOUT EXPLICIT AUTHORIZATION IS PROHIBITED. OFFENDERS WILL BE HELD LIABLE FOR THE PAYMENT OF DAMAGES. ALL RIGHTS RESERVED IN THE EVENT OF THE GRANT OF A PATENT, UTILITY MODEL, OR DESIGN. (PER ISO 16016)		
TOLERANCES .X ± ---- .XX ± ---- .XXX ± ---- < ± ----	DRAWN BY/DATE RAF 4/8/93 CHECKED BY/DATE AGJ 5-24-93 ENGRG BY/DATE RA 5-25-93 METALLURGY ---- BY/DATE	MATERIAL/HEAT TREAT TITLE PORT INSTALLATION	
UNSPECIFIED RADII ARE UNSPECIFIED DRAFT ANGLES ARE	 THIRD ANGLE PROJECTION	MICROINCHES <input type="checkbox"/> MICROMETERS (MICROINCHES) <input type="checkbox"/> ARITHMETICAL AVERAGE <input checked="" type="checkbox"/>	NUMBER A-110-019 SCALE 1/1 SHEET 1 OF 1
B SIZE	DO NOT SCALE		