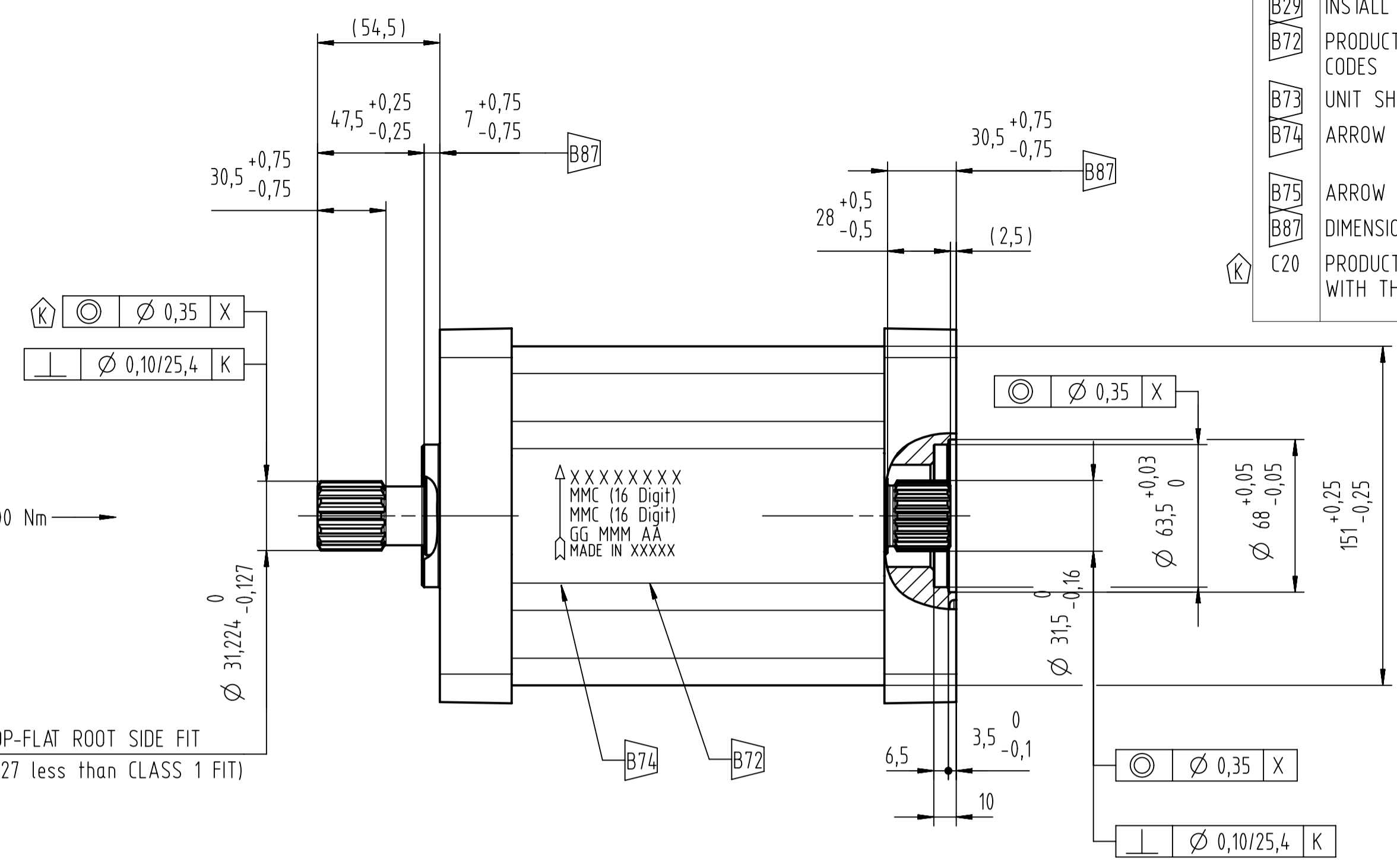
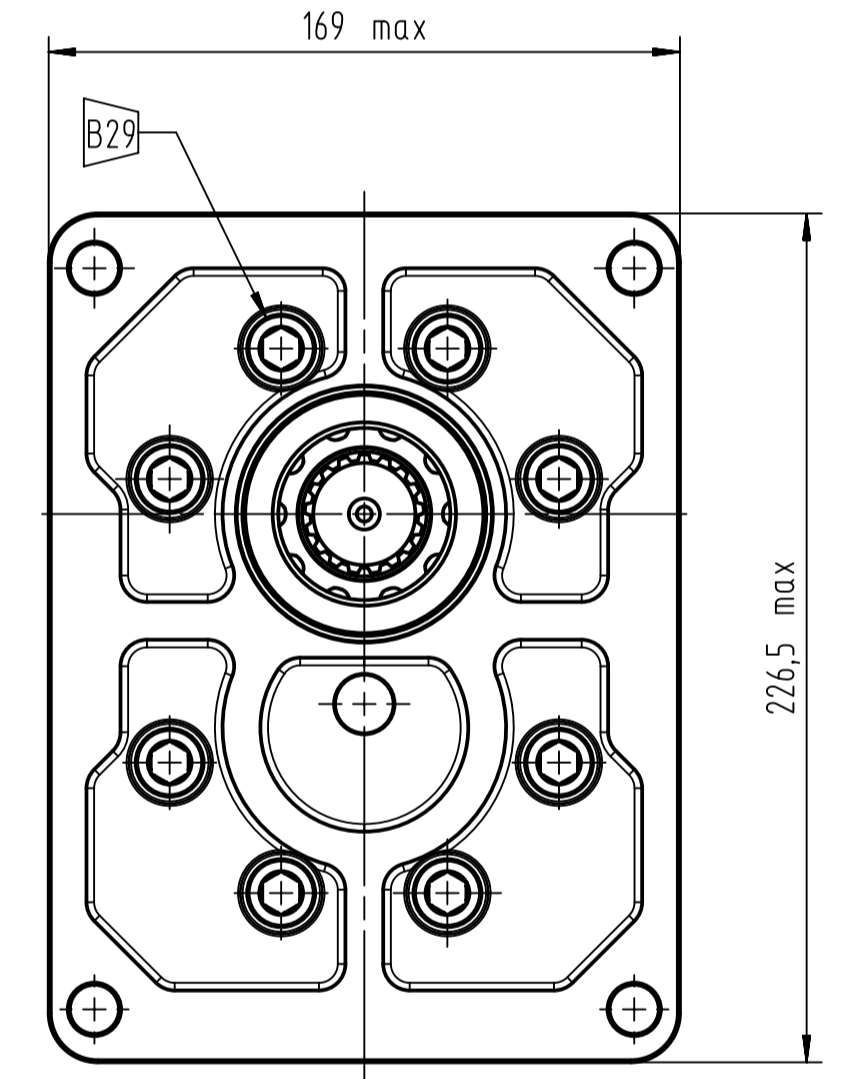
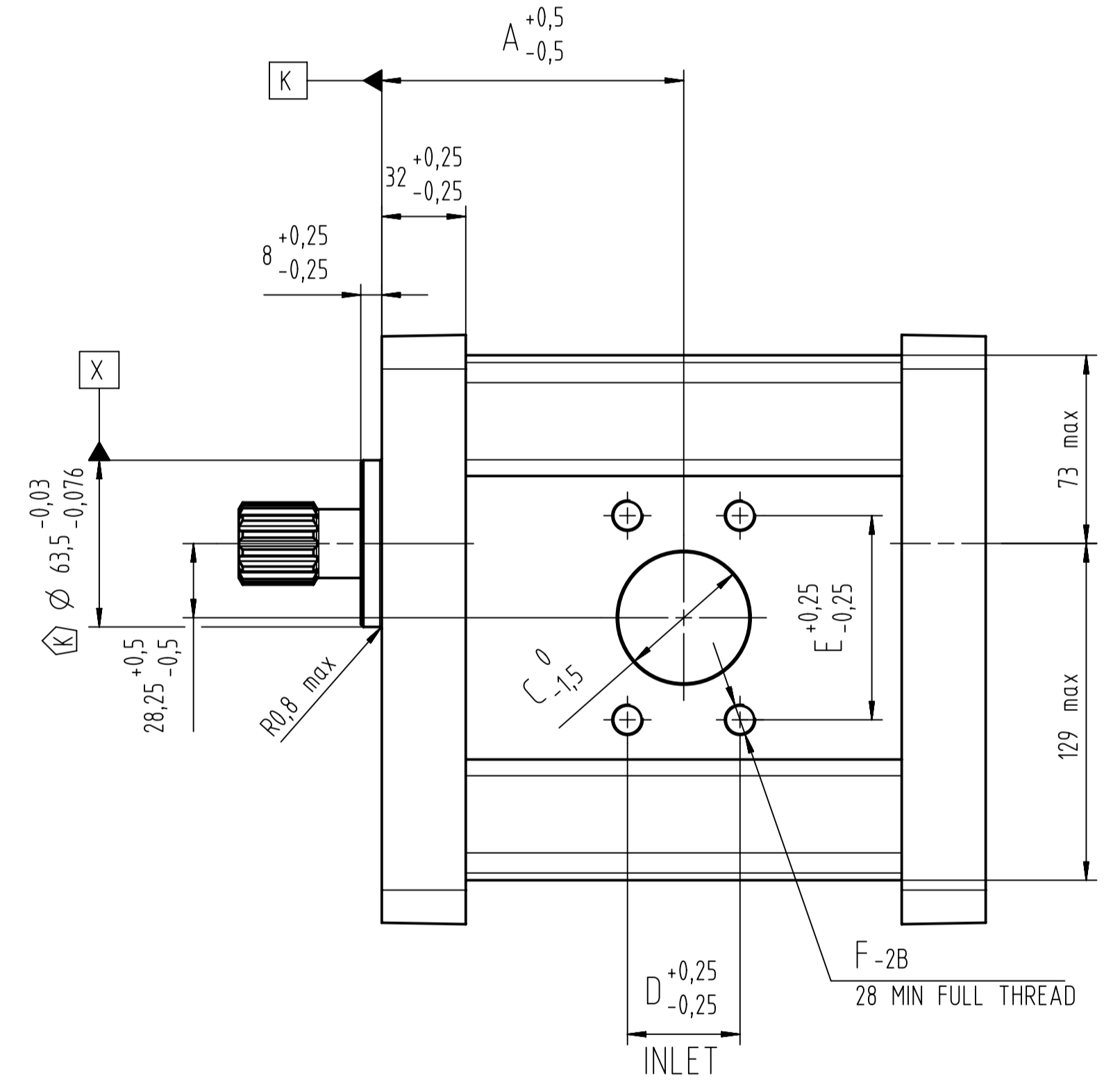
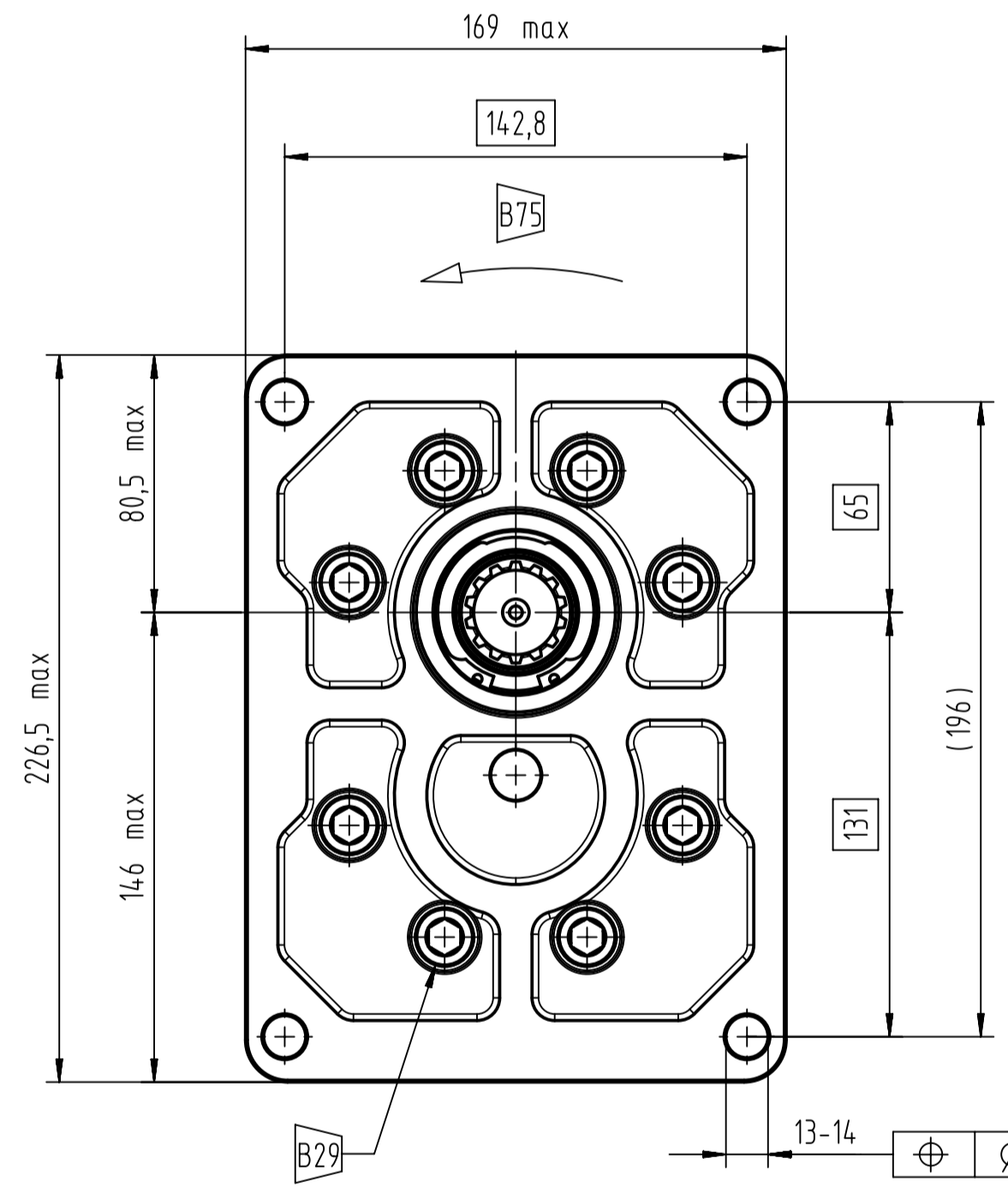
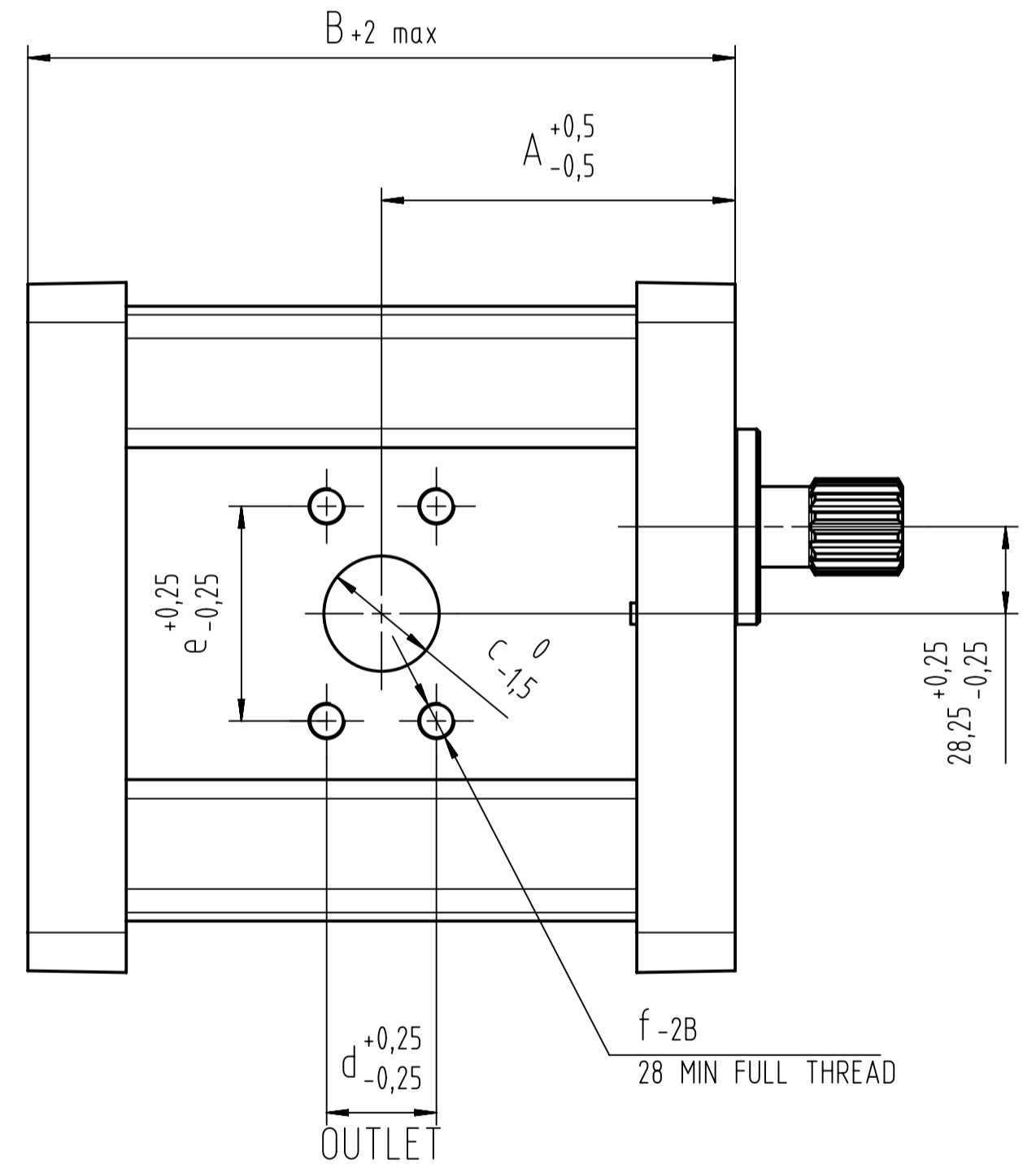


SYSTEM SPECIFICATIONS:
 -Hydraulic fluid per DIN 51524 part 2 (HLP) and part 3 (HVLP).
 -Recommended operating viscosity 12 to 60 cSt; max 1600 at cold start.
 -Fluid temperature: 80°C max continuous; 90°C max peak; -20°C min at cold start
 -Recommended cleanliness level: 18/13 per UNI ISO 4406. Recommended filtration B_{15,25}>75 per ISO 4572)
 -Inlet pressure: 0,7-4 bar absolute (max vacuum 0,3 bar; max inlet pressure 3 bar)
NOTES
 -peak pressure is intended as the maximum relief valve overshoot

NO	NOTE UNLESS OTHERWISE SPECIFIED
A06	ALL DIMENSIONS ARE METRIC (MILLIMETERS)
B29	INSTALL NOTED SCREW WITH 75-90 Nm TORQUE
B72	PRODUCT IDENTIFICATION AND MANUFACTURING DATE CODES
B73	UNIT SHOWN
B74	ARROW INDICATES OUTLET (HIGH PRESSURE) SIDE OF PUMP.
B75	ARROW SHOWS DRIVE SHAFT ROTATION
B87	DIMENSION FROM FLANGE TO SHOULDER ON DRIVESHAFT.
C20	PRODUCTION TEST AS PER INTERNAL SPEC. AQST RELATED WITH THE PRODUCT PN



SPLINE SAE J498-14T-12/24DP-FLAT ROOT SIDE FIT
 (Circular tooth thickness 0,127 less than CLASS 1 FIT)



MARKET CODE	PART NUMBER	CUSTOMER PART NUMBER	A	B	INLET PORT				OUTLET PORT				DISPLACEMENT (cc/rev)	MAXIMUM SPEED (rev/min)	PEAK PRESSURE (bar)	RATED PRESSURE (bar)	MIN SPEED AT RATED PRESSURE (rev/min)
					C	D	E	F	c	d	e	f					
TAW4NN/200LN31RDNNA6A5SDIN/NNNNN	11074608		115	230	50	77,78	42,88	1/2-13UNC	37,5	69,85	35,71	1/2-13UNC	192,5	2400	160	150	480

CUSTOMER IMPORTANCE TABLE			FOR INTERNAL USE ONLY			DATE	NAME	MATERIAL/SPECIFICATION
SYMBOL	DESCRIPTION	REQUIREMENT	-	SP011351	08-08-2017	AP	DESIGNER	RAW PART NO
KEY	SAFETY	ERROR PROOF	REV	AUTH	DATE	NAME	ENGINEER	DRAWING INTERPRETATION PER GS-0074
PROCESS	KEY	Cpk ≥ 1,33	AUTHORIZATION DOC:			THE REPRODUCTION, DISTRIBUTION AND UTILIZATION OF THIS DOCUMENT AS WELL AS THE COMMUNICATION OF ITS CONTENTS TO OTHERS WITHOUT EXPLICIT AUTHORIZATION IS PROHIBITED. OFFENDERS WILL BE HELD LIABLE FOR THE PAYMENT OF DAMAGES. ALL RIGHTS RESERVED IN THE EVENT OF THE GRANT OF A PATENT, UTILITY MODEL OR DESIGN. (PER ISO 16016)		
NONE	STANDARD	Cpk ≥ 1	CIT IS REFERRING TO GLOBAL STANDARD GS-0004			Member of the Danfoss Group TUROLLA fast forward thinking		
SCALE		0.5:1	NO		70305992	REV		
SHEET		1 OF 1	NO		70305992	REV		