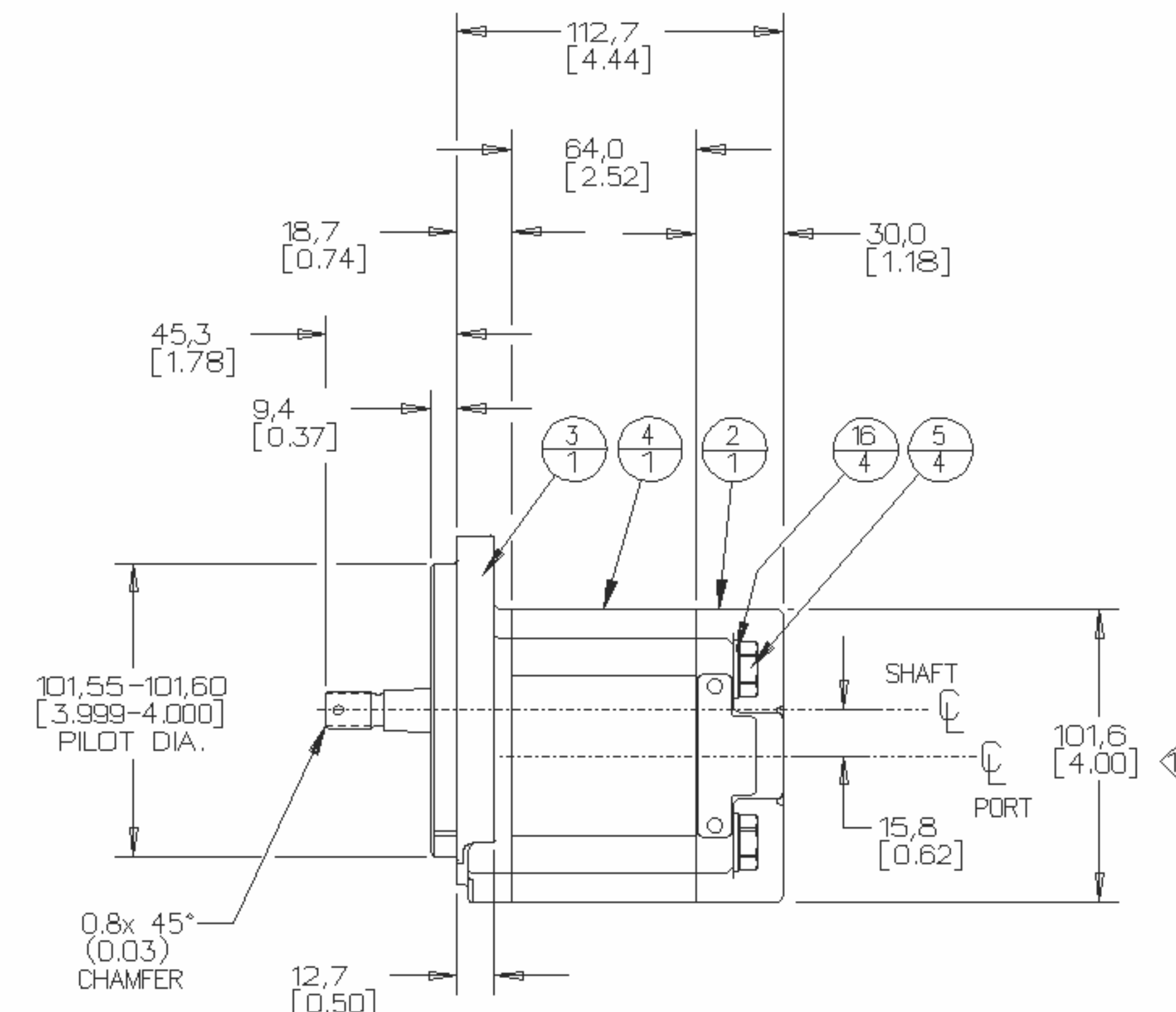


THIS UNIT ASSEMBLED FOR CW ROTATION



NOTE:
 ▽ FOR ASSEMBLY INSTRUCTIONS SEE DWG NO. "11-B1" "P11 PUMP ASSEMBLY INSTRUCTIONS".

16	3913782231	4	WASHER, FLAT
15	3912883181	1	SEAL, SHAFT
14	3912882160	2	SEAL, BACK UP
13	3912882159	2	SEAL, CHANNEL
12	3912882158	2	SEAL, O-RING
11	3912681541	1	SNAP RING, INTERNAL
10	3912185092	2	THRUST BLOCK, P11
9	3912183227	1	NAME PLATE, CIC
8	3912080078	2	PIN, DOWEL
7	3911451163	1	NUT, SLOTTED
6	3911432004	2	DRIVE, SCREW
5	3911401543	4	SCREW, HEX HD GR 8.8
4	3328314100	1	HOUSING, GEAR, 14CC
3	3325021203	1	HOUSING, SEC
2	3323031312	1	HOUSING, PEC
1	3322914622	1	SET, GEAR SHAFT
ITEM	PART NO.	REQ'D	DESCRIPTION

THIRD ANGLE PROJECTION	
EXP. NO.	---
FIRST USED	1B ADDED CUST PN 317020A1
98-02-910	1A ADD SNAP RING TO BOM.
3329110449	SYM REVISIONS 032798 GLS 98-03-913

NOTE: UNIT TO BE PAINTED BLACK

317020A1

This print is the property of COMMERCIAL INTERTECH CORP., Youngstown Ohio and is loaned to the recipient subject to return upon demand. Its contents are confidential and must not be submitted to outside parties for use or examination.

Commercial Intertech
 Vehicle Systems Division
 Minneapolis, MN 55428 USA

MATERIAL:	REV DATE	DRWN BY	DATE	CHKD BY	DATE	SCALE
---	032798	GLS	030298	FRI	030298	0.500
H.E. STD:	MASS	DIMENSION ARE (MM)		C		SHEET
---	4.645 kg	(INCH)		3329110449		1 OF 1
Copyright 1998 Commercial Intertech Corp.						