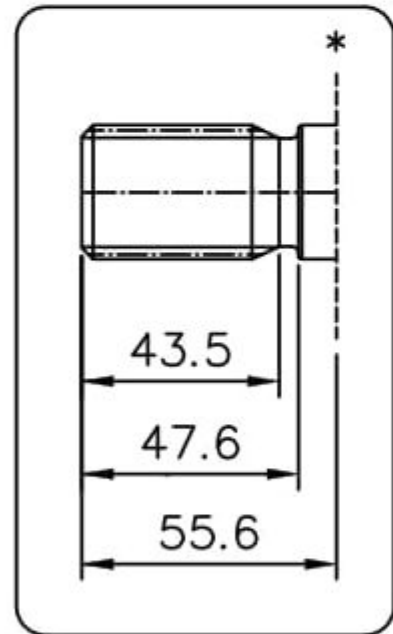
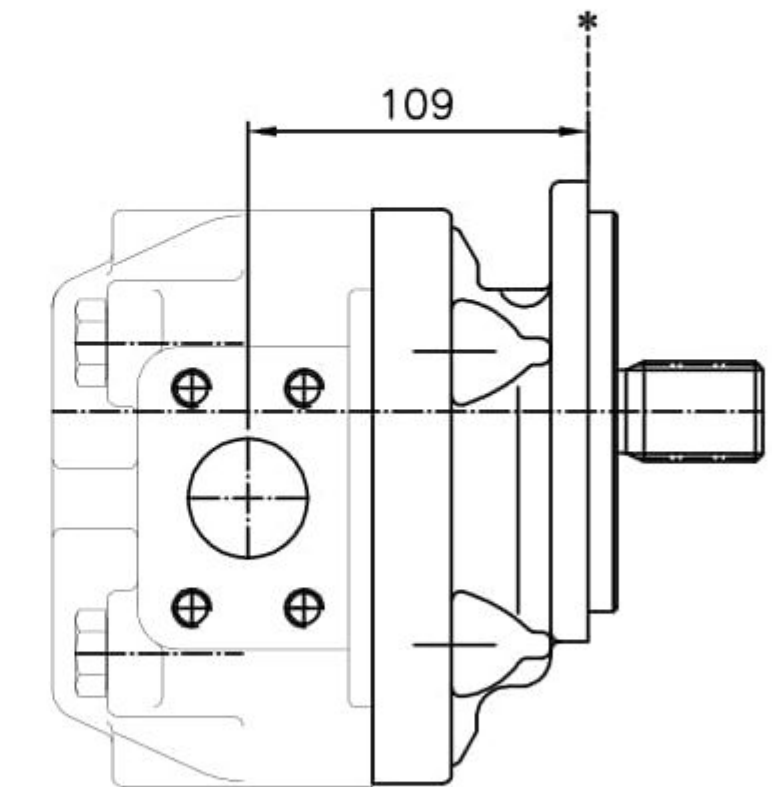
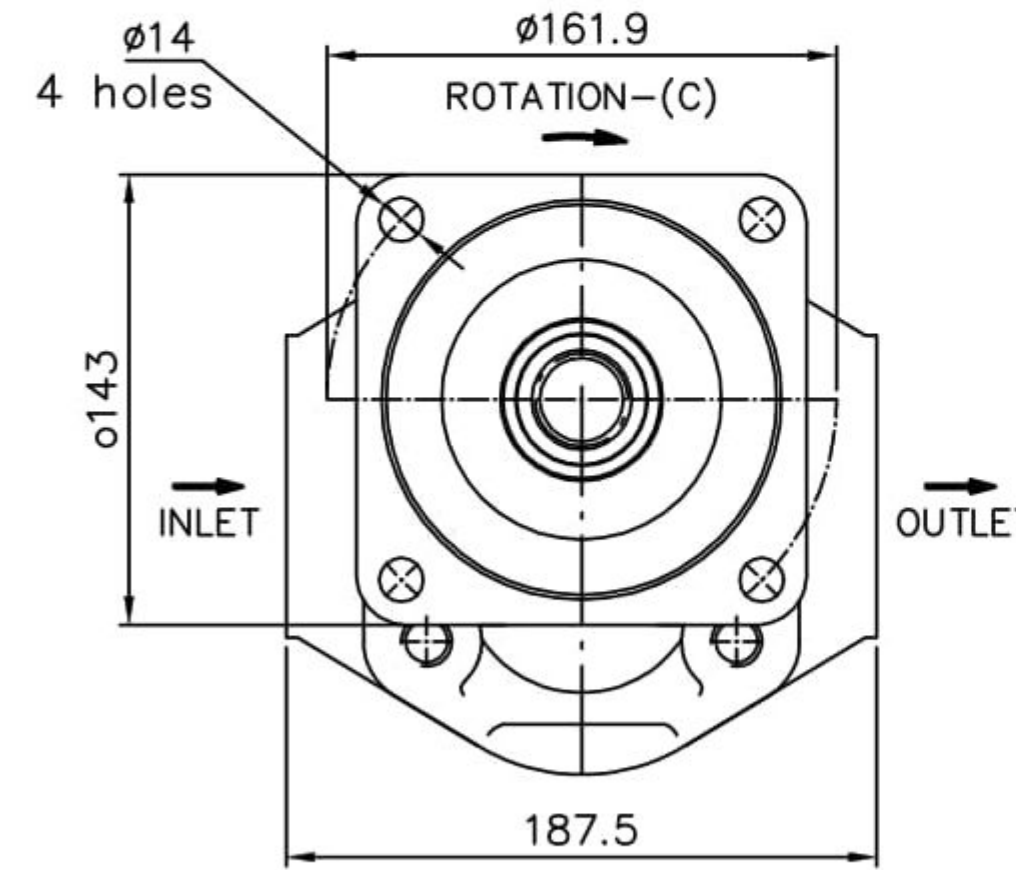
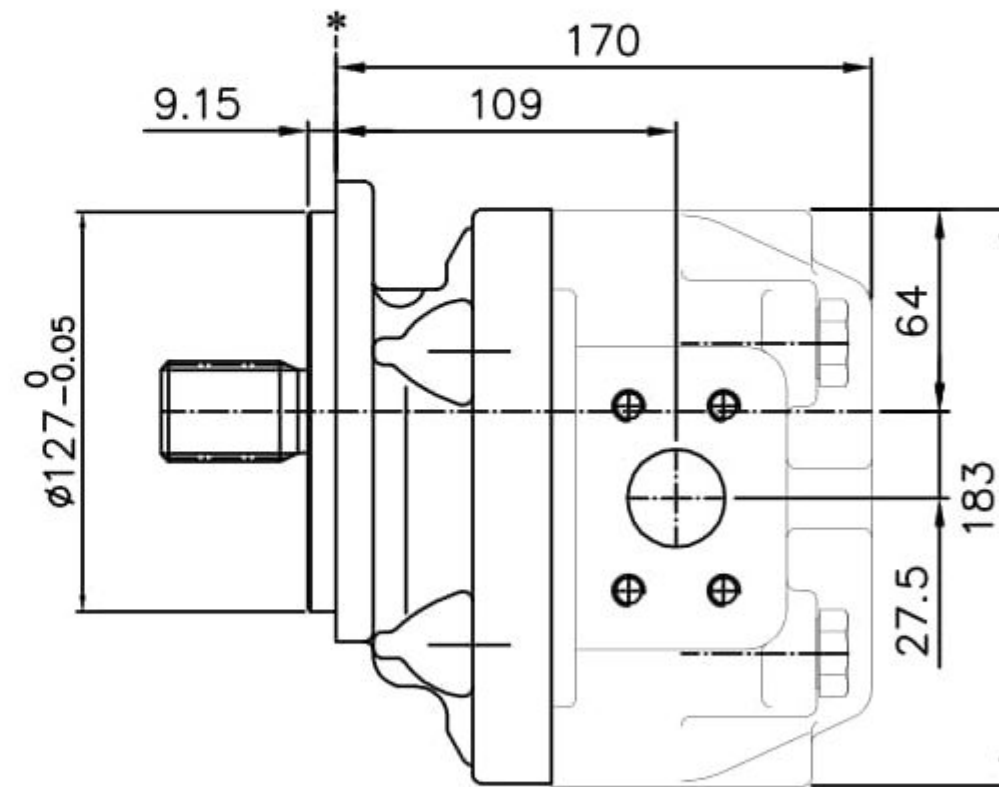


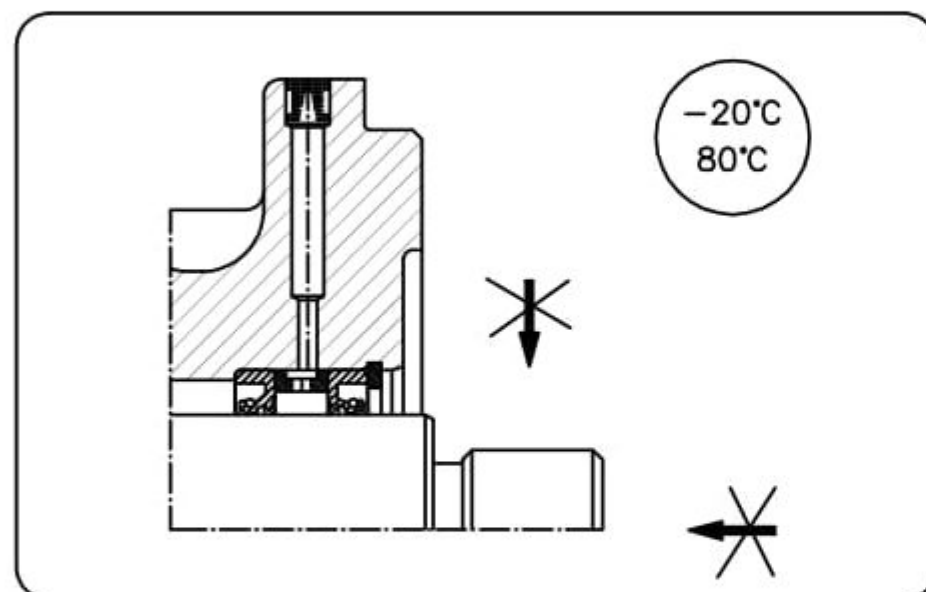
DRIVE SHAFT
code C



14 TOOTH INVOLUTE SPLINE 1-1/4" SAE C
side fit, flat root
diametral pitch 12/24
pressure angle 30°
number of teeth 14
major diameter 31.20/31.12

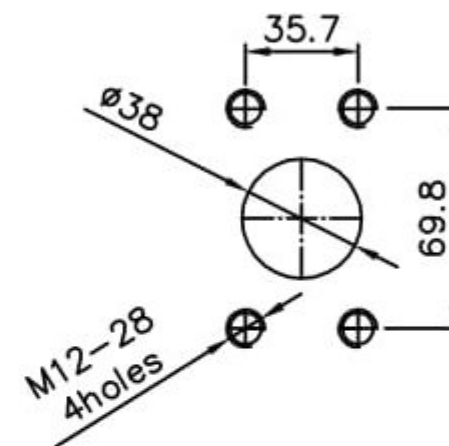


SHAFT SEAL DESIGN
code C

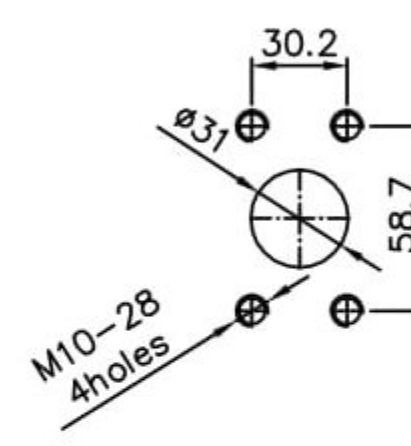


PORTS – code B26

INLET



OUTLET



GENERAL DATA

displacement – 70,1 ccm/rev
max. working pressure – 210 bar
speedrange – 600 – 2700 rpm
hydraulic fluid temperature range from +20°C to +80°C
fluid filtration – 10μ
rotation – clockwise

GEAR PUMP PC2210C5B26C
(P-216C)

* – standard flange mounting face