

**2PL Group 3 Dowty/Ultra Pattern Gear Pumps - Ordering Code, Seal Kits and Specifications**

**2PL - Ordering Code**

Use this chart to compile your ordering code. For example:

**2PL 090 C T D F A N** (28.77 cc/rev, clockwise, T shaft, D flange, F port, front/intermediate section pump, nitrile shaft seal)

**2PL 090 C A F A** (38.77 cc/rev, clockwise, F port, intermediate section)

Intermediate sections can be used as rear sections.

**Front/Single Pump**

<b>2PL</b>	<b>\$\$\$</b>	<b>*</b>	<b>?</b>	<b>!</b>	<b>£</b>	<b>%</b>	<b>&amp;</b>
------------	---------------	----------	----------	----------	----------	----------	--------------

**Intermediate/Rear Section**

<b>2PL</b>	<b>\$\$\$</b>	<b>*</b>	<b>A</b>	<b>£</b>	<b>%</b>
------------	---------------	----------	----------	----------	----------

<b>\$\$\$ Capacity</b>	<b>* Rotation</b>	<b>? Shaft</b>	<b>! Flange</b>	<b>£ Port</b>	<b>% Model</b>	<b>&amp; Shaft Seal</b>
<b>050</b> 16.66 cc/rev	<b>A</b> Anti-Clockwise	<b>P</b> SAE B 7/8" Parallel	<b>C</b> 50.75mm Pilot 4 bolt (11.5mm holes)	<b>C</b> Dowty (metric tappings)	<b>B</b> Single/Rear Pump	<b>N</b> Nitrile
<b>070</b> 22.71 cc/rev	<b>C</b> Clockwise	<b>Q</b> SAE B Short 13 Tooth Spline	<b>D</b> 50.75mm Pilot 4 bolt (8.7mm holes)	<b>E</b> SAE Split Flange (metric tappings) (1" inlet, 3/4" outlet)	<b>A</b> Modular front/Intermediate section	<b>E</b> Double Nitrile
<b>090</b> 28.77 cc/rev		<b>S</b> SAE B 13 Tooth Spline	<b>H</b> 66.7mm Pilot 6 bolt round	<b>F</b> Dowty		<b>V</b> Viton
<b>105</b> 33.23 cc/rev		<b>T</b> 1:8 Taper	<b>S</b> SAE B 101.6mm Pilot 2 bolt	<b>S</b> SAE Split Flange (1" inlet, 3/4" outlet)		<b>W</b> Double Viton
<b>120</b> 37.85 cc/rev			<b>X</b> SAE A 82.6mm Pilot Necked	<b>V</b> Large SAE Split Flange (1 1/4" inlet, 1" outlet)		
<b>146</b> 45.50 cc/rev						
<b>158</b> 49.35 cc/rev						

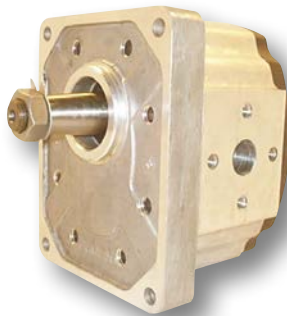
**2PL - Seal Kit Ordering Codes**

with Single Nitrile shaft seal: **UP2PA01N**

with Double Nitrile shaft seal: **UP2PA01E**

with Single Viton shaft seal: **UP2PA01V**

with Double Viton shaft seal: **UP2PA01W**



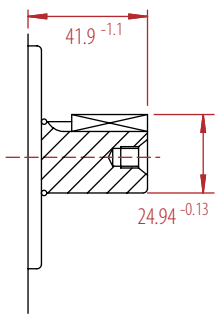
**2PL - Specifications**

<b>Pump model</b>		<b>050</b>	<b>070</b>	<b>090</b>	<b>105</b>	<b>120</b>	<b>146</b>	<b>158</b>
<b>Displacement</b>	cc/rev	16.66	22.71	28.77	33.23	37.85	45.50	49.35
	in <sup>3</sup> /rev	1.02	1.39	1.76	2.03	2.31	2.78	3.01
<b>Maximum Continuous Pressure</b>	bar	250	250	250	250	250	210	210
	psi	3625	3625	3625	3625	3625	3045	3045
<b>Maximum Transient Pressure</b>	bar	300	300	300	300	300	250	250
	psi	4350	4350	4350	4350	4350	3625	3625
<b>Speed at Maximum Continuous Pressure</b>	min rpm	500	500	500	500	500	500	500
	max rpm	2500	2500	2500	2500	2500	2500	2500

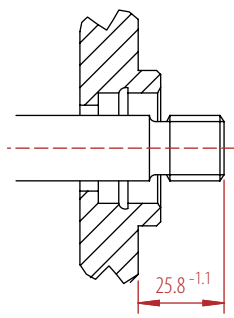
**2PL Group 3 Dowty/Ultra Pattern Gear Pumps - Shafts, Mounting Flanges and Ports**

**2PL - Shaft Type**

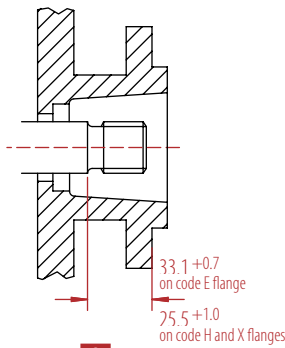
all measurements are in millimetres (mm) unless otherwise stated



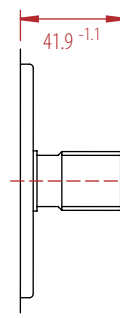
**P**  
SAE B 7/8" Parallel



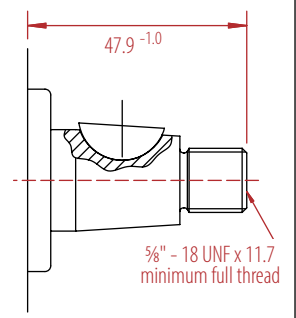
**Q**  
(for D and S FLANGES)  
SAE B Short 13 Tooth Spline



**Q**  
(for E, H and X FLANGES)  
SAE B Short 13 Tooth Spline



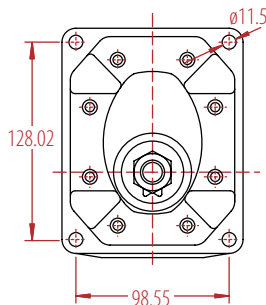
**S**  
SAE B 13 Tooth Spline



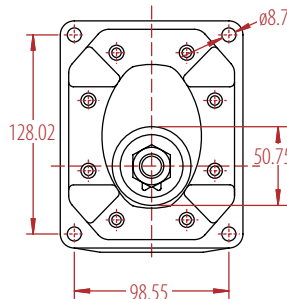
**T**  
1:8 Taper

**2PL - Mounting Flange Type**

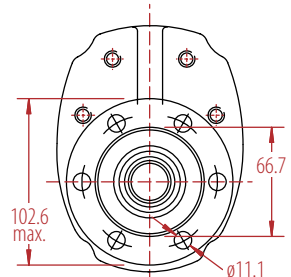
all measurements are in millimetres (mm) unless otherwise stated



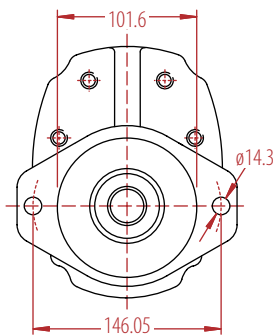
**C**



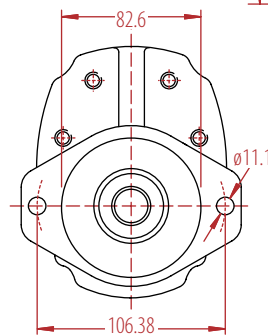
**D**



**H**

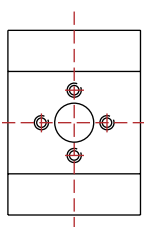


**S**



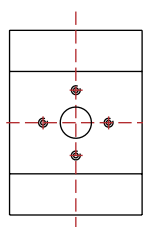
**X**

**2PL - Ports**

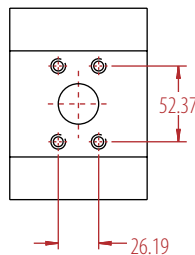


Inlet

**C and F**  
Dowty

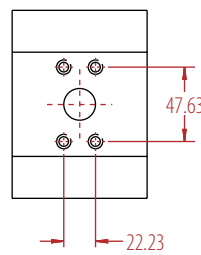


Outlet

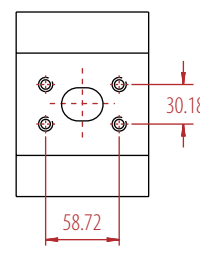


Inlet 1" SAE

**E and S**  
SAE Split Flange

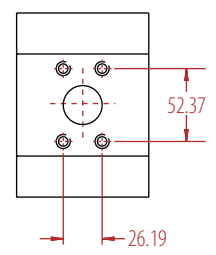


Outlet 3/4" SAE



Inlet 1 1/4" SAE

**V**  
SAE Split Flange



Outlet 1" SAE