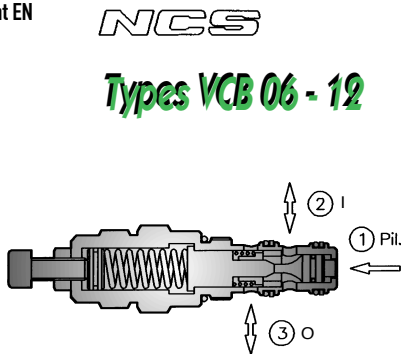
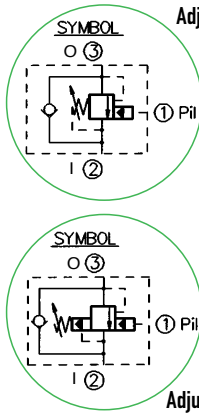
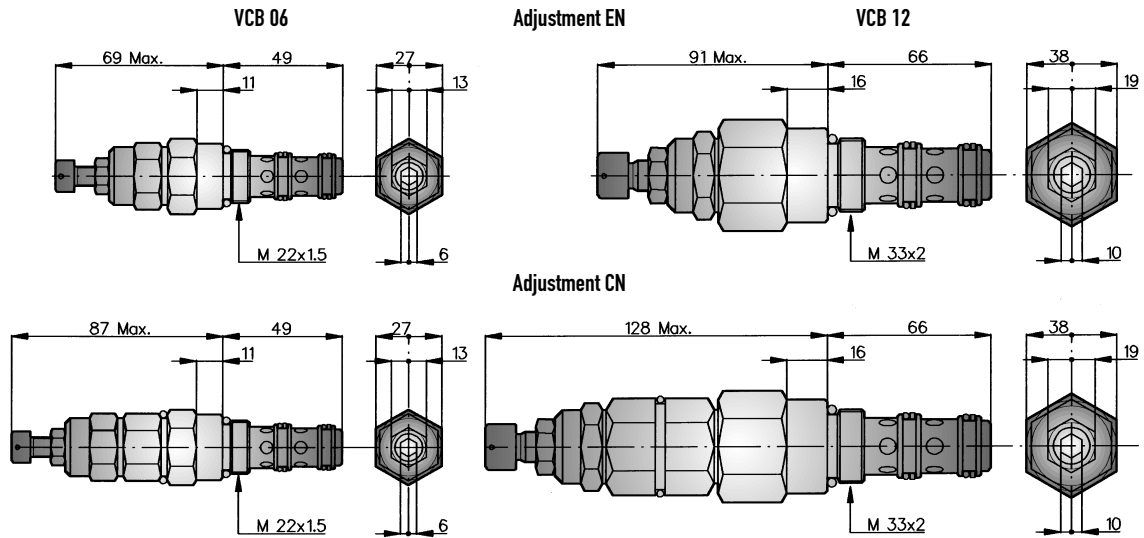


COUNTERBALANCE VALVES WITH FREE REVERSE FLOW CHECK



SIZE		06	12
NOMINAL PORT SIZE	DN	8	12
MAX FLOW RATE	l/min	60	140
	US gpm	16	37
MAX PRESSURE	bar	350	350
	psi	5000	5000
PILOT RATIO	A	7.1:1	6.9:1
	B	4.1:1	4.7:1
CAVITY NUMBER		00.95 056	070
NORMALIZED CAVITY	NCS	06/3	12/3
MAX TIGHTENING TORQUE	Nm	50	70
WEIGHT kg	ADJUSTMENT EN	0.210	0.700
	ADJUSTMENT CN	0.290	0.930
REF			
CAVITY DIMENSIONS			11.450

DIMENSIONS (mm)



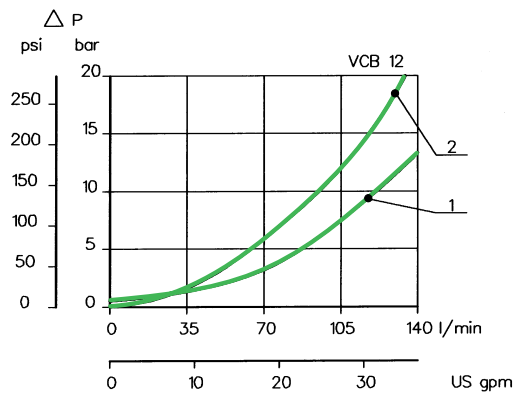
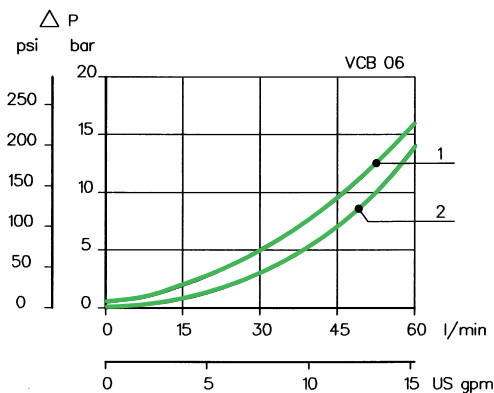
CHARACTERISTIC OPERATING CURVES

Measurements effected at 20°C ambient temperature with mineral oil having viscosity of 26 cSt at 50°C.

Cartridge only.

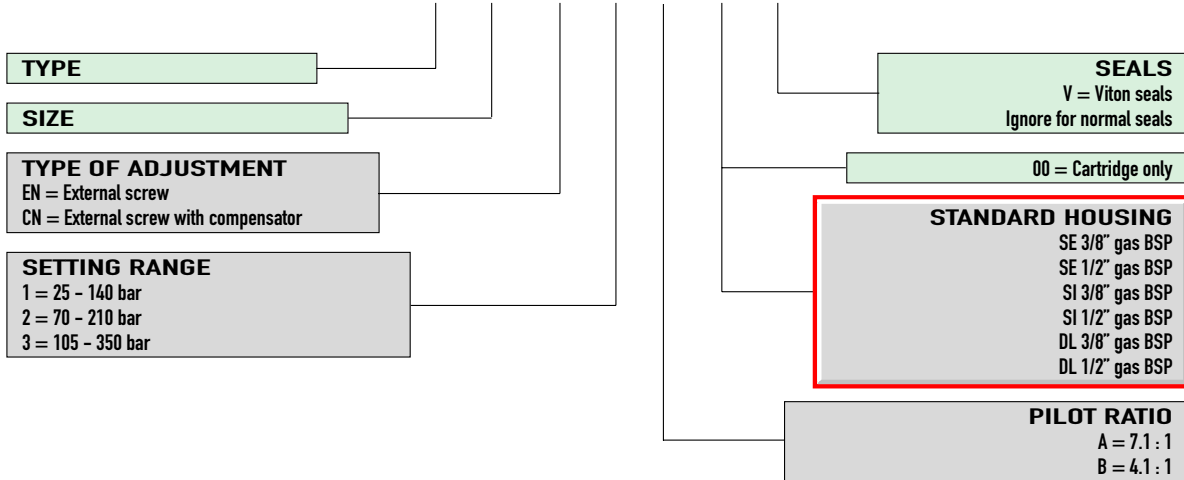
1: Free flow from ② → ③

2: Piloted fully open, flow from ③ → ②



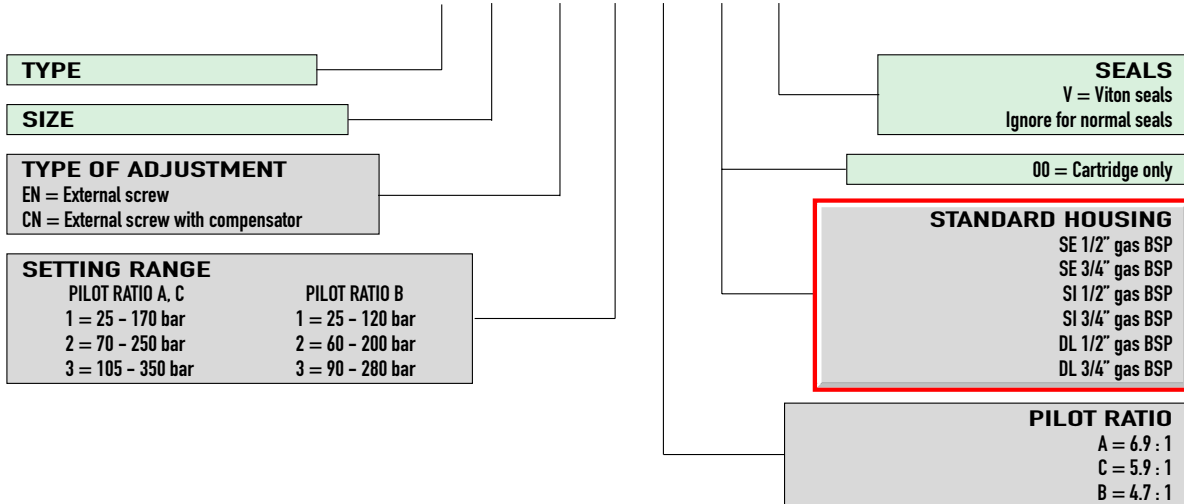
EXAMPLE OF ORDER DESIGNATION VCB 06

VCB 06 / EN - 2 - A - 00 - V



EXAMPLE OF ORDER DESIGNATION VCB 12

VCB 12 / EN - 2 - A - 00 - V



SPARE PARTS

Set of external seals and back-up washers
(Packs of minimum 10 sets)
VCB 06 = 230.00.007.0
VCB 12 = 230.00.013.0

SPRING ORDER NUMBERS

VCB 06 SPRINGS	VCB 12 SPRINGS
Type 1 = 81.62.012.1.9	Type 1 = 81.62.024.1.9
Type 2 = 81.62.013.1.9	Type 2 = 81.62.018.1.9
Type 3 = 81.62.034.1.9	Type 3 = 81.62.019.1.9