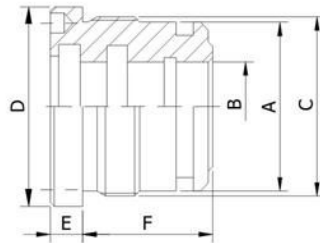


**TG**

**DŁAWNICA TG**

*Pilot boss TG*



Materiał: żeliwo G25 UNI 5007

| Oznaczenie | A * | B  | C        | D   | E  | F  |
|------------|-----|----|----------|-----|----|----|
| TG 3202027 | 32  | 20 | M 36x1,5 | 42  | 6  | 27 |
| TG 3502032 | 35  | 20 | M 39x1,5 | 45  | 8  | 32 |
| TG 3502232 | 35  | 22 | M 39x1,5 | 45  | 8  | 32 |
| TG 4002032 | 40  | 20 | M 44x1,5 | 50  | 8  | 32 |
| TG 4002232 | 40  | 22 | M 44x1,5 | 50  | 8  | 32 |
| TG 4002532 | 40  | 25 | M 44x1,5 | 50  | 8  | 32 |
| TG 4502232 | 45  | 22 | M 49x1,5 | 55  | 8  | 32 |
| TG 4502532 | 45  | 25 | M 49x1,5 | 55  | 8  | 32 |
| TG 5002535 | 50  | 25 | M 54x1,5 | 60  | 8  | 35 |
| TG 5002835 | 50  | 28 | M 54x1,5 | 60  | 8  | 35 |
| TG 5003035 | 50  | 30 | M 54x1,5 | 60  | 8  | 35 |
| TG 5003535 | 50  | 35 | M 54x1,5 | 60  | 8  | 35 |
| TG 5503035 | 55  | 30 | M 60x1,5 | 65  | 8  | 35 |
| TG 5503535 | 55  | 35 | M 60x1,5 | 65  | 8  | 35 |
| TG 6003040 | 60  | 30 | M 64x1,5 | 70  | 10 | 40 |
| TG 6003540 | 60  | 35 | M 64x1,5 | 70  | 10 | 40 |
| TG 6004040 | 60  | 40 | M 64x1,5 | 70  | 10 | 40 |
| TG 6303040 | 63  | 30 | M 68x1,5 | 73  | 10 | 40 |
| TG 6303540 | 63  | 35 | M 68x1,5 | 73  | 10 | 40 |
| TG 6303640 | 63  | 36 | M 68x1,5 | 73  | 10 | 40 |
| TG 6304040 | 63  | 40 | M 68x1,5 | 73  | 10 | 40 |
| TG 6503040 | 65  | 30 | M 69x1,5 | 75  | 10 | 40 |
| TG 6503540 | 65  | 35 | M 69x1,5 | 75  | 10 | 40 |
| TG 6504040 | 65  | 40 | M 69x1,5 | 75  | 10 | 40 |
| TG 7003040 | 70  | 30 | M 74x1,5 | 80  | 10 | 40 |
| TG 7003540 | 70  | 35 | M 74x1,5 | 80  | 10 | 40 |
| TG 7004040 | 70  | 40 | M 74x1,5 | 80  | 10 | 40 |
| TG 7004540 | 70  | 45 | M 74x1,5 | 80  | 10 | 40 |
| TG 7005040 | 70  | 50 | M 74x1,5 | 80  | 10 | 40 |
| TG 7503050 | 75  | 30 | M 80x2   | 90  | 10 | 50 |
| TG 7503550 | 75  | 35 | M 80x2   | 90  | 10 | 50 |
| TG 7504050 | 75  | 40 | M 80x2   | 90  | 10 | 50 |
| TG 7504550 | 75  | 45 | M 80x2   | 90  | 10 | 50 |
| TG 8004050 | 80  | 40 | M 84x1,5 | 90  | 10 | 50 |
| TG 8005050 | 80  | 50 | M 84x1,5 | 90  | 10 | 50 |
| TG 8003050 | 80  | 30 | M 85x2   | 92  | 10 | 50 |
| TG 8003550 | 80  | 35 | M 85x2   | 92  | 10 | 50 |
| TG 8004050 | 80  | 40 | M 85x2   | 92  | 10 | 50 |
| TG 8004550 | 80  | 45 | M 85x2   | 92  | 10 | 50 |
| TG 8005050 | 80  | 50 | M 85x2   | 95  | 10 | 50 |
| TG 8503550 | 85  | 35 | M 90x2   | 100 | 10 | 50 |
| TG 8504050 | 85  | 40 | M 90x2   | 100 | 10 | 50 |
| TG 8504550 | 85  | 45 | M 90x2   | 100 | 10 | 50 |