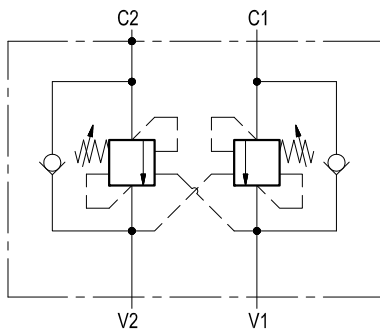


## Dual counterbalance

A-VBSO-DE-30-FC1

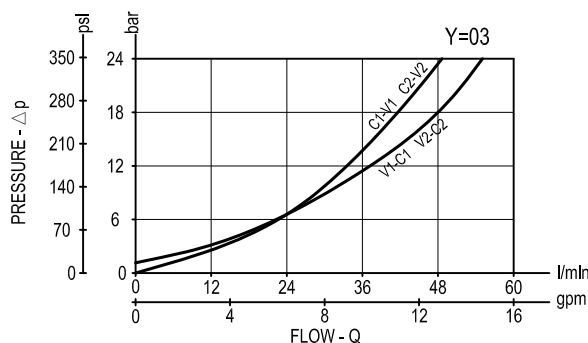
08.44.30 - X - Y - Z



### Description

It provides static and dynamic control of load by regulating the flow IN and OUT of the actuator, through ports C1 and C2. This valve module includes 2 sections, each one composed by a check and a relief valve pilot assisted by pressure in the opposite line: the check section allows free flow into the actuator, then holds the load against reverse movement; with pilot pressure applied at the line across, the pressure setting of the relief is reduced in proportion to the stated ratio until opening and allowing controlled reverse flow. Back-pressure at V1 or V2 is additive to the pressure setting in all functions. For better safety and compact assembly, the C2 port is gasket mounted directly on the actuator.

### Performance



### Technical data

#### Hydraulic

|                         |             |            |
|-------------------------|-------------|------------|
| Max. operating pressure | bar (psi)   | 350 (5000) |
| Max. flow               | l/min (gpm) | 60 (16)    |

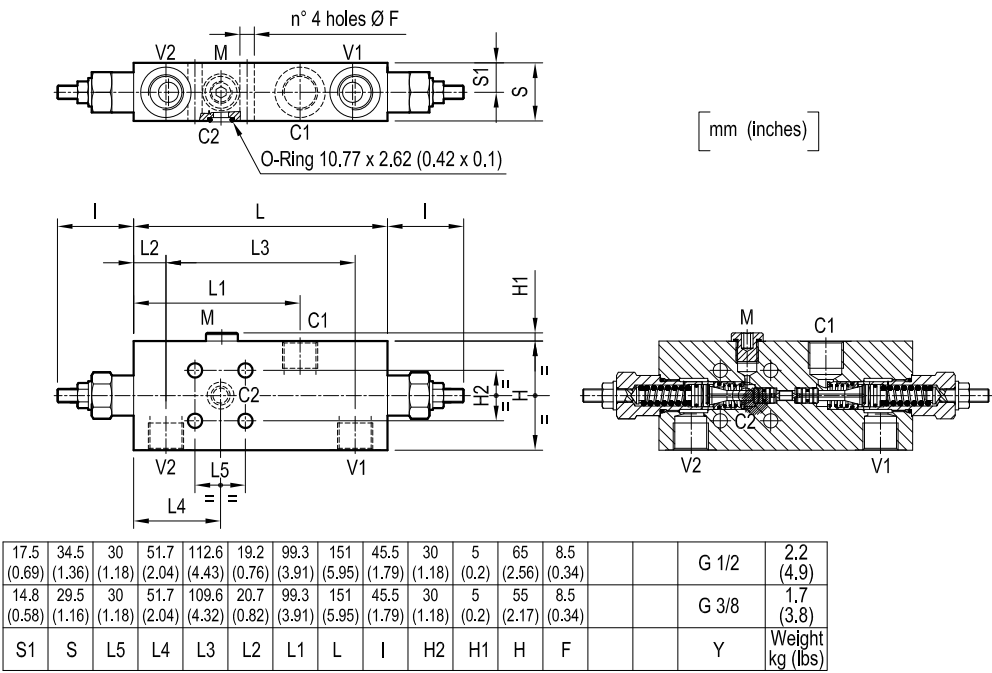
Relief setting: at least 1.3 times the highest expected load.

#### General

|                         |  |
|-------------------------|--|
| Manifold material       | Steel                                    |
| Weight                  | see "Dimensions"                         |
| Fluid temperature range | °C (°F) between -30 (-22) and +100 (212) |
| Other technical data    | see data sheet RE 18350-50               |

**Note:** for applications outside these parameters, please consult us.

Dimensions



Ordering code

08.44.30

X

Y

Z

Dual counterbalance

Pilot ratio

= 03    4.2:1

| SPRINGS |                                  |                                       |   |
|---------|----------------------------------|---------------------------------------|---|
|         | Adj. pressure range<br>bar (psi) | Pres. increase<br>bar/turn (psi/turn) | Std. setting<br>Q=5 (l/min.)<br>bar (psi) |
| = 20    | 60-210<br>(870-3000)             | 63<br>(914)                           | 200<br>(2900)                             |
| = 35    | 100-350<br>(1450-5000)           | 138<br>(2001)                         | 350<br>(5000)                             |

Tamper resistant cap  
code 11.04.23.002  
R930000752

| Type            | Material number |
|-----------------|-----------------|
| 084430030220000 | R930003428      |
| 08443003023500B | R930003429      |
| 084430030320000 | R930003431      |
| 08443003033500A | R930003432      |
|                 |                 |
|                 |                 |

| Type | Material number |
|------|-----------------|
|      |                 |
|      |                 |
|      |                 |
|      |                 |
|      |                 |