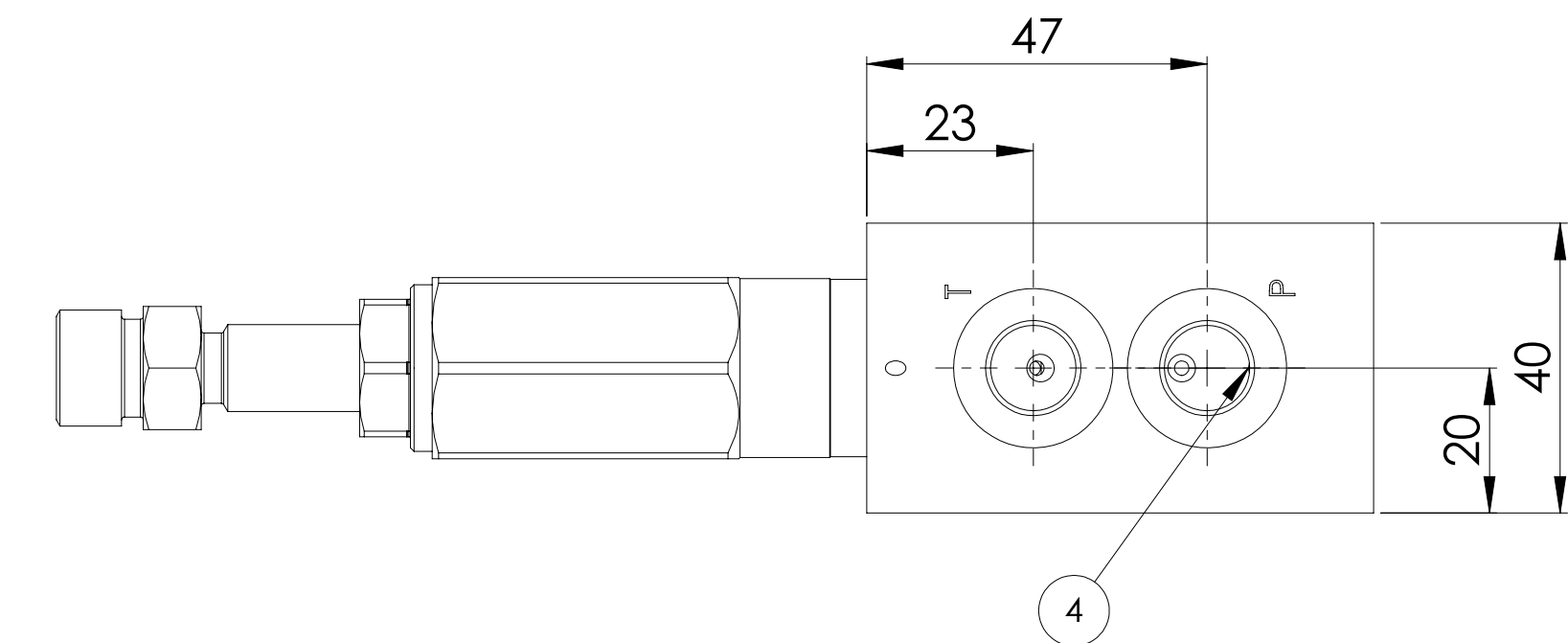
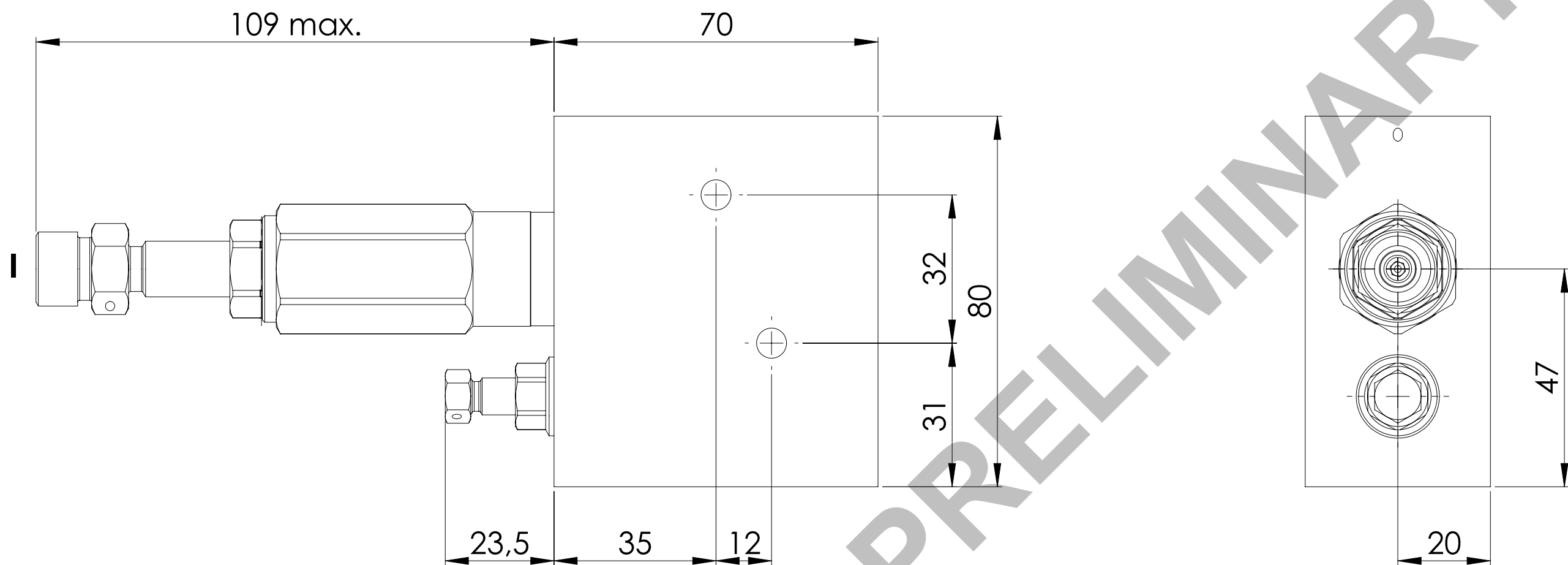
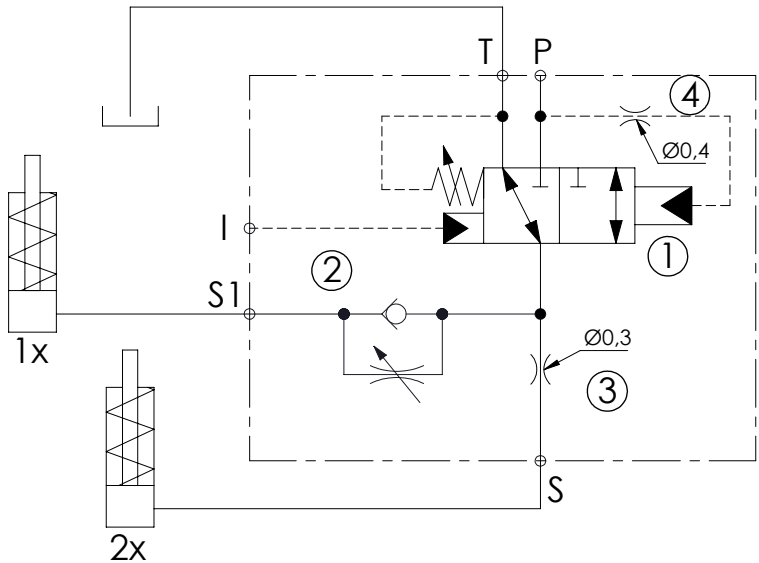


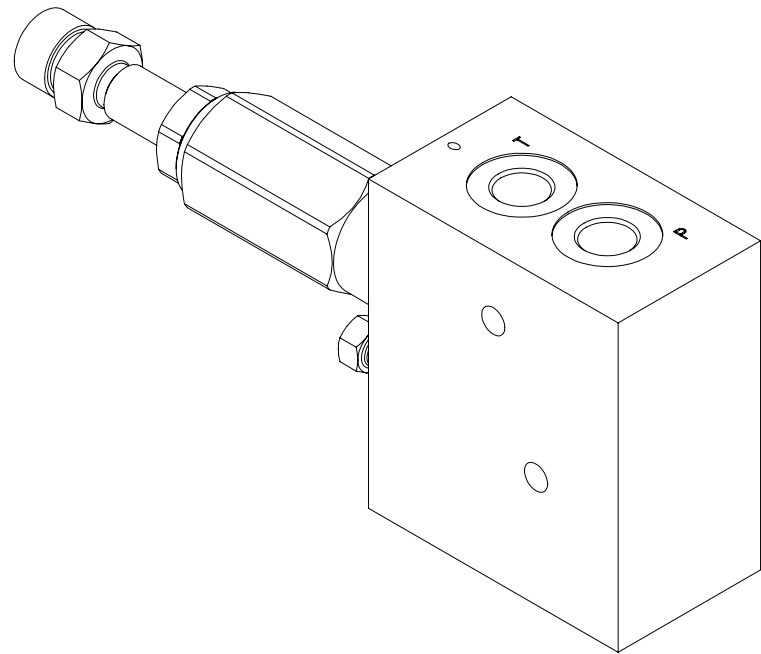
Under the screw



HYDRAULIC SCHEME



ISOMETRIC VIEW





SPECIFICATIONS

Rated flow:	l/min
Maximum pressure:	bar
Setting Valve n°1:	250 (0/+10) bar
Range setting	50 - 300 bar
Pressure increase	23 bar/turn
Leakage:	18 drops/min (at 235 bar)
Hysteresis:	15 bar
Increasing ratio:	1,56:1
Ports:	G 1/4" BSPP
P,T,S,S1	M16x1,5
Body material:	Aluminium
Surface treatment:	Anodized
Seals:	70 Shore NBR
General Tolerance:	± 0,5 mm
Oil Temperature range:	-30/+100 °C

COMPONENTS

N.	QUICK CODE	DESCRIPTION	Q.TY	TORQUE ±7% (Nm)	SPARE AVAIL.
1	CL000025	Logic element 3 ways	1	65	N
2	CF000045	CFSN-001-RDVR M8x42	1	13	N
3	PE000426	Orifice M6x6 with hole Ø0,3	1	-	Y
4	PE000178	Orifice M4x4 with hole Ø0,4	1	-	Y
5	LT000029	Manifold	1	-	N

* The cartridges, purchased as spare parts, will be sold with standard setting and not with the setting indicated in the valve.

TITLE						MTTL-008-NLSN-01-G14-N350						<div></div> <div>ATLANTIC</div> <div>Fluid Tech</div> <div>This drawing is the copyright property of Atlantic Fluid Tech Srl and must not be copied or reproduced without written consent. Strictly secret and confidential information.</div>		
RATED FLOW			MAXIMUM PRESSURE			SCHEME			WEIGHT					
CUSTOMER			CUSTOMER CODE			0.9 kg								
FIRST ANGLE PROJECTION			DRAWN			CHECKED			DATE			DRAWING NUMBER		
A2			M.S.			-			05/05/2025					
			REPLACES			ALL DIMENSIONS IN mm			SCALE					
			DP250175						1:1					
									REVISION			MT000045		
									A					

TESTING CYCLE VALVE CODE MT000045

1st - SETTING:

With 300 bar pressure in "P", gauges in "S" and "S1", unscrew load limiter setting screw until pressure is read on gauge on port "S", then reduce pressure in "P" and pressure in "S" must go to 0 bar, increase again pressure in "P" and check that at the pressure value indicated on the drawing the gauge in "S" port reads pressure.
Repeat the full cycle 2-3 times.

2nd - HYSTERESIS:

From setting pressure value, decrease pressure in "P" by 15 bar and check that pressure on gauge in port "S" goes to 0.
Repeat 2-3 times.

3rd - LEAKAGE:

With 15 bar less and 10 bar more than the setting pressure, check that leakage is not exceeding 30 drops/minute (Maximum leakage at 350 bar).

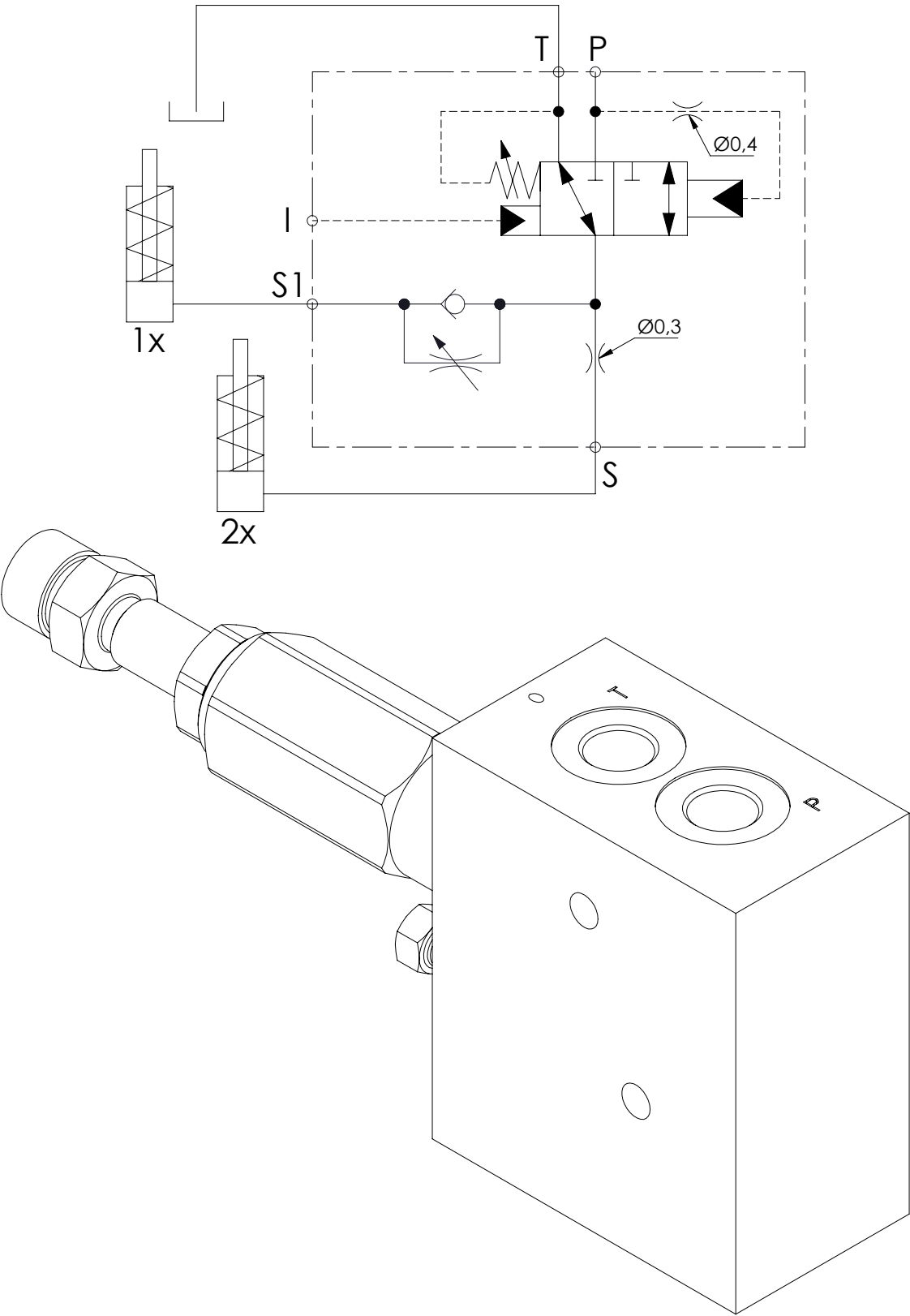
4th - RESTRICTION SETTING:


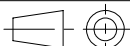
With 20 bar more than pressure setting in port "P", increase instantly the pressure level and check that delay between the 2 gauges in ports "S" and "S1" is between 1 and 1,5 seconds. If not, register the restriction screw accordingly.

5th - OVERBOOST

TESTING (test to be performed on 20% of the batch):

With 20 bar pressure on "I" port, verify that setting pressure increases by 12,8 bar.



TITLE							 ATLANTIC Fluid Tech	
MTTL-008-NLSN-01-G14-N350								
RATED FLOW		MAXIMUM PRESSURE		SCHEME		WEIGHT		
						0.9 kg		
CUSTOMER					CUSTOMER CODE		This drawing is the copyright property of Atlantic Fluid Tech Srl and must not be copied or reproduced without written consent. Strictly secret and confidential information.	
FIRST ANGLE PROJECTION		DRAWN		CHECKED		DATE		
		M.S.		-		05/05/2025		
A3		REPLACES		ALL DIMENSIONS IN mm	Cob	SCALE	REVISION	
		DP250175				1:2	A	
							DRAWING NUMBER	
							MT000045	