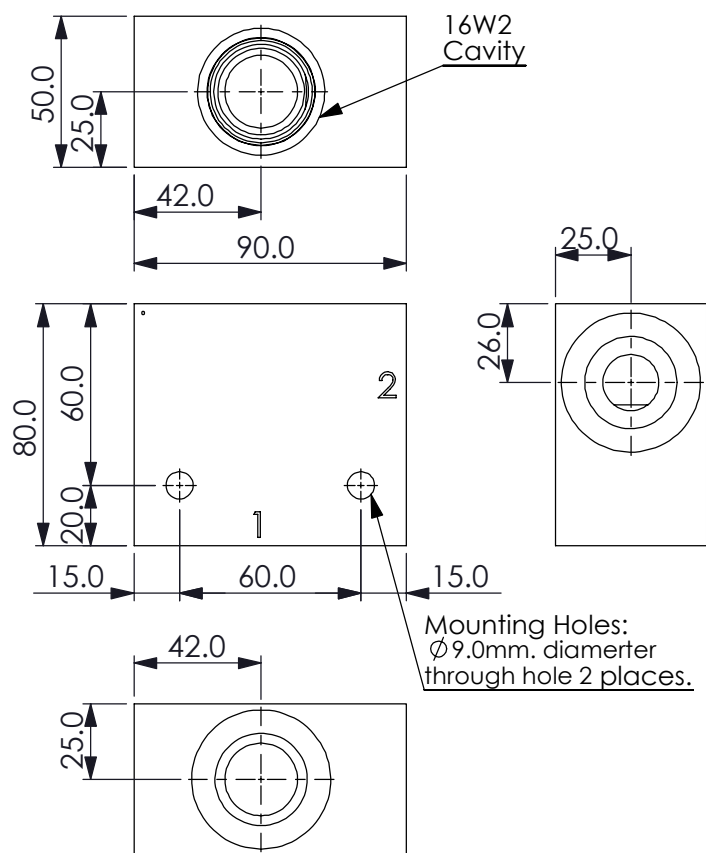
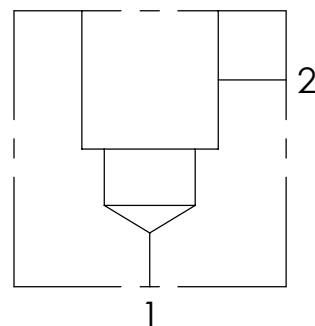
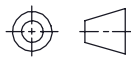


Ordering Code: **ML-16W2-X-Y 01-Z**



UNIT:mm



TECHNICAL DATA

Aluminum Body Pressure Rating: 210 bar
Ductile Iron Body Pressure Rating: 350 bar

Cavity:

Refer to 16W2

* Refer to Winner Cartridge Valves Catalog.

Aluminum	0.73 kg(WITHOUT VALVES)
Ductile Iron	2.18 kg(WITHOUT VALVES)

* If you need the special specification.
Please contact us.

PORT SIZE

X	PORT	PORT	
	1	2	
G08	G 1"	G 1"	

Z

CARTRIDGE VALVES SELECTION

	WITHOUT VALVE	
CV03	CV16W2003N (90LPM , 240bar)	
NV0N	NV16W20NL (350bar)	
EP01	EP16W2A01N05 , 150LPM,350bar (NORMALLY CLOSED,WITHOUT COIL)	
EP02	EP16W2A02N05 , 150LPM,350bar (NORMALLY CLOSED,WITHOUT COIL)	

COIL MUST BE ORDERED SEPARATELY
(REFER TO EC-04W-X-Y-Z)

The selection is only example. Please refer to Winner Cartridge Program and to select the appropriate valves and manifolds assembly in accordance with request function (flow 、 pressure 、 ... etc.)

Y

BODY MATERIAL

A

HIGH-STRENGTH ALUMINUM

S

DUCTILE IRON