

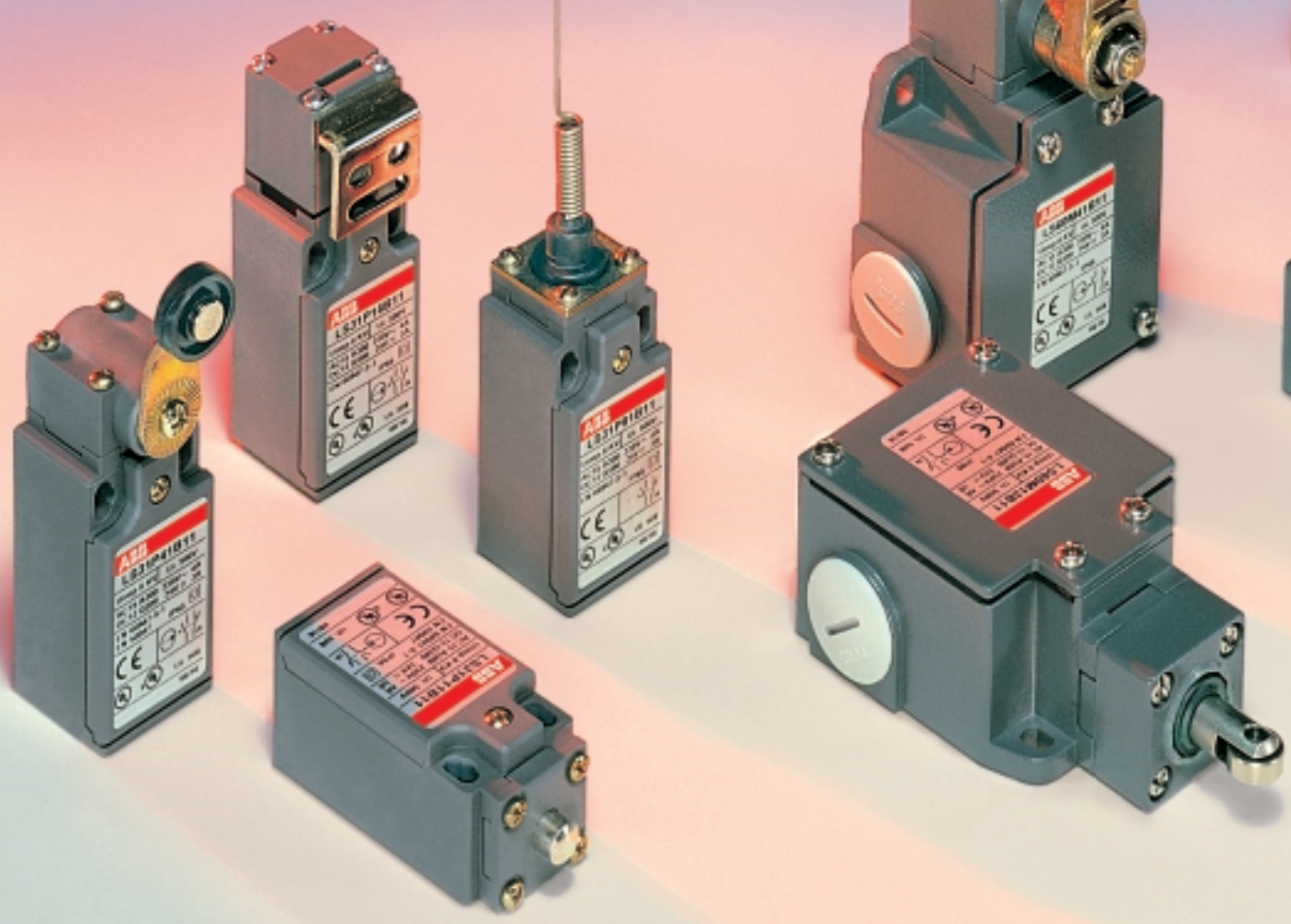
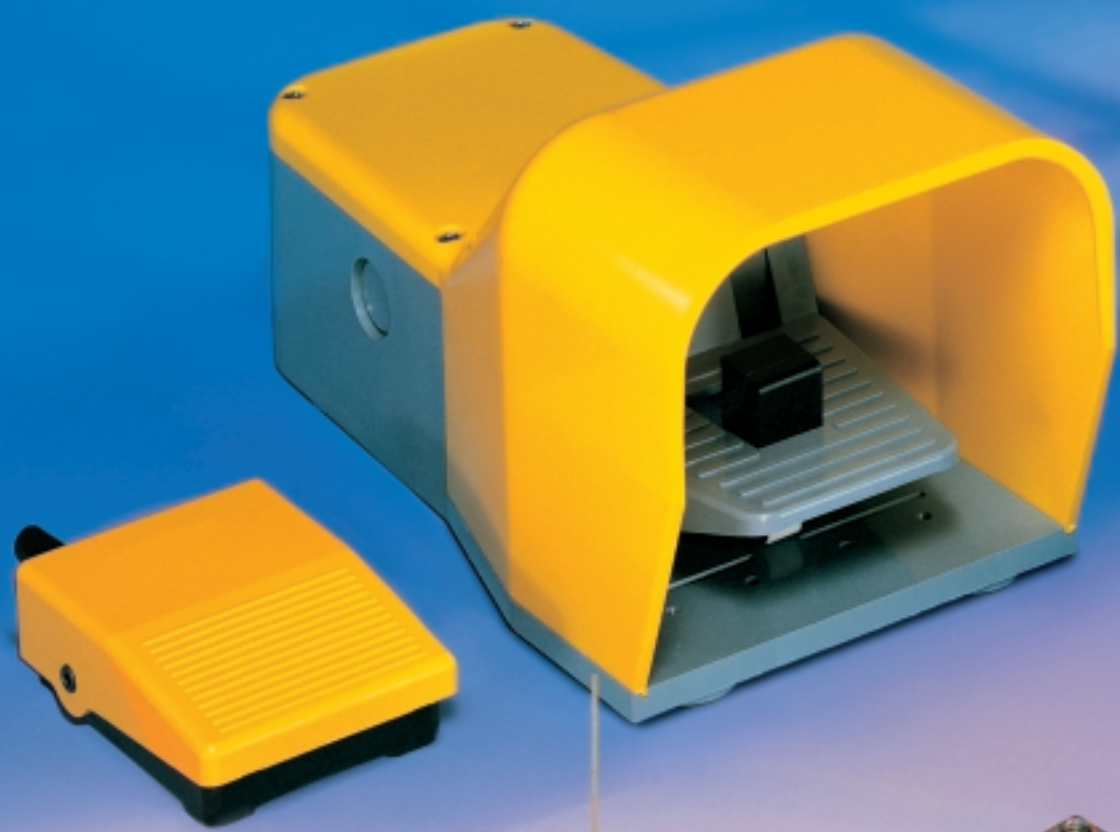
The necessary
complement for detection

1SBC 0023 99 R1002



Low Voltage Products





A modern and complete range

LS series limit switches

Plastic casing

- Double insulation
- IP 65 protection degree
- Complying with:
 - EN 50047 standard for 30 mm width
1 cable inlet for Pg 11 cable gland
 - EN 50041 standard for 40 mm width
1 cable inlet for Pg 13.5 cable gland

Metal casing

- IP 66 protection degree
- Complying with
 - EN 50041 standard for 40 mm width
1 cable inlet for Pg 13.5 cable gland
- Without normalisation for 60 mm width
3 cable inlets for Pg 13.5 cable glands

Actuators

- Safety key, plunger, roller plunger, roller lever, adjustable lever, or spring rod

Contact blocks

- Two electrically separated moving contacts, "Zb shape"
- Snap action or slow contact dependent action
- Positive opening operation of N.C. contact(s): ⊕

The limit switches are delivered completely assembled, ready for installation

Many variants (Casing, actuators or contact blocks) are available on request

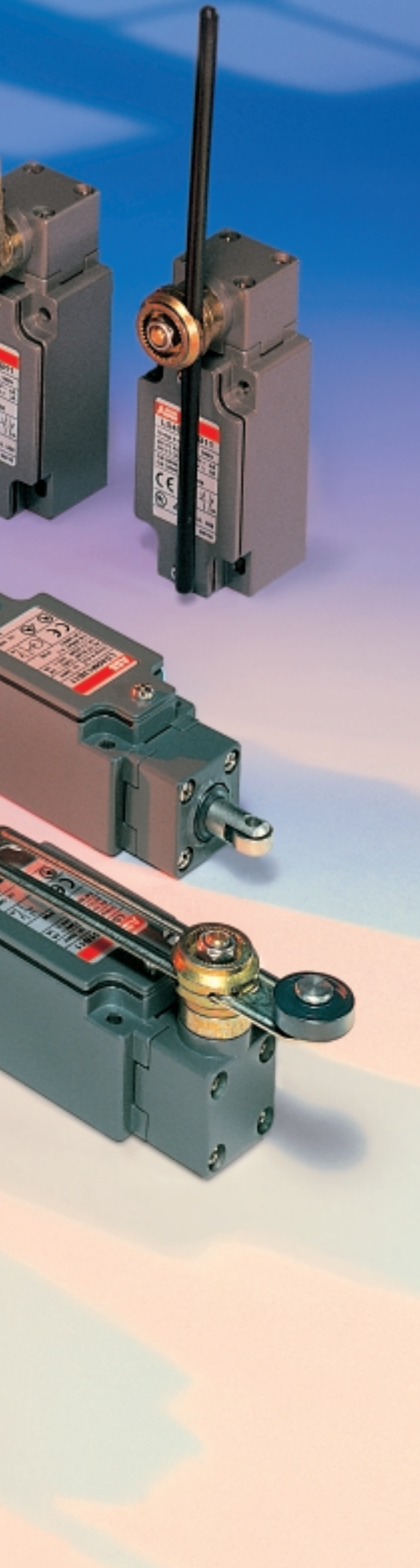
Foot switches

Foot switches with cover

- Double insulation
- IP 65 protection degree
- Actuation:
 - free movement
 - locked in neutral position
 - latched in low position

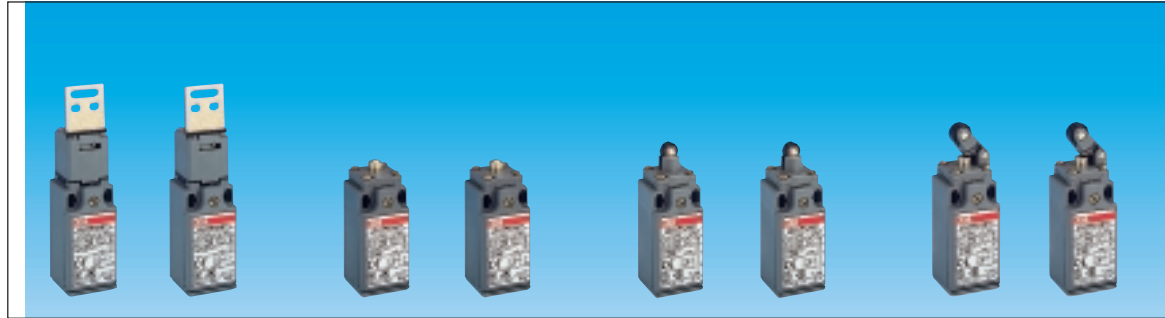
Mini foot switches

- IP 40 protection degree
- Free movement



Limit switches - Plastic casing

30 mm width



Movement to detect

Actuator

Types

Designation
(Snap action N.O. + N.C.)

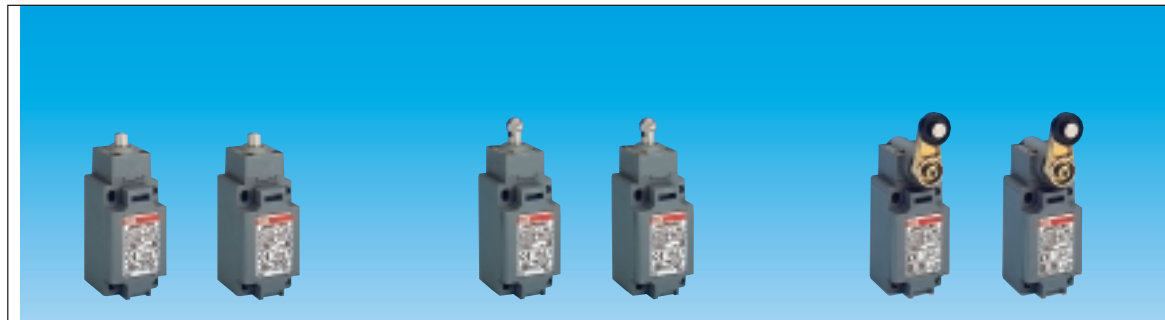
Designation
(Break before make slow action N.O. + N.C.)

CENELEC conformity

Positive opening operation
of N.C. contact

	Key translation	From end	30° cam translation	One way 30°
Actuator	Straight key 	Steel plain plunger 	Plastic roller plunger 	Plastic roller lever with steel plunger
Types	LS31P16	LS31P11	LS31P13	LS31P31
Designation (Snap action N.O. + N.C.)	LS31P16B11	LS31P11B11	LS31P13B11	LS31P31B11
Designation (Break before make slow action N.O. + N.C.)	LS31P16D11	LS31P11D11	LS31P13D11	LS31P31D11
CENELEC conformity	-	EN 50047	EN 50047	EN 50047
Positive opening operation of N.C. contact				

40 mm width



Movement to detect

Actuator

Types

Designation
(Snap action N.O. + N.C.)

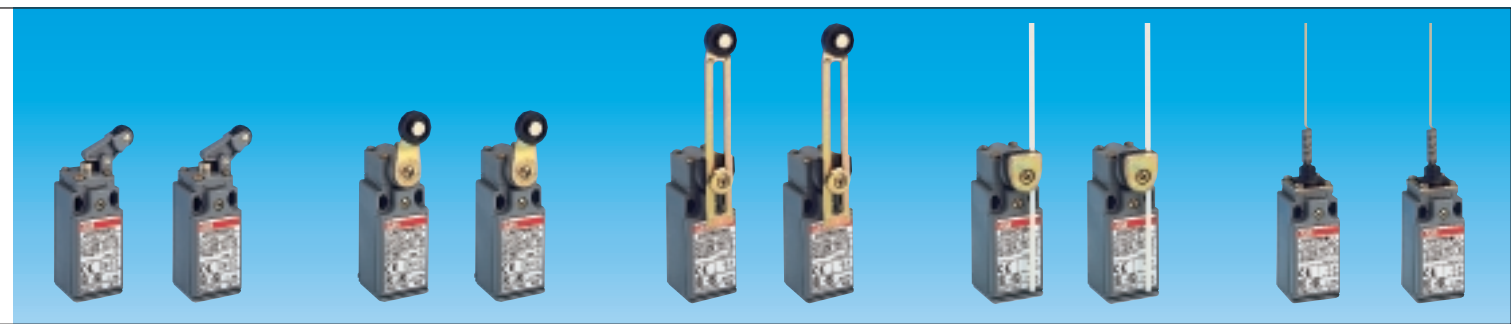
Designation
(Break before make slow action N.O. + N.C.)

CENELEC conformity

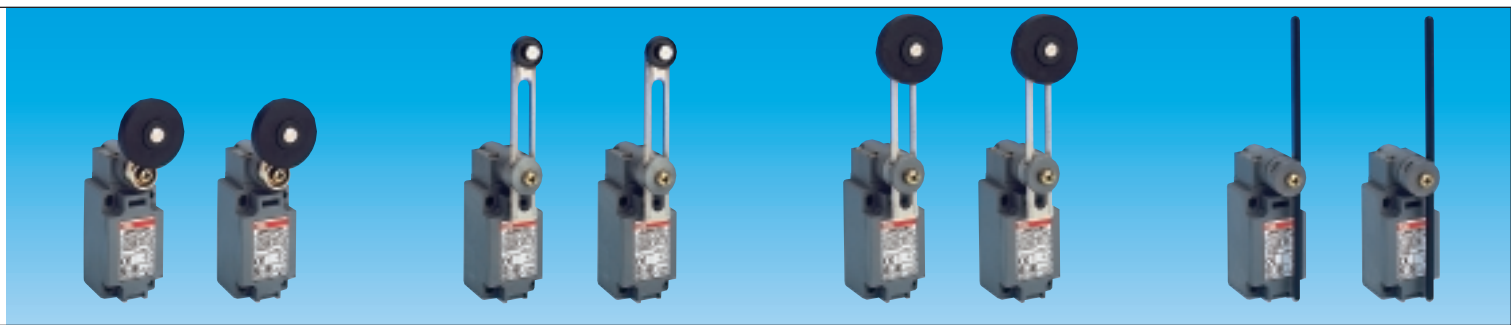
Positive opening operation
of N.C. contact

	From end		
Actuator	Steel plain plunger 	Steel roller plunger 	ø22 Polyamide roller with lever
Types	LS40P11	LS40P13	LS40P41
Designation (Snap action N.O. + N.C.)	LS40P11B11	LS40P13B11	LS40P41B11
Designation (Break before make slow action N.O. + N.C.)	LS40P11D11	LS40P13D11	LS40P41D11
CENELEC conformity	EN 50041	EN 50041	EN 50041
Positive opening operation of N.C. contact			

- Double insulation - IP65



cam translation	30° cam translation	All mobile translation	Multidirectional
<p>Plastic roller lever with steel plunger</p>	<p>ø18 Polyamide roller lever</p>	<p>ø18 Polyamide roller with adjustable lever</p>	<p>Adjustable lever with ø3 fibre-glass rod</p>
LS31P32	LS31P41	LS31P51	LS31P72
LS31P32B11	LS31P41B11	LS31P51B11	LS31P72B11
LS31P32D11	LS31P41D11	LS31P51D11	LS31P72D11
-	EN 50047	-	-
⊕	⊕	-	-



30° cam translation	All mobile translation
<p>ø45 Rubber roller with lever</p>	<p>ø22 Polyamide roller with adjustable lever</p>
LS40P44	LS40P54
LS40P44B11	LS40P54B11
LS40P44D11	LS40P54D11
-	-
-	-

All mobile translation
<p>ø6 Polyamide rod adjustable</p>
LS40P72
LS40P72B11
LS40P72D11
EN 50041
-

Limit switches -

40 mm width

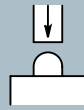


Movement to detect

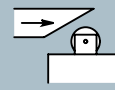
Actuator

From end

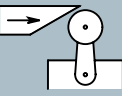
Stainless steel plain plunger



Stainless steel roller with plunger



ø22 Polyamide roller



Types

LS40M11

LS40M13

LS40M

Designation
(Snap action N.O. + N.C.)

LS40M11B11

LS40M13B11

LS40M41

Designation
(Break before make slow action N.O. + N.C.)

LS40M11D11

LS40M13D11

LS40M41

CENELEC conformity

EN 50041

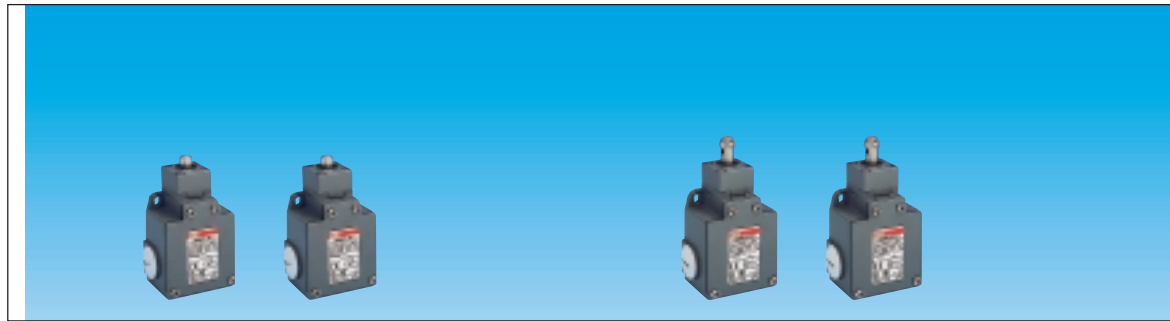
EN 50041

EN 50

Positive opening operation
of N.C. contact



60 mm width

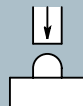


Movement to detect

Actuator

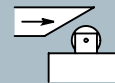
From end

Stainless steel plain plunger



30° cam translation

Stainless steel roller plunger



Types

LS60M11

LS60M13

Designation
(Snap action N.O. + N.C.)

LS60M11B11

LS60M13B11

Designation
(Break before make slow action N.O. + N.C.)

LS60M11D11

LS60M13D11

CENELEC conformity

-

-

Positive opening operation
of N.C. contact



Metal casing - IP66



30° cam translation

All mobile translation

with lever

ø22 Stainless steel roller with lever

ø22 Polyamide roller with adjustable lever

ø6 Adjustable polyamide rod

41

LS40M42

LS40M51

LS40M72

B11

LS40M42B11

LS40M51B11

LS40M72B11

D11

LS40M42D11

LS40M51D11

LS40M72D11

O41

EN 50041

-

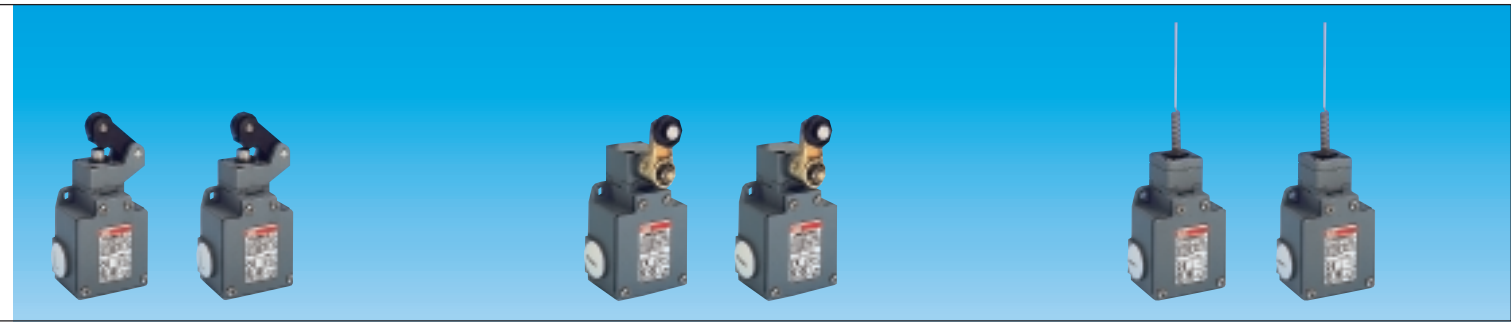
EN 50041

↻

↻

-

-



One way 30° cam translation

30° cam translation

Multidirectional

ø22 Polyamide roller with lever

ø22 Polyamide roller with lever

Spring rod

LS60M31

LS60M41

LS60M91

LS60M31B11

LS60M41B11

LS60M91B11

LS60M31D11

LS60M41D11

LS60M91D11

-

-

-

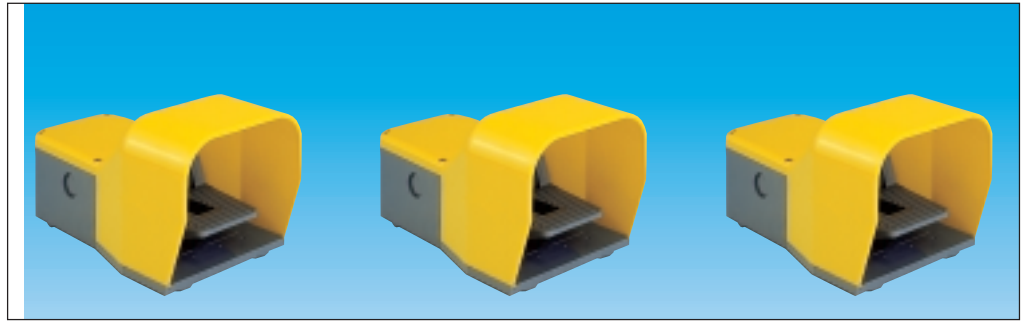
↻

↻

-

Foot switches

Foot switches with cover



Actuation

Free movement

Locked in neutral position

Latched in low position

Types

IPSY1

IPSY2

IPSY3

Designation
(Snap action N.O. + N.C.)

IPSY1A11

IPSY2A11

IPSY3A11

Designation
(Slow action N.O. + N.C.)

IPSY1D11

IPSY2D11

IPSY3D11

Cover colour

Yellow

Yellow

Yellow

Mini foot switches



Actuation

Free movement

Types

IPM

IPM

Designation
(Snap action N.O. / N.C.)

IPM2Y

IPM2B

Cover colour

Yellow

Black

As part of its on-going product improvement, ABB reserves the right to modify the characteristics or the products described in this brochure. The information given is not-contractual. For further details please contact the ABB company marketing these products in your country.

ABB Control s.a.
10, rue Ampère Z.I. - B.P. 114
F-69685 Chassieu cedex / France
Telephone : +33 (0) 4 7222 1722
Telefax : +33 (0) 4 7222 1935
<http://www.abb.com/lowvoltage>

Publication
N° TSBC 0023 99 R1 002
Printed in France (02.2000 D)