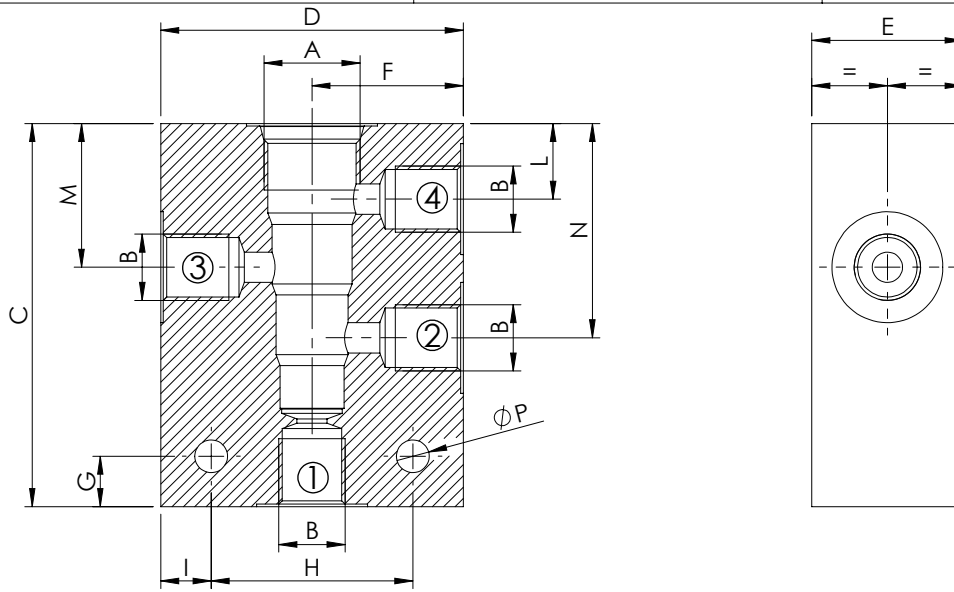


STANDARD MANIFOLDS

SAE-XX-4N



CAVITY	DIMENSIONS (mm)												QUICK CODE	
	A	B	C	D	E	F	G	H	I	L	M	N	P	Steel
SAE-08-4N	G 1/4"	76	60	30	30	10	40	10	15	28,5	42,5	6,5	LK000282	LK000015
	G 3/8"	76	60	30	30	10	40	10	15	28,5	42,5	6,5	LK000276	LK000014
SAE-10-4N	G 1/4"	80	65	35	32,5	10	50	7,5	18	35	50	6,5	LK000231	LK000010
	G 3/8"	85	60	35	30	15	45	7,5	19	35	51	7	LK000043	LK000011
SAE-12-4N														
SAE-16-4N														
SAE-20-4N														