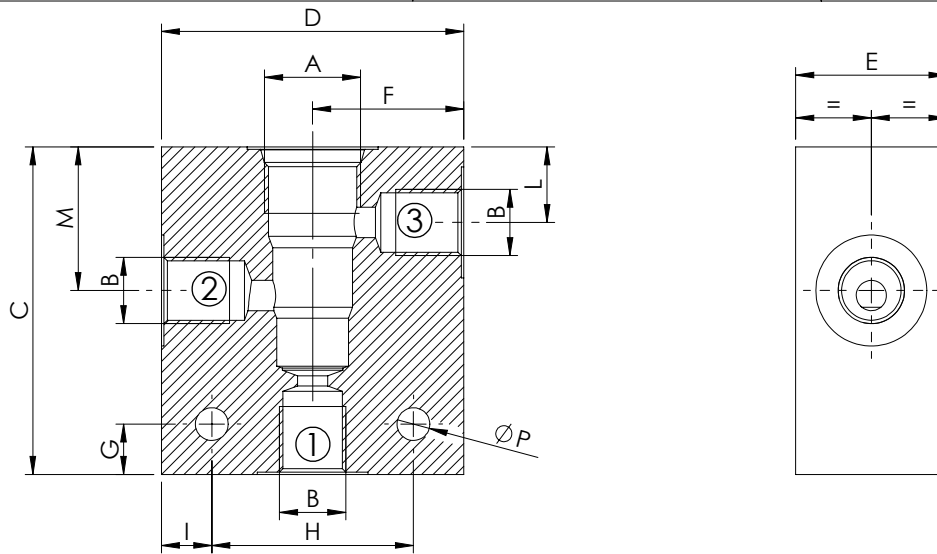


STANDARD MANIFOLDS

**SAE-XX-3N**



CAVITY	DIMENSIONS (mm)											QUICK CODE			
	A	B	C	D	E	F	G	H	I	L	M	N	P	Steel	Aluminium
SAE-08-3N	G 1/4"	65	60	30	30	10	40	10	15	28,5	6,5			LK000089	LK000008
	G 3/8"	65	60	30	30	10	40	10	15	28,5	6,5			LK000090	LK000009
SAE-10-3N	G 1/4"	65	65	35	32,5	10	50	7,5	18	35	6,5			LK000035	LK000012
	G 3/8"	65	65	35	32,5	10	50	7,5	18	35	6,5			LK000027	LK000013
	G 1/2"	70	70	35	35	15	50	10	18	34,5	7			LK000131	LK000057
SAE-12-3N	G 1/2"	100	80	40	42,5	15	55	12,5	29	54	7			LK000100	LK000281
	G 3/4"	100	80	40	40	15	55	12,5	29	54	7			LK000294	LK000295
SAE-16-3N	G 3/4"	100	90	50	45	20	60	15	26	54,5	10,5			LK000256	LK000257
SAE-20-3N															