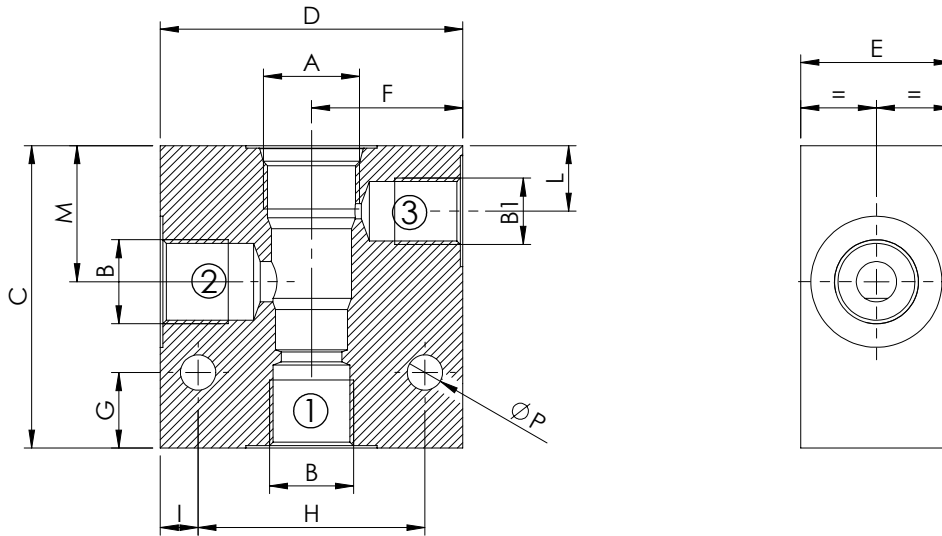


STANDARD MANIFOLDS

SAE-XX-3C



CAVITY	DIMENSIONS (mm)												QUICK CODE	
	A	B	B1	C	D	E	F	G	H	I	L	M	P	Steel
SAE-08-3C	G 3/8"	G 1/4"	60	60	30	30	15	45	7,5	13	27	7	LK000279	LK000033
SAE-10-3C	G 3/8"	G 1/4"	70	60	35	30	15	45	7,5	15	32	7	LK000280	LK000034
SAE-12-3C	G 1/2"	G 1/4"	80	75	40	35	15	55	10	24	42	7	LK000165	LK000164
	G 3/4"	G 1/4"	90	75	40	35	15	55	10	24	42	7	LK000210	LK000211
	7/8-14	9/16-18	80	75	40	35	15	55	10	24	42	9	LK000263	LK000262
SAE-16-3C	G 1"	G 1/4"	90	90	50	40	22	70	10	18,5	39	9	LK000212	LK000213
	G 3/4"	G 1/4"	90	80	50	38	22	60	10	18,5	39	9	LK000264	LK000265
	1 5/16-12	7/16-20	90	90	50	40	22	70	10	18,5	39	9	LK000266	LK000267
SAE-20-3C	G 1"	G 1/4"	110	100	60	45	25	75	12,5	21	51	11	LK000268	LK000269
	G 1-1/4"	G 1/4"	110	100	60	45	25	75	12,5	21	51	11	LK000270	LK000271
	1 5/8-12	7/16-20	110	100	60	45	25	75	12,5	21	51	11	LK000272	LK000273