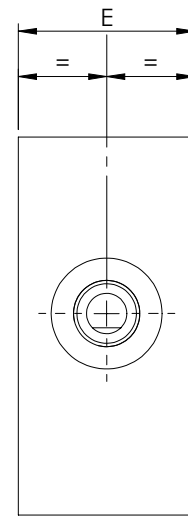
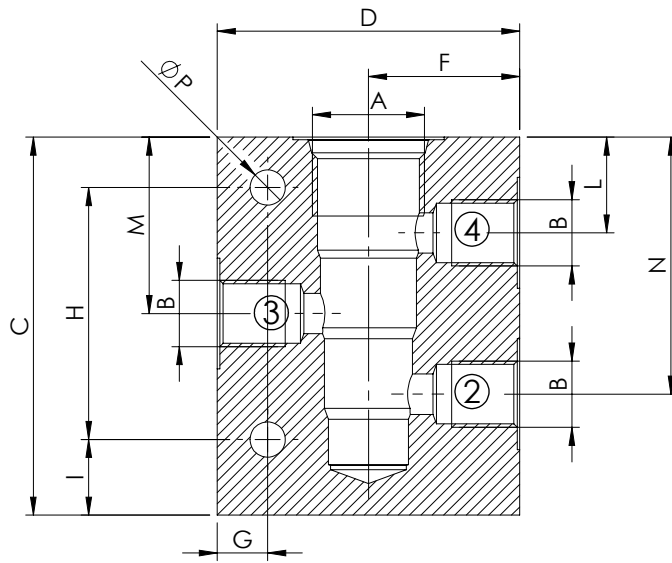


STANDARD MANIFOLDS

SAE-XX-4N 3P

THREE PORTS



CAVITY	DIMENSIONS (mm)												QUICK CODE		
	A	B	C	D	E	F	G	H	I	L	M	N	P	Steel	Aluminium
SAE-08-4N															
SAE-10-4N	G 1/4"	75	60	35	30	10	50	15	19	35	51	7	LK000040	LK000038	
	G 3/8"	75	60	35	30	10	50	15	19	35	51	7	LK000016	LK000037	
	G 1/2"	85	65	35	32,5	10	50	15	19	35	51	7	LK000041	LK000039	
	9/16-18	75	60	35	30	10	50	15	19	35	51	7	LK000331	LK000330	
SAE-12-4N															
SAE-16-4N	G 3/4"	120	90	50	45	12	90	15	25,5	54	82,5	8,5	LK000222	LK000225	
SAE-20-4N															