**GS04 14**

UP TO

50 L/MIN**13 USGPM****GS04 18**

AND

350 BAR**5000 PSI**

POPPET TYPE

2 Position 2 Way

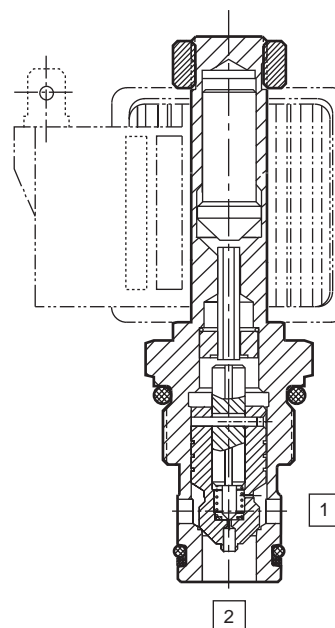
Normally Open

High Pressure

- High flow capacity with reduced space requirements.
- One piece cartridge housing ensures internal concentricity.
- Coil: Waterproof, hermetically sealed, requires no O'Rings; Interchangeable with 02 and 06 series poppet valves; Symmetrical coil can be reversed without affecting performance.

OPERATION

De-energized the pilot is held off its seat via a light spring and the poppet moves freely to allow flow from the side to nose port. Pressure on the nose port forces the poppet to close giving only restricted flow (without the free reverse flow feature). **Energized** the armature pushes the pilot and poppet onto their seats. Pressure on the side port firmly closes the poppet. Pressure on the nose port lifts the poppet and allows free flow.


 PATENT
#5,002,253

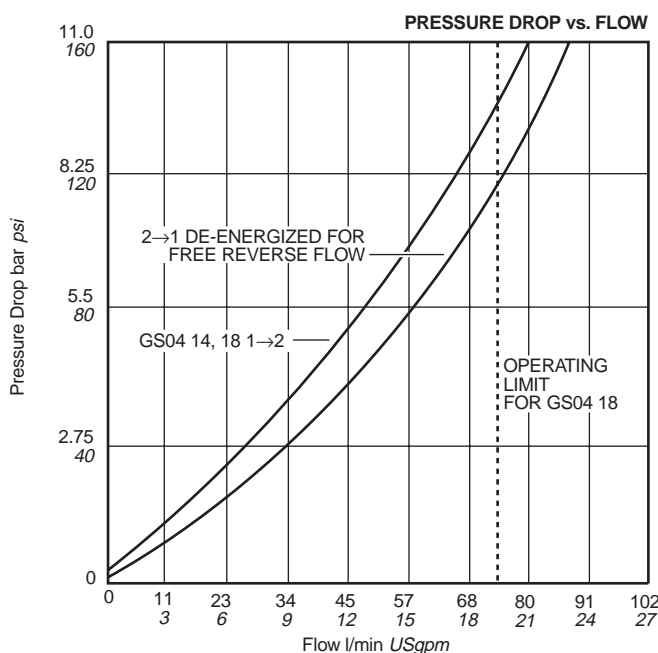
SPECIFICATIONS

BASIC MODEL NUMBER	RESTRICTED REVERSE FLOW	FREE REVERSE FLOW
	HIGH PRESSURE GS04 14	HIGH PRESSURE GS04 18
SYMBOL		
NOMINAL FLOW AT $\Delta p = 5 \text{ bar } 70 \text{ psi}$	50 l/min 13 USgpm	
PRESSURE	350 bar 5000 psi	
FUNCTION	FREE FLOW 1→2 AND RESTRICTED FLOW 2→1 WHEN SOLENOID IS DE-ENERGIZED	FREE FLOW IN BOTH DIRECTIONS WHEN SOLENOID IS DE-ENERGIZED
RESPONSE TIME AT NOM. FLOW & PRESS.	100 m. sec. 70 m. sec.	
MAX INTERNAL LEAK AT 210 bar 3000 psi at 38 cSt 180 SSU	0.33 ml/min 5 drops/min	
SERIES CC COIL WATTS. (100% DUTY CYCLE)	19w (P' Coil)	
MIN AMPERAGE TO OPERATE VALVE AT MAX RATED PRESSURE & FLOW	75% OF NOMINAL AMPERAGE, DETAILS: COIL DATA SHEET page 204	
INSTALLATION	UNRESTRICTED	
FLUID *	MINERAL OIL OR SYNTHETIC FLUID WITH LUBRICANT PROPERTIES	
IDEAL VISCOSITY *	15-50 cSt 80-230 SSU	
SEAL MATERIAL/ TEMPERATURE *	NITRILE (Std.) -30°C to +100°C BUNA-N -20°F to +210°F VITON -20°C to +150°C -4°F to +330°F	
FILTRATION *	25 MICRONS (Nom.) OR BETTER	
CART. WEIGHT	0.15 kg 0.34 lb	
COIL WEIGHT	0.20 kg 0.44 lb	

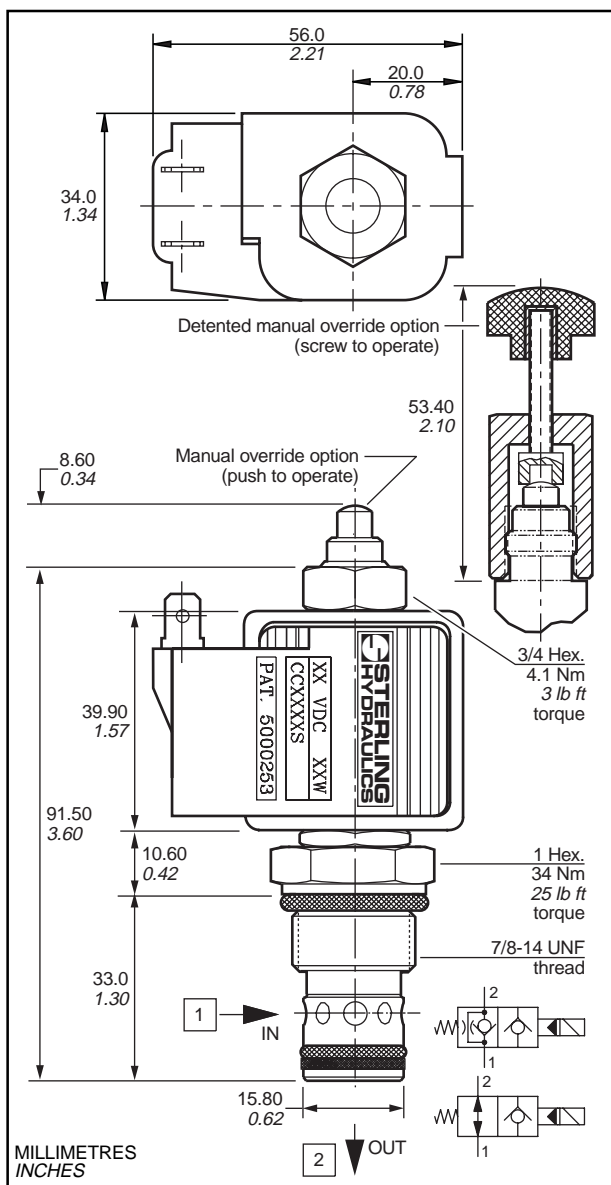
* **IMPORTANT:** See pages 582-583 for additional notes on operating conditions. Specifications may change without notice

TYPICAL PERFORMANCE

Measured at 30cSt 140 SSU (For cartridge only)

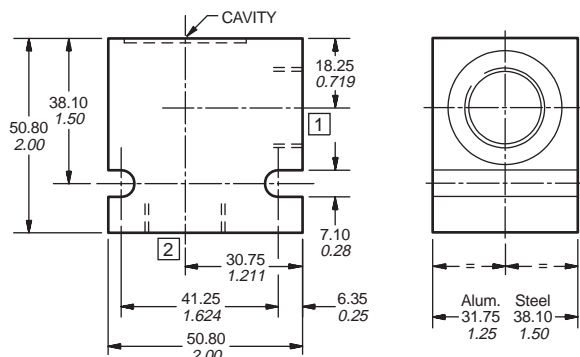


DIMENSIONS



LINE BODY

CAVITY CAV04-2: 7/8-14 Thread
(10-2 Industry common cavity)



(LB10705/707 Shown)

CAVITY TOOLING FOR CAV04-2

	MM	INCH	
PILOT DRILL Ø	15.00	0.59	REAMER (STEEL) 8RM31079S
STEP DRILL	8DS31367		COUNTERBORE -
REAMER (ALUM)	8RM31079A		TAP 8TP31201

MACHINING DETAILS PAGE 540

CARTRIDGE

GS04

C

PRESSURE AND PERFORMANCE FEATURES (Normally Open)	14	HIGH PRESSURE ('P' Coil) Restricted reverse flow
	18	HIGH PRESSURE ('P' Coil) Free reverse flow
MANUAL OVERRIDE (Option)	0	NOT REQUIRED
	1	MANUAL OVERRIDE
	2	DETENTED M.O. Part no. 900690
FILTER SCREEN (Option)	0	NOT AVAILABLE
SEAL MATERIAL	N	NITRILE <i>BUNA-N</i> (Std.)
	V	VITON

COIL

CC

COIL WATTAGE	P	PUISSANT	WATTAGE
COIL VOLTAGE*	012	12V DC	19w
	024	24V DC	
	115	115V AC	19w
	230	230V AC	22w
COIL TERMINAL*	A	AMP JR. (CC Coil Only, DC Only)	
	AD	AMP JR. WITH 3 AMP DIODE (CC Coils only, DC Only)	
	C	DOUBLE LEAD WIRE WITH CONDUIT CONNECTOR (AC Only)	
	D	DIN 43650 (AC or DC, Supplied without DIN Connector)	
	L	DOUBLE LEAD (DC Only)	
	LD	DOUBLE LEAD WITH DEUTSCH CONNECTOR DT04-2P-EP04 (DC Only)	
	LE	DOUBLE LEAD WITH 3 AMP DIODE (DC Only)	
	PF	DOUBLE LEAD WIRE WITH PACKARD FEMALE WEATHER PACK CONNECTOR 1201 5792 (DC Only)	
	PM	DOUBLE LEAD WIRE WITH PACKARD MALE WEATHER PACK CONNECTOR 1201 0973 (DC Only)	
	S	DOUBLE SPADE (DC Only)	
	W	DOUBLE SCREW (DC only)	
	WE	DOUBLE SCREW WITH 3 AMP DIODE (DC Only)	
	Y	SINGLE SCREW (Internally Grounded, DC Only)	
* ADDITIONAL VOLTAGES AND OTHER TERMINALS ARE AVAILABLE, FOR DETAILS PLEASE CONSULT FACTORY			
COIL DETAILS page 204			

LINE BODY

LB10

PORTING	705 707	1/2 SAE 1/2 BSP	708 709	3/4 SAE 3/4 BSP
LINE BODY MATERIAL	A	ALUMINIUM (Anodised) TO 210 bar <i>3000 psi</i>		
	S	STEEL (Zinc plated) TO 420 bar <i>6000 psi</i>		
LINE BODY DETAILS page 513 for 708 / 709 consult factory				

SEAL KIT	SK30503N-1 (NITRILE- <i>BUNA N</i>) SK30503V-1 (VITON)
----------	------------------------------------------------------------

STERLING
HYDRAULICS