

# FIXED PUMPS DOUBLE FLOW MODELS PA, PAC AND PAD HYDRO LEDUC



- Optimum adaption to the rugged environmental conditions – extremely resistant to contaminations in the oil
- Ideal for difficult demands:
  - » pressure peaks
  - » slightly degraded fluids
  - » most difficult working conditions
- Double shaft sealing
- Robust solution for a long service life
- Arbitrary rotating direction
- Overflow oil line is not required
- The new double flow series (PAD) with 5 pistons per circuit offers an optimum flow regularity as well as pulsation behaviour with reduced installation sizes
- Reduced noise emissions with the pump series PAD

## TECHNICAL SPECIFICATIONS

| Type        | Displacement<br>volume*<br>(dm <sup>3</sup> ) | Pressure max.     |                    | Drive<br>max.<br>(turns/min) | Self weight<br>(kg) |
|-------------|---|-------------------|--------------------|------------------------------|---------------------|
|             |   | duration<br>(bar) | peak <5 s<br>(bar) |                              |                     |
| EP 589(PAC) | 2 x 25  | 350               | 500                | 1800                         | 16                  |
| EP 582(PA)  | 2 x 39  | 350               | 500                | 1700                         | 23.5                |
| EP 583(PA)  | 2 x 52  | 350               | 500                | 1500                         | 23.5                |
| EP 556(PA)  | 2 x 57  | 350               | 500                | 1310                         | 23.5                |
| EP 502(PA)  | 2 x 75  | 350               | 500                | 1200                         | 26.8                |
| EP1158(PA)  | 75/40   | 350               | 500                | 1500                         | 27.4                |
| EP1415(PAD) | 2 x 67  | 350               | 500                | 1400                         | 24.6                |
| EP1999(PAD) | 2 x 32  | 350               | 500                | 2200                         | 24.6                |
| EP2000(PAD) | 2 x 40  | 350               | 500                | 2000                         | 24.6                |
| EP2001(PAD) | 2 x 57  | 350               | 500                | 1550                         | 24.6                |

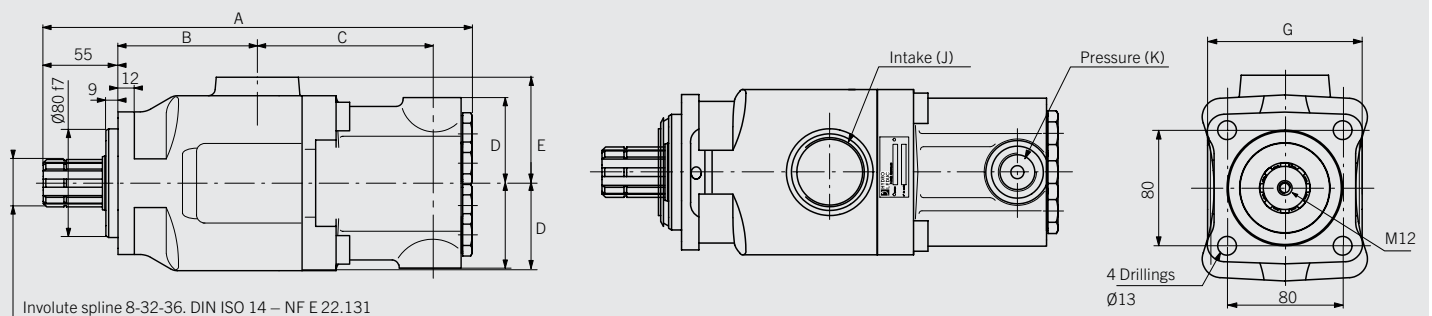
\* at 1000 rpm

**SCOPE OF DELIVERY:** Axial piston fixed pump, suction connection

## DIMENSIONS

| Type   | A<br>(mm) | B<br>(mm) | C<br>(mm) | D<br>(mm) | E<br>(mm) | G<br>(mm) | J<br>(inch) | K<br>(inch) |
|--------|-----------|-----------|-----------|-----------|-----------|-----------|-------------|-------------|
| EP 582 | 345       | 123       | 138       | 69        | 90        | 124       | G 2         | G ¾         |
| EP 583 | 345       | 123       | 138       | 69        | 90        | 124       | G 2         | G ¾         |
| EP 556 | 345       | 123       | 138       | 69        | 90        | 124       | G 2         | G ¾         |
| EP 502 | 302       | 126       | 147.8     | 72.5      | 90        | 124       | G 2         | G ¾         |
| EP 589 | 243       | 102.5     | 112.8     | 63        | 78        | 107       | G 1½        | G ¾         |
| EP1415 | 287       | 123       | 133.8     | 77.5      | 90        | 124       | G 2         | G ¾         |
| EP1999 | 287       | 123       | 133.8     | 77.5      | 90        | 124       | G 2         | G ¾         |
| EP2000 | 287       | 123       | 133.8     | 77.5      | 90        | 124       | G 2         | G ¾         |
| EP2001 | 287       | 123       | 133.8     | 77.5      | 90        | 124       | G 2         | G ¾         |

## TECHNICAL DRAWING



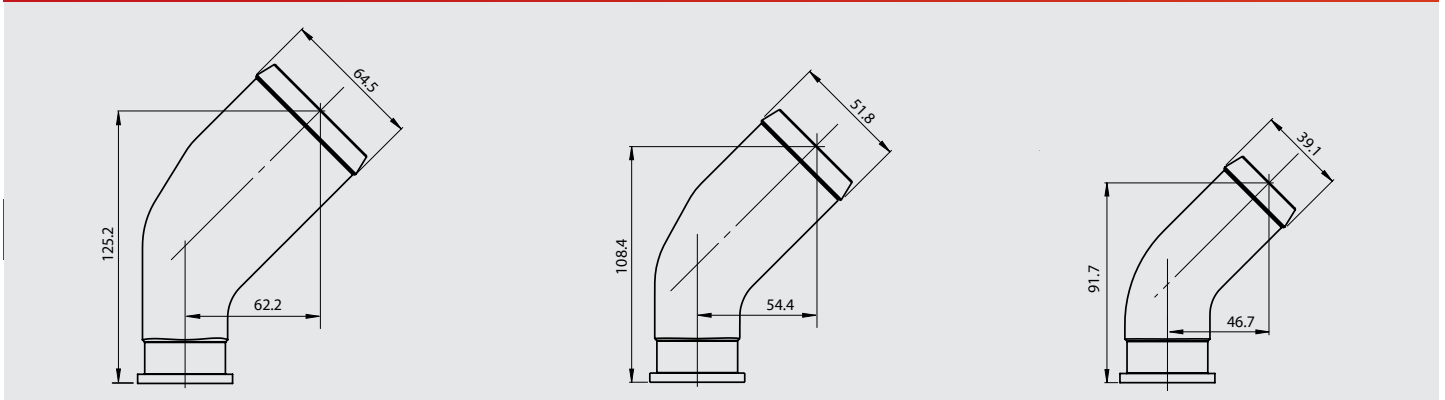
# ACCESSORIES FOR PUMPS

## HYDRO LEDUC

### TECHNICAL SPECIFICATIONS: FOR EP1396A – EP1403A

| Type      | Description        | Dimensions              | Displacement volume (litre) |
|-----------|--------------------|-------------------------|-----------------------------|
| EA1991    | Suction connection | G 1 1/2"                | 12 – 32                     |
| EA1992    | Suction connection | G 2" = 51.8 mm          | 12 – 80                     |
| EA1993    | Suction connection | G 2 1/2" = 64.5 mm      | 80 – 130                    |
| EA1993-90 | Suction connection | G 2 1/2" = 64.5 mm, 90° | 80 – 130                    |
| EA1992-90 | Suction connection | G 2" = 51.8 mm, 90°     | 12 – 80                     |
| EA1991-90 | Suction connection | G 1 1/2", 90°           | 12 – 32                     |

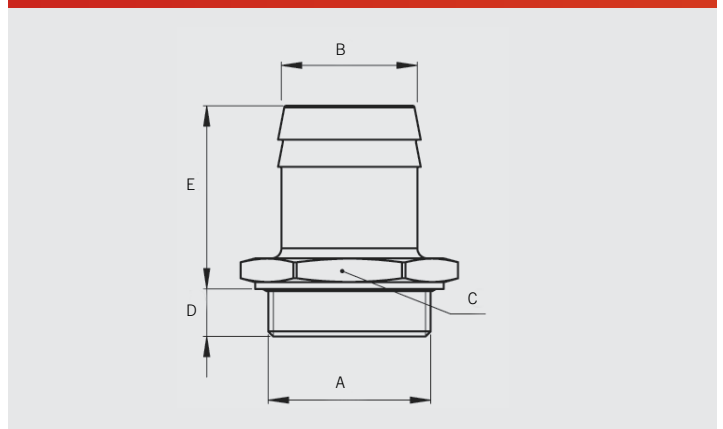
### TECHNICAL DRAWING



### TECHNICAL SPECIFICATIONS: FOR PA, PAC, PAD AND TXV PUMPS

| Type      | Description        | Dimension A (inch) | Ø B (mm) | C (mm) | D (mm) | E (mm) | For model    |
|-----------|--------------------|--------------------|----------|--------|--------|--------|--------------|
| EA1731    | Suction connection | G 1 1/2"           | 40       | 56     | 14     | 54     | PA, PAC, TXV |
| EA1867    | Suction connection | G 1 1/2"           | 50       | 52     | 14     | 66     | PA, PAC, TXV |
| EA1867-60 | Suction connection | G 1 1/2"           | 60       | 64     | 14     | 69     | PA, PAC, TXV |
| EA1867-63 | Suction connection | G 1 1/2"           | 63.5     | 64     | 14     | 69     | PA, PAC, TXV |
| EA2148    | Suction connection | G 2"               | 50       | 66     | 14     | 54     | PA, PAC      |
| EA1987    | Suction connection | G 1 1/2"           | 76.2     | 80     | 14     | 89     | PA, PAC      |

### TECHNICAL DRAWING



## OTHER ACCESSORIES

| Type   | Description  | Self weight (kg) |
|--------|--|------------------|
| EA2065 | Cardan plate for direct mounting of the pump to the cardan shaft | 1.06             |
| EA2066 | Cardan plate for direct mounting of the pump to the cardan shaft | 1.18             |

| Type    | Description   | Dimensions (mm) |
|---------|---|-----------------|
| EH4937  | Suction hose  | NW 40 x 1700    |
| EH4721  | Suction hose  | NW 50 x 1700    |
| EH4560  | Pressure hose   | NW 16 x 550     |
| EA1354  | Pressure fitting  | R 3/4" – R 3/4" |
| ED1132  | Sealing   |                 |
| ES2546  | Adjusting screw for TXV and TXVi pumps to limit the angle of pivoting, adaptable to the desired delivery volume of the pump |                 |
| EEA6388 | LS sensor for EP1926L   |                 |

## TECHNICAL DRAWING

