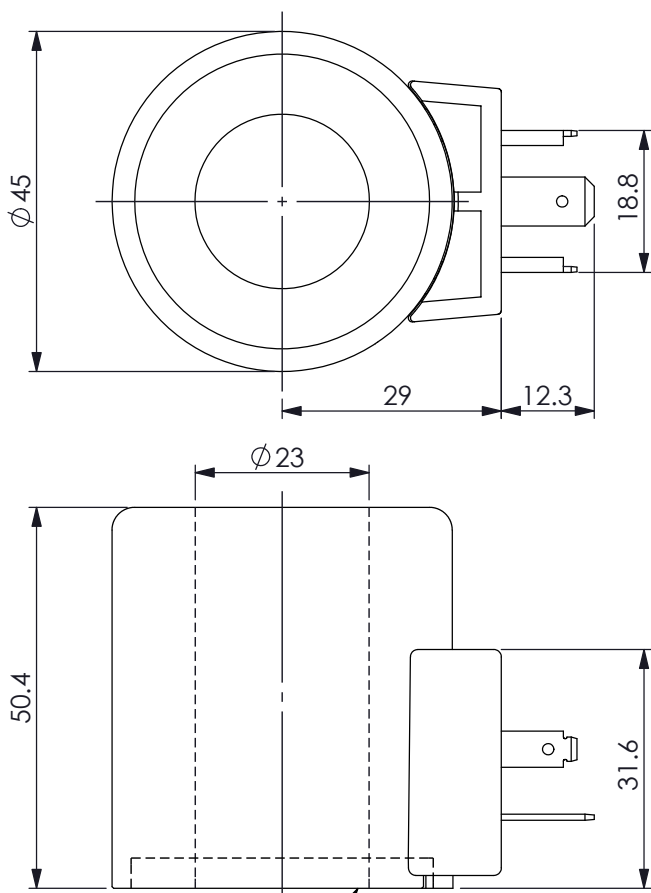
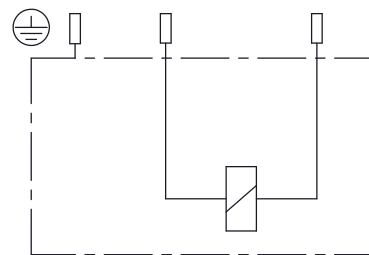
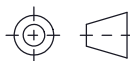


Ordering Code: **EC-23C-X-Y-Z**



UNIT:mm

While installing, please be sure that this side is toward to the solenoid cartridge valve.



### TECHNICAL DATA

Weight: 0.35 kg

HEAT INSULATION CLASS H:  
356°F (180°C)

Ambient temperature range:  
-22+140°F (-30+60°C)

Available on request:  
Different Voltages -  
Different connectors.

Inlet voltage fluctuations must not exceed  $\pm 10\%$  of nominal voltage to obtain correct operation and long life of coils.

Connector Environment Rating: IP65

X	Nominal Power (W) (At rated voltage)	
300	30 Watt.	
*The nominal power (W) at maximum current with proportional control is 17 watt.		

Y	Connections	
H	DIN43650-ISO4400	

Z	Voltage (V)	Resistance ( $\Omega$ )	Maximum Current (A) (Proportional Control)	
	Nominal	20~25 °C		
E	12V DC	2.5 $\pm$ 7%	2600 mA	
D	24V DC	19.2 $\pm$ 7%	940 mA	