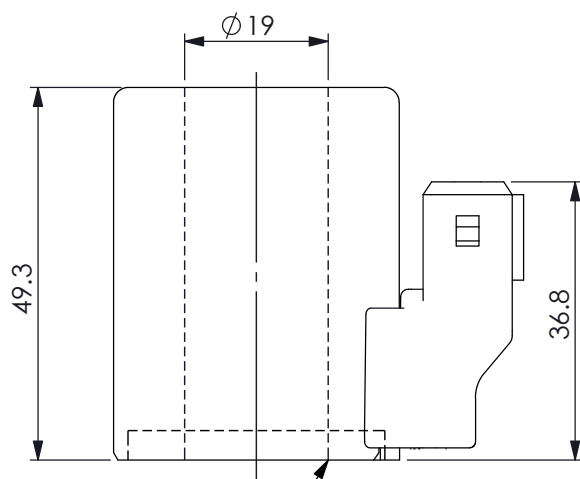
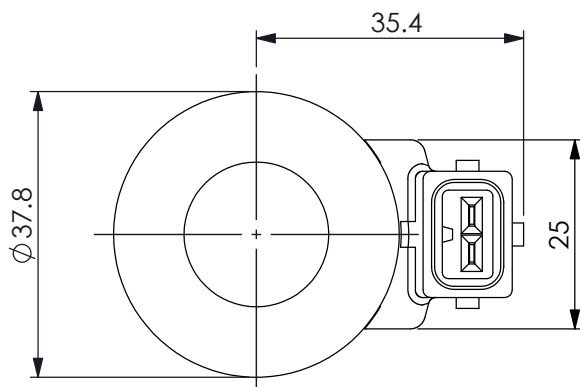
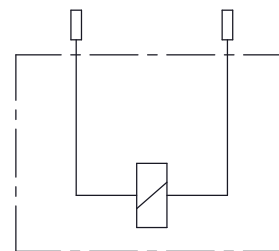


Ordering Code: **EC-19A-X-Y-Z**



UNIT:mm

While installing, please be sure that this side is toward to the solenoid cartridge valve.



TECHNICAL DATA

Weight: 0.23 kg

HEAT INSULATION CLASS H:
356°F (180°C)

Ambient temperature range:
-22+122°F (-30+50°C)

Available on request:
Different Voltages -
Different connectors.

Inlet voltage fluctuations must not exceed $\pm 10\%$ of nominal voltage to obtain correct operation and long life of coils.

Connector Environment Rating: IP67

| X | Nominal Power (W) (At rated voltage) | |
|--|---|--|
| 220 | 22 Watt. | |
| *The nominal power (W) at maximum current with proportional control is 9 watt. | | |

| Y | Connections | |
|---|----------------|--|
| B | AMP JUNIOR (V) | |
| | | |
| | | |

| Z | Voltage (V) Nominal | Resistance (Ω) 20~25 °C | Maximum Current (A) (Proportional Control) | |
|---|------------------------|-------------------------------------|---|--|
| E | 12V DC | 6.4 \pm 8% | 1150 mA | |
| D | 24V DC | 26.2 \pm 5% | 590 mA | |
| J | 28V DC | 35.2 \pm 5% | 500 mA | |
| | | | | |
| | | | | |
| | | | | |
| | | | | |
| | | | | |