
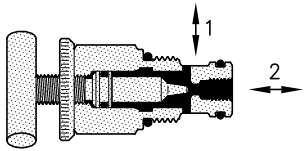

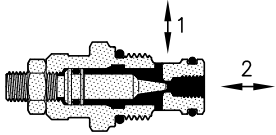

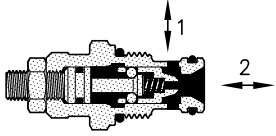
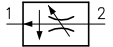
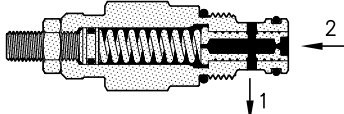
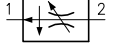
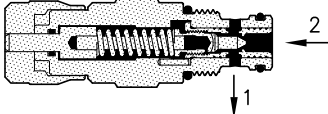


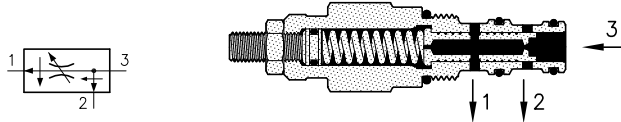
**Flow control valves.**

They can be classified as needle valves or as compensated flow controls two or three way; are used to keep a check on actuators speed, to share out the flow or as fuse valves.

Main features	Type	Q max. (l/min.)	P max. (bar)	Technical schedule
<p><b>RDB</b> series – bidirectional poppet-type. They have a very fine adjustment which allows to control also narrow flow at high pressure in both the flow's directions. Completely closed they guarantee a perfect shut off. External parts realized in stainless steel and brass.</p>  	<b>RDB 20/B</b>	20	315	06.010
<p><b>RDB</b> series – bidirectional poppet-type. They have a very fine adjustment which allows to control also narrow flow at high pressure in both the flow's directions. Completely closed they guarantee a perfect shut off.</p>  	<b>RDB 20</b>	20	350	06.011
	<b>RDB 30</b>	50	350	06.020
<p><b>RDA – RDI</b> series – with reverse free flow check poppet-type. They allow the flow's control in direction 2 – 1 (RDA) and 1 – 2 (RDI); the reverse flow is free. Even if perfectly closed it's not shut off.</p>  	<b>RDA 20</b>	30	350	06.030
	<b>RDA 30</b>	60	350	06.040
	<b>RDI 20</b>	30	350	06.030
	<b>RDI 30</b>	60	350	06.040
<p><b>RDC</b> series – two-way pressure compensated valves. They keep the flow adjusted uniform independently from the pressure and accept a reverse limited flow in relation to the required adjusting range.</p>  	<b>RDC 20</b>	18	315	06.050
	<b>RDC 30</b>	45	315	06.060
	<b>RDC 50</b>	60	315	06.080
<p><b>RDZ – RDC HF</b> series – two-way pressure compensated valves. They keep the flow adjusted uniform independently from the pressure. The peculiar feature of these vales is the high sensitive adjusting obtained with 1 knob turn (RDZ) or 3 knob turns (RDC HF) and without effort.</p>  	<b>RDC 30/ ..-HF</b>	40	315	06.065
	<b>RDZ 30</b>	24	315	06.070
	<b>RDC 50/ ..-HF</b>	120	315	
	<b>RDZ 50</b>	75	315	06.085

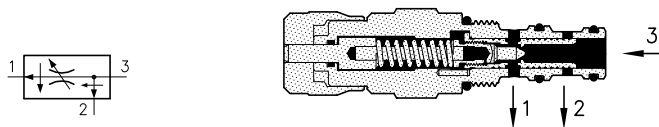
Main features

**DPC** series – three-way pressure compensated priority type.  
They keep the flow adjusted on line 1 uniform independently from the pressure and send the excess flow to line 2 which may be utilized as second use or may be sent to return line (T).



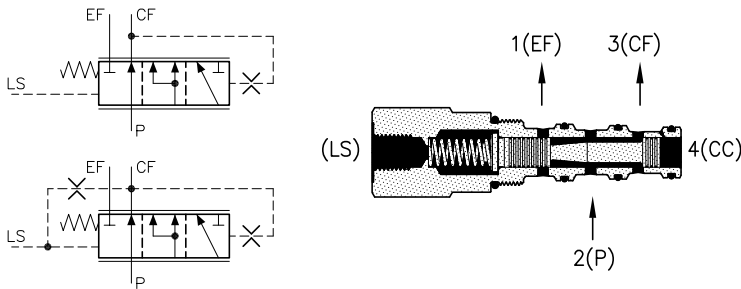
Type	Q max. (l/min.)	P max. (bar)	Technical schedule
<b>DPC 20</b>	30/18	315	06.090
<b>DPC 30</b>	60/45	315	06.100
<b>DPC 50</b>	120/60	315	06.120

**DPZ – DPC HF** series – three-way pressure compensated priority type.  
They keep the flow adjusted on line 1 uniform independently from the pressure and send the excess flow to line 2 which may be utilized as second use or may be sent to return line (T).  
The peculiar feature of these valves is the high sensitive adjusting obtained with 1 knob turn (DPZ) or 3 knob turns (DPC HF) and without effort.



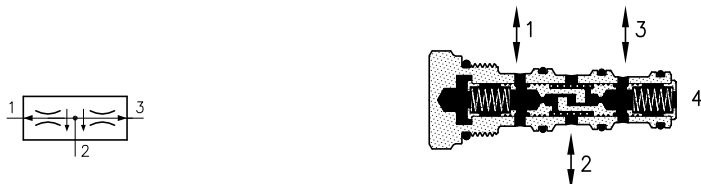
<b>DPC 30/..-HF</b>	60/40	315	06.105
<b>DPZ 30</b>	60/24	315	06.110
<b>DPC 50/..-HF</b>	160/120	315	
<b>DPZ 50</b>	120/75	315	06.130

**LSV** series – four way external Load Sensing signal.  
The priority valves LSV series are to be used mainly on hydraulic steering system with power steering unit type Load Sensing.  
These valves always assure priority to the power steering unit, automatically meter the required flow and send the overflow to port 1(EF).

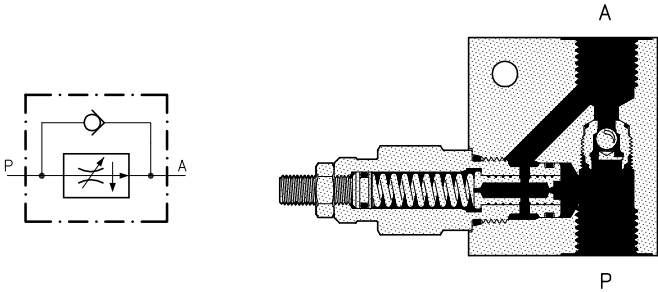
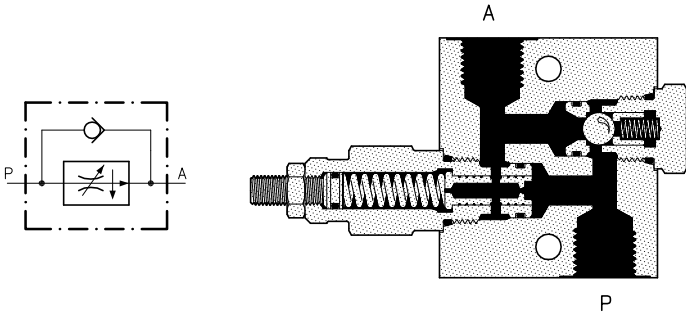
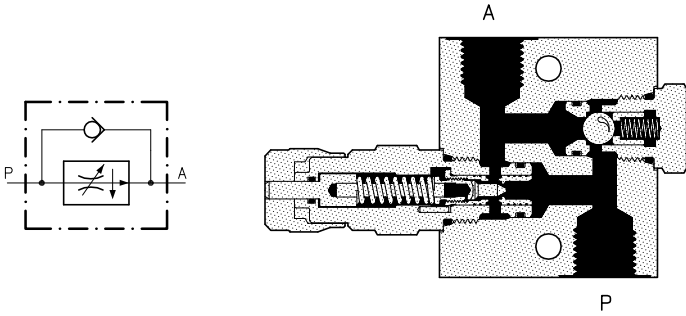


<b>LSV 30</b>	60	315	06.140 06.145
---------------	----	-----	------------------

**DCC** series.  
They are flow divider/combiner pressure compensated.  
When the inlet flow is through chamber 2 they share out the flow into two parts alike; by inverse working they join together the flows coming from chambers 1 and 3.  
The narrow mistake margin makes them suitable for applications where simultaneous movements or cylinders ranging are required.  
On request are available different ratios.  
These three-way valves must be seated in a four-way cavity with chamber 4 closed.

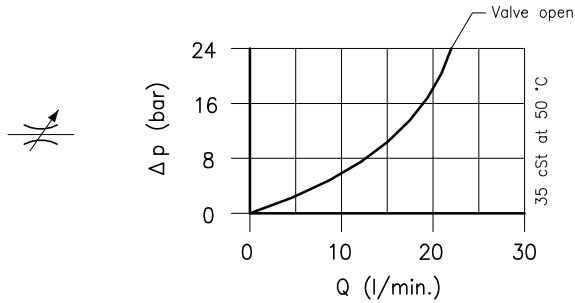


<b>DCC 30</b>	5-40	210	06.150
<b>DCC 50</b>	15-120	210	06.160

Main features	Type	Q max. (l/min.)	P max. (bar)	Technical schedule
<p><b>RDC series CSL 10</b> circuit.</p> <p>They are composed of a flow regulator pressure compencated RDC 20 type and a check valve that allows the free reverse flow.</p> 	<p><b>RDC 20 CSL 10</b></p>	<p>20</p>	<p>315</p>	<p>06.180</p>
<p><b>RDC series CSL 10</b> circuit.</p> <p>They are composed of a flow regulator pressure compencated RDC 30 type and a check valve that allows the free reverse flow.</p> 	<p><b>RDC 30 CSL 10</b></p>	<p>45</p>	<p>315</p>	<p>06.190</p>
<p><b>RDZ series CSL 10</b> circuit.</p> <p>They are composed of a flow regulator pressure compencated RDZ 30 type and a check valve that allows the free reverse flow.</p> 	<p><b>RDZ 30 CSL 10</b></p>	<p>24</p>	<p>315</p>	<p>06.200</p>

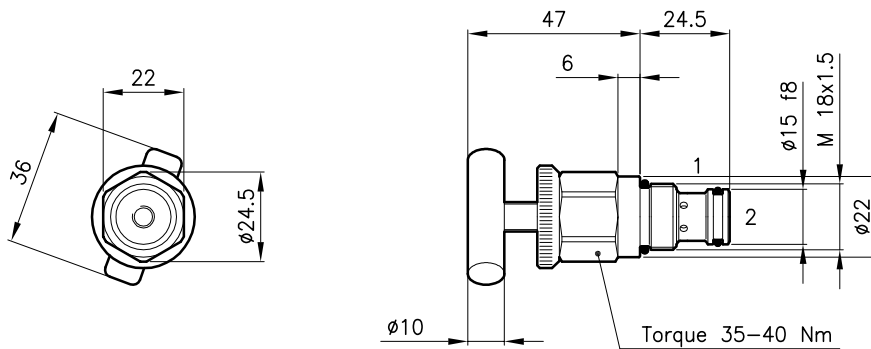
**Technical features**

The bidirectional needle valves RDB 20/B are a version for fine adjustment of narrow flow. Complete adjustment range is obtained in about six handknob turns till total valve shut off. The flow direction is indifferent.



Cavity (For dimensions see catalogue 17.000)	S 20/2
Max. adjusted flow (Δp 6 bar) (l/min.)	0 – 10
Max. adjusted flow (Δp 12 bar) (l/min.)	0 – 16
Max. adjusted flow (Δp 24 bar) (l/min.)	0 – 22
Max. pressure (bar)	315
Fluid viscosity range (cSt)	2.8 – 380
Fluid temperature range (°C)	-20 +80
Mass (kg)	0.115
Leakage when closed (cm <sup>3</sup> /1)	Total shut off
Hydraulic fluid; mineral oil HM and HV	ISO 6074
Recommended filtration; 19/15 ISO 4466 (25 μ absolutes)	
Standard seals in Polyurethane and Buna N	

**Dimensions**



Handknob and screw adjustment realized in stainless steel.  
External exagon and climping lock ring realized in brass.

**Ordering informations**

**RDB 20/B**

**RDB 20** = Valve type



Adjustment type

**B** = Handknob adjustment



Codes:

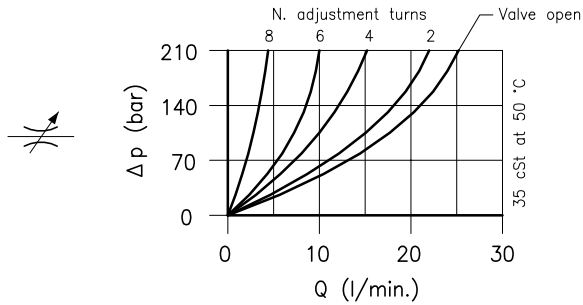
RDB 20/B 23 011 126

External seals kit 90 620 100

RDB 20/B valves can be assembled on standard bodies 20-LO series; for dimensions see catalogue 16.010

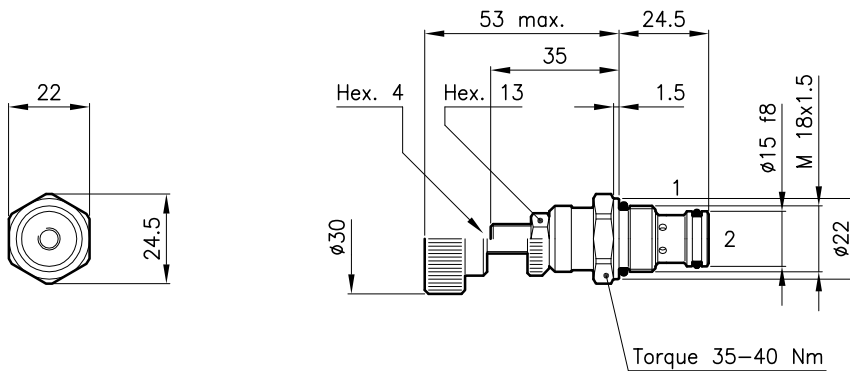
**Technical features**

The bidirectional needle valves RDB 20/175 are a version for fine and micrometric adjustment of narrow flow. Complete adjustment range is obtained in about ten handknob or screw turns till total valve shut off. The flow direction is indifferent.



Cavity (For dimensions see catalogue 17.000)	S 20/2
Max. adjusted flow ( $\Delta p$ 70 bar) (l/min.)	0 - 10
Max. adjusted flow ( $\Delta p$ 140 bar) (l/min.)	0 - 16
Max. adjusted flow ( $\Delta p$ 210 bar) (l/min.)	0 - 22
Max. pressure (bar)	350
Fluid viscosity range (cSt)	2.8 - 380
Fluid temperature range (°C)	-20 +80
Mass (kg)	0.090
Leakage when closed (cm <sup>3</sup> /1)	Total shut off
Hydraulic fluid; mineral oil HM and HV ISO 6074	
Recommended filtration; 19/15 ISO 4466 (25 $\mu$ absolutes)	
Standard seals in Polyurethane and Buna N	

**Dimensions**



**Ordering informations**

**RDB 20/175-V**

**RDB 20** = Valve type



**175** = Plunger type (only option)

Adjustment type

**N** = Standard adjustment



**V** = Handknob adjustment



Codes:

RDB 20/175-N 23 011 121

RDB 20/175-V 23 011 108

External seals kit 90 620 100

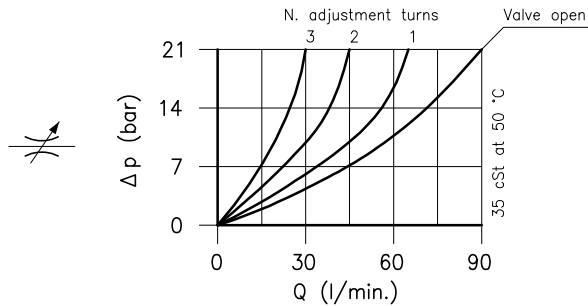
RDB 20 valves can be assembled on standard bodies 20-LO series; for dimensions see catalogue 16.010

**Technical features**

The bidirectional needle valves RDB 30 are a version particularly suitable for the use combined with logic valves for flow control.

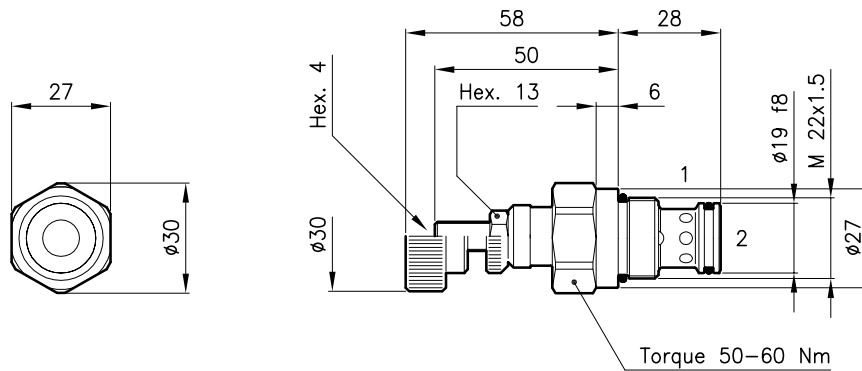
Complete adjustment range is obtained in about four handknob or screw turns till total valve shut off.

The flow direction is indifferent.



Cavity	(For dimensions see catalogue 17.000)	S 30/2
Max. adjusted flow ( $\Delta p$ 7 bar)	(l/min.)	0 - 50
Max. adjusted flow ( $\Delta p$ 14 bar)	(l/min.)	0 - 70
Max. pressure	(bar)	350
Fluid viscosity range	(cSt)	2.8 - 380
Fluid temperature range	(°C)	-20 +80
Mass	(kg)	0.170
Leakage when closed	(cm <sup>3</sup> /1)	Total shut off
Hydraulic fluid; mineral oil HM and HV ISO 6074		
Recommended filtration; 19/15 ISO 4466 (25 $\mu$ absolutes)		
Standard seals in Polyurethane and Buna N		

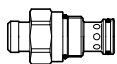
**Dimensions**



**Ordering informations**

**RDB 30/N**

**RDB 30** = Valve type



Adjustment type

**N** = Standard adjustment

**V** = Handknob adjustment



Codes:

RDB 30/N 33 011 141

RDB 30/V 33 011 142

External seals kit 90 620 103

RDB 30 valves can be assembled on standard bodies 30-LO series; for dimensions see catalogue 16.010

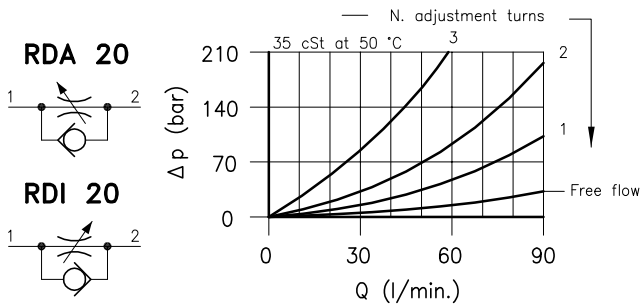
**Technical features**

Unidirectional needle valves

RDA 20 version for flow's control in direction 2 - 1

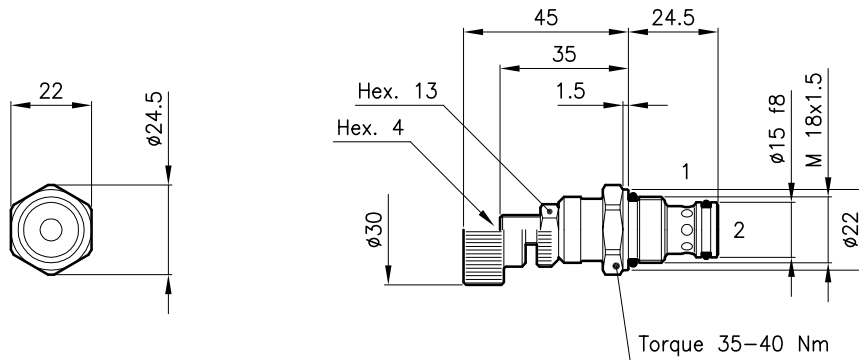
RDI 20 version for flow's control in direction 1 - 2

Complete adjustment range is obtained in about four handknob or screw turns till total closing valve (non shut off).



Cavity (For dimensions see catalogue 17.000)	S 20/2
Max. adjusted flow ( $\Delta p$ 35 bar) (l/min.)	0 - 15
Max. adjusted flow ( $\Delta p$ 70 bar) (l/min.)	0 - 25
Max. adjusted flow ( $\Delta p$ 140 bar) (l/min.)	0 - 30
Max. pressure (bar)	350
Fluid viscosity range (cSt)	2.8 - 380
Fluid temperature range (°C)	-20 +80
Mass (kg)	0.090
Leakage when closed (cm <sup>3</sup> /1)	100
Hydraulic fluid; mineral oil HM and HV	ISO 6074
Recommended filtration; 19/15 ISO 4466 (25 μ absolutes)	
Standard seals in Polyurethane and Buna N	

**Dimensions**



**Ordering informations**

**RDA 20/N**

Valve type



**RDA 20** =

**RDI 20** =

Adjustment type

**N** = Standard adjustment

**V** = Handknob adjustment

Codes:

RDA 20/N 23 011 119

RDA 20/V 23 011 120

RDI 20/N 23 011 152

RDI 20/V 23 011 153

External seals kit 90 620 100

RDA 20 and RDI 20 valves can be assembled on standard bodies 20-LO series; for dimensions see catalogue 16.010

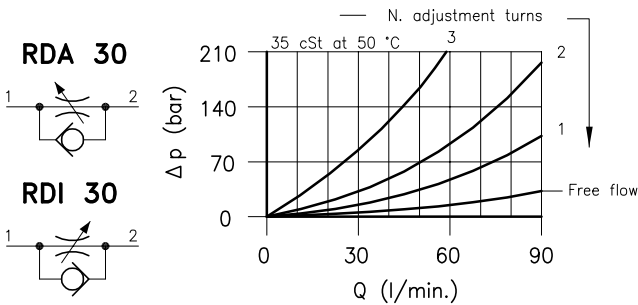
**Technical features**

Unidirectional needle valves

RDA 30 version for flow's control in direction 2 - 1

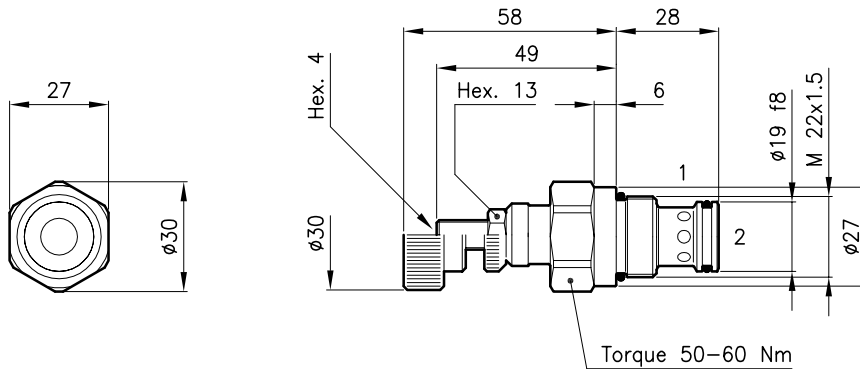
RDI 30 version for flow's control in direction 1 - 2

Complete adjustment range is obtained in about four handknob or screw turns till total closing valve (non shut off).



Cavity (For dimensions see catalogue 17.000)	S 30/2
Max. adjusted flow ( $\Delta p$ 35 bar) (l/min.)	0 - 40
Max. adjusted flow ( $\Delta p$ 70 bar) (l/min.)	0 - 70
Max. adjusted flow ( $\Delta p$ 140 bar) (l/min.)	0 - 90
Max. pressure (bar)	350
Fluid viscosity range (cSt)	2.8 - 380
Fluid temperature range (°C)	-20 +80
Mass (kg)	0.170
Leakage when closed (cm <sup>3</sup> /1)	100
Hydraulic fluid; mineral oil HM and HV	ISO 6074
Recommended filtration; 19/15 ISO 4466 (25 $\mu$ absolutes)	
Standard seals in Polyurethane and Buna N	

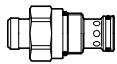
**Dimensions**



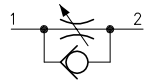
**Ordering informations**

**RDA 30/N**

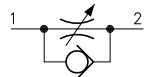
Valve type



**RDA 30** =



**RDI 30** =



Adjustment type

**N** = Standard adjustment



**V** = Handknob adjustment



Codes:

RDA 30/N 33 011 128

RDA 30/V 33 011 127

RDI 30/N 33 011 190

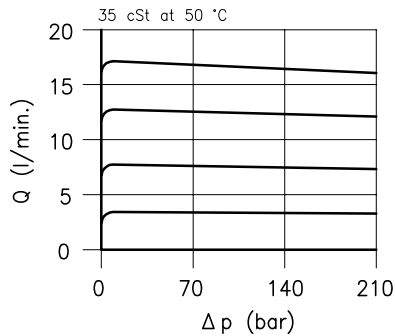
RDI 30/V 33 011 191

External seals kit 90 620 103

RDA 30 and RDI 30 valves can be assembled on standard bodies 30-LO series; for dimensions see catalogue 16.010

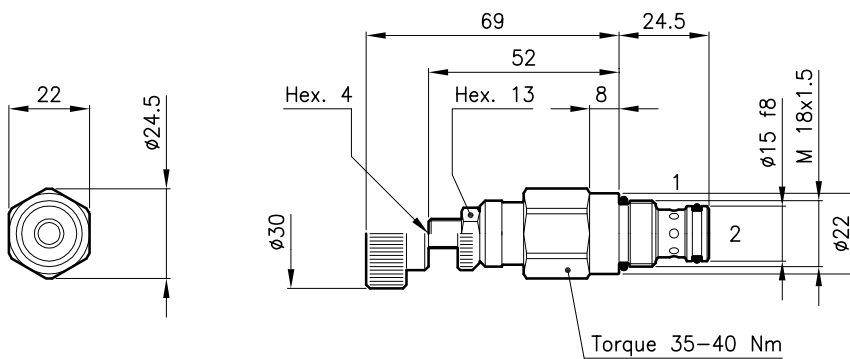


**Technical features**



Cavity	(For dimensions see catalogue 17.000)	S 20/2
Flow setting range ± 10% (l/min.)	type U	0.6 – 2.2
	type D	1.5 – 4.5
	type T	3.2 – 9.5
	type Q	6 – 18
Max. pressure	(bar)	315
Fluid viscosity range	(cSt)	2.8 – 380
Fluid temperature range	(°C)	-20 +80
Mass (Standard adjustment type N)	(kg)	0.140
Hydraulic fluid; mineral oil HM and HV		ISO 6074
Recommended filtration; 19/15 ISO 4466 (25 μ absolutes)		
Standard seals in Polyurethane and Buna N		

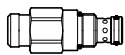
**Dimensions**



**Ordering informations**

**RDC 20/D-N**

RDC 20 = Valve type

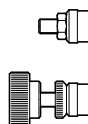


Flow setting range

- U** = 0.6 – 2.2 l/min
- D** = 1.5 – 4.5 l/min
- T** = 3.2 – 9.5 l/min
- Q** = 6 – 18 l/min

Adjustment type

- N** = Standard adjustment
- V** = Handknob adjustment

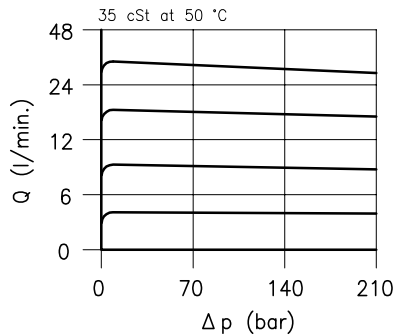


Codes:

RDC 20/U-N	23 011 100
RDC 20/D-N	23 011 101
RDC 20/T-N	23 011 102
RDC 20/Q-N	23 011 103
RDC 20/U-V	23 011 111
RDC 20/D-V	23 011 112
RDC 20/T-V	23 011 113
RDC 20/Q-V	23 011 114
External seals kit	90 620 100

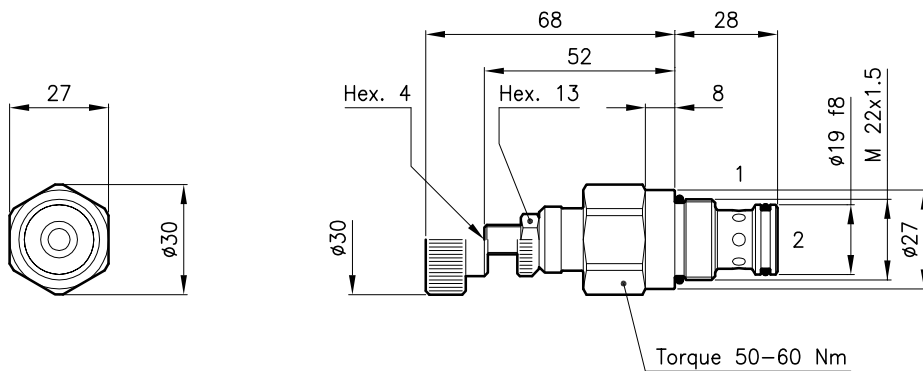
RDC 20 valves can be assembled on standard bodies 20-LO series: for dimensions see catalogue 16.010

**Technical features**



Cavity	(For dimensions see catalogue 17.000)	S 30/2
Flow setting range ± 10% (l/min.)	type U	3 - 6
	type D	6 - 11
	type T	13 - 25
	type Q	25 - 45
Max. pressure	(bar)	315
Flow viscosity range	(cSt)	2.8 - 380
Flow temperature range	(°C)	-20 +80
Mass (Standard adjustment type N)	(kg)	0.260
Hydraulic fluid; mineral oil HM and HV		ISO 6074
Recommended filtration; 19/15 ISO 4466 (25 μ absolutes)		
Standard seals in Polyurethane and Buna N		

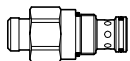
**Dimensions**



**Ordering informations**

**RDC 30/D-N**

RDC 30 = Valve type

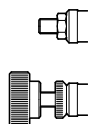


Flow setting range

- U** = 3 - 6 l/min
- D** = 6 - 11 l/min
- T** = 13 - 25 l/min
- Q** = 25 - 45 l/min

Adjustment type

- N** = Standard adjustment
- V** = Handknob adjustment

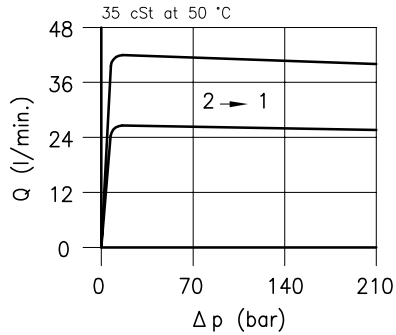
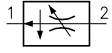


Codes:

RDC 30/U-N	33 011 119
RDC 30/D-N	33 011 120
RDC 30/T-N	33 011 121
RDC 30/Q-N	33 011 122
RDC 30/U-V	33 011 123
RDC 30/D-V	33 011 124
RDC 30/T-V	33 011 125
RDC 30/Q-V	33 011 126
External seals kit	90 620 103

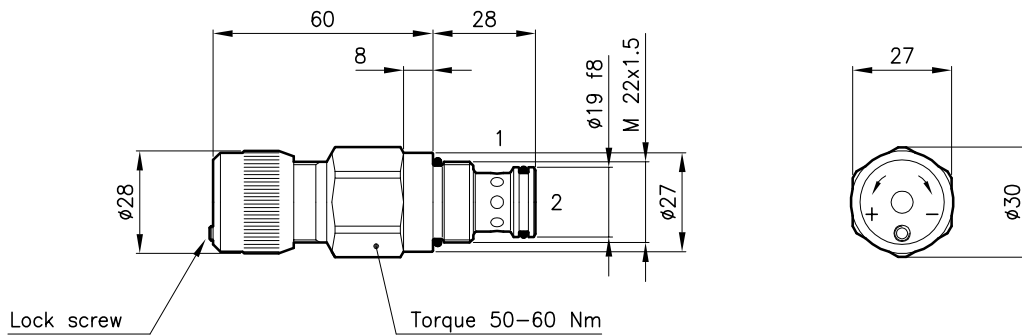
RDC 30 valves can be assembled on standard bodies 30-LO series; for dimensions see catalogue 16.010

**Technical features**



Cavity	(For dimensions see catalogue 17.000)	S 30/2
Flow setting range (l/min.)	type 20	0.05 - 25
	type 50	0.05 - 40
Max. pressure	(bar)	315
Min. pressure difference	(bar)	7
Fluid viscosity range	(cSt)	2.8 - 380
Fluid temperature range	(°C)	-20 +80
Mass	(kg)	0.240
Hydraulic fluid; mineral oil HM and HV ISO 6074		
Recommended filtration; 19/15 ISO 4466 (25 μ absolutes)		
Complete adjustment range obtained with 3 knob turns		
Standard seals in Polyurethane and Buna N		

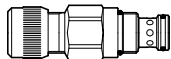
**Dimensions**



**Ordering informations**

**RDC 30/20-HF**

**RDC 30** = Valve type



Flow setting range

**20** = 0.05 - 25 l/min

**50** = 0.05 - 40 l/min

Adjustment type

**HF** = With lock screw

Codes:

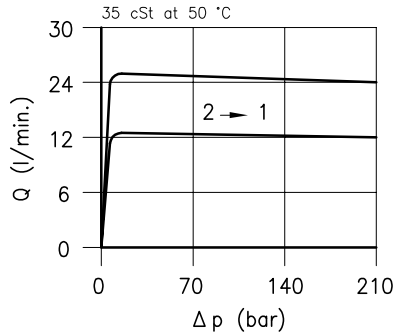
RDC 30/20-HF 33 011 187

RDC 30/50-HF 33 011 188

External seals kit 90 620 103

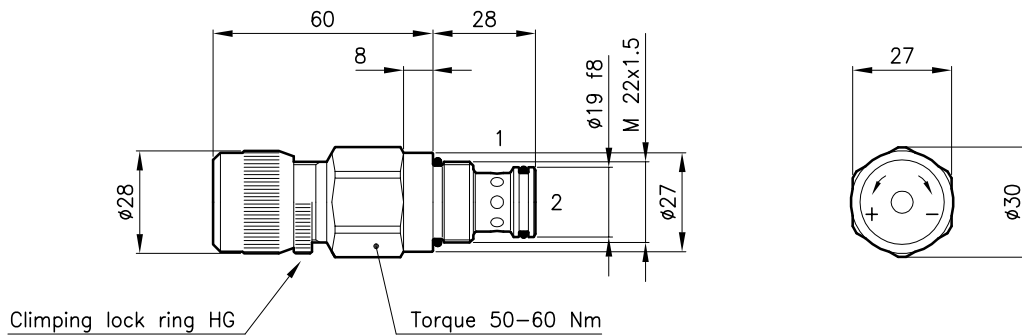
RDC 30 valves can be assembled on standard bodies 30-L0 series; for dimensions see catalogue 16.010

**Technical features**



Cavity	(For dimensions see catalogue 17.000)	S 30/2
Flow setting range (l/min.)	type D	0.05 - 12
	type Q	0.05 - 24
Max. pressure	(bar)	315
Min. pressure difference	(bar)	7
Fluid viscosity range	(cSt)	2.8 - 380
Fluid temperature range	(°C)	-20 +80
Mass	(kg)	0.240
Hydraulic fluid; mineral oil HM and HV ISO 6074		
Recommended filtration; 19/15 ISO 4466 (25 μ absolutes)		
Complete adjustment range obtained with 1 knob turn		
Standard seals in Polyurethane and Buna N		

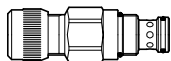
**Dimensions**



**Ordering informations**

**RDZ 30/D-H**

**RDZ 30** = Valve type



Flow setting range

**D** = 0.05 - 12 l/min

**Q** = 0.05 - 24 l/min

Adjustment type

**H** = Standard

**HG** = With clamping lock ring

Codes:

RDZ 30/D-H 33 011 117

RDZ 30/Q-H 33 011 118

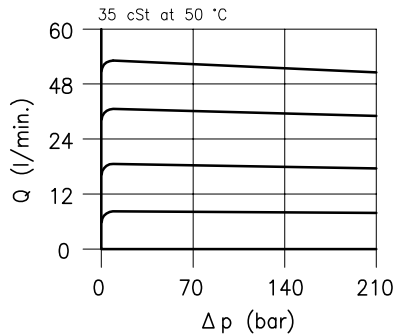
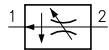
RDZ 30/D-HG 33 011 139

RDZ 30/Q-HG 33 011 140

External seals kit 90 620 103

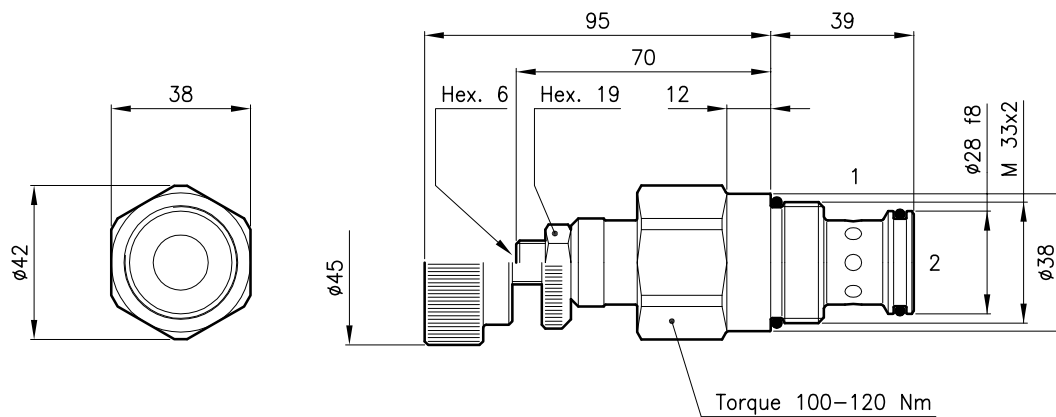
RDZ 30 valves can be assembled on standard bodies 30-LO series; for dimensions see catalogue 16.010

**Technical features**



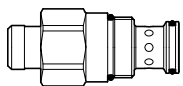
Cavity	(For dimensions see catalogue 17.000)	S 50/2
Flow setting range ± 10% (l/min.)	type U	4 – 8
	type D	8 – 16
	type T	16 – 30
	type Q	30 – 60
Max. pressure	(bar)	315
Fluid viscosity range	(cSt)	2.8 – 380
Fluid temperature range	(°C)	-20 +80
Mass (Standard adjustment type N)	(kg)	0.510
Hydraulic fluid; mineral oil HM and HV		ISO 6074
Recommended filtration; 19/15 ISO 4466 (25 μ absolutes)		
Standard seals in Polyurethane and Buna N		

**Dimensions**



**Ordering informations**

**RDC 50** = Valve type



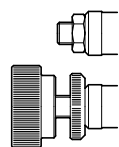
Flow setting range

- U** = 4 – 8 l/min
- D** = 8 – 16 l/min
- T** = 16 – 30 l/min
- Q** = 30 – 60 l/min

Adjustment type

- N** = Standard adjustment
- V** = Handknob adjustment

**RDC 50/D-N**

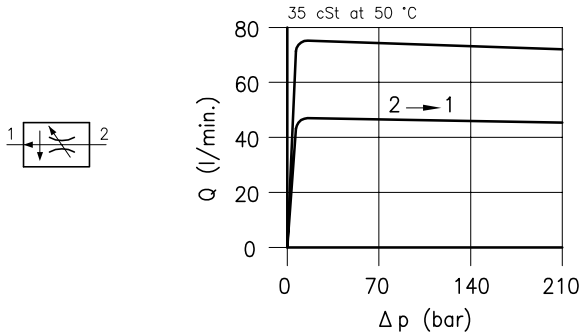


Codes:

RDC 50/U-N	53 011 104
RDC 50/D-N	53 011 105
RDC 50/T-N	53 011 106
RDC 50/Q-N	53 011 107
RDC 50/U-V	53 011 112
RDC 50/D-V	53 011 113
RDC 50/T-V	53 011 114
RDC 50/Q-V	53 011 115
External seals kit	90 620 106

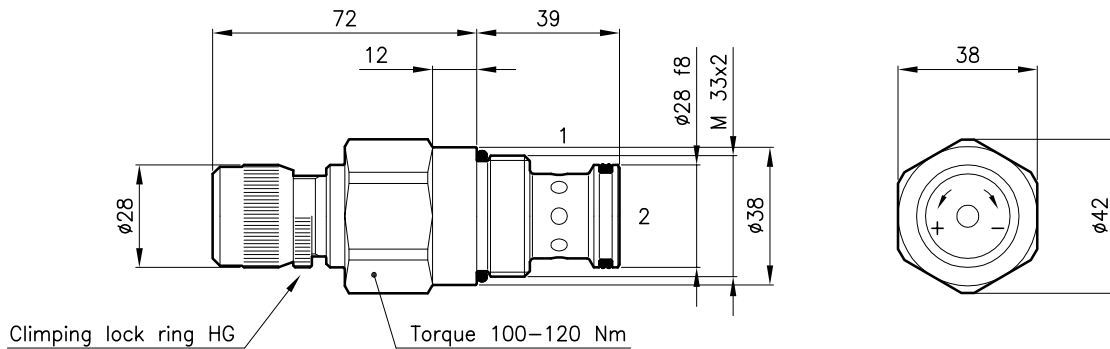
RDC 50 valves can be assembled on standard bodies 50-LO series; for dimensions see catalogue 16.010

**Technical features**



Cavity	(For dimensions see catalogue 17.000)	S 50/2
Flow setting range (l/min.)	type D	0.05 – 45
	type Q	0.05 – 75
Max. pressure	(bar)	315
Min. pressure difference	(bar)	7
Fluid viscosity range	(cSt)	2.8 – 380
Fluid temperature range	(°C)	-20 +80
Mass	(kg)	0.480
Hydraulic fluid; mineral oil HM and HV		ISO 6074
Recommended filtration; 19/15 ISO 4466 (25 μ absolutes)		
Complete adjustment range obtained with 1 knob turn		
Standard seals in Polyurethane and Buna N		

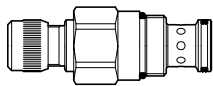
**Dimensions**



**Ordering informations**

**RDZ 50/D-H**

**RDZ 50** = Valve type



Flow setting range

**D** = 0.05 – 45 l/min

**Q** = 0.05 – 75 l/min

Adjustment type

**H** = Standard

**HG** = With clamping lock ring

Codes:

RDZ 50/D-H 53 011 122

RDZ 50/Q-H 53 011 123

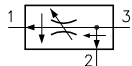
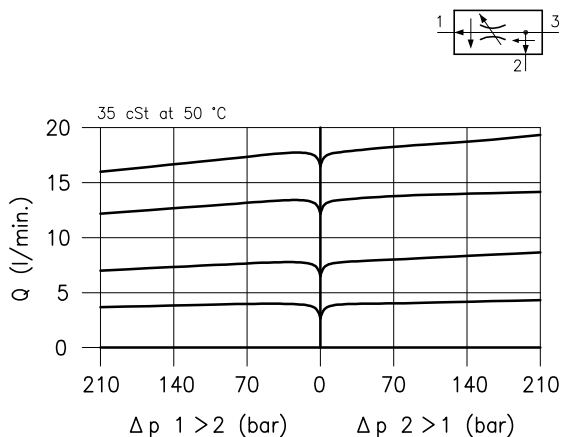
RDZ 50/D-HG 53 011 124

RDZ 50/Q-HG 53 011 125

External seals kit 90 620 106

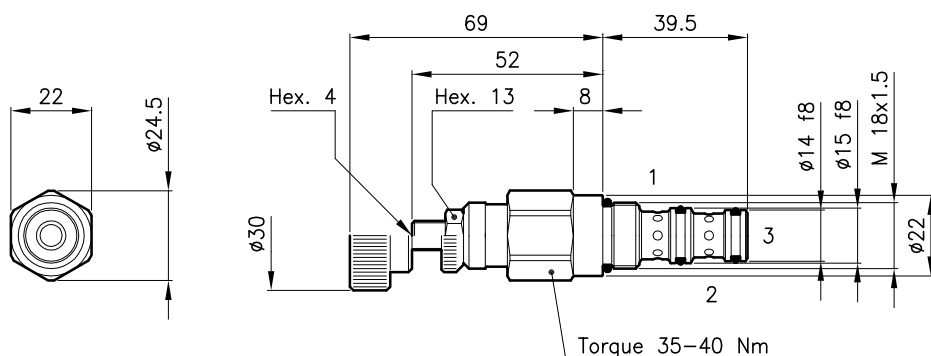
RDZ 50 valves can be assembled on standard bodies 50-LO series; for dimensions see catalogue 16.010

**Technical features**



Cavity	(For dimensions see catalogue 17.000)	S 20/3
Max. inlet flow	(l/min.)	30
Flow setting range ± 10% (l/min.)	type U	0.6 – 2.2
	type D	1.5 – 4.5
	type T	3.2 – 9.5
	type Q	6 – 18
Max. pressure	(bar)	315
Fluid viscosity range	(cSt)	2.8 – 380
Fluid temperature range	(°C)	-20 +80
Mass (Standard adjustment type N)	(kg)	0.160
Hydraulic fluid; mineral oil HM and HV		ISO 6074
Recommended filtration; 19/15 ISO 4466 (25 μ absolutes)		
Standard seals in Polyurethane and Buna N		

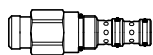
**Dimensions**



**Ordering informations**

**DPC 20/D-N**

RDC 20 = Valve type

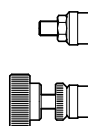


Flow setting range

- U** = 0.6 – 2.2 l/min
- D** = 1.5 – 4.5 l/min
- T** = 3.2 – 9.5 l/min
- Q** = 6 – 18 l/min

Adjustment type

- N** = Standard adjustment
- V** = Handknob adjustment

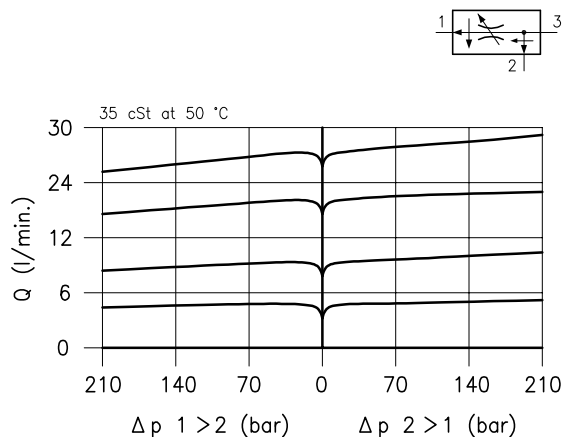


Codes:

DPC 20/U-N	23 011 104
DPC 20/D-N	23 011 105
DPC 20/T-N	23 011 106
DPC 20/Q-N	23 011 107
DPC 20/U-V	23 011 115
DPC 20/D-V	23 011 116
DPC 20/T-V	23 011 117
DPC 20/Q-V	23 011 118
External seals kit	90 620 101

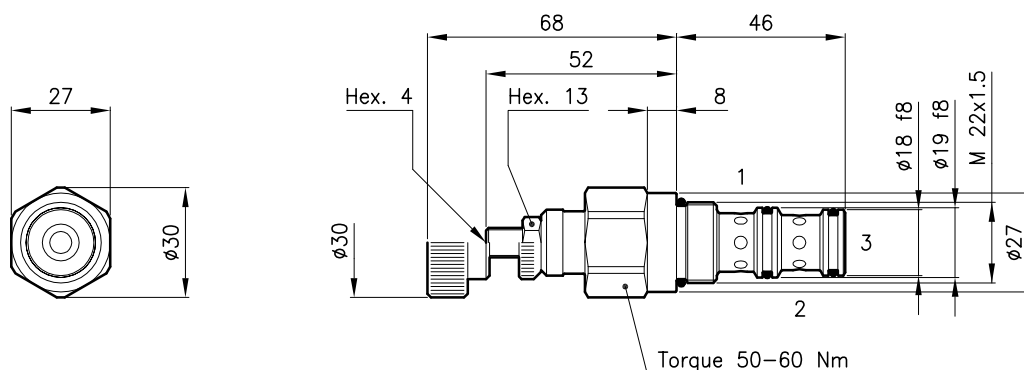
DPC 20 valves can be assembled on standard bodies 20-C3 series; for dimensions see catalogue 16.010

**Technical features**



Cavity (For dimensions see catalogue 17.000)	S 30/3	
Max. inlet flow (l/min.)	60	
Flow setting range $\pm 10\%$ (l/min.)	type U	3 - 6
	type D	6 - 11
	type T	13 - 25
	type Q	25 - 45
Max. pressure (bar)	315	
Fluid viscosity range (cSt)	2.8 - 380	
Fluid temperature range (°C)	-20 +80	
Mass (Standard adjustment type N) (kg)	0.200	
Hydraulic fluid; mineral oil HM and HV	ISO 6074	
Recommended filtration; 19/15 ISO 4466 (25 $\mu$ absolutes)		
Standard seals in Polyurethane and Buna N		

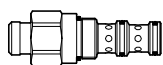
**Dimensions**



**Ordering informations**

**DPC 30/D-N**

DPC 30 = Valve type

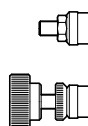


Flow setting range

- U** = 3 - 6 l/min
- D** = 6 - 11 l/min
- T** = 13 - 25 l/min
- Q** = 25 - 45 l/min

Adjustment type

- N** = Standard adjustment
- V** = Handknob adjustment



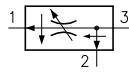
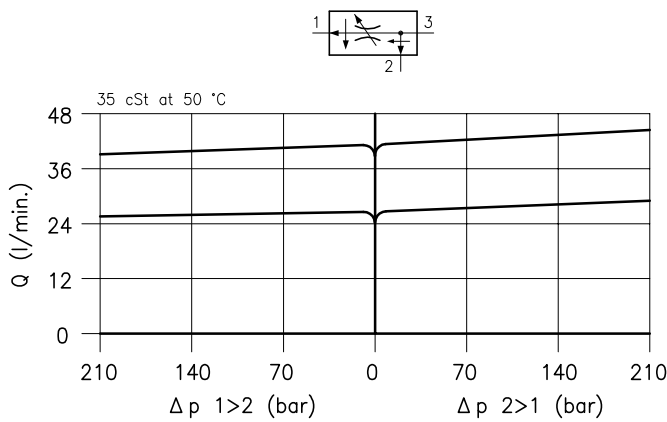
Codes:

DPC 30/U-N	33 011 109
DPC 30/D-N	33 011 110
DPC 30/T-N	33 011 111
DPC 30/Q-N	33 011 112
DPC 30/U-V	33 011 105
DPC 30/D-V	33 011 106
DPC 30/T-V	33 011 107
DPC 30/Q-V	33 011 108
External seals kit	90 620 104

DPC 30 valves can be assembled on standard bodies 30-C3 series; for dimensions see catalogue 16.010

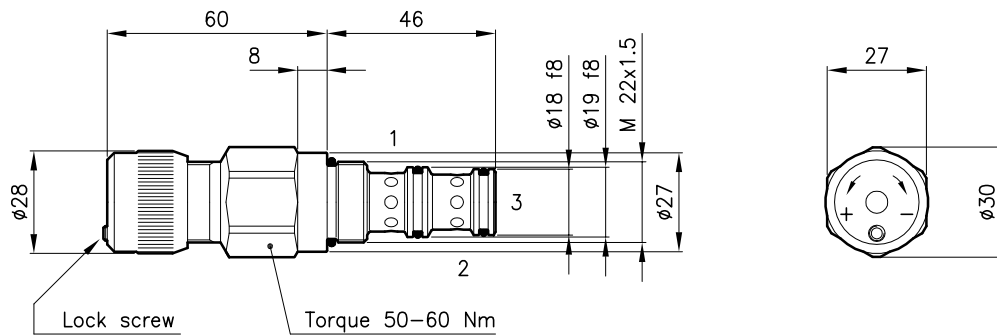


**Technical features**



Cavity	(For dimensions see catalogue 17.000)	S 30/3
Max. inlet flow	(l/min.)	60
Flow setting range	(l/min.)	type 20
		type 50
Max. pressure	(bar)	315
Min pressure difference	(bar)	7
Fluid viscosity range	(cSt)	2.8 - 380
Fluid temperature range	(°C)	-20 +80
Mass	(kg)	0.260
Hydraulic fluid; mineral oil HM and HV ISO 6074		
Recommended filtration; 19/15 ISO 4466 (25 μ absolutes)		
Complete adjustment range obtained with 3 knob turns		
Standard seals in Polyurethane and Buna N		

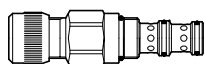
**Dimensions**



**Ordering informations**

**DPC 30/20-HF**

**DPC 30** = Valve type



Flow setting range

**20** = 0.05 - 25 l/min

**50** = 0.05 - 40 l/min

Adjustment type

**HF** = With lock screw

Codes:

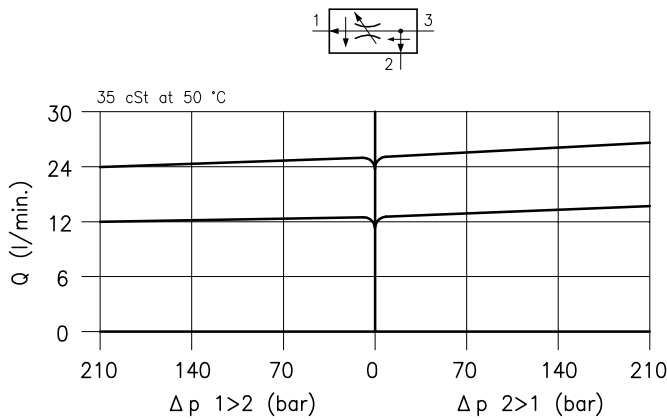
DPC 30/20-HF      33 011 184

DPC 30/50-HF      33 011 186

External seals kit      90 620 104

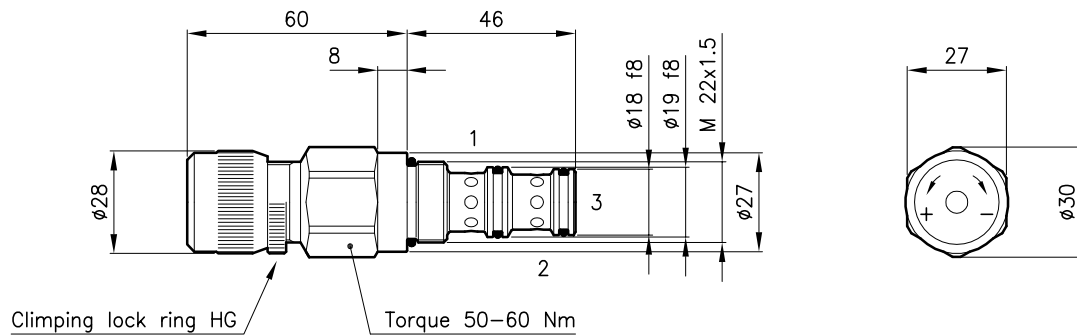
DPC 30 valves can be assembled on standard bodies 30-C3 series; for dimensions see catalogue 16.010

**Technical features**



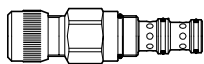
Cavity	(For dimensions see catalogue 17.000)	S 30/3
Max. inlet flow	(l/min.)	60
Flow setting range	(l/min.)	type D 0.05 – 12
		type Q 0.05 – 24
Max. pressure	(bar)	315
Min pressure difference	(bar)	7
Fluid viscosity range	(cSt)	2.8 – 380
Fluid temperature range	(°C)	-20 +80
Mass	(kg)	0.260
Hydraulic fluid; mineral oil HM and HV ISO 6074		
Recommended filtration; 19/15 ISO 4466 (25 μ absolutes)		
Complete adjustment range obtained with 1 knob turn		
Standard seals in Polyurethane and Buna N		

**Dimensions**



**Ordering informations**

**DPZ 30** = Valve type



Flow setting range

**D** = 0.05 – 12 l/min

**Q** = 0.05 – 24 l/min

Adjustment type

**H** = Standard

**HG** = With clipping lock ring

**DPZ 30/D-H**

Codes:

DPZ 30/D-H 33 011 115

DPZ 30/Q-H 33 011 100

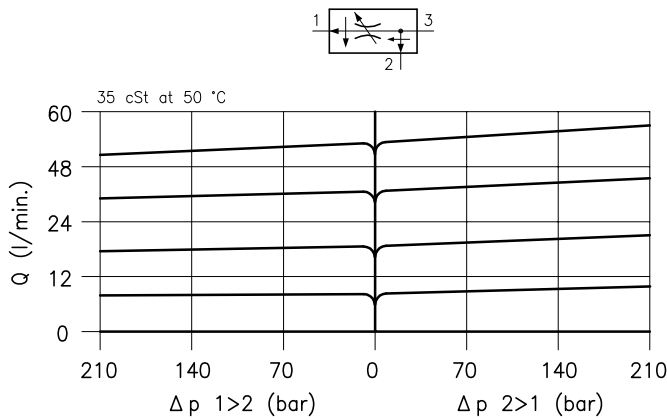
DPZ 30/D-HG 33 011 146

DPZ 30/Q-HG 33 011 147

External seals kit 90 620 104

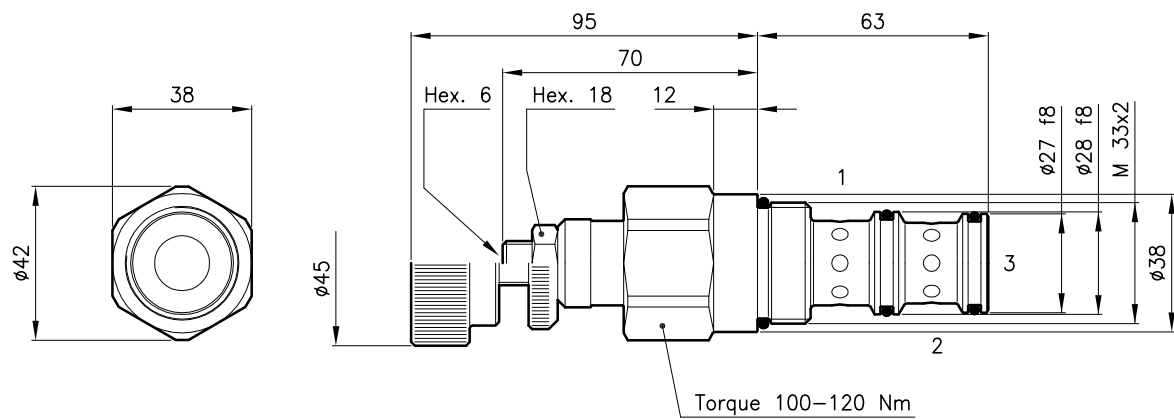
DPZ 30 valves can be assembled on standard bodies 30-C3 series; for dimensions see catalogue 16.010

**Technical features**



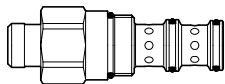
Cavity (For dimensions see catalogue 17.000)	S 50/3	
Max. inlet flow (l/min.)	120	
Flow setting range $\pm 10\%$ (l/min.)	type U	4 – 8
	type D	8 – 16
	type T	16 – 30
	type Q	30 – 60
Max. pressure (bar)	315	
Fluid viscosity range (cSt)	2.8 – 380	
Fluid temperature range (°C)	-20 +80	
Mass (Standard adjustment type N) (kg)	0.580	
Hydraulic fluid; mineral oil HM and HV	ISO 6074	
Recommended filtration; 19/15 ISO 4466 (25 $\mu$ absolutes)		
Standard seals in Polyurethane and Buna N		

**Dimensions**



**Ordering informations**

**DPC 50** = Valve type



Flow setting range

**U** = 4 – 8 l/min

**D** = 8 – 16 l/min

**T** = 16 – 30 l/min

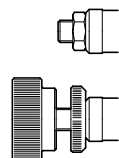
**Q** = 30 – 60 l/min

Adjustment type

**N** = Standard adjustment

**V** = Handknob adjustment

**DPC 50/D-N**



Codes:

DPC 50/U-N 53 011 100

DPC 50/D-N 53 011 101

DPC 50/T-N 53 011 102

DPC 50/Q-N 53 011 103

DPC 50/U-V 53 011 116

DPC 50/D-V 53 011 117

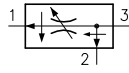
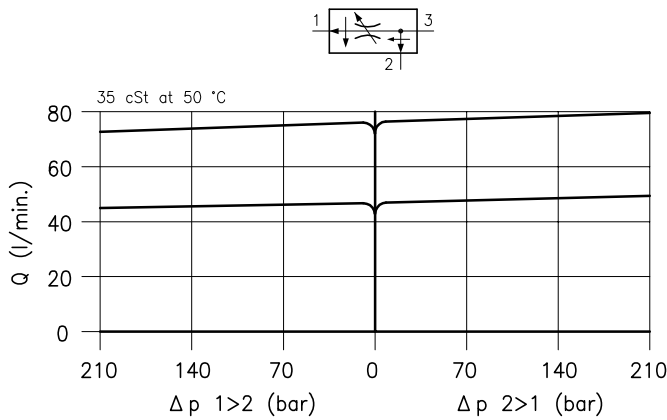
DPC 50/T-V 53 011 118

DPC 50/Q-V 53 011 119

External seals kit 90 620 107

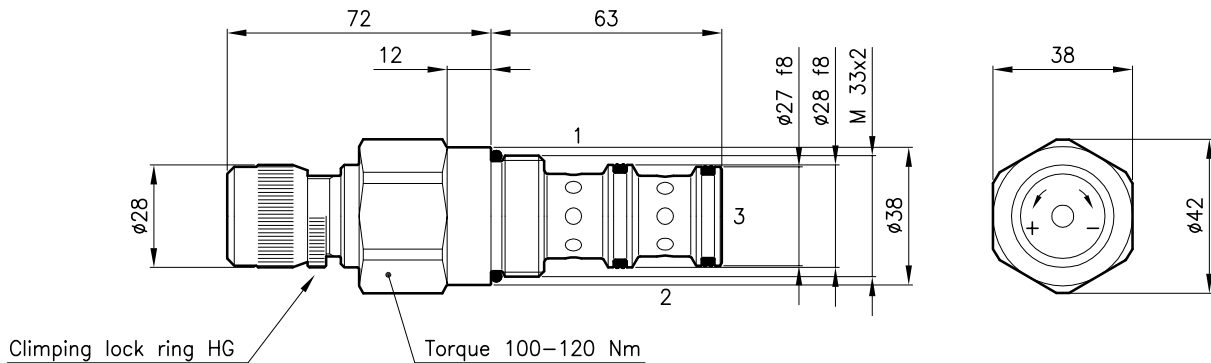
DPC 50 valves can be assembled on standard bodies 50-C3 series; for dimensions see catalogue 16.010

**Technical features**



Cavity	(For dimensions see catalogue 17.000)	S 50/3
Max. inlet flow	(l/min.)	120
Flow setting range	(l/min.)	type D 0.05 – 45
		type Q 0.05 – 75
Max. pressure	(bar)	315
Min pressure difference	(bar)	7
Fluid viscosity range	(cSt)	2.8 – 380
Fluid temperature range	(°C)	-20 +80
Mass	(kg)	0.600
Hydraulic fluid; mineral oil HM and HV		ISO 6074
Recommended filtration; 19/15 ISO 4466 (25 μ absolutes)		
Complete adjustment range obtained with 1 knob turn		
Standard seals in Polyurethane and Buna N		

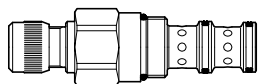
**Dimensions**



**Ordering informations**

**DPZ 50/D-H**

DPZ 50 = Valve type



Flow setting range

**D** = 0.05 – 45 l/min

**Q** = 0.05 – 75 l/min

Adjustment type

**H** = Standard

**HG** = With clamping lock ring

Codes:

DPZ 50/D-H      53 011 126

DPZ 50/Q-H      53 011 127

DPZ 50/D-HG      53 011 128

DPZ 50/Q-HG      53 011 129

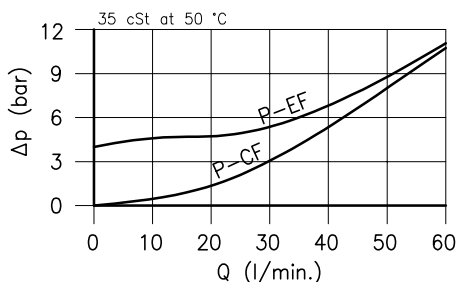
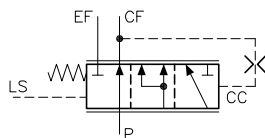
External seals kit      90 620 107

DPZ 50 valves can be assembled on standard bodies 50-C3 series; for dimensions see catalogue 16.010

### Technical features

The priority valves LSV 30 are to be used mainly on hydraulic steering systems with power steering unit type Load Sensing. These valves always assure priority to the power steering unit, automatically meter the required flow and send the overflow to port EF.

The lines P, LS, and EF must be protected with separated relief valves.

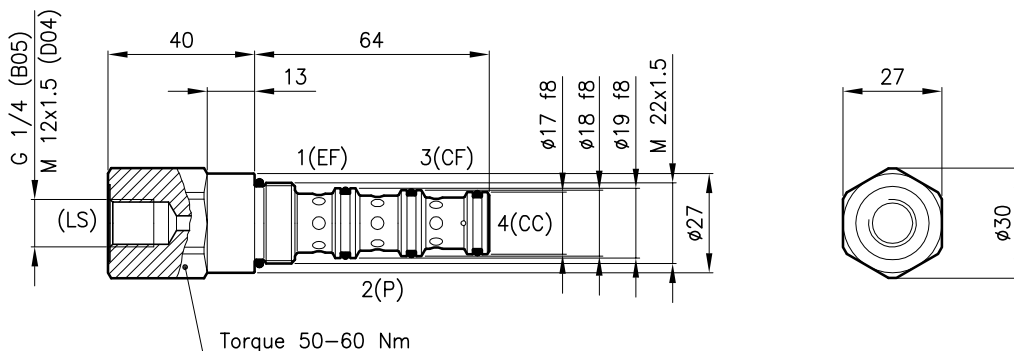


Cavity	(For dimensions see catalogue 17.000)	S 30/4
Max. flow in P line	(l/min.)	60
Max. flow in CF line	(l/min.)	40
Max. pressure in P line	(bar)	315
Max. pressure in EF line	(bar)	315
Max. pressure in CF line	(bar)	250
Fluid viscosity range	(cSt)	2.8 - 380
Fluid temperature range	(°C)	-20 +80
Mass	(kg)	0.210
Hydraulic fluid; mineral oil HM and HV ISO 6074		
Recommended filtration; 19/15 ISO 4466 (25 μ absolutes)		
Standard seals in Polyurethane and Buna N		

#### Connections:

- P = Pump
- CF = Priority flow (power steering)
- EF = Excedent flow (auxiliary)
- LS = Load sensing

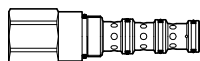
### Dimensions



### Ordering informations

## LSV 30/M-B05

LSV 30 = Valve type



Standard springs

Type Setting

**M** = 10 bar

LS port

**B05** = G 1/4

**D04** = M 12x1.5

#### Codes:

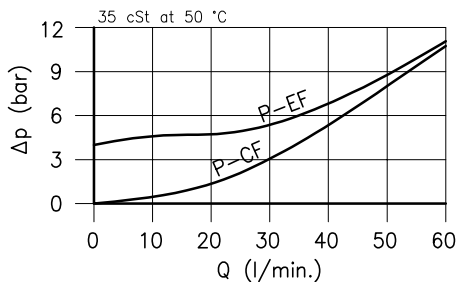
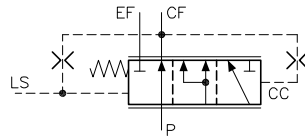
LSV 30/M-B05	33 011 144
LSV 30/M-D04	33 011 143
External seals kit	90 620 105

LSV 30 valves can be assembled on standard bodies 30-CC series; for dimensions see catalogue 16.011

**Technical features**

The priority valves LSV 30 are to be used mainly on hydraulic steering systems with power steering unit type Load Sensing. These valves always assure priority to the power steering unit, automatically meter the required flow and send the overflow to port EF.

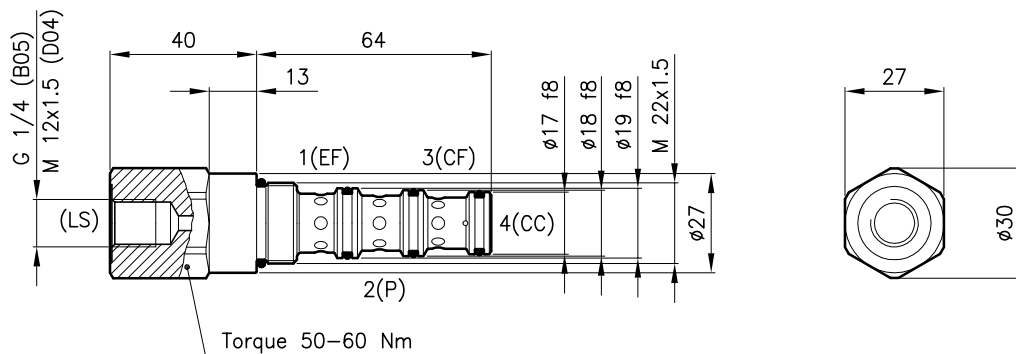
The lines P, LS, and EF must be protected with separated relief valves.



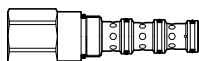
Cavity	(For dimensions see catalogue 17.000)	S 30/4
Max. flow in P line	(l/min.)	60
Max. flow in CF line	(l/min.)	40
Max. pressure in P line	(bar)	315
Max. pressure in EF line	(bar)	315
Max. pressure in CF line	(bar)	250
Fluid viscosity range	(cSt)	2.8 - 380
Fluid temperature range	(°C)	-20 +80
Mass	(kg)	0.210
Hydraulic fluid; mineral oil HM and HV ISO 6074		
Recommended filtration; 19/15 ISO 4466 (25 μ absolutes)		
Standard seals in Polyurethane and Buna N		

**Connections:**

- P = Pump
- CF = Priority flow (power steering)
- EF = Excedent flow (auxiliary)
- LS = Load sensing

**Dimensions**

**Ordering informations**
**LSV 30B/M-D04**

LSV 30B = Valve type



Standard springs

Type Setting

**M** = 10 bar

LS port

**B05** = G 1/4

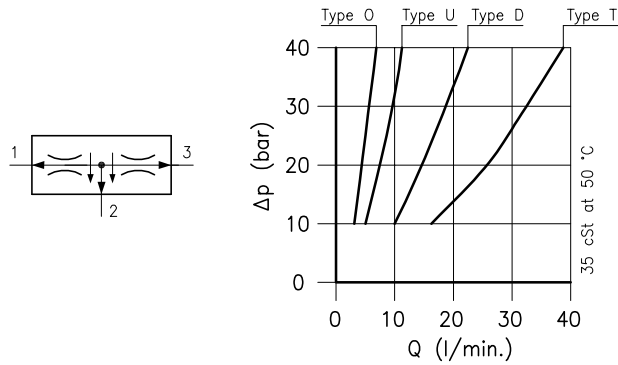
**D04** = M 12x1.5

**Codes:**

LSV 30B/M-B05	33 011 157
LSV 30B/M-D04	33 011 145
External seals kit	90 620 105

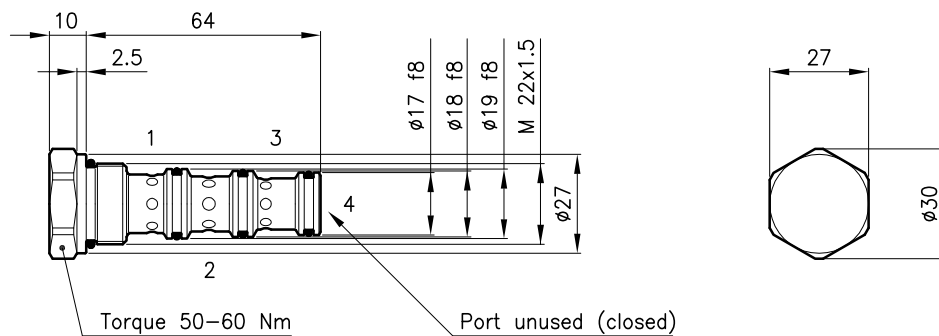
LSV 30B valves can be assembled on standard bodies 30-CC series; for dimensions see catalogue 16.011

**Technical features**



Cavity	(For dimensions see catalogue 17.000)	S 30/4
Inlet flow range	(l/min.)	
	type O	3 – 7
	type U	5 – 12
	type D	10 – 24
	type T	18 – 40
Max. pressure	(bar)	210
Fluid viscosity range	(cSt)	2.8 – 380
Fluid temperature range	(°C)	-20 +80
Mass	(kg)	0.180
Max. accuracy from 10 to 210 bar		5%
Standard flow division	(%)	50/50
Hydraulic fluid; mineral oil HM and HV	ISO 6074	
Recommended filtration; 19/15 ISO 4466	(25 μ absolutes)	
Standard seals in Polyurethane and Buna N		

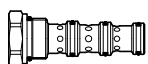
**Dimensions**



**Ordering informations**

**DCC 30/D**

DCC 30 = Valve type



Inlet flow range

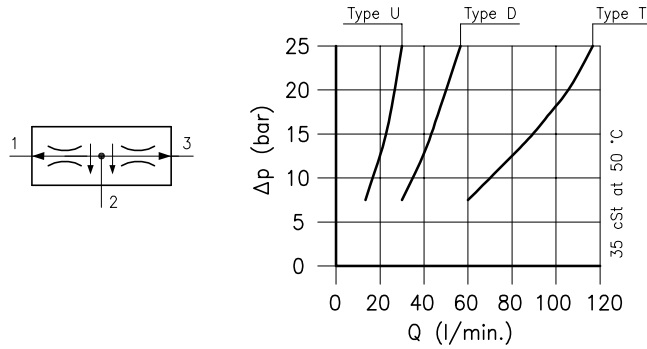
- O** = 3 – 7 l/min
- U** = 5 – 12 l/min
- D** = 10 – 24 l/min
- T** = 18 – 40 l/min

Codes:

DCC 30/O	33 011 101
DCC 30/U	33 011 102
DCC 30/D	33 011 103
DCC 30/T	33 011 104
External seals kit	90 620 105

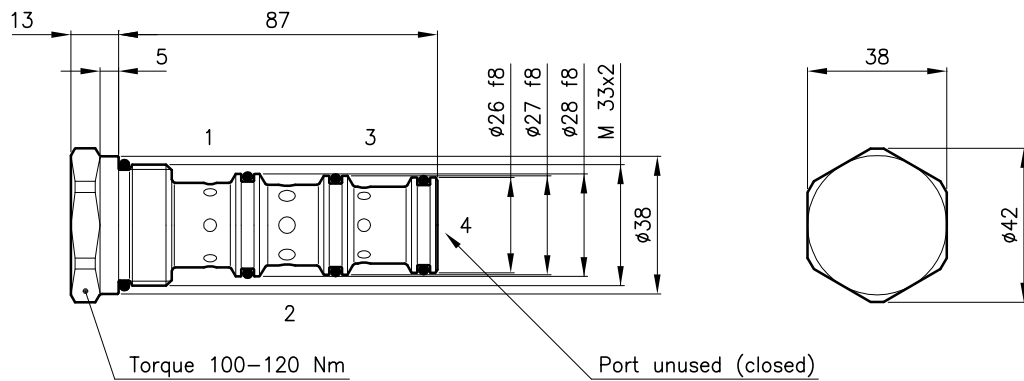
DCC 30 valves can be assembled on standard bodies 30-CC series; for dimensions see catalogue 16.011

**Technical features**



Cavity	(For dimensions see catalogue 17.000)	S 50/4
Inlet flow range (l/min.)	type U	15 – 30
	type D	30 – 60
	type T	60 – 120
Max. pressure	(bar)	210
Fluid viscosity range	(cSt)	2.8 – 380
Fluid temperature range	(°C)	-20 +80
Mass	(kg)	0.510
Max. accuracy from 10 to 210 bar		5%
Standard flow division	(%)	50/50
Hydraulic fluid; mineral oil HM and HV		ISO 6074
Recommended filtration; 19/15 ISO 4466 (25 μ absolutes)		
Standard seals in Polyurethane and Buna N		

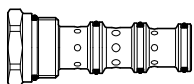
**Dimensions**



**Ordering informations**

**DCC 50/D**

DCC 50 = Valve type



Inlet flow range

**U** = 15 – 30 l/min

**D** = 30 – 60 l/min

**T** = 60 – 120 l/min

Codes:

DCC 50/U 53 011 108

DCC 50/D 53 011 109

DCC 50/T 53 011 110

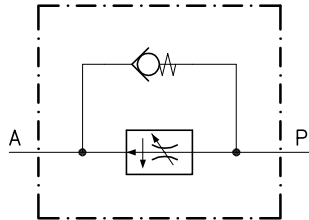
External seals kit 90 620 108

DCC 50 valves can be assembled on standard bodies 50-CC series; for dimensions see catalogue 16.011



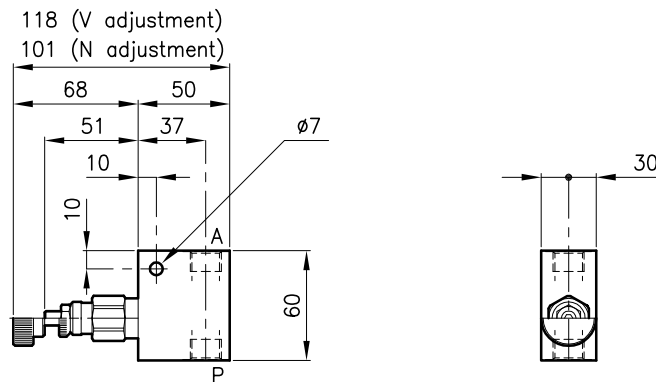
**Technical features**

The main valve are used as pressure compensated flow control and the they keep flow adjusted uniform independtly from the pressure.  
The annexed by-pass valve allows the reverse free-flow.



Valves	(For features see catalogue 06.050)	RDC 20
	(For features see catalogue 05.005)	CB 20
Flow setting range 10% (l/min.)	type U	0.6 - 2.2
	type D	1.5 - 4.5
	type T	3.2 - 9.5
	type Q	6 - 18
Max. pressure	(bar)	315
Fluid viscosity range	(cSt)	2.8 - 380
Fluid temperature range	(°C)	-20 +80
Mass	(kg)	0.400
Hydraulic fluid; mineral oil HM and HV		ISO 6074
Recommended filtration; 19/15 ISO 4466 (25 μ absolutes)		
Standard seals in Polyurethane and Buna N		

**Dimensions**



**Ordering informations**

**RDC 20/D-N-CSL 10-B06**

Valve type

Flow setting range

**U** = 0.6 - 2.2 l/min

**D** = 1.5 - 4.5 l/min

**T** = 3.2 - 9.5 l/min

**Q** = 6 - 18 l/min

Adjustment type

**N** = Standard adjustment

**V** = Handknob adjustment

Version

Standard ports

**B06** = G 3/8 ISO 228

Codes:

RDC 20/U-N-CSL 10-B06 23 011 129

RDC 20/D-N-CSL 10-B06 23 011 130

RDC 20/T-N-CSL 10-B06 23 011 131

RDC 20/Q-N-CSL 10-B06 23 011 132

RDC 20/U-V-CSL 10-B06 23 011 133

RDC 20/D-V-CSL 10-B06 23 011 134

RDC 20/T-V-CSL 10-B06 23 011 135

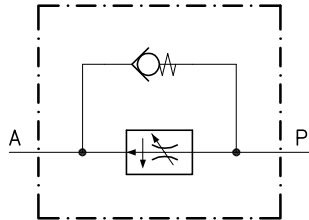
RDC 20/Q-V-CSL 10-B06 23 011 136

Only body code:

Body type 20-CSL 10-B06 28 144 116

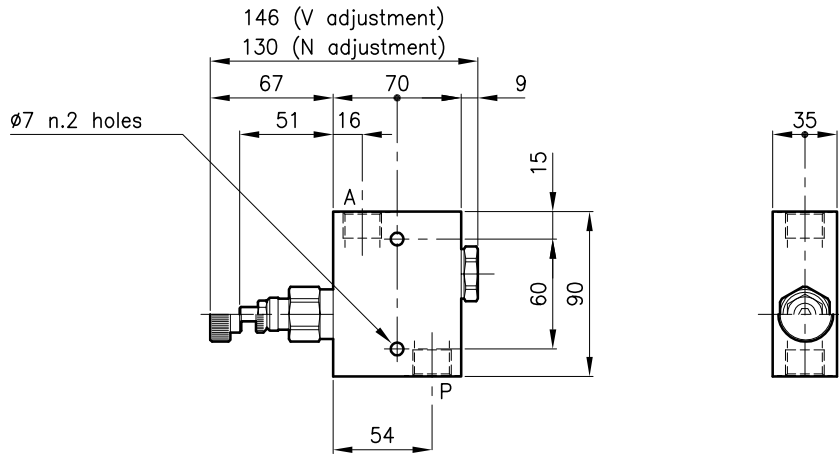
**Technical features**

The main valve are used as pressure compensated flow control and the they keep flow adjusted uniform independently from the pressure.  
The annexed by-pass valve allows the reverse free-flow.



Valves	(For features see catalogue 06.060)	RDC 30
	(For features see catalogue 05.060)	CAE 30/P
Flow setting range 10% (l/min.)	type U	3 - 6
	type D	6 - 11
	type T	13 - 25
	type Q	25 - 45
Max. pressure	(bar)	315
Fluid viscosity range	(cSt)	2.8 - 380
Fluid temperature range	(°C)	-20 +80
Mass	(kg)	0.980
Hydraulic fluid; mineral oil HM and HV		ISO 6074
Recommended filtration; 19/15 ISO 4466 (25 μ absolutes)		
Standard seals in Polyurethane and Buna N		

**Dimensions**



**Ordering informations**

**RDC 30/D-N-CSL 10-B08**

Valve type

Flow setting range

**U** = 3 - 6 l/min

**D** = 6 - 11 l/min

**T** = 13 - 25 l/min

**Q** = 25 - 45 l/min

Adjustment type

**N** = Standard adjustment

**V** = Handknob adjustment

Version

Standard ports

**B06** = G 3/8 ISO 228

**B08** = G 1/2 ISO 228

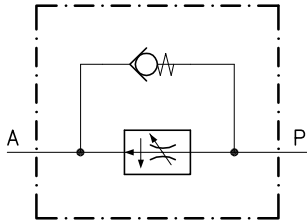
Only body codes:

Body type 30-CSL 10-B06 38 144 127

Body type 30-CSL 10-B08 38 144 128

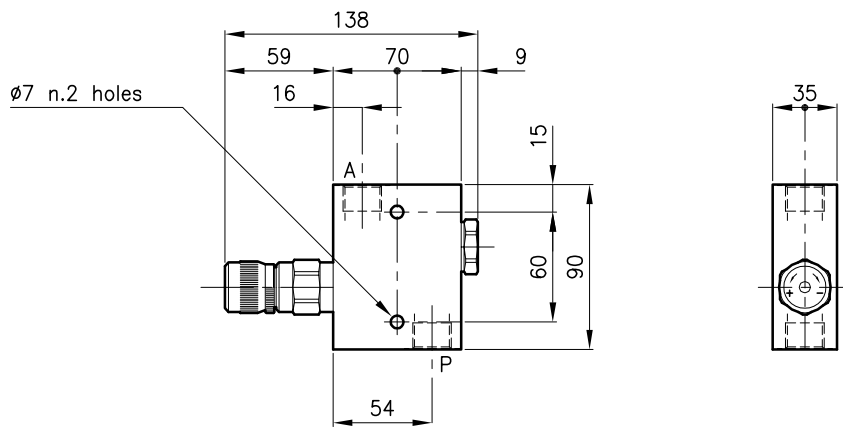
**Technical features**

The main valve are used as pressure compensated flow control and the they keep flow adjusted uniform independently from the pressure.  
The annexed by-pass valve allows the reverse free-flow.



Valves	(For features see catalogue 06.070)	RDZ 30
	(For features see catalogue 05.060)	CAE 30/P
Flow setting range (l/min.)	type D	0.05 - 12
	type Q	0.05 - 24
Max. pressure	(bar)	315
Min. pressure difference	(bar)	7
Fluid viscosity range	(cSt)	2.8 - 380
Fluid temperature range	(°C)	-20 +80
Mass	(kg)	0.960
Hydraulic fluid; mineral oil HM and HV		ISO 6074
Recommended filtration; 19/15 ISO 4466 (25 μ absolutes)		
Complete adjustment range obtained with 1 knob turn		
Standard seals in Polyurethane and Buna N		

**Dimensions**



**Ordering informations**

**RDZ 30/D-H-CSL 10-B08**

Valve type

Flow setting range

**D** = 0.05 - 12 l/min

**Q** = 0.05 - 24 l/min

Adjustment type

**H** = Standard

**HG** = With climping lock ring

Version

Standard ports

**B06** = G 3/8 ISO 228

**B08** = G 1/2 ISO 228

Codes:

RDZ 30/D-H-CSL 10-B06 33 011 149

RDZ 30/Q-H-CSL 10-B06 33 011 150

RDZ 30/D-HG-CSL 10-B06 33 011 151

RDZ 30/Q-HG-CSL 10-B06 33 011 152

RDZ 30/D-H-CSL 10-B08 33 011 153

RDZ 30/Q-H-CSL 10-B08 33 011 154

RDZ 30/D-HG-CSL 10-B08 33 011 155

RDZ 30/Q-HG-CSL 10-B08 33 011 156

Only body codes:

Body type 30-CSL 10-B06 38 144 127

Body type 30-CSL 10-B08 38 144 128