

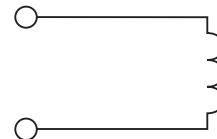
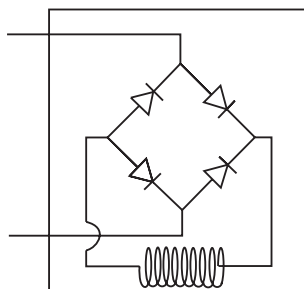
## Features

- Integral Deutsch connector coil exceeds IP69K standards
- Integral Deutsch connector coil thermal shock dunk test rated
- Universal 50/60 Hz operation
- Waterproof coil hermetically sealed, requires no O-rings or waterproofing kits
- External plated steel flux-carrying band (unlike encapsulated band) enables coil to withstand severe thermal shocks without cracking
- Symmetrical coil can be reversed without affecting performance

## Specifications

<b>Coil Type</b>	<b>S</b> Standard <b>P</b> Puissant
<b>Nominal Wattage</b> (See Ordering Information For Exact Wattage)	<b>S</b> 14 Watts <b>P</b> 19 Watts
<b>Duty Cycle</b>	Continuous @ 100% voltage
<b>Magnetic Wire Insulation Class</b>	'N' Rated at 200°C (392°F)
<b>Temperature Range</b>	-40°C to +200°C (-40°F to +392°F)
<b>Temperature Rise At Nominal Voltage And Natural Ventilation</b>	<b>S</b> 75°C (135°F) <b>P</b> 95°C (172°F)
<b>Dielectric Strength Maximum Current Leakage (Amps)</b>	.0005 In dry lab condition at 1000V AC for 30 seconds .001 After being immersed in 23°C (77°F) water with waterproof connector for 24 hours at 500V AC
<b>Encapsulating Material</b>	Glass filled rynite
<b>Color Identification On The Terminal Boss</b>	<b>S</b> Black Ring <b>P</b> Red Ring
<b>Weight</b>	0.20 kg (0.44 lbs.)

## AC Coil Assembly



## Ordering Information

<b>CC</b>			
Super Coil 1/2" I.D.	Wattage	Voltage	Termination
<b>Code</b>	<b>Wattage</b>		
<b>S</b>	Standard		
<b>P</b>	Puissant		

Code	Voltage	Watts		Amps		Ohms**	
		S	P	S	P	S	P
012*	12 VDC	14	19	1.15	1.58	10.43	7.58
024*	24 VDC	14	19	0.58	0.79	41.74	30.30
115*	115 VAC	16	19	0.17	0.20	680	576

\*Standard Voltages

\*\*Resistance  $\pm 10\%$  at 68°F

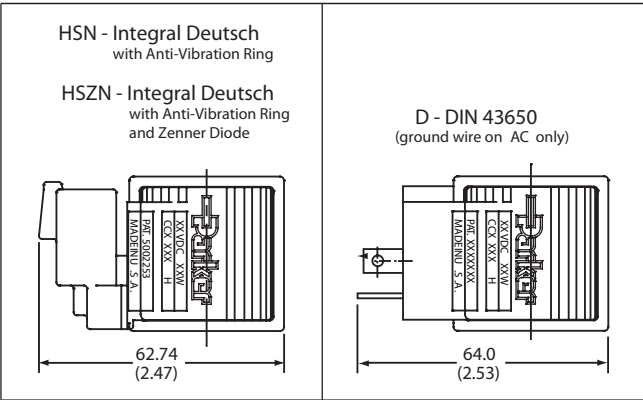
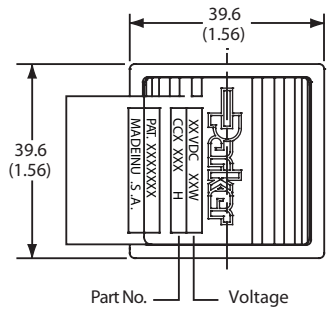
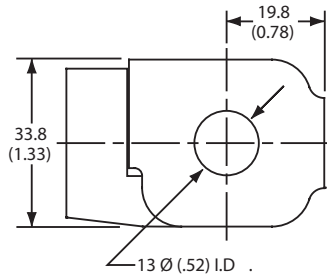
Code	Termination
*D	DIN 43650 (AC or DC, Supplied without DIN Connector)
*HSN	Integral Deutsch with Anti-vibration ring (DC Only)
*HSZN	Integral Deutsch with Anti-vibration ring and Zener Diode (DC Only) *Zener Diode for use with on/off solenoid valves and not recommended for proportional valves.

### \*UL Listed

**Note:** Additional voltages and other terminals may be available. For details please consult factory.

DIN Female Mating Connector: See page CE3  
 Deutsch Mating Connector: # DT06-2S

Terminal Styles and Dimensions



NOTES:

1. The standard A.C. coil includes a molded-in full wave rectifier rated for 800 peak reverse voltage.
2. All P Puissant (high wattage) coils use a red ring as an indication marker on the terminal boss.

**718164 - Wire connector assembly with 36" leads for Super Coils with Integral Deutsch connectors.**



CV
Check Valves
SH
Shuttle Valves
LM
Load/Motor Controls
FC
Flow Controls
PC
Pressure Controls
LE
Logic Elements
DC
Directional Controls
SV
Solenoid Valves
PV
Proportional Valves
CE
Coils & Electronics
BC
Bodies & Cavities
TD
Technical Data