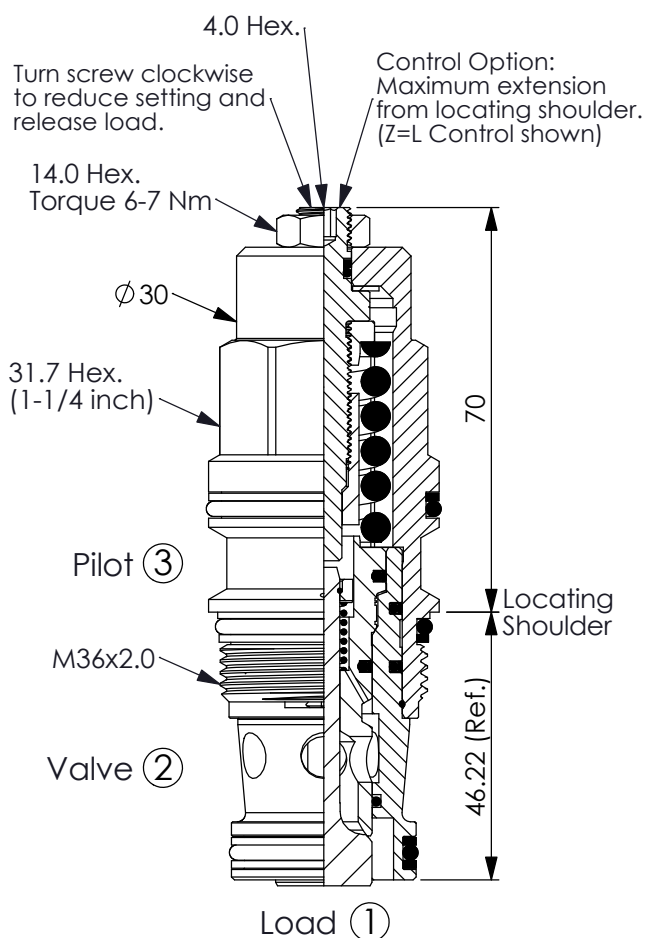
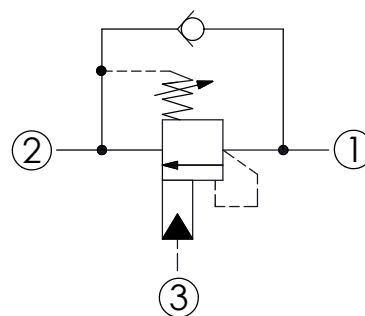


COUNTERBALANCE VALVE

Ordering Code: **CB-17A-X-Y-Z**



UNIT:mm

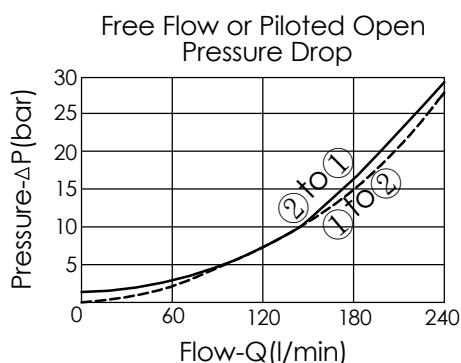


TECHNICAL DATA

Max. Setting:	280	bar
Rated flow:	240	l/min
Cavity-Tooling:	17A-3	
Installation torque:	200-215	Nm
Weight:	0.60 (Z=L)	kg

Pressure Setting:

Setting should be 1.3 times maximum load induced pressure.
(We suggest when the Max. setting pressure is 280 bar, the load pressure has to be lower than 215 bar.)



X PILOT RATIO

3A	1.5 : 1 (with sealed pilot)
3C	3 : 1 (with sealed pilot)
3Q	2 : 1 (with bleed through pilot)

Y

SPRINGS

ADJUSTMENT RANGES(1.7 bar Cracking Pressure)

H 70-280 bar (210 bar Standard Setting)

I 25-105 bar (70 bar Standard Setting)

M 16-55 bar (25 bar Standard Setting)

SPECIAL PURPOSES(0.3 bar Cracking Pressure)

A 70-280 bar (210 bar Standard Setting)

B 25-105 bar (70 bar Standard Setting)

E 16-55 bar (25 bar Standard Setting)

Z

OPTIONS

L

Leakproof hex. socket screw.



LP

Leakproof hex. socket screw.
With stainless steel external metal components



C

Stainless Steel Tamper Resistant Cover.

