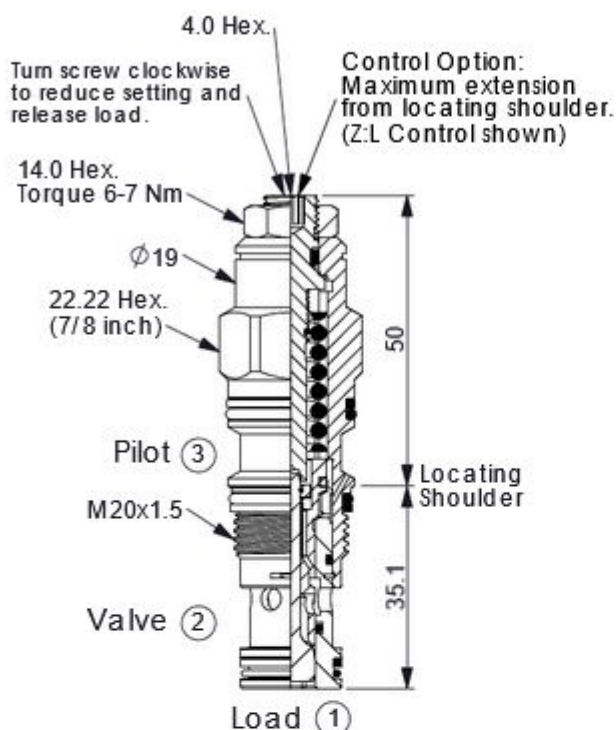
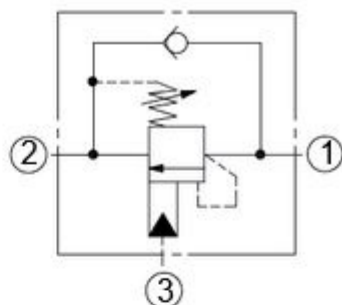
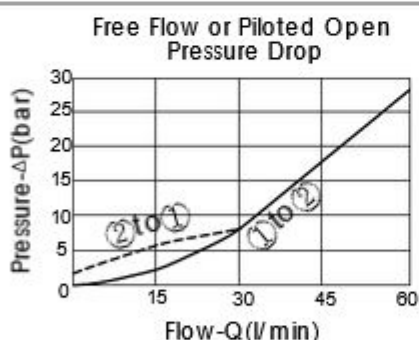


## COUNTERBALANCE VALVE

Ordering Code: CB-11A-X-Y-Z



UNIT:mm



### TECHNICAL DATA

Max. Setting:	350	bar
Rated flow:	60	l/min
Cavity-Tooling:	11A-3	
Installation torque:	40-50	Nm
Weight:	0.16 (Z=L,LP)	kg

**Pressure Setting:**  
Setting should be 1.3 times maximum load induced pressure.  
(We suggest when the Max. setting pressure is 350 bar, the load pressure has to be lower than 270 bar.)

X	PILOT RATIO
30	10 : 1
33	3 : 1 (Only Y=J and Y=C)
34	4.5 : 1
3B	2.3 : 1 (with sealed pilot)
3D	4.5 : 1 (with sealed pilot)
3J	10 : 1 (with sealed pilot)
3P	16 : 1 (with sealed pilot)

Y	SPRINGS
	ADJUSTMENT RANGES(2 bar Cracking Pressure)
J	140-350 bar (210 bar Standard Setting)
K	70-175 bar (140 bar Standard Setting)
	SPECIAL PURPOSES(0.3 bar Cracking Pressure)
C	140-350 bar (210 bar Standard Setting)
D	70-175 bar (140 bar Standard Setting)

Z	OPTIONS
L	Leakproof hex. socket screw.
LP	Leakproof hex. socket screw. With stainless steel external metal components
C	Stainless Steel Tamper Resistant Cover.