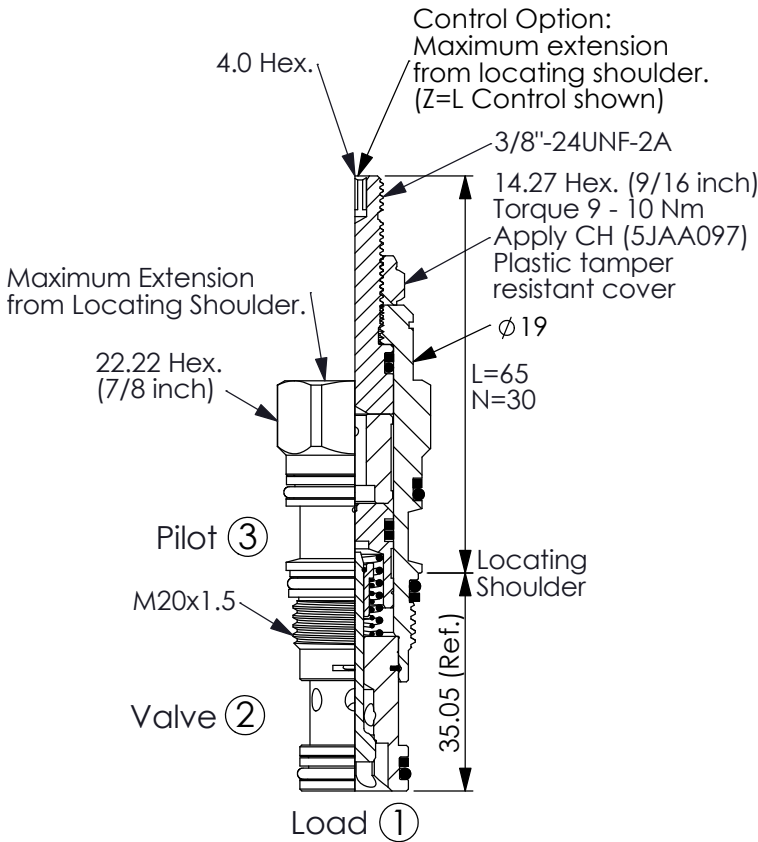
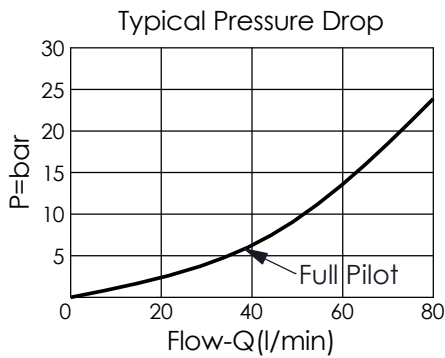


Ordering Code: **CO-11A-X-Y-Z**

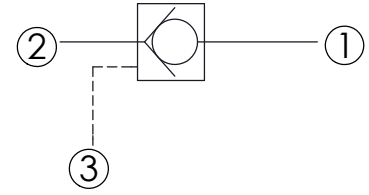


UNIT:mm

Illustrations / detail are  
for reference only.  
Data subject to change.



Y	SPRINGS	
	Cracking pressure	
007	0.07 bar	
03	0.3 bar	
10	1.0 bar	
20	2.0 bar	
35	3.5 bar	
50	5.0 bar	
70	7.0 bar	



### TECHNICAL DATA

Max. Operating pressure:	350 bar
Rated flow:	60 l/min
Cavity-Tooling:	11A-3
Installation torque:	40 - 50 Nm
Weight:	0.127 (Z=N) kg

### X OPERATION

30	② to ① (Free Flow) Pilot Ratio 3:1	
3C	② to ① (Free Flow) Sealed Pilot Piston Pilot Ratio 3:1	
3D	② to ① (Free Flow) Sealed Pilot Piston Pilot Ratio 4.2:1	
3E	② to ① (Free Flow) Sealed Pilot Piston Pilot Ratio 5:1	

### Z OPTION

N	Non-adjustable		
NP	Non-adjustable With stainless steel external metal components (Buna-N Seal)		
L	Leakproof hex. socket screw.		
K	Handknob with Lock Knob. (Order Code: 6ZAK001)		