

TO ALL OUR CUSTOMERS

Att. of  
Technical Department Manager

Poviglio, September 2011

**Subject: Spare parts availability for Scanreco Rc400 radio remote controls of first generation (G1)**

Dear Customer,

this communication is to inform you that, from the current month, Scanreco AB ceases the distribution of some spare parts because out of production. Old parts will be available until out of stock.

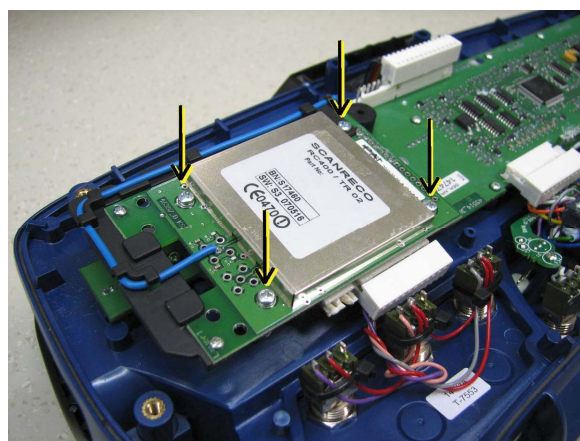
<b>Discontinued part</b>	<b>Description of the complementary part</b>
Radio receiver <b>type 344</b>	works with radio module type 380 (inside transmitter)
Radio module <b>type 380</b> (inside transmitter)	works with radio receiver type 344
Radio receiver <b>type 509</b>	works with radio module type 507 (inside transmitter)
Radio module <b>type 507</b> (inside transmitter)	works with radio receiver type 509

In case of replacement of one of the four codes above you must also replace the complementary part, as summarized in the following table:

<b>Part to be replaced</b>	<b>Action to do</b>
Module type 380	Replace with module type 570 / 515 and replace also the receiver with type 1500
Receiver type 344	Replace the receiver type 1500 and replace also the module with type 570 / 515
Module type 507	Replace with module type 568 / 514 and replace also the receiver with type 1500
Receiver type 509	Replace the receiver type 1500 and replace also the module with type 568 / 514

To replace the radio module you must:

- remove the black bottom part of the transmitter to access the cards;
- remove the 4 screws marked with arrows in the picture and replace the radio module;
- close the transmitter mounting back the black bottom part;
- if needed, replace the receiver with the type compatible with the radio module just installed.



Our technical department is available for any further information.

Best regards.

Guido Campanini  
Technical department manager FABER-COM s.r.l.  
[gc@fabercom.it](mailto:gc@fabercom.it)