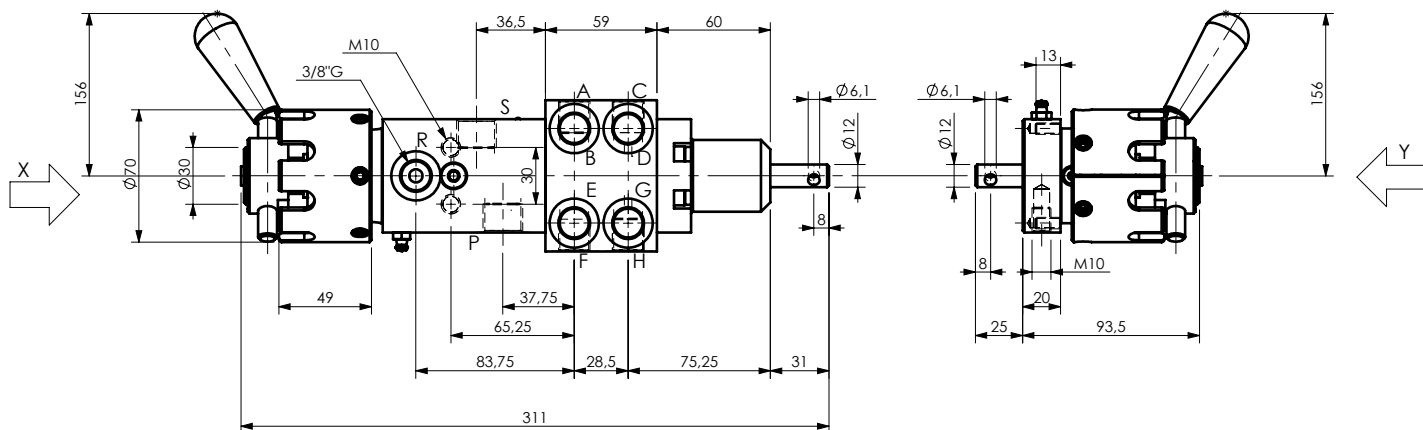
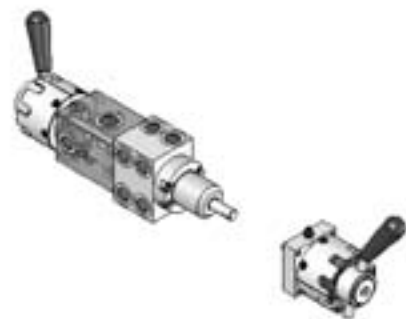
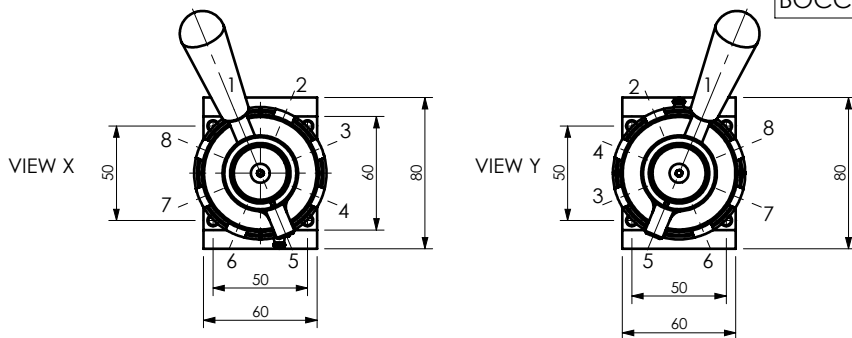


POS.	1	2	3	4	5	6	7	8
BOCCA/PORT	A	B	C	D	E	F	G	H

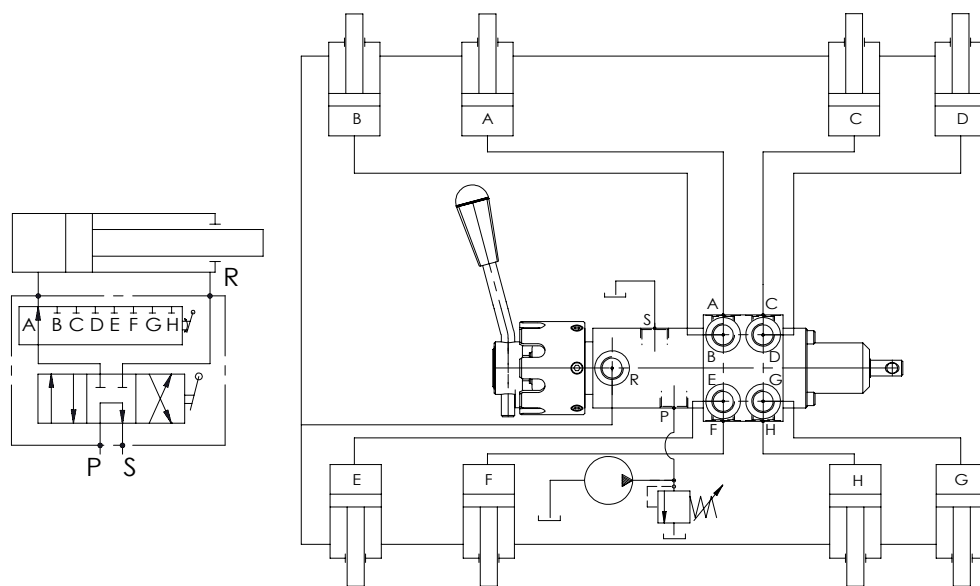


**SCHEMA DI MONTAGGIO / ASSEMBLY GUIDE**

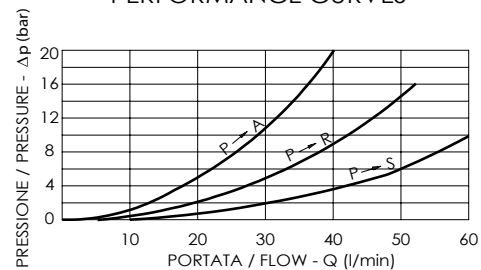
**DESCRIZIONE/DESIGN**

Distributore doppio effetto rotativo monoleva a 9 vie e 8 posizioni di lavoro. Predisposto per doppio comando.

Double-acting rotative distributor with one lever, nine-way, eight working positions. Fitted for both sides use.



**CURVE CARATTERISTICHE/ PERFORMANCE CURVES**



ATTACCHI/PORT SIZE	
A-B-C-D-E-F-G-H	S-P
3/8"G	1/2"G

CODICE DI ORDINAZIONE ORDERING CODE		UTILIZZATORI ABILITATI X WORKING PORT X								UTILIZZATORI ABILITATI Y WORKING PORT Y								CAMPO DI PORTATA (l/min) FLOW RANGE (l/min)	PRESSIONE MAX (bar) MAX PRESSURE (bar)	PESO Kg WEIGHT Kg
DEVIATORE DIVERTER	RINVIO DUAL CONTROL	1	2	3	4	5	6	7	8	1	2	3	4	5	6	7	8			
A150308.51.00	A160000.51.00	A	B	C	D	E	F	G	H	A	B	C	D	E	F	G	H	5-45	300	5.4
A150308.52.00	A160000.52.00	A	B	C	-	-	-	-	H	-	-	-	D	E	F	G	-	5-45	300	5.4
A150308.54.00	A160000.54.00	A	-	C	D	-	F	G	H	A	B	-	-	E	F	G	H	5-45	300	5.4