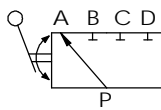
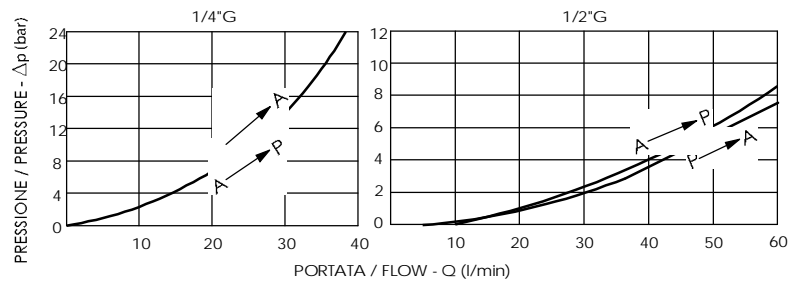


65	59	6	19	15	12	35	45	29.5	9	50	24.5	35	35	17.5	102.5	ø10	ø15.5	ø4	M10	1/4"G	0.6 Kg
108	80	28	22	--	15	50	50	40	8	60	--	60	30	30	107.5	--	ø14.5	ø4	M10	1/2"G	2.3 Kg
L	L1	L2	L3	L4	L5	L6	L7	L8	L9	L10	L11	H	H1	H2	H3	D	D1	D2	X	Y	PESO/WEIGHT

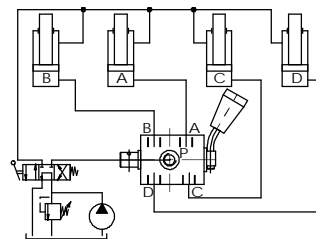
CURVE CARATTERISTICHE / PERFORMANCE CURVES



1	APERTO/OPEN P → A	5	APERTO/OPEN P → C
2	CHIUSO/CLOSED	6	CHIUSO/CLOSED
3	APERTO/OPEN P → B	7	APERTO/OPEN P → D
4	CHIUSO/CLOSED	8	CHIUSO/CLOSED



SCHEMA DI MONTAGGIO / ASSEMBLY GUIDE



DESCRIZIONE/DESIGN

Deviatore rotativo ad 8 posizioni a 5 vie con 4 posizioni di lavoro e 4 di tenuta.

5-way,8 position diverter with four working position and four neutral position.

CODICE ORDINAZIONE ORDERING CODE	CAMPO DI PORTATA (l/min) FLOW RANGW (l/min)	PRESSIONE MAX (bar) MAX PRESSURE (bar)	Y
A150201.01.00	1-40	700	1/4"G
A150401.03.00	20-70	700	1/2"G