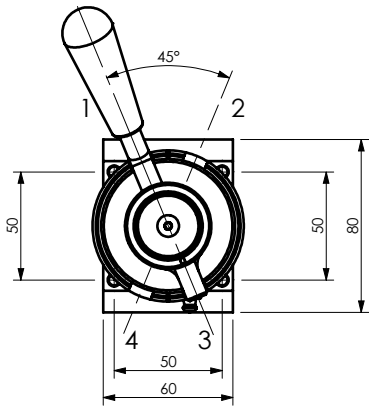
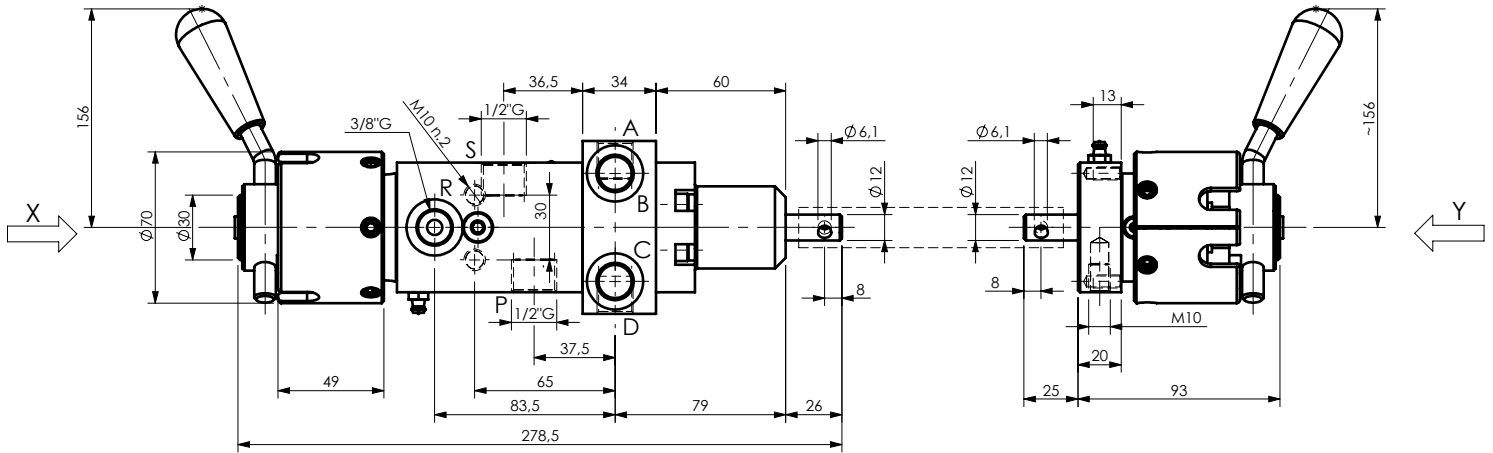
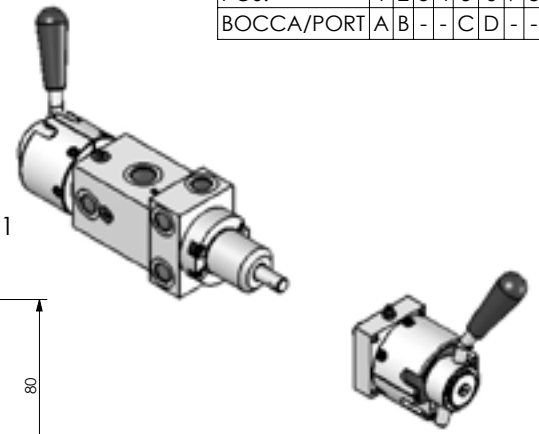
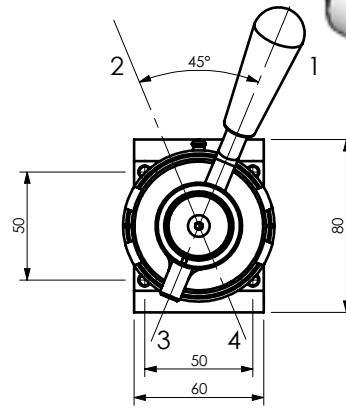


POS.	1	2	3	4	5	6	7	8
BOCCA/PORT	A	B	-	C	D	-	-	-

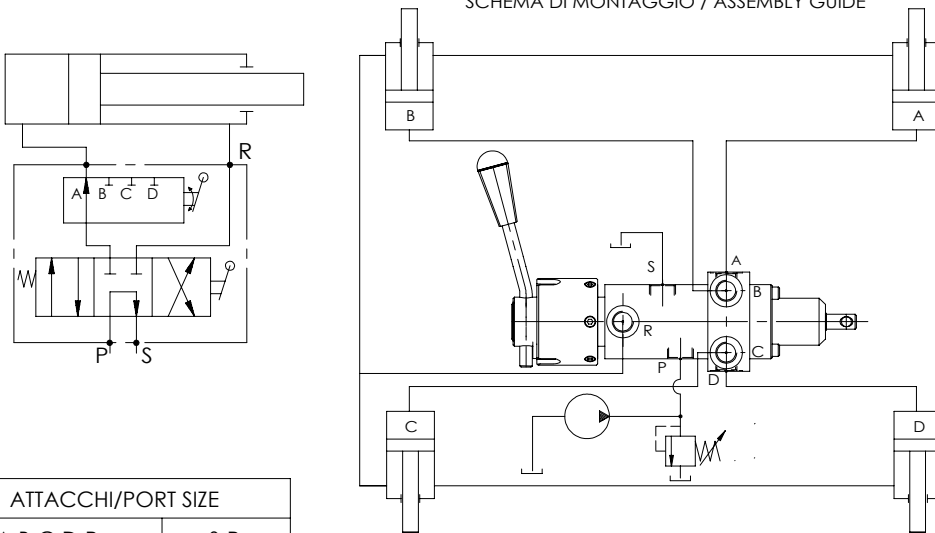
VIEW X



VIEW Y



SCHEMA DI MONTAGGIO / ASSEMBLY GUIDE

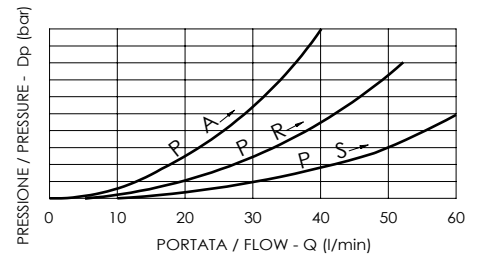


DESCRIZIONE/ DESIGN

Distributore doppio effetto rotativo monoleva a 5 vie con 4 posizioni di lavoro e 4 posizioni di arresto. Predisposto per doppio comando.

Double-acting rotative distributor with one lever, five-way, four working positions and four at rest. Fitted for both sides use.

CURVE CARATTERISTICHE / PERFORMANCE CURVES



ATTACCHI/PORT SIZE	
A-B-C-D-R	S-P
3/8"G	1/2"G

CODICE DI ORDINAZIONE ORDERING CODE		UTILIZZATORI ABILITATI X WORKING PORT X				UTILIZZATORI ABILITATI Y WORKING PORT Y				CAMPO DI PORTATA (l/min) FLOW RANGE (l/min)	PRESSIONE MAX (bar) MAX PRESSURE (bar)	PESO Kg WEIGHT Kg
DEVIATORE DIVERTER	RINVIO DUAL CONTROL	1	2	3	4	1	2	3	4			
A150307.51.00	A160000.51.00	A	B	C	D	A	B	C	D	5-45	200	4.5
A150307.52.00	A160000.52.00	A	B	-	-	-	-	C	D	5-45	200	4.5