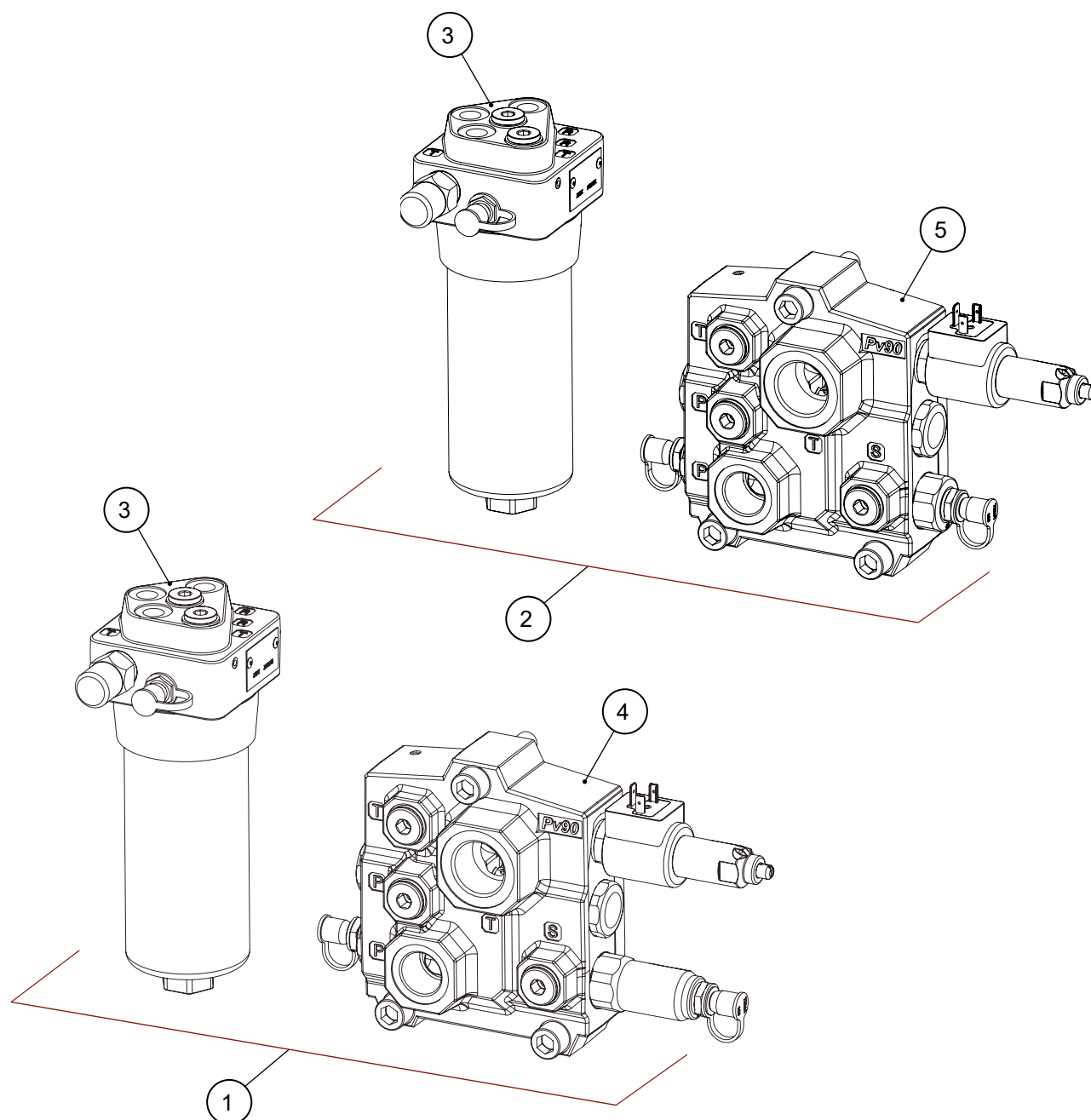


## Valve Pv90: Inlet section, replacement kit V2360 and V2361

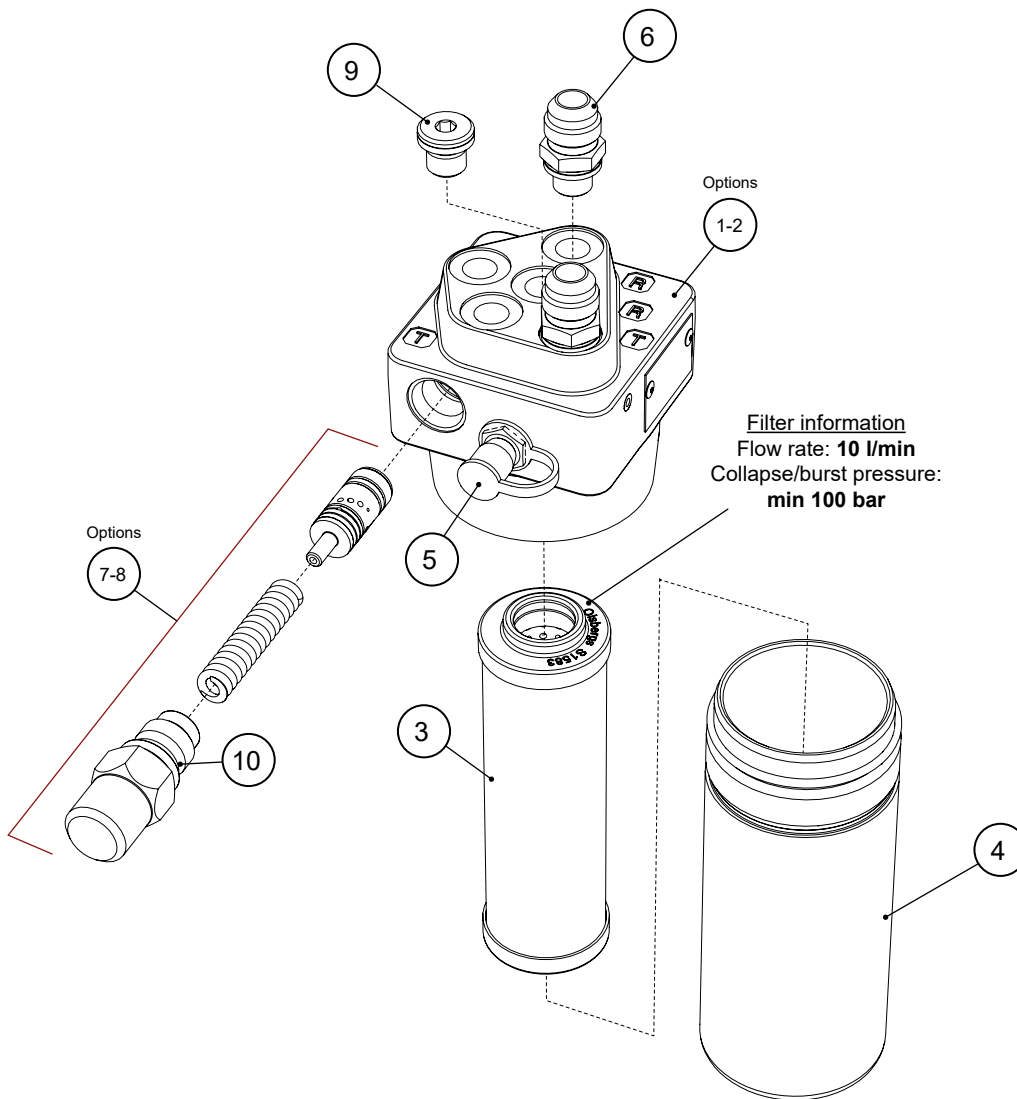
Spare parts



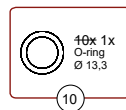
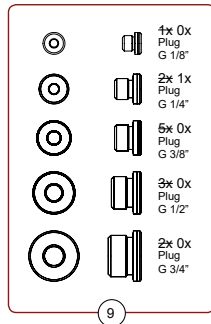
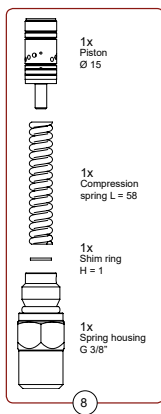
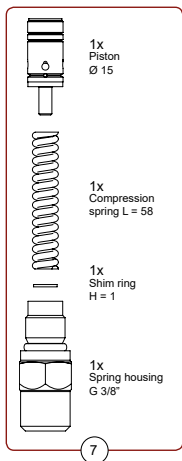
Pos.	Part no.	Description	Note
1	V2360	Kit Inlet section F13 Pv90 + PRF	Replaces inlet section V0730 and V0738
2	V2361	Kit inlet section V50 Pv90 + PRF	Replaces inlet section V0732, V0735, V0736 and V0737
3	0580	Pressure reducer/filter PRF, complete	See page 30
4	V2160	Inlet section F Pv90, complete	See page 7
5	V2161	Inlet section V Pv90, complete	See page 8

# Pressure reducer/filter PRF

## Spare parts



**Filter information**  
 Flow rate: **10 l/min**  
 Collapse/burst pressure:  
**min 100 bar**



**Note:**  
**V9041** fits PRF with serial number up to: 21871  
**V9040** fits PRF with serial number to: 21871

\*\* = some parts of the kit is not needed

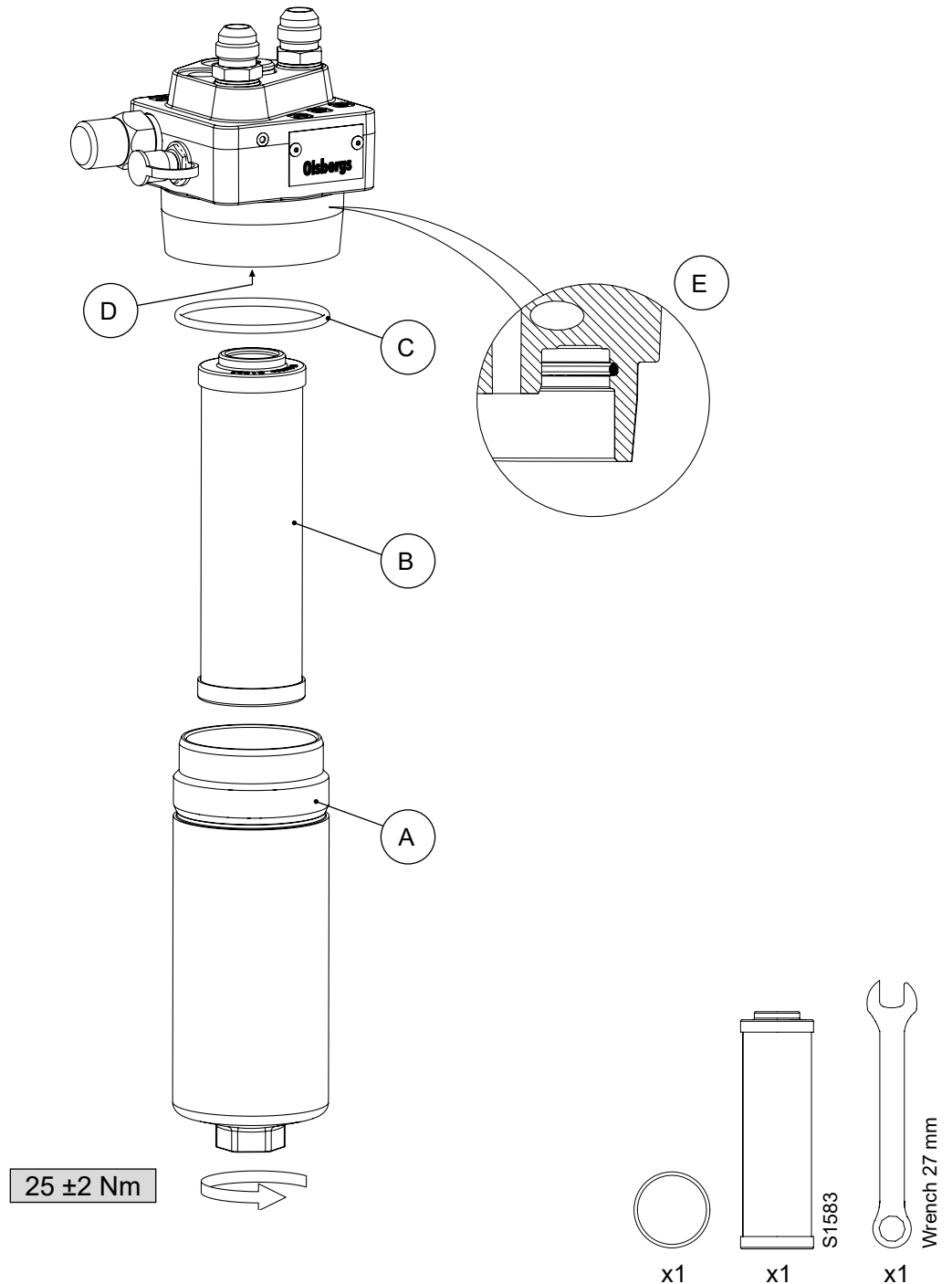
Pos.	Part no.	Description	Note
1	0480	Pressure reducer/filter PRF, complete	(2.2-2.5 MPa)
2	0580	Pressure reducer/filter PRF, complete	(2.7-3.0 MPa)
3	S1583	Filter cartridge 10my absolute	Incl. o-ring
4	P0204	Filter housing PRF, complete	Incl. o-ring
5	S2250	Measuring nipple G 1/8"	TEMA system 100
6	S1828	Nipple G 1/4" Jic 3/4"	
7	V9041	Piston kit PRF T1	Consumption: 1 kit per PRF unit
8	V9040	Piston kit PRF T2	Consumption: 1 kit per PRF unit
9	V9027	Plug kit PG2	Consumption: 1 kit per PRF unit**
10	V9022	Sealing package TE2	Consumption: 1 pcs per PRF unit**

## Instructions - Pressure reducer / filter PRF

### Replacement of filter cartridge, article no. S1583

**To prevent dirt from entering the unit.**

Do not unpack the filter cartridge until you are ready to mount it.



#### Instructions

1. Carefully clean the filter cover (A) and the area (D) on the housing.
2. Remove the filter cover (A) using a 27 mm wrench.
3. Remove the old filter cartridge.
4. Remove the old O-ring (C) (E) and replace it with the supplied one (oil it before assembly).
5. Add new grease to the threads of the filter cover. (A)
6. Unpack the new filter cartridge (art.S1583), make sure it's clean and mount it.
7. Remount the filter cover and tighten it, torque 25 ± 2 Nm.