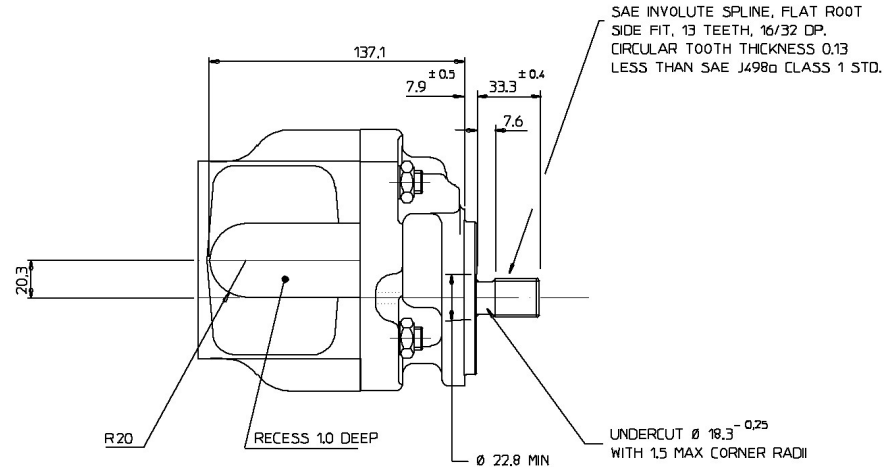



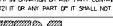
PUMP DATA	
PUMP TYPE	2PR037
THEORETICAL DISPLACEMENT	37.0 cc/rev (2.26 cu in/rev)
MAXIMUM CONTINUOUS PRESSURE P1	275 bar (3988 psi)
MAXIMUM SPEED AT PRESSURE P1	3000 rev/min
MINIMUM SPEED AT PRESSURE P1	500 rev/min
ROTATION WHEN VIEWED ON END OF DRIVESHAFT	CLOCKWISE
APPROX WEIGHT	kg (lb)
OPERATING TEMPERATURE RANGE	CONTINUOUS 0°C TO 80°C COLD START -20°C MAX INTERMITTENT 100°C
SHAFT SEAL TYPE	DOUBLE NITRILE



VIEW ON ARROW 'B'

FOR OPERATING CONDITIONS OUTSIDE THOSE STATED PLEASE CONSULT
ULTRA HYDRAULICS LIMITED TECHNICAL SALES DEPARTMENT.
WITH EXCEPTION OF DRIVESHAFT, FLANGE SPIGOT AND MOUNTING FACE, PLUS
AREAS AROUND PORTS, ALL SURFACES ARE PAINTED WITH BLACK SUNCORITE 528.

ISSUED ON	1999-03
ISSUED BY	AM
DATE	1999-03
CHECKED	AM
ENG APP	AM
PROD APP	AM

Part No.	9 3 9 9 E	THIRD ANGLE PROJECTION	
TITLE			
2PR0375B181T4-275-CS1A4E			
UNLESS OTHERWISE STATED ALL DIMENSIONS IN MILLIMETRES / INCHES GENERAL MANUFACTURING STANDARDS TO HDS 200 GEOMETRIC TOLERANCES AND SYMBOLS TO BS 308		<p>© ULTRA HYDRAULICS LTD 1999 THIS DRAWING IS THE PROPERTY OF ULTRA HYDRAULICS LIMITED AND IS CONFIDENTIAL. IT IS ISSUED SUBJECT TO THE CONDITIONS THAT: IT IS NOT TO BE REPRODUCED IN ANY FORM TO A THIRD PARTY. OR IF IN ANY MANNER OF IT SHALL NOT BE REPRODUCED IN ANY FORM.</p>	
		HYDRAULICS LTD. CHELTENHAM	
		SIZE A0	