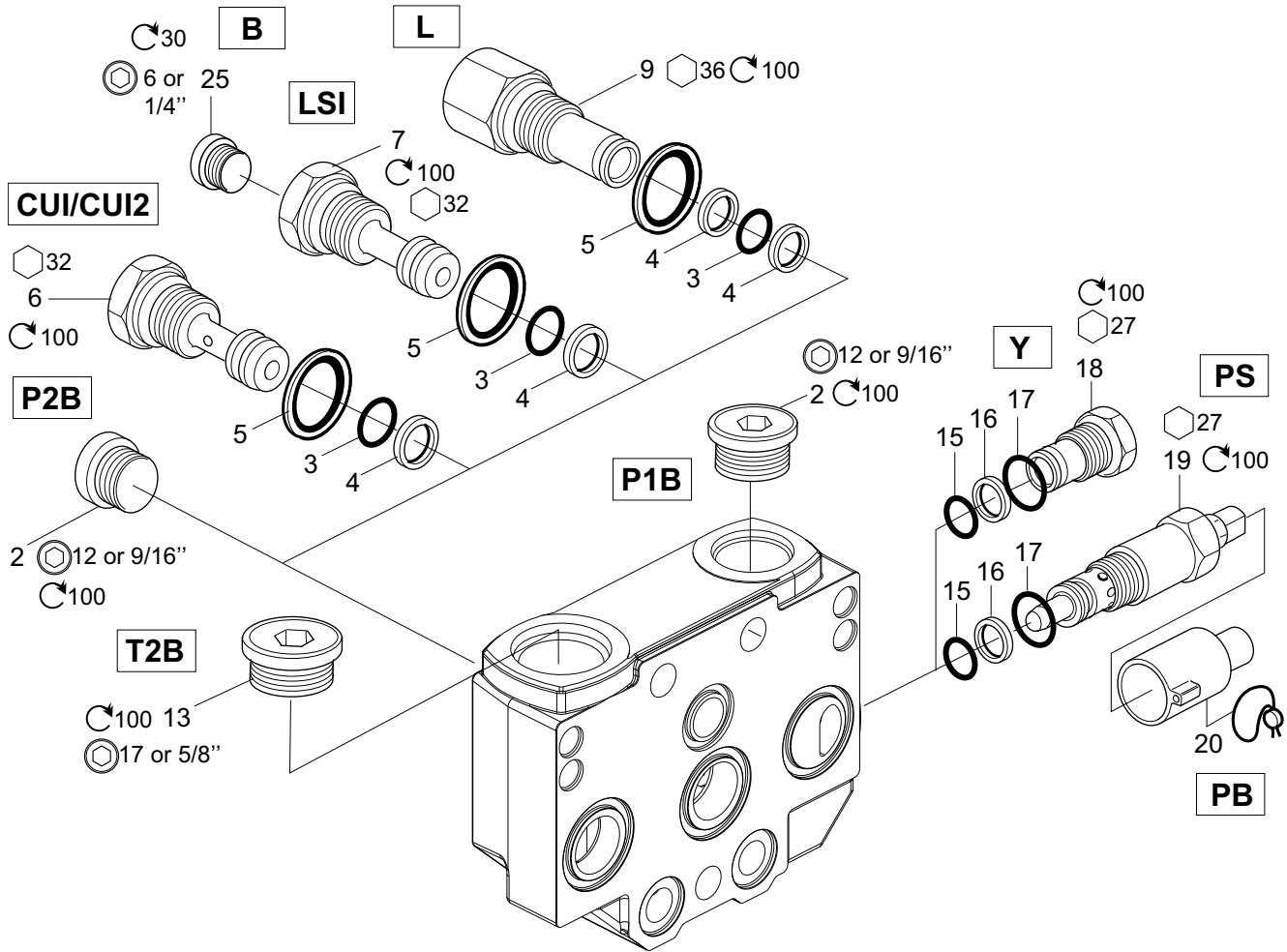


PS, PB, L, B, P1B, P2B, T2B, Y1, CUI, CUI2, LSI



See Customer Specification				
Code	Pos	Part	Description	Remarks / Items
L + G	26 + 04	9121580321	Parallel connection adaptor, BSP	9[3, 4(2x), 5]
L + U	26 + 04	9121580322	Parallel connection adaptor, UNF	9[3, 4(2x), 5]
B + G	26 + 04	301000K029	Blocking adaptor, BSP	7[3, 4, 5], 25
B + U	26 + 04	301000K030	Blocking adaptor, UNF	7[3, 4, 5], 25
LSI + G	25 + 04	9121580323	CP adaptor BSP	7[3, 4, 5]
LSI + U	25 + 04	9121582976	CP adaptor UNF	7[3, 4, 5]
L/LSI/KUI/CUI2/B + G	26 + 04	9120099806	Seal kit, BSP	3, 4(2x), 5
L/LSI/KUI/CUI2/B + U	26 + 04	9120099805	Seal kit, UNF	3, 4(2x), 5
P1B/P2B + G	26, 27 + 04		Plug, VSTI3/4EDCF, BSP	2
P1B/P2B + U	26, 27 + 04		Plug 12 HP5ON-S, UNF	2
T2B + G	25 + 04		Plug, VSTI1EDA3C, BSP	13
T2B + U	25 + 04		Plug 16 HP5ON-S, UNF	13
PS	16	9120099960	Main relief valve, 80 - 125 bar	19[15, 16, 17]
PS	16	9120099961	Main relief valve, 126 - 140 bar	19[15, 16, 17]
PS	16	9120099962	Main relief valve, 141 - 160 bar	19[15, 16, 17]
PS	16	9120099963	Main relief valve, 161 - 210 bar	19[15, 16, 17]
PS	16	9120099964	Main relief valve, 211 - 250 bar	19[15, 16, 17]
PS	16	9120099965	Main relief valve, 251 - 280 bar	19[15, 16, 17]
PS	16	9120099966	Main relief valve, 281 - 320 bar	19[15, 16, 17]
PS	16	9120099967	Main relief valve, 321 - 350 bar	19[15, 16, 17]
PB	16	9120099968	Kit for sealing main relief valve	20
Y	16	9120099901	PS cavity plugged, no relief funct.	18[15, 16, 17]
PS/PB/Y	16	9120099807	Seal kit	15, 16, 17
CUI + G	25 + 04	9121580319	CPU adaptor w. orifice \varnothing 0.8, BSP	6[3, 4, 5]
CUI + U	25 + 04	9121580320	CPU adaptor w. orifice \varnothing 0.8, UNF	6[3, 4, 5]
CUI2 + G	25 + 04	9120099820	CPU adaptor w. orifice \varnothing 1.5, BSP	6[3, 4, 5]
CUI2 + U	25 + 04	9120099821	CPU adaptor w. orifice \varnothing 1.5, UNF	6[3, 4, 5]
CUI/CUI2 + G	25 + 04	9120099804	Seal kit, BSP adaptor	3, 4, 5
CUI/CUI2 + U	25 + 04	9120099803	Seal kit, UNF adaptor	3, 4, 5