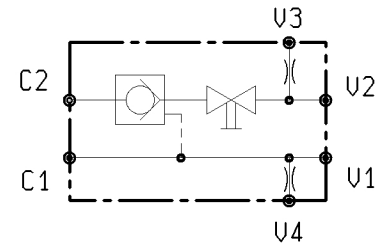
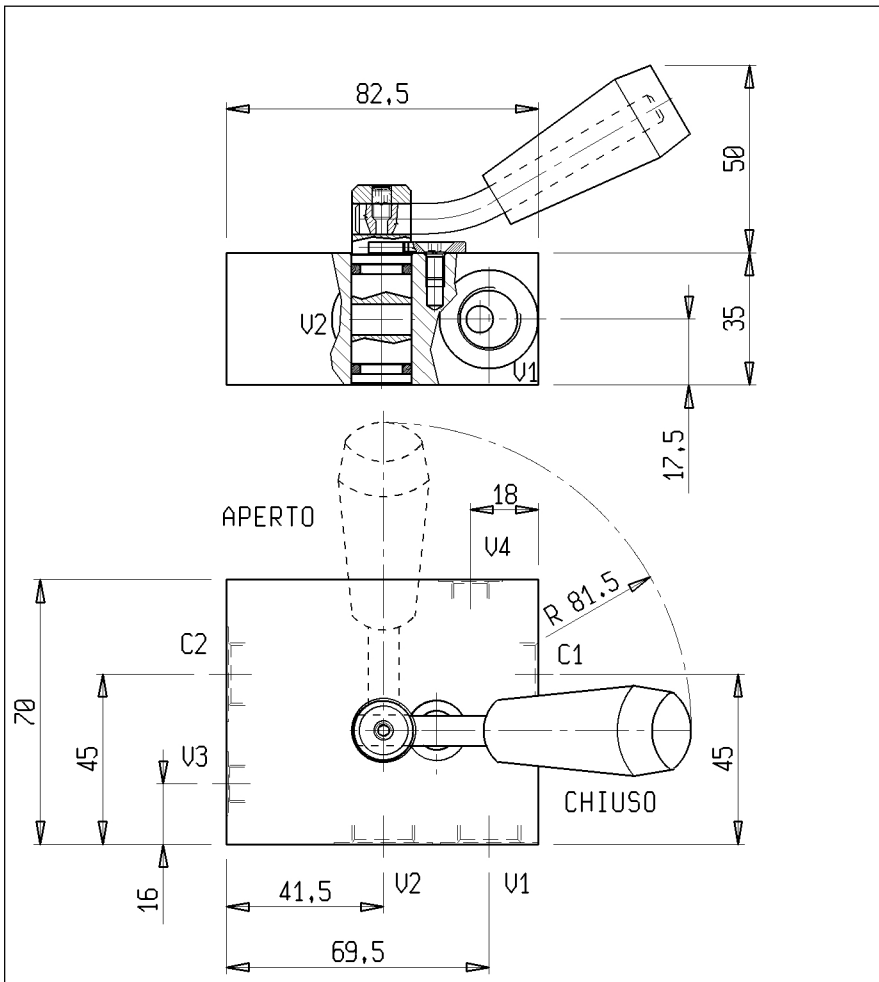




UNIDIREZIONALI, SBLOCCAGGIO OLEODINAMICO,  
SEMPLICE EFFETTO, RUBINETTO  
PILOT OPERATED CHECK WITH MANUAL SHUT-OFF

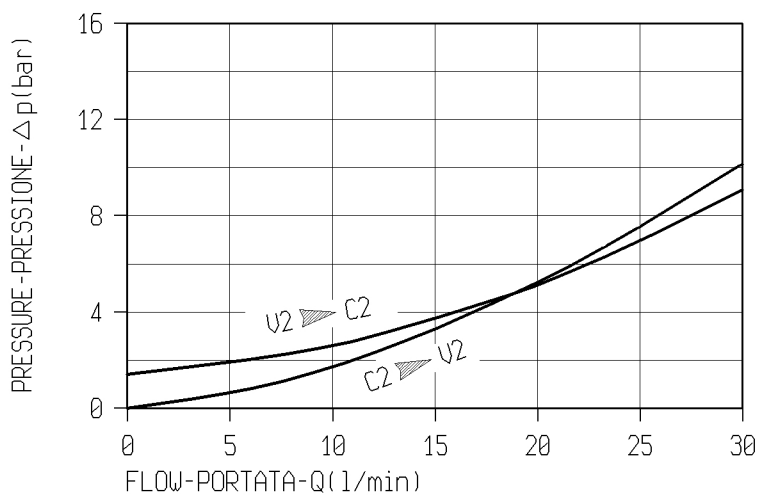
USO-SE-DL-R-G-3818NA-SX-A

05.52.67.10.02.00.00.A



Pressione di lavoro max.  
Max. working pressure 350 bar

Rapporto di pilotaggio  
Pilot ratio 5,4 : 1



**GUARNIZIONE SUL PISTONE  
DI PILOTAGGIO  
O-RING ON PILOT PISTON**

con guarnizione  
with o-ring

MOLLE/SPRINGS			
Inizio apertura (bar) Cracking pressure (bar)		Codice ordinazione Ordering code	
2.2		03.51.01.107	

ATTACCHI/PORT SIZE	
U1-U2-C1-C2	U3 - U4
G 3/8	G 1/8