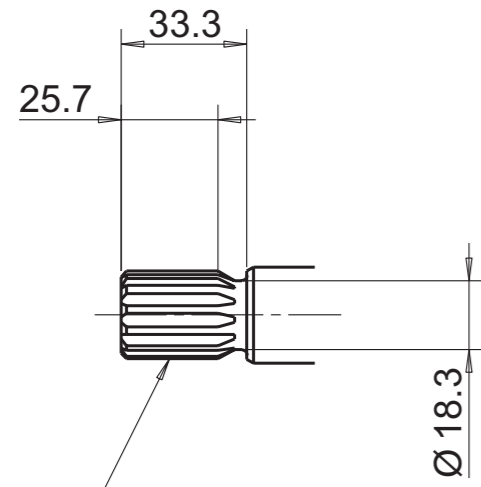
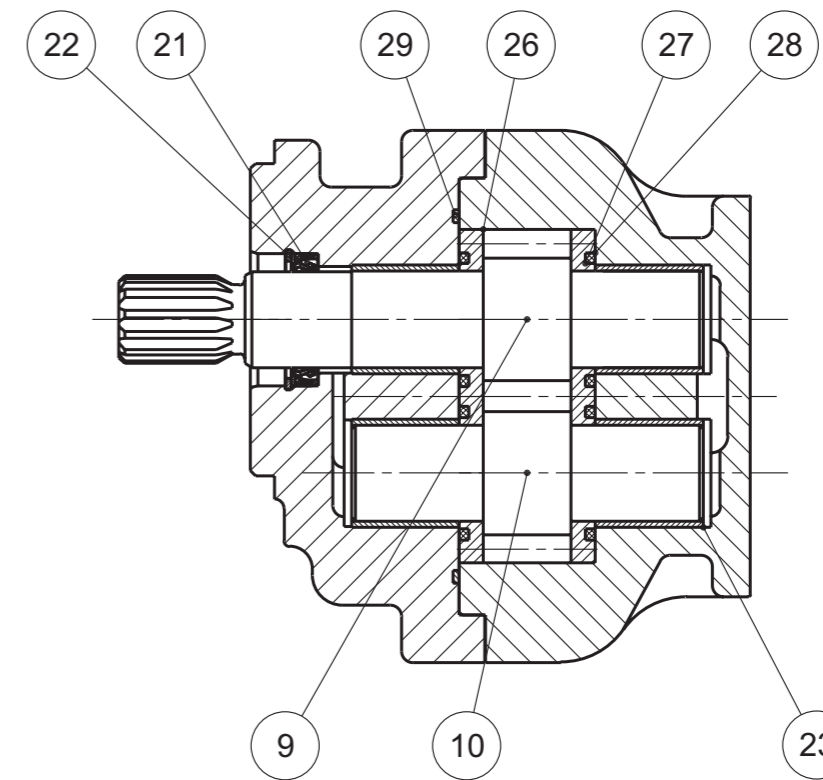
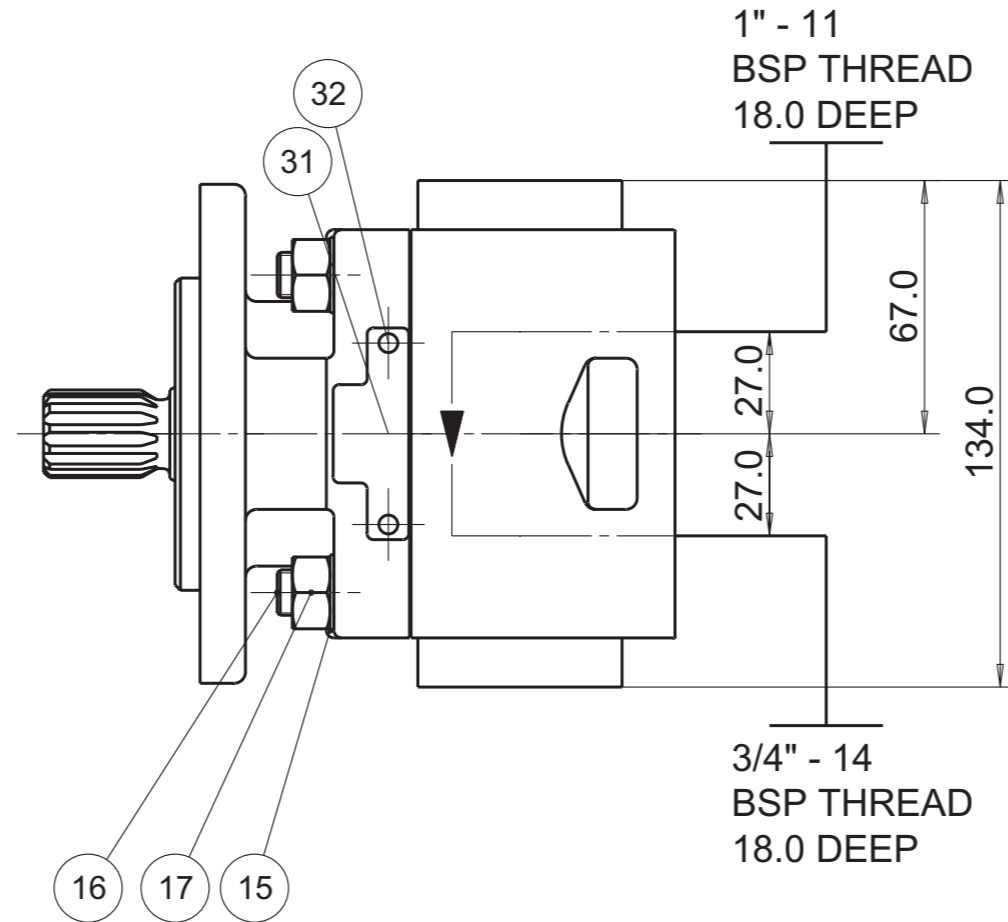
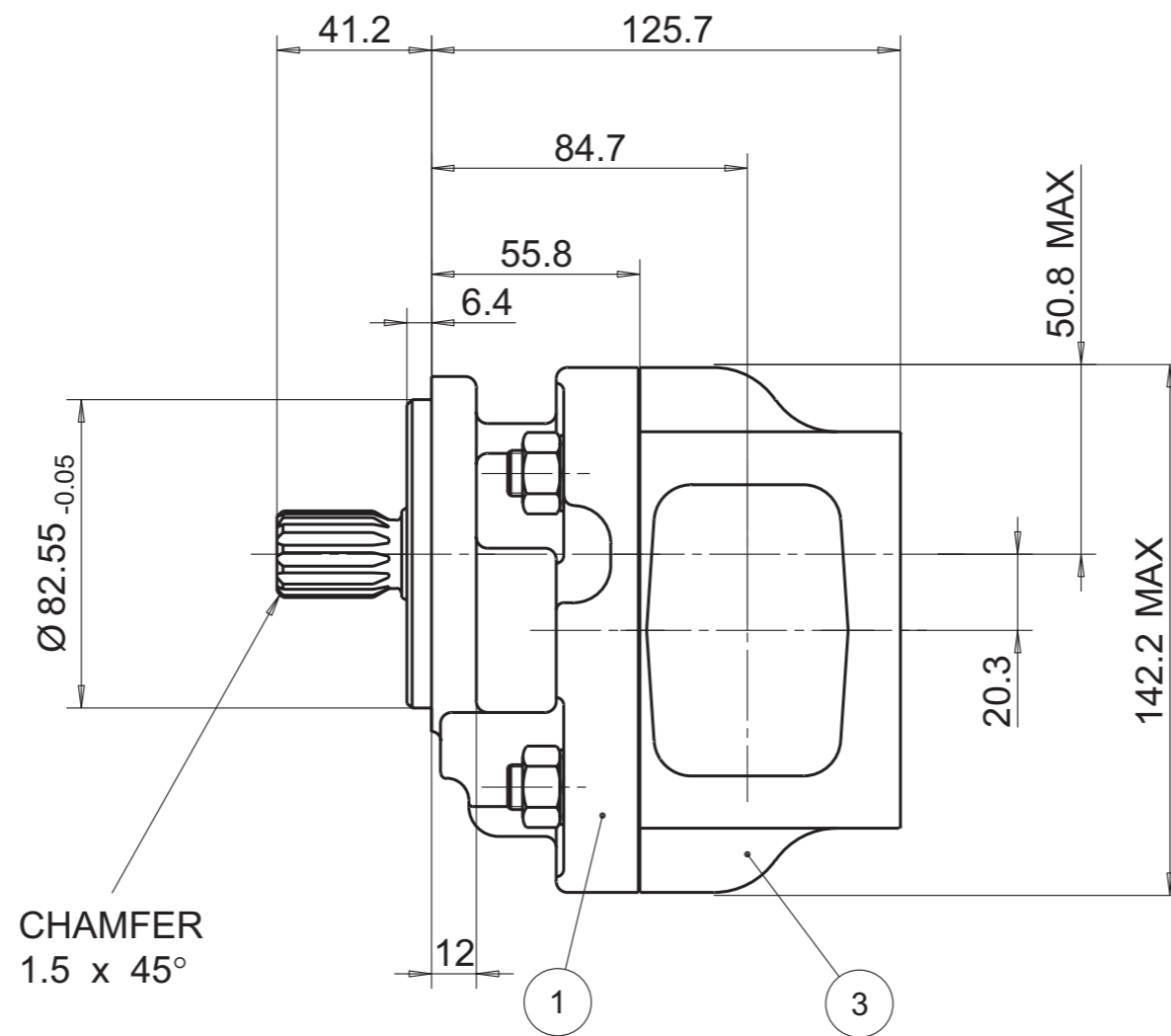
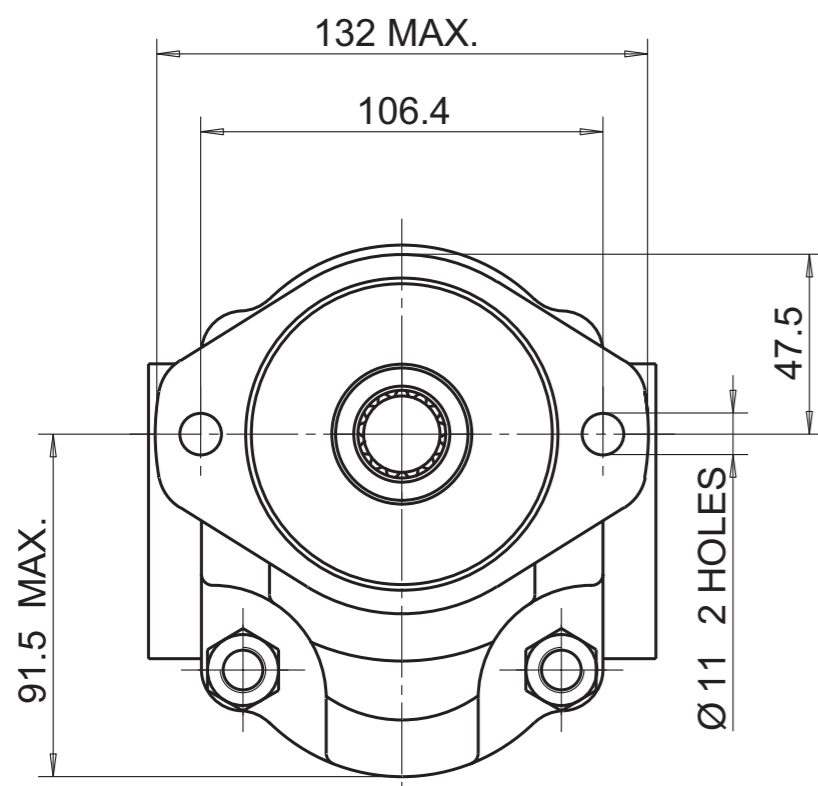


PUMP DATA	
DISPLACEMENT	21,0 ccm
MAX. PRESSURE	275 bar
SPEED RATE	500 TO 3000 min <sup>-1</sup>
MAX. INPUT SHAFT TORQUE	272 Nm
ROTATION	CLOCKWISE



SAE INVOLUTE SPLINE  
13 TEETH - 16/32 PITCH  
FLAT ROOT SIDE FIT  
MAJOR DIA 21.67-21.79  
MINOR DIA 18.631 MAX.



**NOTE**

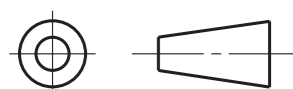
1 FOR ASSEMBLY INSTRUCTIONS SEE DWG. NO. "620-B1"  
"PGP620 PUMP ASSEMBLY INSTRUCTIONS".

ITEM	PART NO	REQD	DESCRIPTION	ITEM	PART NO	REQD	DESCRIPTION
28	8682-015-00Q	2	SEAL. ELEM.	36			
27	8682-016-00L	2	SEAL. ENERG.	35			
26	8682-058-00M	2	BAL. PLATE	34			
25				33			
24				32	391 1432 004	2	SCREW. DR.
23	8682-018-00C	4	BUSH	31	391 2183 227	1	NAMEPLATE
22	9211-530-006	1	CIRCLIP	30			
21	8682-019-00Z	1	SEAL. LIP	29	9312-641-004	1	SEAL. SECT.

20							
19							
18							
17	391 1451 149	4	M12 NUT				
16	8682-007-00M	4	M12 SCREW				
15	9222-575-009	4	WASHER				
14							
13							
12							
11							
10	702 2721 000	1	DRIVEN GEAR				
9	702 1121 400	1	DRIVE GEAR				
8							
7							
6							
5							
4							
3	702 8421 418	1	BODY				
2							
1	2PRF03A1B	1	FLANGE				
ITEM	PART NO	REQ'D	DESCRIPTION	ITEM	PART NO	REQ'D	DESCRIPTION

WITH EXCEPTION OF DRIVE SHAFT, FLANGE SPIGOT AND MTG. FACE  
PLUS AREAS AROUND PORTS, ALL SURFACES ARE PAINTED  
BLACK ZSS - A1 (AA-O-05.2)

THIRD ANGLE PROJECTION



EXP NO.

FIRST USED

07 - 10 - 636

702 9111 180

SYM.

REVISIONS

THIS DOCUMENT CONTAINS INFORMATION THAT IS CONFIDENTIAL AND PROPRIETARY TO PARKER-HANNIFIN CORPORATION ("PARKER"). THIS DOCUMENT IS FURNISHED ON THE UNDERSTANDING THAT THE DOCUMENT AND THE INFORMATION IT CONTAINS WILL NOT BE COPIED OR DISCLOSED TO OTHERS OR USED FOR ANY PURPOSE OTHER THAN CONDUCTING BUSINESS WITH PARKER, AND WILL BE RETURNED AND ALL FURTHER USE DISCONTINUED UPON REQUEST BY PARKER. ALL RIGHTS RESERVED.

**PGP620A0210CD1H2NB1B1E6E5**

MATERIAL

ADM CTR P  
REV DTE 000000

H.E.-STD:

WT 12.1 kg

DIMENSIONS ARE MM

**Parker** Pump & Motor Division  
Chemnitz

DR.BY	DATE	CH.BY	DATE	SCALE
JS	22OCT07	WS	22OCT07	1/2

**702 9111 180**

© 2007 Parker Hannifin Corporation