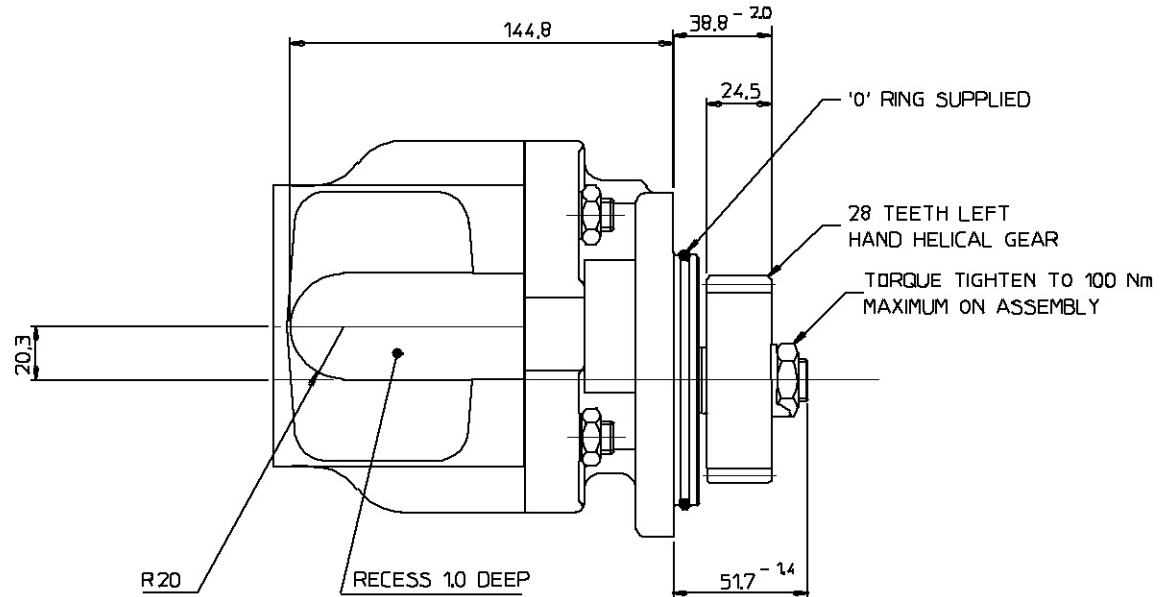


PUMP DATA	
PUMP TYPE	2PR044
THEORETICAL DISPLACEMENT	44.0 cc/rev (2.68 cu in/rev)
MAXIMUM CONTINUOUS PRESSURE P1	210 bar (3045 psi)
MAXIMUM SPEED AT PRESSURE P1	3000 rev/min
MINIMUM SPEED AT PRESSURE P1	500 rev/min
ROTATION WHEN VIEWED ON END OF DRIVESHAFT	CLOCKWISE
APPROX WEIGHT	kg (lb)
OPERATING TEMPERATURE RANGE	CONTINUOUS 0°C TO 80°C COLD START -20°C MAX INTERMITTENT 100°C
SHAFT SEAL TYPE	DOUBLE NITRILE

FOR OPERATING CONDITIONS OUTSIDE THOSE STATED PLEASE CONSULT
ULTRA HYDRAULICS LIMITED TECHNICAL SALES DEPARTMENT,
WITH EXCEPTION OF DRIVESHAFT, FLANGE SPIGOT AND MOUNTING FACE, PLUS
AREAS AROUND PORTS. ALL SURFACES ARE PAINTED WITH BLACK SUNCORITE 528.



VIEW ON ARROW 'B'

Part No.	8 3 2 8 D	THIRD ANGLE PROJECTION
TITLE 2PR044T6B1B1T4-210-CT3P2E		
<small>UNLESS OTHERWISE STATED</small> <small>ALL DIMENSIONS IN MILLIMETRES / INCHES</small> <small>GENERAL MANUFACTURING STANDARDS TO HDS 200 GEOMETRIC TOLERANCES and SYMBOLS TO BS 308</small>		
<small>© ULTRA HYDRAULICS LTD 1999 THIS DRAWING IS THE PROPERTY OF ULTRA HYDRAULICS LIMITED AND IS CONFIDENTIAL. IT IS ISSUED SUBJECT TO THE CONDITIONS THAT:-</small> <small>(1) INFORMATION OR ANY PART CONTAINED IN IT SHALL NOT BE DISCLOSED IN ANY FORM TO A THIRD PARTY.</small> <small>(2) IT OR ANY PART OF IT SHALL NOT BE REPRODUCED IN ANY FORM</small>		
HYDRAULICS LTD. CHELTENHAM		SIZE A0