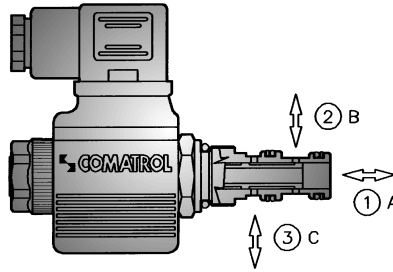
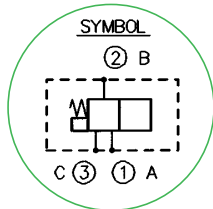


**SOLENOID OPERATED DIRECTIONAL VALVES SPOOL TYPE**

THREE WAY - TWO/THREE POSITION

**NCS**

**Type EDH 04**

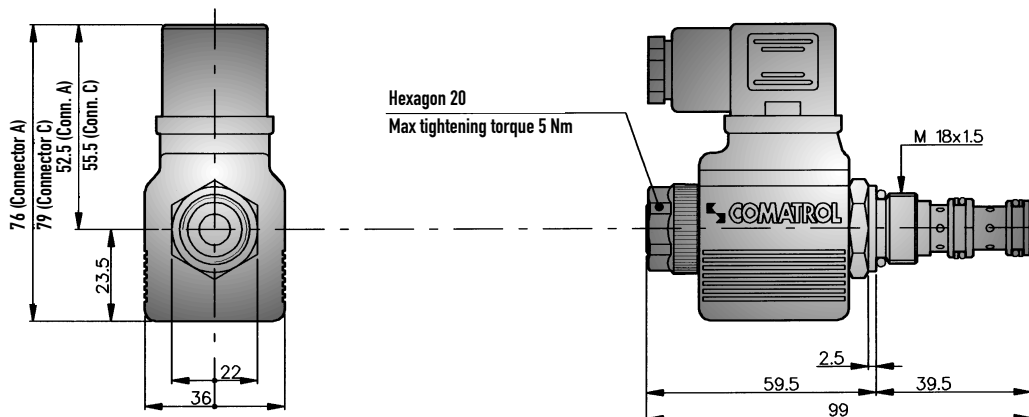


SIZE	04	
NOMINAL PORT SIZE	4.5	
MAX FLOW RATE	l/min	12
	US gpm	3.2
MAX PRESSURE	bar	210
	psi	3000
CAVITY NUMBER	00.95	079
NORMALIZED CAVITY	NCS	04/3
MAX TIGHTENING TORQUE	Nm	40
WEIGHT INCLUDING COIL	kg	0.310
REF		
CAVITY DIMENSIONS	11.450	

**VERSIONS**

TYPE	HYDRAULIC SYMBOLS	FUNCTIONS OBTAINED WITH SOLENOID		OVERLAP	MAX. FLOW RATE l/min	MAX. PRESSURE bar
		De-energized	Energized			
32 01		2 ↔ 3 1	1 ↔ 2 3	-	12	210
32 04		1 ↔ 2 3	1 ↔ 3 2	-	12	210

**DIMENSIONS (mm)**



### CHARACTERISTIC OPERATING CURVES

Measurements effected at 20°C ambient temperature with mineral oil having viscosity of 26 cSt at 50°C.  
 Power input to coil: 90% of nominal value; temperature: 50°C. Cartridges only.

#### PRESSURE DROP

TYPE	① ↔ ②	② ↔ ③	① ↔ ③
01	2	1	
04	1		1

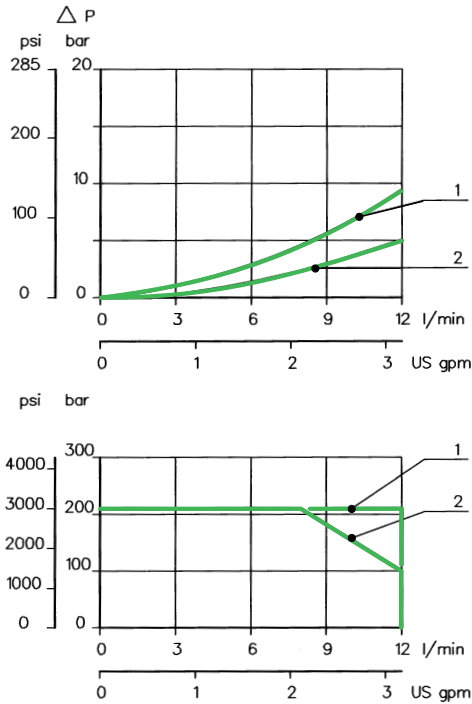
#### LIMITS OF APPLICATION

TYPE	REFERENCE		
	①	②	③
01	2	1	2
04	2	1	1

MAXIMUM PERMISSIBLE PRESSURE THROUGH PORT ① : 210 bar

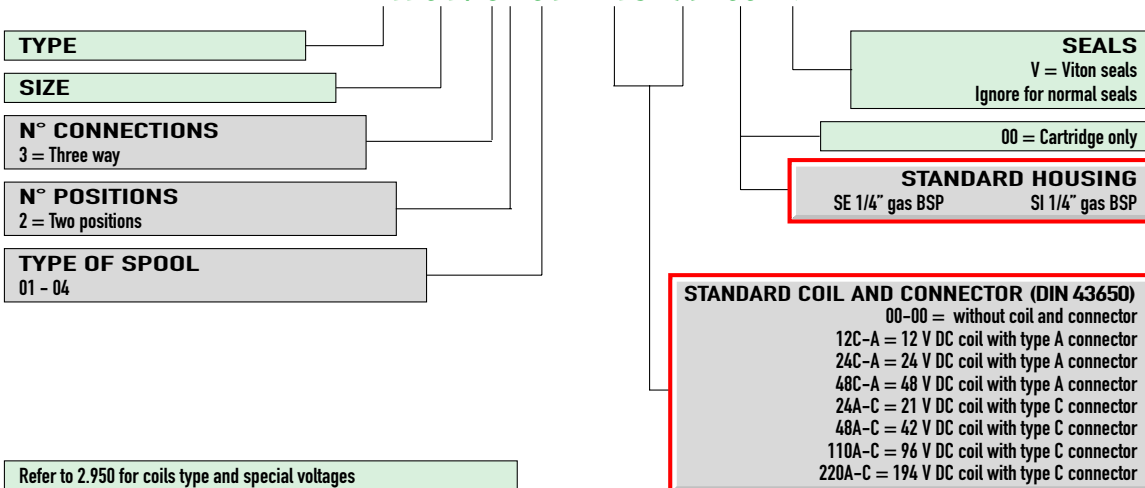
#### RESPONSE TIME (m. sec)

TYPE	Energized	De-energized
01	30 - 70	40 - 80
04		



### EXAMPLE OF ORDER DESIGNATION EDH 04

**EDH 04 / 32 01 - 24C - A - 00 - V**



### SPARE PARTS

Set of standard type external seals with back-up washers (Packs of minimum 10 set)  
 EDH 04/3 = 230.00.016.0