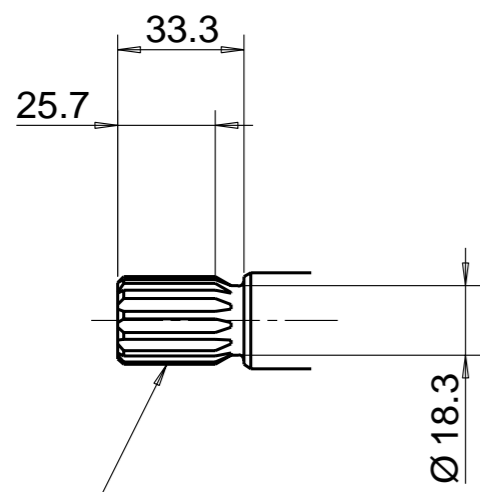
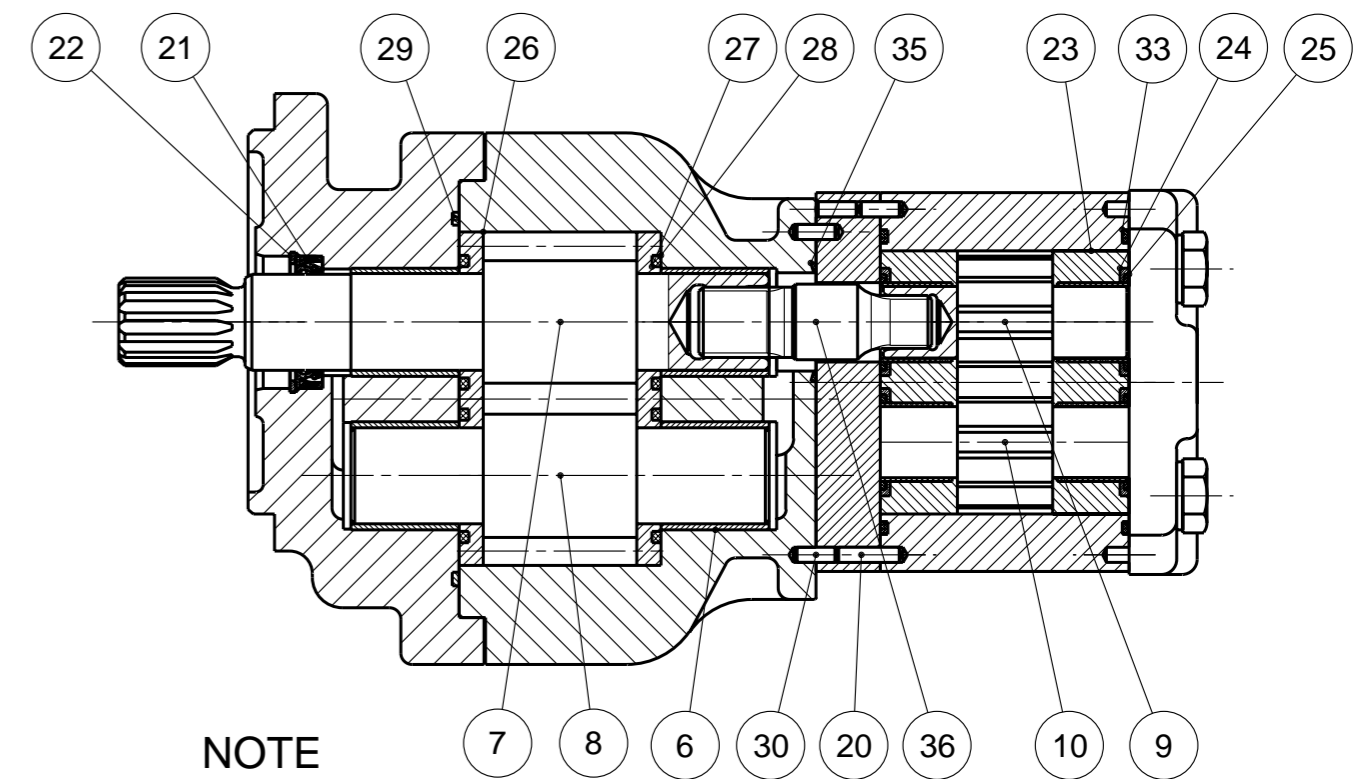
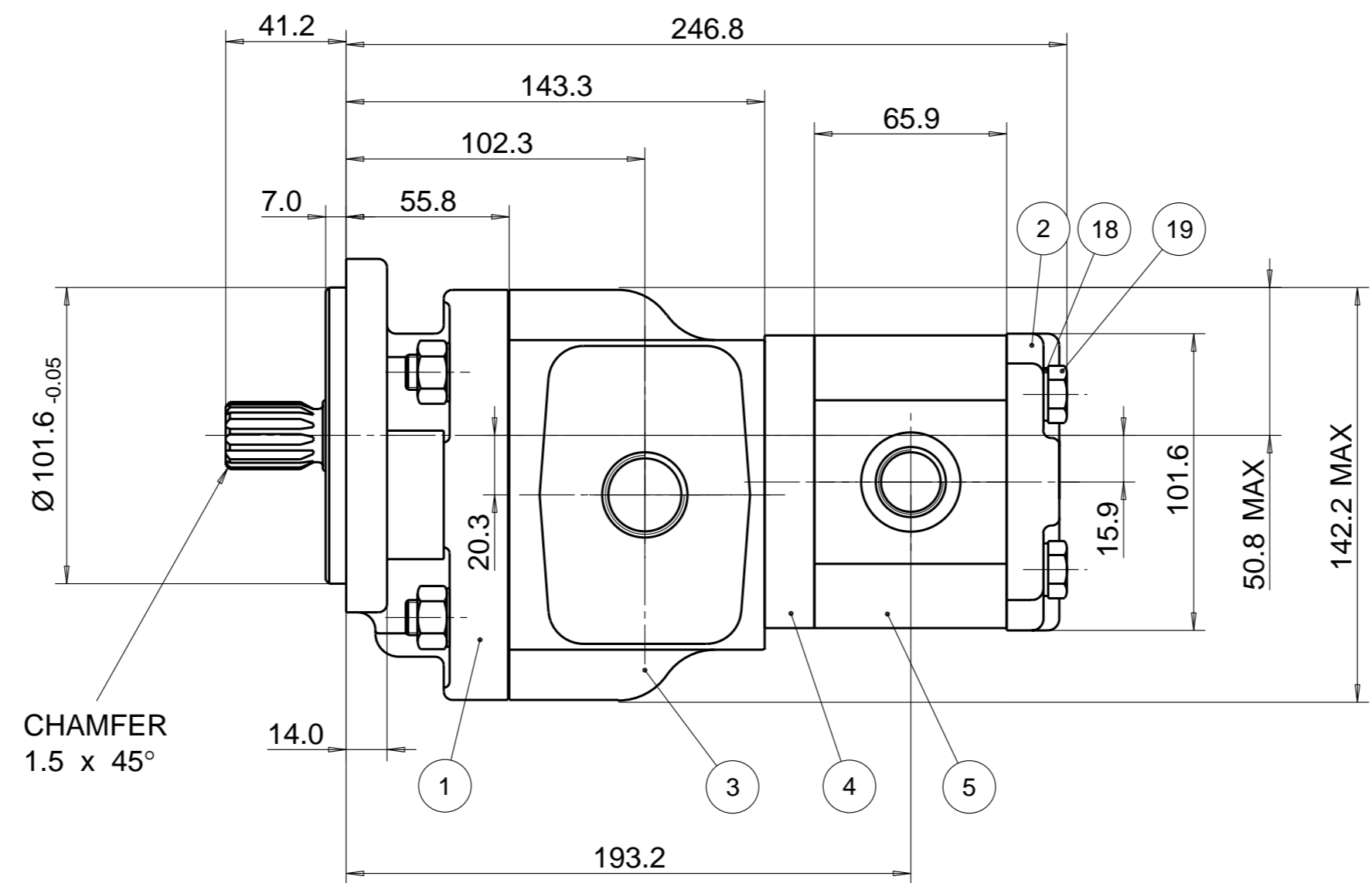
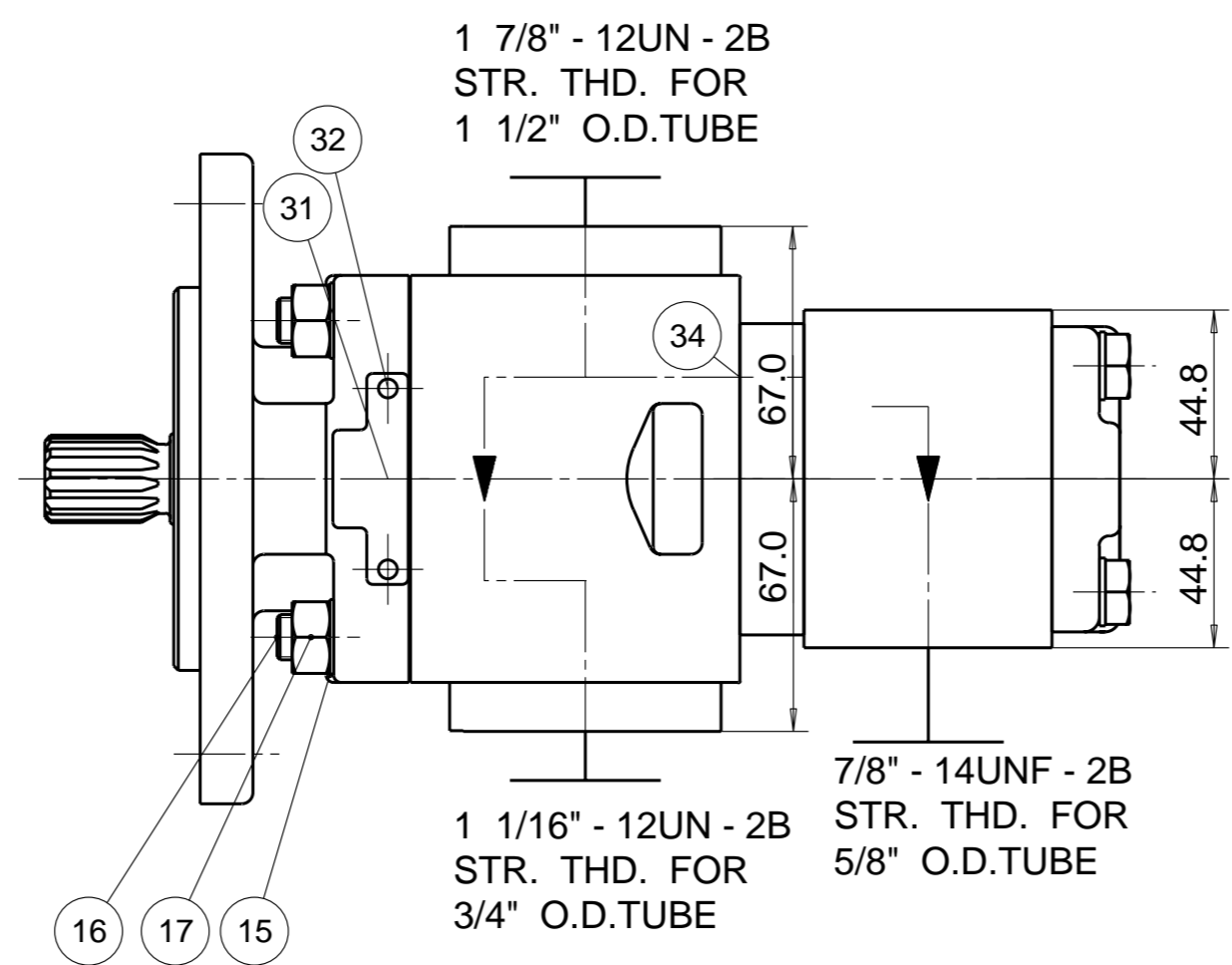
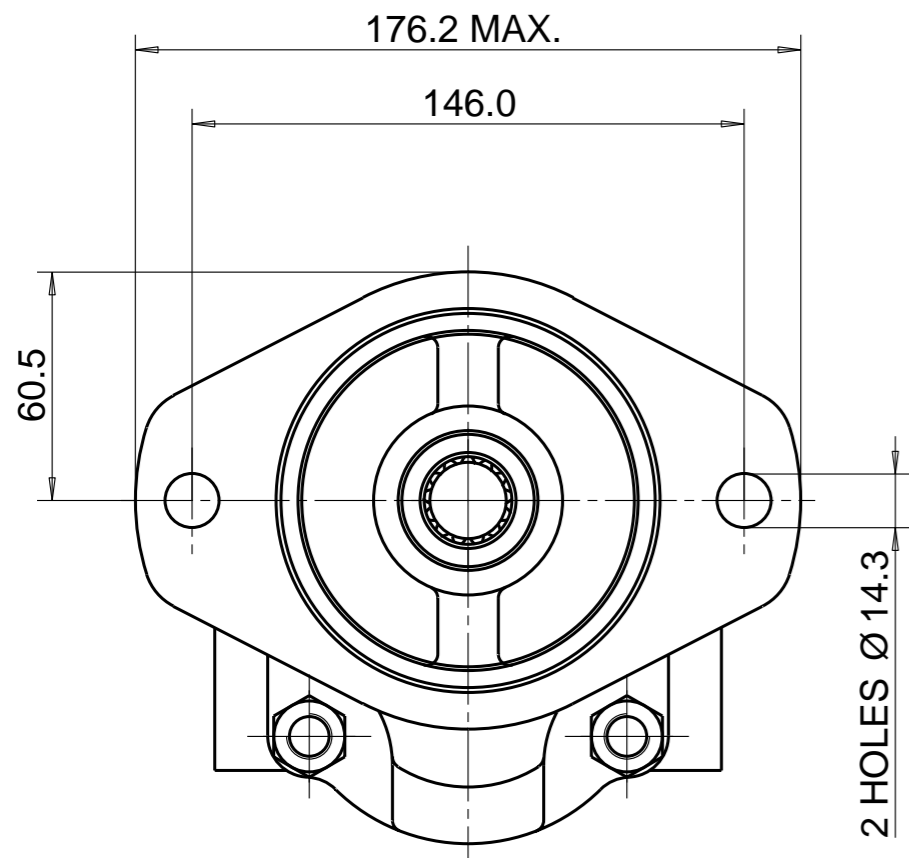


PUMP DATA	PUMP I	PUMP II
DISPLACEMENT	37.0 ccm	16.0 ccm
MAX. PRESSURE	275 bar	210 bar
SPEED RATE	500 TO 3000 min ⁻¹	
MAX. INPUT SHAFT TORQUE	272 Nm	
ROTATION	CLOCKWISE	

CUSTOMER
PART NUMBER:
332 / T4833



SAE INVOLUTE SPLINE
13 TEETH - 16/32 PITCH
FLAT ROOT SIDE FIT
MAJOR DIA 21.67-21.79
MINOR DIA 18.631 MAX.



NOTE

1 FOR ASSEMBLY INSTRUCTIONS SEE DWG. NO. "620-B1" and "511-B1" "PGP620 and PGP511 PUMP ASSEMBLY INSTRUCTIONS".

2 NAMEPLATE LOCATION MAY VARY DUE TO DESIGN CRITERIA OR MANUFACTURING LOCATION. STICKER OPTIONAL FOR #31 & #32

ITEM	PART NO	REQD	ITEM	PART NO	REQD		
28	8682-015-00Q	2	SEAL. ELEM.	36	73330:4106685	1	COUPLING
27	8682-016-00L	2	SEAL. ENERG	35	9313-024-00W	1	O-RING
26	391 2185 150	2	BAL. PLATE	34	9313-019-00G	1	O-RING
25	8611-015-000	2	SEAL,BK UP	33	9313-145-00B	2	O-RING
24	8611-016-00R	2	SEAL,ELEM.	32	391 1432 004	2	SCREW. DR.
23	8898-207-00U	2	BUSH,BLOCK	31	391 2183 227	1	NAMEPLATE
22	9211-530-006	1	CIRCLIP	30	391 2080 078	4	PIN, DOWEL
21	8682-019-00Z	1	SEAL. LIP	29	9312-641-004	1	SEAL. SECT.

ITEM	PART NO	REQD	DESCRIPTION
20	391 2080 079	1	PIN, DOWEL
19	391 1401 547	4	SCREW (110MM)
18	391 3782 231	4	WASHER
17	391 1451 149	4	M12 NUT
16	8682-007-00M	4	M12 SCREW
15	9222-575-009	4	WASHER
14			
13			
12			
11			
10	334 2716 000	1	DRIVEN GEAR
9	334 2616 000	1	DRIVE GEAR
8	702 2737 000	1	DRIVEN GEAR
7	702 1237 400	1	DRIVE GEAR
6	391 0482 237	4	BUSH
5	334 8616 310	1	GEAR HOUSING
4	391 2183 360	1	SPACER
3	702 7237 320	1	BODY
2	334 3000 100	1	PECOV
1	702 5121 008	1	FLANGE

14MAR11 JS 11-03-628-2
09MAR11 JS 11-03-628

THIRD ANGLE PROJECTION
EXP NO.
FIRST USED
03 - 06 - 616
702 9521 014

WITH EXCEPTION OF DRIVE SHAFT, FLANGE SPIGOT AND MTG. FACE PLUS AREAS AROUND PORTS, ALL SURFACES ARE PAINTED BLACK ZSS - A1 (AA-O-05.2)

SYM.	REVISIONS	21MAY15 JS 15-05-614
C	BALANCE PLATE 3912185150 WAS 8682-058-00M	

THIS DOCUMENT CONTAINS INFORMATION THAT IS CONFIDENTIAL AND PROPRIETARY TO PARKER-HANNIFIN CORPORATION ("PARKER"). THIS DOCUMENT IS FURNISHED ON THE UNDERSTANDING THAT THE DOCUMENT AND THE INFORMATION IT CONTAINS WILL NOT BE COPIED OR DISCLOSED TO OTHERS OR USED FOR ANY PURPOSE OTHER THAN CONDUCTING BUSINESS WITH PARKER, AND WILL BE RETURNED AND ALL FURTHER USE DISCONTINUED UPON REQUEST BY PARKER. ALL RIGHTS RESERVED.

PGP620B0370CD1H3*ND8D5C-511A0160XB1D4B1B1

MATERIAL	ADM CTR P	DR.BY DATE	CH.BY DATE	SCALE
H.E.-STD:	REV DTE 21MAY15	PG 25JUN03	UH 25JUN03	1/2
	WT 16.8 kg	DIMENSIONS ARE —MM—		702 9521 014
© 2015 Parker Hannifin Corporation				

Parker Pump & Motor Division
Chemnitz