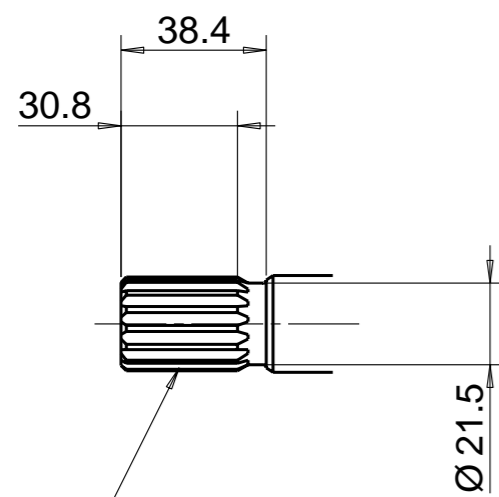
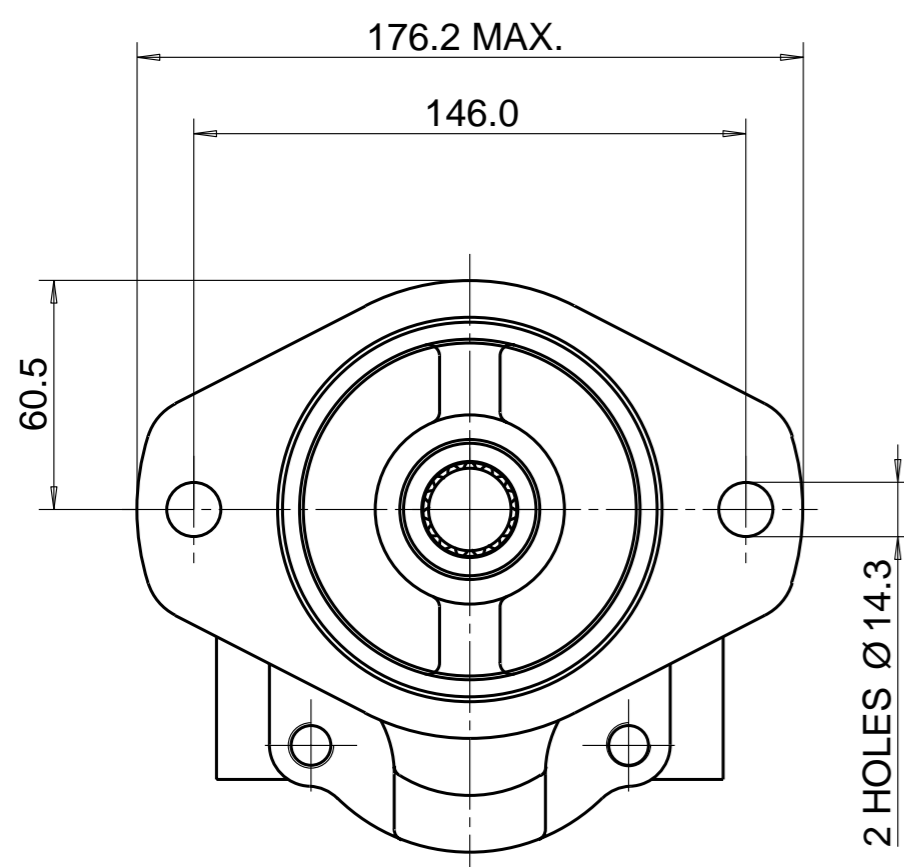


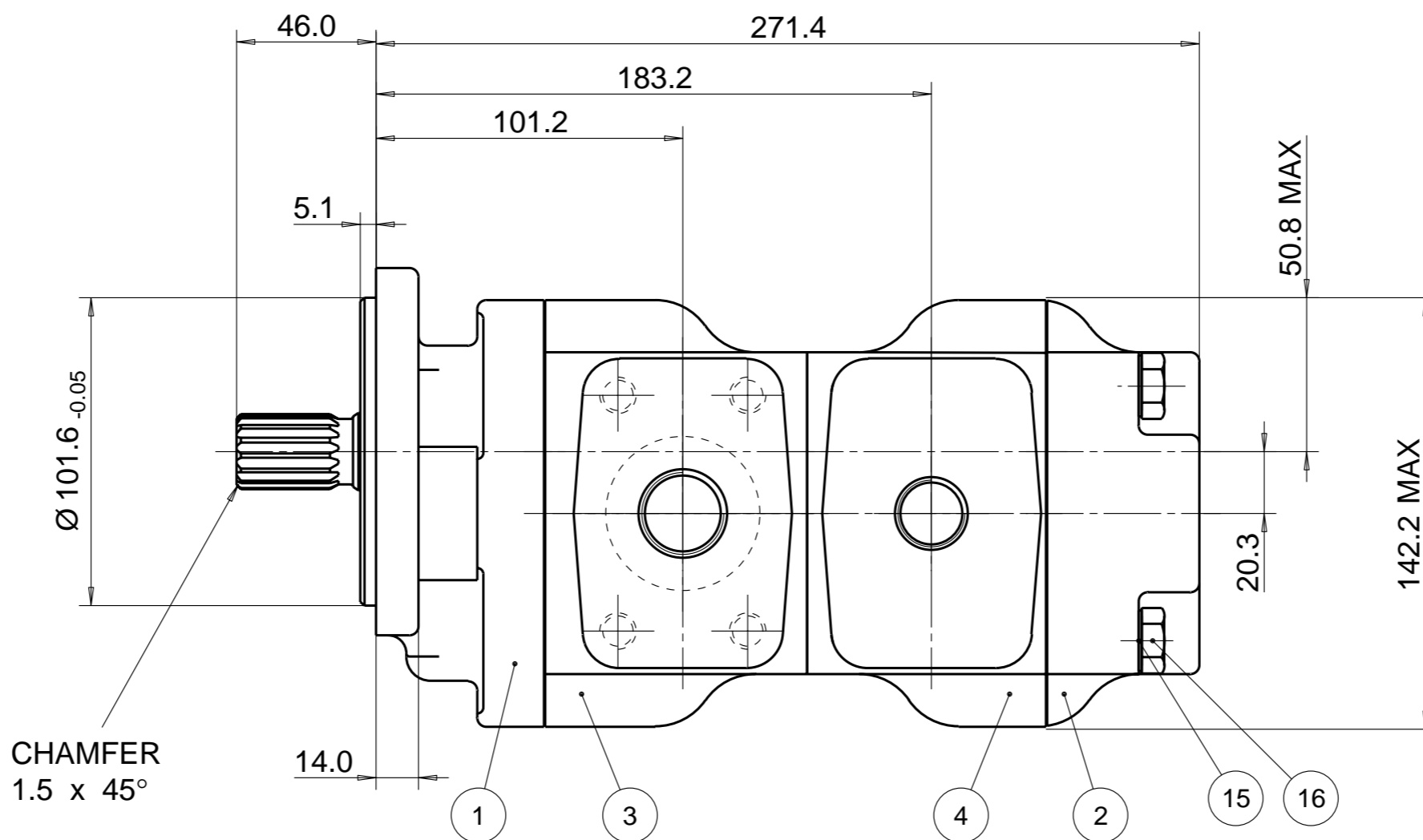
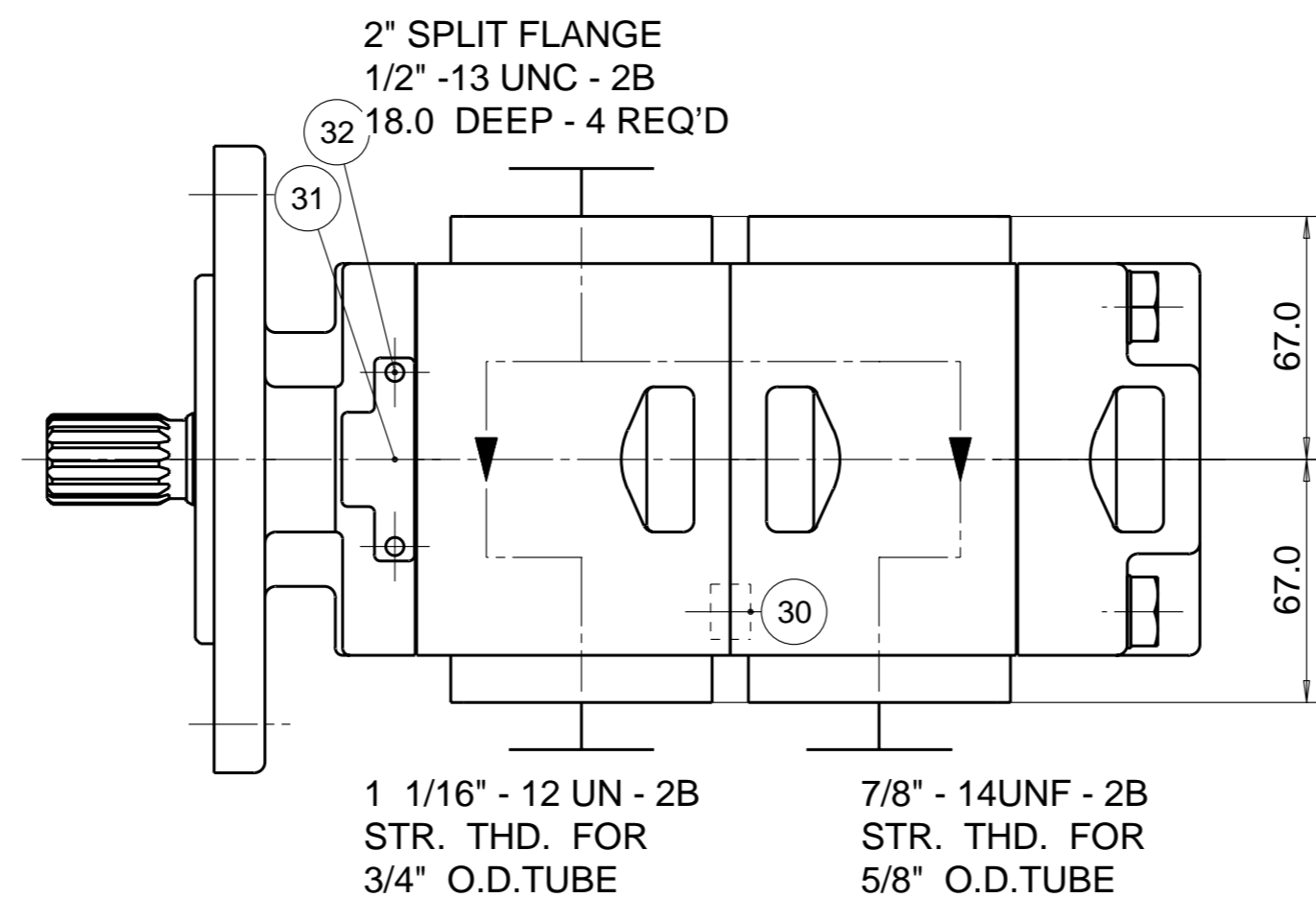
PUMP DATA	PUMP I	PUMP II
DISPLACEMENT	36,0 ccm	29,0 ccm
MAX. PRESSURE	250 bar	275 bar
SPEED RATE	500 TO 2700 min ⁻¹	
MAX. INPUT SHAFT TORQUE	460 Nm	
ROTATION	CLOCKWISE	



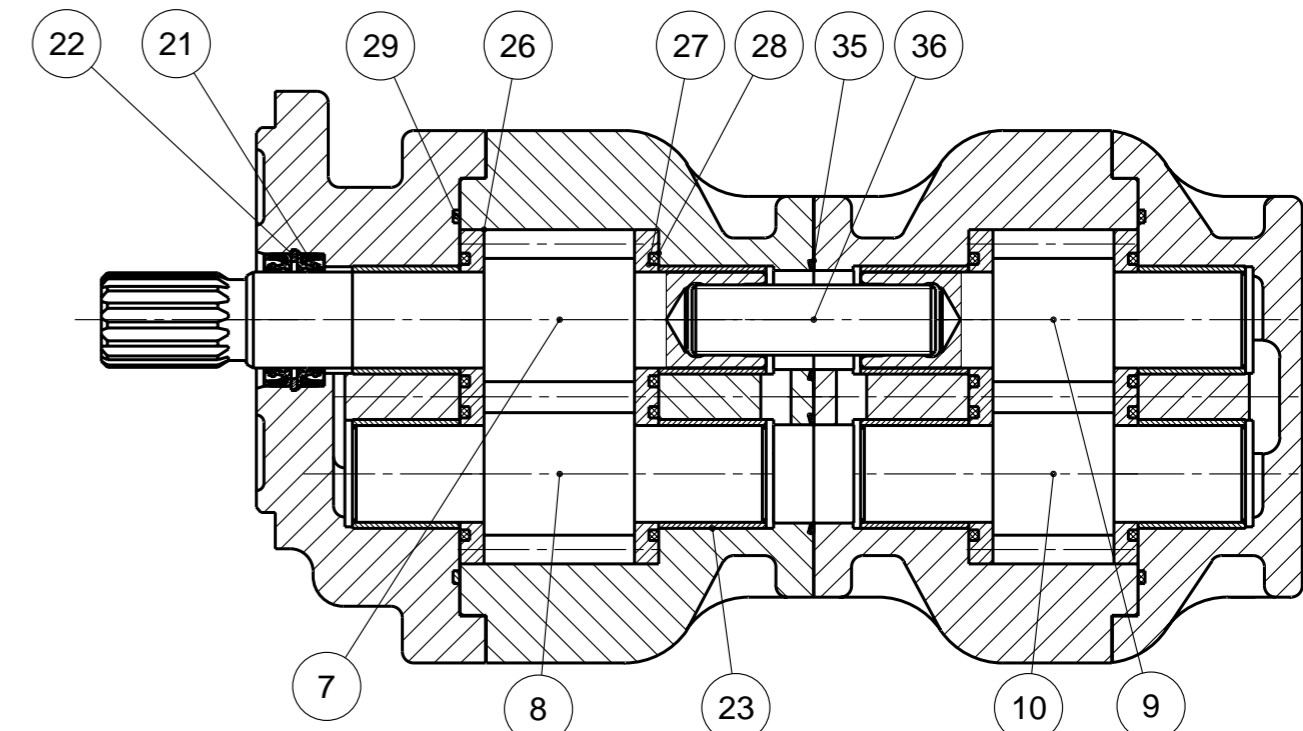
SAE INVOLUTE SPLINE
15 TEETH - 16/32 PITCH
FLAT ROOT SIDE FIT
MAJOR DIA 24.87-24.97
MINOR DIA 21.793 MAX.



2 HOLES Ø 14.3



WITH EXCEPTION OF DRIVE SHAFT, FLANGE SPIGOT AND MTG. FACE
PLUS AREAS AROUND PORTS, ALL SURFACES ARE PAINTED
BLACK ZSS - A1 (AA-O-05.2)



NOTE

- 1 FOR ASSEMBLY INSTRUCTIONS SEE DWG. NO. "620-B1" "PGP620 PUMP ASSEMBLY INSTRUCTIONS".
- 2 NAMEPLATE LOCATION MAY VARY DUE TO DESIGN CRITERIA OR MANUFACTURING LOCATION. STICKER OPTIONAL FOR #31 & #32

ITEM	PART NO	REQD	ITEM	PART NO	REQD
28	8682-015-00Q	4	36	73240:4106696	1
27	8682-016-00L	4	35	9313-024-00W	3
26	391 2185 150	4	34		
25			33		
24			32	391 1432 004	2
23	391 0482 237	8	31	391 2183 227	1
22	9211-530-006	1	30	8676-024-003	2
21	8682-019-00Z	2	29	9312-641-004	2

ITEM	PART NO	REQ'D	DESCRIPTION
20			
19			
18			
17			
16	391 1401 606	4	M12 FASTENER X220
15	9222-575-009	4	WASHER
14			
13			
12			
11			
10	702 2729 000	1	DRIVEN GEAR
9	702 2629 000	1	DRIVE GEAR
8	702 2736 000	1	DRIVEN GEAR
7	702 1236 800	1	DRIVE GEAR
6			
5			
4	702 6429 310	1	BODY
3	702 6236 884	1	BODY
2	2PRC01M	1	COVER
1	2PRF07S1X	1	FLANGE

THIRD ANGLE PROJECTION	
EXP NO.	
FIRST USED	
13 - 04 - 622	
702 9121 180	
SYM.	REVISIONS

THIS DOCUMENT CONTAINS INFORMATION THAT IS CONFIDENTIAL AND PROPRIETARY TO PARKER-HANNIFIN CORPORATION ("PARKER"). THIS DOCUMENT IS FURNISHED ON THE UNDERSTANDING THAT THE DOCUMENT AND THE INFORMATION IT CONTAINS WILL NOT BE COPIED OR DISCLOSED TO OTHERS OR USED FOR ANY PURPOSE OTHER THAN CONDUCTING BUSINESS WITH PARKER, AND WILL BE RETURNED AND ALL FURTHER USE DISCONTINUED UPON REQUEST BY PARKER. ALL RIGHTS RESERVED.

PGP620B0360CE1H3MS6D5C-620A0290XB1D4B1B1

MATERIAL	ADM CTR P	DR.BY DATE	CH.BY DATE	SCALE
H.E.-STD:	REV DTE 000000	AS 26APR13	JS 26APR13	1/2
	WT 23.8 kg	DIMENSIONS ARE —MM—		

702 9121 180

© 2013 Parker Hannifin Corporation

Parker Pump & Motor Division Chemnitz