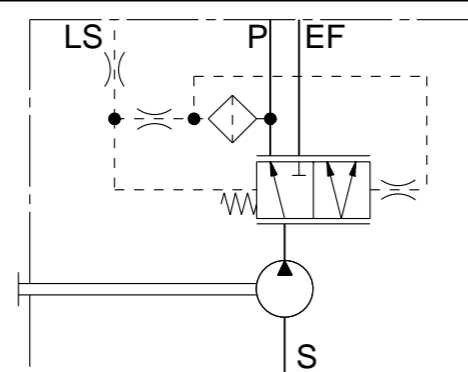


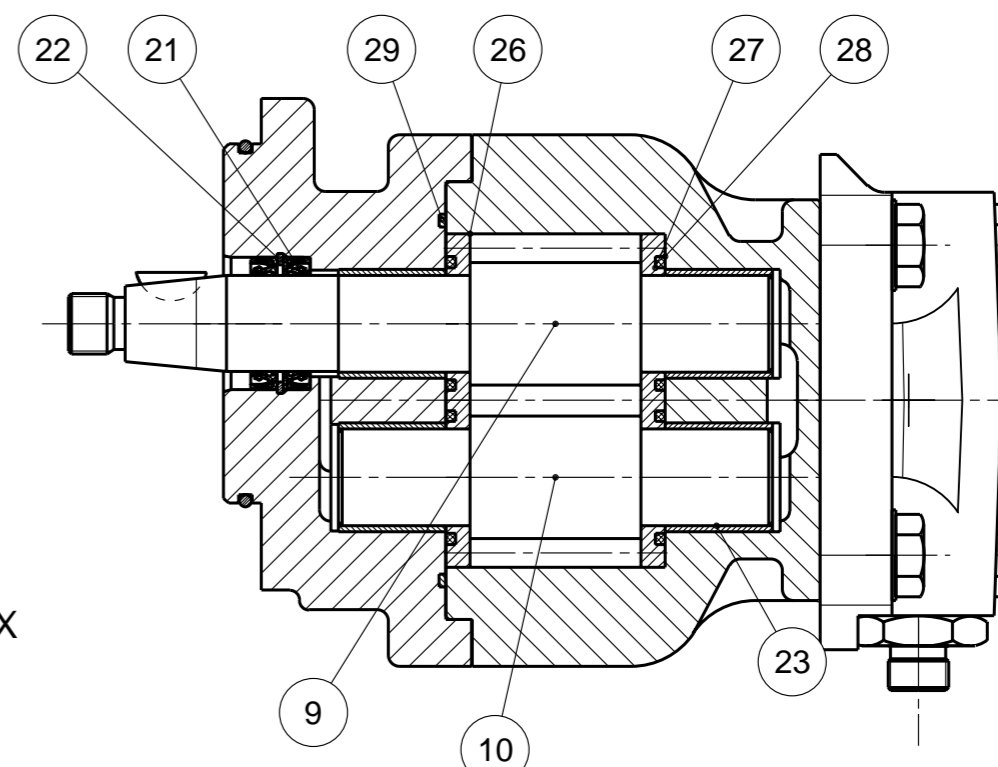
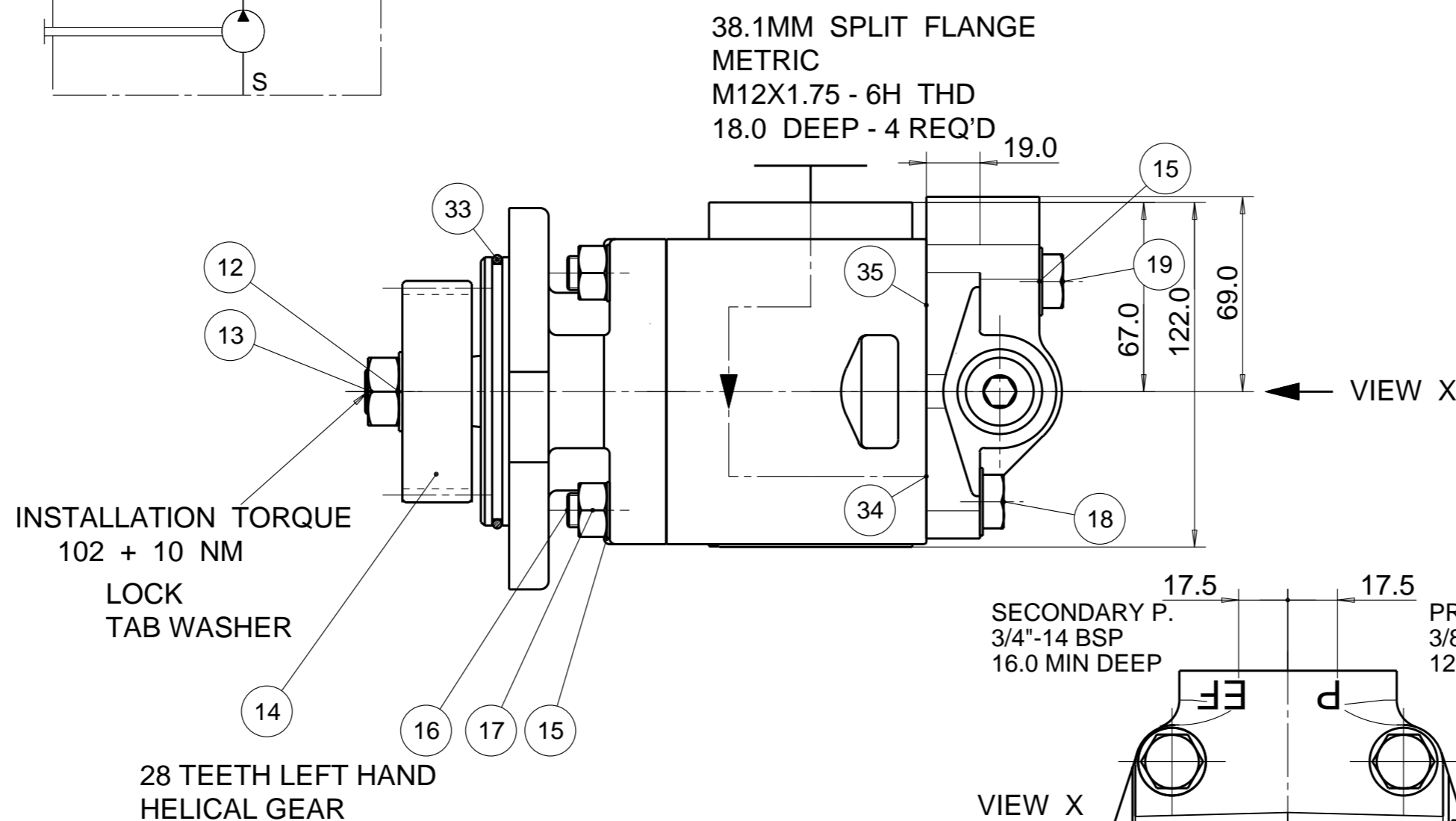
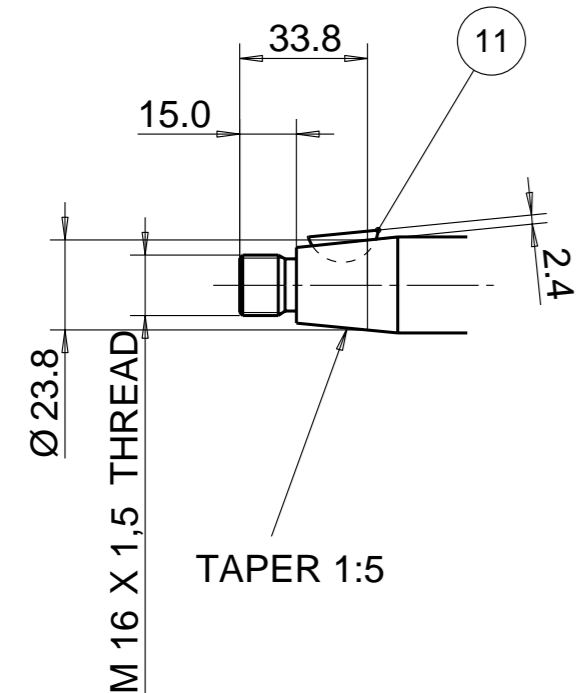
PUMP DATA	
DISPLACEMENT	41,0 ccm
MAX. PRESSURE	SEE VALVE DATA
SPEED RATE	500 TO 2700 min <sup>-1</sup>
MAX. INPUT SHAFT TORQUE	301 Nm
ROTATION	CLOCKWISE



PUMP WITH LOAD SENSING PRIORITY VALVE AND DYNAMIC LOAD SENSING SIGNAL  
 MAX. PRESSURE AT PRIORITY PORT (P) 180 bar  
 MAX. PRESSURE AT EXCESS PORT (EF) 250 bar  
 CONTROL PRESSURE 7 bar

CPN: 246546

WOODRUFF KEY  
 5,0 X 7,5 DIN 6888

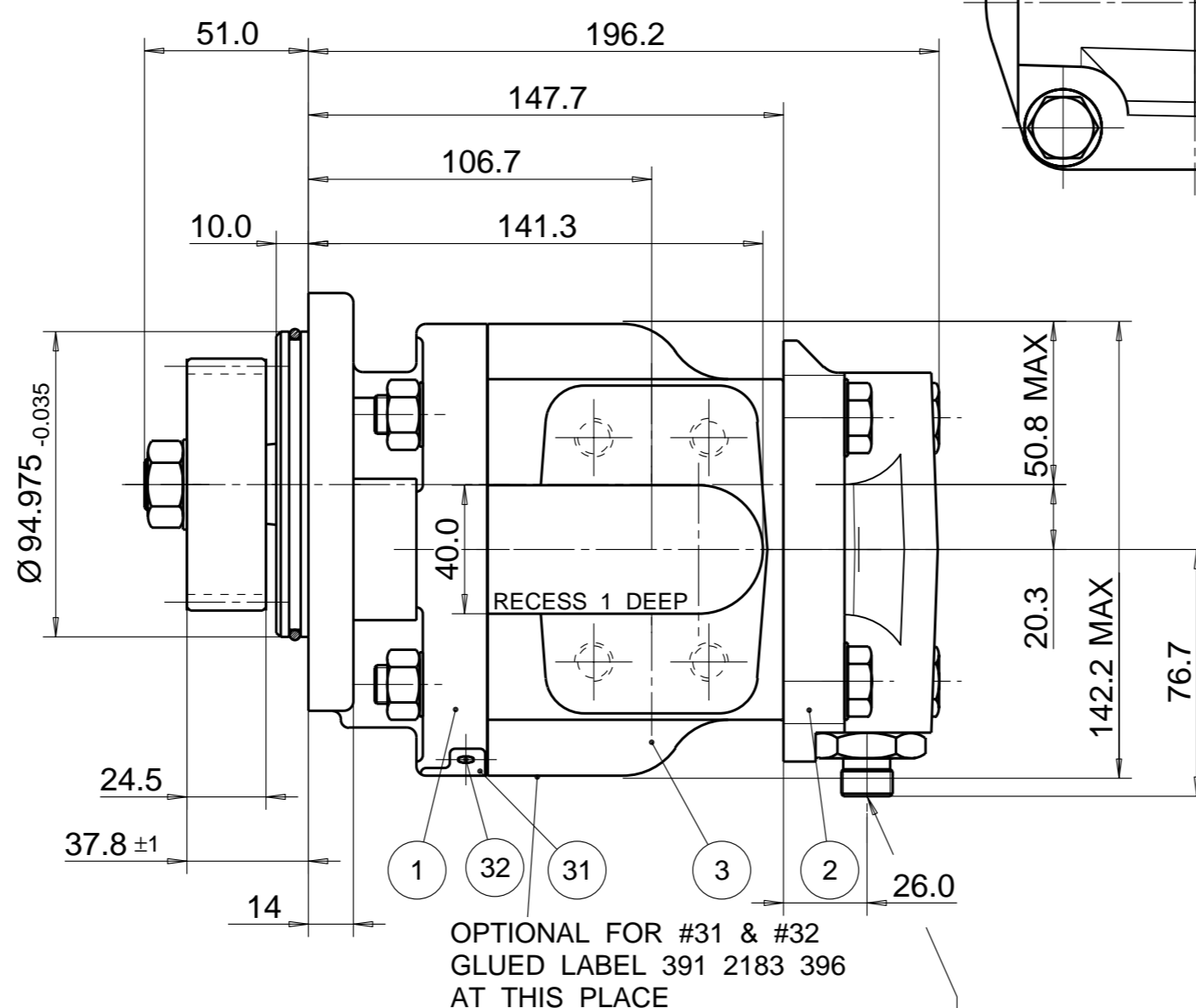
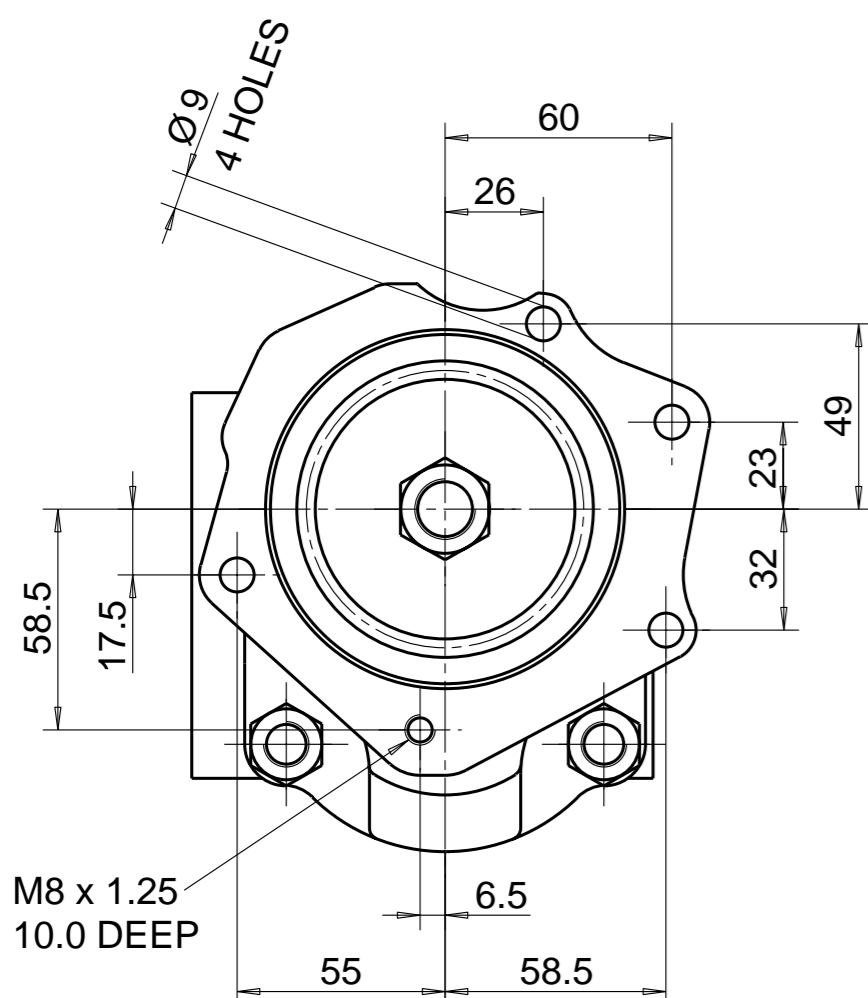


NOTE

1 FOR ASSEMBLY INSTRUCTIONS SEE DWG. NO. "620-B1" "PGP620 PUMP ASSEMBLY INSTRUCTIONS".

ITEM	PART NO	REQD	ITEM	PART NO	REQD
28	8682-015-00Q	2	SEAL. ELEM.	36	
27	8682-016-00L	2	SEAL. ENERG	35	9313-022-00A 1 O-RING
26	391 2185 150	2	BAL. PLATE	34	9313-024-00W 1 O-RING
25				33	9321-743-00J 1 O-RING
24				32	391 1432 004 2 SCREW DR.
23	391 0482 237	4	BUSH	31	391 2183 227 1 NAMEPLATE
22	9211-530-006	1	CIRCLIP	30	
21	8682-019-00Z	2	SEAL. LIP	29	9312-641-004 1 SEAL. SECT.

ITEM	PART NO	REQ'D	DESCRIPTION
20			
19	9112-405-009	2	CAPSCREW (55 MM)
18	391 1401 779	2	CAPSCREW (40 MM)
17	391 1451 149	4	M12 NUT
16	8682-007-00M	4	M12 SCREW
15	9222-575-009	8	WASHER
14	8682-006-00R	1	HELICAL GEAR
13	9116-004-009	1	NUT
12	8682-010-00F	1	WASHER
11	391 1781 095	1	KEY
10	702 2741 000	1	DRIVEN GEAR
9	702 1841 802	1	DRIVE GEAR
8			
7			
6			
5			
4			
3	702 7941 004	1	BODY
2	350 9713 029	1	CVP 100
1	2PRF03P1V	1	FLANGE



LS PORT  
 M16x1.5 THD.  
 INTERNAL CONE TO  
 DIN 3853-S8W

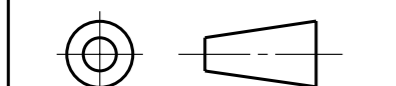
WITH EXCEPTION OF DRIVE SHAFT, FLANGE SPIGOT AND MTG. FACE PLUS AREAS AROUND PORTS, ALL SURFACES ARE PAINTED BLACK ZSS - A1 (AA-O-05.2)

F #26 BALANCE PLATE 391 2185 150 WAS 8682-058-00M

SYM. REVISIONS 27AUG12 TG 12-08-621

09JUL12 SK 12-07-605  
 21JUL10 WS 10-07-640

THIRD ANGLE PROJECTION



EXP NO.

FIRST USED

03 - 06 - 610

702 9111 075

THIS DOCUMENT CONTAINS INFORMATION THAT IS CONFIDENTIAL AND PROPRIETARY TO PARKER-HANNIFIN CORPORATION ("PARKER"). THIS DOCUMENT IS FURNISHED ON THE UNDERSTANDING THAT THE DOCUMENT AND THE INFORMATION IT CONTAINS WILL NOT BE COPIED OR DISCLOSED TO OTHERS OR USED FOR ANY PURPOSE OTHER THAN CONDUCTING BUSINESS WITH PARKER, AND WILL BE RETURNED AND ALL FURTHER USE DISCONTINUED UPON REQUEST BY PARKER. ALL RIGHTS RESERVED.

PGP620A0410CT2T5MT5B1LYAK

MATERIAL

H.E.-STD:

ADM CTR P

REV DTE 27AUG12

WT 16 kg

DIMENSIONS ARE MM

**Parker** Pump & Motor Division  
 Chemnitz

DR. BY DATE CH. BY DATE SCALE  
 JS 19JUN06 WS 19JUN06 1/2

702 9111 075

© 2012 Parker Hannifin Corporation