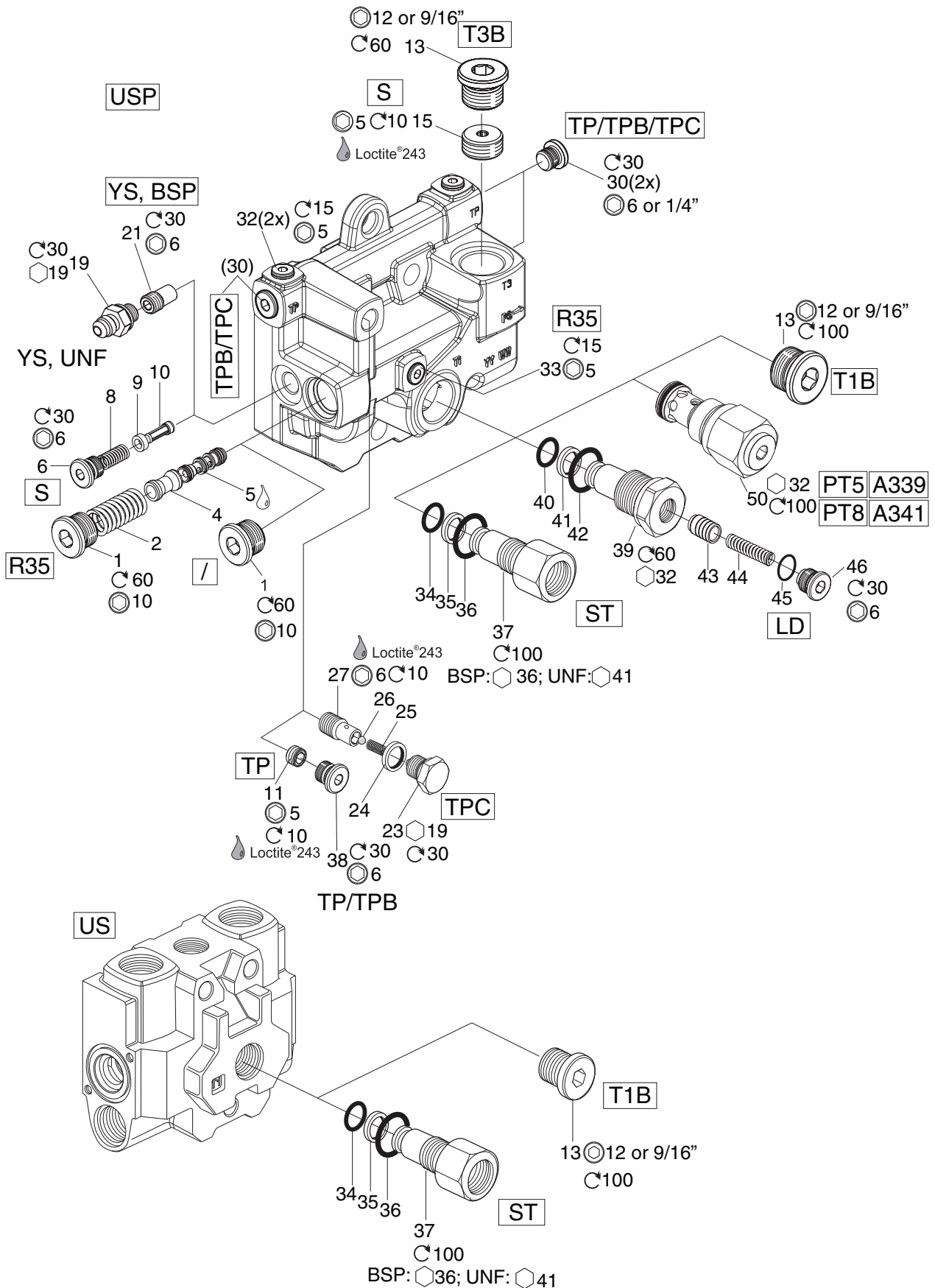


USP, US, R35, S, ST, YS, T3B, T1B, TP, TPB, TB, TPC, PT, LD



Outlet Options**Directional Control Valves
Series F130CF/F130CP**

| See Customer Specification | | | | |
|----------------------------|-------------|------------|---------------------------------------|--|
| Code | Pos | Part | Description | Remarks / Items |
| R35 | 37 | 301000K853 | Pilot pressure reducer, 35 bar | 1, 2, 4, 5, 33 |
| R35, / | 37 | 398000K061 | Plug (O-ring) 1/2", BSP | 1 |
| S | 39 | 398000K054 | Strainer in pilot circuit | 6, 8, 9, 10 |
| YS + G | 39 + 04 | 393000K075 | Connection for external strainer, BSP | 21 |
| YS + U | 39 + 04 | 393000K076 | Connection UNF | 19, 21 |
| YS + U | 39 + 04 | - | Nipple 6F4OMXS | 19 |
| T3B + G | 34 + 04 | - | Plug VSTI3/4EDCF | 13 |
| T3B + U | 34 + 04 | - | Plug 12HP5ON-S | 13 |
| S | 36 | 301000K855 | Plug G1/2", series connection | 15 (BSP - threaded, used on all) |
| ST + G | 33 + 04 | 9121580343 | Series connection adaptor, BSP | 37 [34, 35, 36] |
| ST + U | 33 + 04 | 6763067 | Series connection adaptor, UNF | 37 [34, 35, 36] |
| ST + G | 33 + 04 | 9120099806 | Seal kit ST, BSP | 34, 35, 36 |
| ST + U | 33 + 04 | 9120099805 | Seal kit ST, UNF | 34, 35, 36 |
| TP | 40 | 6763014 | Connection for separate pilot tank | 11, 38 |
| T1B + G | 33 + 04 | - | Plug VSTI3/4EDCF | 13 |
| T1B + U | 33 + 04 | - | Plug 12 HP5ON-S | 13 |
| TPC | 40 | 301000K857 | TP connection plugged, BSP | 23 [24], 25, 26, 27 (TPB, with built-in check valve) |
| PT5 + G | 33 + 04 | 6763525 | PT5, Counter pressure valve, BSP | 50 |
| PT5 + U | 33 + 04 | 6763526 | PT5, Counter pressure valve, UNF | 50 |
| PT8 + G | 33 + 04 | 6763527 | PT8, Counter pressure valve, BSP | 50 |
| PT8 + U | 33 + 04 | 6763528 | PT8, Counter pressure valve, UNF | 50 |
| A339 + G | 33 + 04 | 6763529 | PT16, Counter pressure valve, BSP | 50 |
| A339 + U | 33 + 04 | 6763530 | PT16, Counter pressure valve, UNF | 50 |
| A341 + G | 33 + 04 | 6763531 | PT20, Counter pressure valve, BSP | 50 |
| A341 + U | 33 + 04 | 6763532 | PT20, Counter pressure valve, UNF | 50 |
| TP, TPB, TPC; R35 | 40; 37 | - | Plug VSTI1/8EDCF | 32 and 33 |
| S; TP, TPB, TPC+G | 39; 40 + 04 | - | Plug VSTI1/4EDCF | 6, 30 and 38 |
| TP, TPB, TPC + U | 40 + 04 | - | Plug 6HP5ON-S | 30 |
| LD + G | 33 + 04 | 6760648 | Adaptor LD, cpl, BSP | 39 [40, 41, 42, 43, 44, 45, 46] |
| LD + U | 33 + 04 | 6760646 | Adaptor LD, cpl, UNF | 39 [40, 41, 42, 43, 44, 45, 46] |
| LD + G, U | 33 + 04 | 6763202 | Seal kit, LD | 40, 41, 42, 45 |