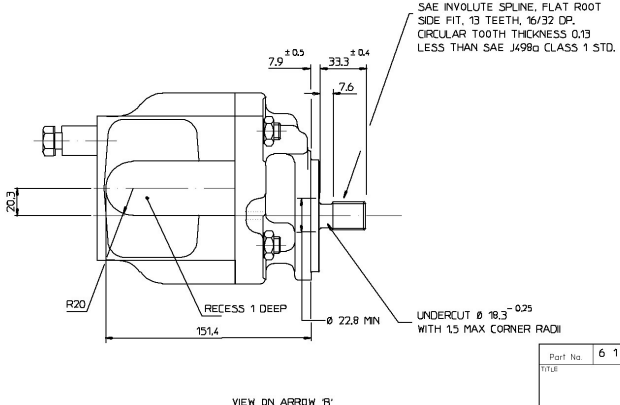


TORQUE TIGHTEN TO  
 48 ± 3 Nm AFTER ASSEMBLY  
 OF SUPPORT BRACKET.  
 NOTE - SERRATED WASHER  
 MUST BE FITTED UNDER BOLT HEAD.

NOTE:- PUMP SUPPLIED WITH 2 OFF M12  
 FLAIN WASHERS IN PLACE OF BRACKET.  
 THESE MUST BE REMOVED PRIOR TO ASSEMBLY  
 OF PUMP TO ENGINE.

PUMP DATA	
PUMP TYPE	2PR050
THEORETICAL DISPLACEMENT	50.0 cc/rev ( 3.05 cu in/rev )
MAXIMUM CONTINUOUS PRESSURE P1	220 bar ( 3190 psi )
MAXIMUM SPEED AT PRESSURE P1	3000 rev/min
MINIMUM SPEED AT PRESSURE P1	500 rev/min
ROTATION WHEN VIEWED ON END OF DRIVESHAFT	CLOCKWISE
APPROX WEIGHT	kg ( lb )
OPERATING TEMPERATURE RANGE	CONTINUOUS 0°C TO 80°C COLD START -20°C MAX INTERMITTENT 100°C
SHAFT SEAL TYPE	DOUBLE NITRILE



FOR OPERATING CONDITIONS OUTSIDE THOSE STATED PLEASE CONSULT  
 ULTRA HYDRAULICS LIMITED TECHNICAL SALES DEPARTMENT.  
 WITH EXCEPTION OF DRIVESHAFT, FLANGE SPIGOT AND MOUNTING FACE, PLUS  
 AREAS AROUND PORTS, ALL SURFACES ARE PAINTED WITH BLACK SUNCORITE 528.

REV	BY	DATE	DESCRIPTION	REVISION NO

VIEW ON ARROW 'B'

Part No.	6 1 2 5 7	THIRD ANGLE PROJECTION	
TITLE	994	INSTALLATION OF 2PR050 C PUMP	
<small>UNLESS OTHERWISE STATED                  ALL DIMENSIONS ARE IN MILLIMETERS                  DIMENSIONS IN PARENTHESES ARE IN INCHES                  DIMENSIONS IN SQUARE BRACKETS ARE IN INCHES                  DIMENSIONS IN CIRCLES ARE IN INCHES                  DIMENSIONS IN BRACKETS ARE IN INCHES</small>		<small>© ULTRA HYDRAULICS LTD. THIS DRAWING IS THE PROPERTY OF ULTRA HYDRAULICS                  LIMITED AND IS UNREPRODUCIBLE WITHOUT THE WRITTEN PERMISSION OF ULTRA HYDRAULICS LTD.                  THE DESIGN IS A TRADE SECRET OF ULTRA HYDRAULICS LTD.                  ANY UNAUTHORIZED REPRODUCTION OR DISSEMINATION OF THIS DRAWING IS STRICTLY PROHIBITED.                  ULTRA HYDRAULICS LTD. IS NOT RESPONSIBLE FOR THE DESIGN OR PERFORMANCE OF ANY PARTS MADE TO THIS DRAWING.                  THE USER ACCEPTS ALL RISKS AND LIABILITIES OF ANY KIND ARISING FROM THE USE OF THIS DRAWING.                  ULTRA HYDRAULICS LTD. IS NOT RESPONSIBLE FOR THE DESIGN OR PERFORMANCE OF ANY PARTS MADE TO THIS DRAWING.                  THE USER ACCEPTS ALL RISKS AND LIABILITIES OF ANY KIND ARISING FROM THE USE OF THIS DRAWING.</small>	1 2 3 4 5 6 7 8 9 10 11 12 13 14 15 16 17 18 19 20 21 22
ULTRA HYDRAULICS LTD. CHELTENHAM			SHEET AO