

Directional valves ▶ Electrically operated

3/2-directional valve, Series CD07

▶ Qn = 1400 l/min ▶ Pilot valve width: 30 mm ▶ NC, NO ▶ pipe connection ▶ compressed air connection output: G 1/4 ▶ Electr. connection: Plug, EN 175301-803, form A ▶ Manual override: with detent, without ▶ single solenoid



00134142

Version	Spool valve, zero overlap
Sealing principle	Soft sealing
Working pressure min./max.	See table below
Control pressure min./max.	3 bar / 10 bar
Ambient temperature min./max.	See table below
Medium temperature min./max.	See table below
Medium	Compressed air
Max. particle size	50 µm
Oil content of compressed air	0 mg/m³ - 1 mg/m³
Compressed air connection	according to ISO 228-1 with directional pilot air exhaust EN 175301-803:2006
Connector standard	
Degree of protection	See table below
With connection	Protected against polarity reversal
Compatibility index	13, 14
Duty cycle	100 %
Weight	See table below
Materials:	
Housing	Die cast zinc; Polyamide, fiber-glass reinforced
Seals	Acrylonitrile Butadiene Rubber

Technical Remarks

- The pressure dew point must be at least 15 °C under ambient and medium temperature and may not exceed 3 °C.
- The oil content of compressed air must remain constant during the life cycle.
- Use only the approved oils from AVENTICS, see chapter „Technical information“.
- ATEX optional: ATEX version can be produced by combining the basic valve without coil with an ATEX coil. ATEX ID: see ATEX coils catalog page.
- option valve: The input and output compressed air connections can be exchanged. The valve can thereby be used in the NC or NO operating mode.

Operating voltage			Voltage tolerance			Power consumption	Switch-on power		Holding power	
DC	AC 50 Hz	AC 60 Hz	DC	AC 50 Hz	AC 60 Hz	DC	AC 50 Hz	AC 60 Hz	AC 50 Hz	AC 60 Hz
						W	VA	VA	VA	VA
24 V	-	-	-10% / +10%	-	-	2.1	-	-	-	-
-	110 V	110 V	-	-20% / +10%	-10% / +20%	-	6.8	5.7	4.3	3.3
-	230 V	230 V	-	-20% / +10%	-10% / +20%	-	6.9	5.8	4.8	4.1
24 V	-	-	-20% / +30%	-	-	4.5	-	-	-	-
-	24 V	24 V	-	-20% / +10%	-10% / +20%	-	6.9	5.6	4.3	3.2

	MO	Compressed air connection					Operating voltage			Part No.	
		Input	Output	Exhaust	Pilot connection	Pilot control exhaust	DC	AC 50 Hz	AC 60 Hz		
	NC/NO		G 1/4	G 1/4	G 1/4	-	M5	24 V	-	-	5772070220
								-	110 V	110 V	5772075270
								-	230 V	230 V	5772075280
								24 V	-	-	5772072220
								-	24 V	24 V	5772075220

3/2-directional valve, Series CD07

▶ Qn = 1400 l/min ▶ Pilot valve width: 30 mm ▶ NC, NO ▶ pipe connection ▶ compressed air connection output:
G 1/4 ▶ Electr. connection: Plug, EN 175301-803, form A ▶ Manual override: with detent, without ▶ single solenoid

		MO	Compressed air connection					Operating voltage			Part No.
			Input	Output	Exhaust	Pilot connection	Pilot control exhaust	DC	AC 50 Hz	AC 60 Hz	
	NC/NO		G 1/4	G 1/4	G 1/4	-	M5	-	-	-	5772075302
	NC/NO		G 1/4	G 1/4	G 1/4	G 1/8	M5	24 V	-	-	5772080220 5772085270 5772085280 5772085220
	NC/NO		G 1/4	G 1/4	G 1/4	G 1/8	M5	-	-	-	5772085302
	NC/NO		G 1/4	G 1/4	G 1/4	-	M5	24 V	-	-	R412004091
	NC/NO		G 1/4	G 1/4	G 1/4	G 1/8	M5	24 V	-	-	R412004092
	NC/NO	-	G 1/4	G 1/4	G 1/4	-	M5	24 V	-	-	5772960220
	NC/NO	-	G 1/4	G 1/4	G 1/4	-	M5	-	-	-	5772965302

Part No.	Hold-ing power		Switch-on power		Power consumption	Flow rate value			Working pressure min./max.	Ambient temperature min./max.	Medium temperature min./max.	
	AC 50 Hz	AC 60 Hz	AC 50 Hz	AC 60 Hz		24 V DC	Qn	Qn 1▶2				Qn 2▶3
	[VA]	[VA]	[VA]	[VA]		[W]	[l/min]					[bar]
5772070220	-	-	-	-	2.1	-	-	-	-	-	-	
5772075270	4.3	3.3	6.8	5.7	-	-	-	-	-	-	-	
5772075280	4.8	4.1	6.9	5.8	-	1400	1400	1400	3 / 10	-25°C / +50°C	-25°C / +50°C	
5772072220	-	-	-	-	4.5	-	-	-	-	-	-	
5772075220	4.3	3.2	6.9	5.6	-	-	-	-	-	-	-	
5772075302	-	-	-	-	-	1400	1400	1400	3 / 10	-25°C / +50°C	-25°C / +50°C	
5772080220	-	-	-	-	2.1	-	-	-	-	-	-	
5772085270	4.3	3.3	6.8	5.7	-	1400	1400	1400	-0.95 / 10	-25°C / +50°C	-25°C / +50°C	
5772085280	4.8	4.1	6.9	5.8	-	-	-	-	-	-	-	
5772085220	4.3	3.2	6.9	5.6	-	-	-	-	-	-	-	
5772085302	-	-	-	-	-	1400	1400	1400	-0.95 / 10	-25°C / +50°C	-25°C / +50°C	
R412004091	-	-	-	-	2.1	1400	1400	1400	3 / 10	-10°C / +50°C	-10°C / +50°C	
R412004092	-	-	-	-	2.1	1400	1400	1400	-0.95 / 10	-10°C / +50°C	-10°C / +50°C	
5772960220	-	-	-	-	2.1	1400	1400	1400	3 / 10	-25°C / +50°C	-25°C / +50°C	
5772965302	-	-	-	-	-	1400	1400	1400	3 / 10	-25°C / +50°C	-25°C / +50°C	

Directional valves ▶ Electrically operated

3/2-directional valve, Series CD07

▶ Qn = 1400 l/min ▶ Pilot valve width: 30 mm ▶ NC, NO ▶ pipe connection ▶ compressed air connection output: G 1/4 ▶ Electr. connection: Plug, EN 175301-803, form A ▶ Manual override: with detent, without ▶ single solenoid

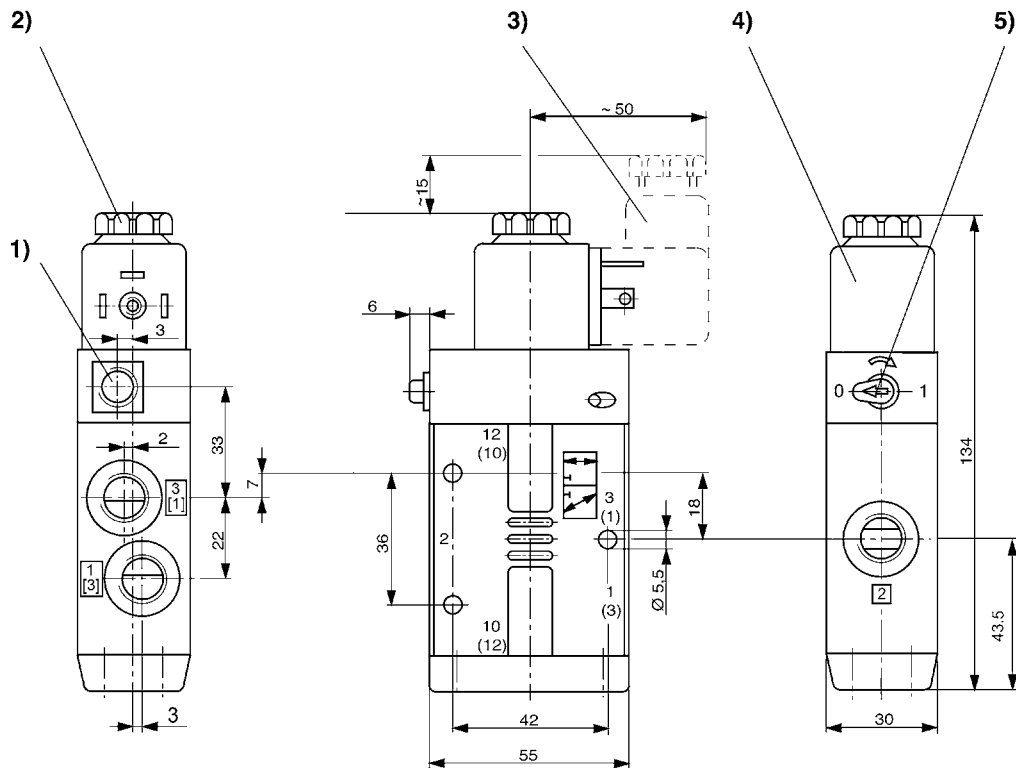
Part No.	Switch-on time	Switch-off time	Protection class	Weight	Note
	t_F	t_E		[kg]	
	[ms]	[ms]			
5772070220	25	45	IP 65	0.54	1)
5772075270					1)
5772075280					1)
5772072220					1); 4)
5772075220					1)
5772075302	-	-	-	-	1); 3); 5)
5772080220	25	45	IP 65	0.54	2)
5772085270					
5772085280					
5772085220					
5772085302	-	-	-	-	2); 3); 5)
R412004091	25	45	IP 65	0.54	1); 6)
R412004092	25	45	IP 65	0.54	2); 6)
5772960220	25	45	IP 65	0.54	1)
5772965302	-	-	-	-	1); 3)

HHB = Manual override

- 1) Pilot: internal
- 2) Pilot: External
- 3) Basic valve without coil
- 4) Higher voltage tolerance
- 5) ATEX optional
- 6) ATEX certified

Nominal flow Qn at 6 bar and $\Delta p = 1$ bar

Dimensions



D577_207

- 1) only with separate pilot control G 1/8 2) after removal of cap M 5 internal thread M5 3) el. connector can
- 4) coil can be plugged at 45° intervals 5) manual override