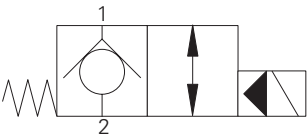


SV1-16-C - Solenoid valve

Poppet type, 2-way, 2- position, normally closed
132 L/min (35 USgpm) • 210 bar (3000 psi)



Operation

In the de-energized position the valve blocks flow from port 2 to 1 and free flow is allowed from port 1 to 2.
When the solenoid is energized the pilot poppet is pulled off the seat allowing the valve to open in both directions.

Performance data

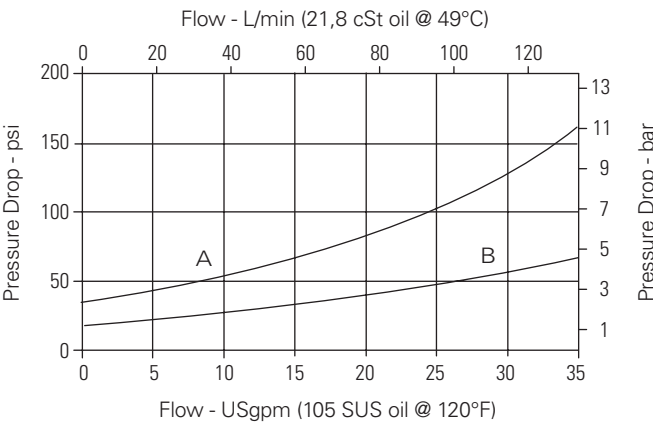
Ratings and specifications

Performance data is typical with fluid at 21,8 cSt (105 SUS) and 49°C (120°F)	
Typical application pressure (all ports)	210 bar (3000 psi)
Rated flow	132 L/min (35 USgpm)
Internal leakage, port 2 to port 1	less than 5 drops/min, max @ 210 bar (3000 psi)
Temperature range	-40° to 120°C (-40° to 248°F)
Cavity	C-16-2
Weight including coil	1,15 kg (2.53 lbs)
Fluids	All general purpose hydraulic fluids such as: MIL-H-5606, SAE 10, SAE 20 etc.
Filtration	Cleanliness code 18/16/13
Seal kit	565810 (Buna-N), 02-889609 (Viton®)

Viton is a registered trademark of E.I. DuPont

Pressure drop

Cartridge only



- A** - Port 2 to port 1 energized
B - Port 1 to port 2 de-energized

Where measurements are critical request certified drawings. We reserve the right to change specifications without notice.

SV1-16-C/CM/CR - Solenoid valve

Poppet type, 2-way, 2-position, normally closed
132 L/min (35 USgpm) • 210 bar (3000 psi)

Model code

SV1 - 16 (V) - C (*) - * - **** * - 00**

1 2 3 4 5 6 7 8 9

A

1 Function

SV1 - Solenoid valve

2 Size

16 - 16 size

3 Seal material

Blank - Buna-N

V - Viton®

4 Style

C - Normally closed

6 Port size

Code	Port size	Housing number
0	Cartridge only	
6B	3/4" BSPP	02-175463*
12T	SAE 12	566149*
6G	3/4" BSPP	876718
10H	SAE 10	876717
12H	SAE 12	566113

See section J for housing details.

*Light duty housing

8 Connector types

Blank - No coil

G - ISO 4400 DIN 43650

W - Flying lead

N - Deutsch (DC only)

Y - Amp JR (DC only)

D - Metripack 150 male (DC only)

J - Metripack 280 male (DC only)

E - Weather-Pack female

F - Weather-Pack male

For coil part numbers and dimensions see section C.

5 Manual override option

Blank - No manual override

M - Knob type

R - Cable type

For valve dimensions with manual override option installed see page A-980.

7 Voltage rating

00 - No coil

12D - 12VDC

24D - 24VDC

115A - 115VAC

230A - 230VAC

12B - 12VDC/w diode*

24B - 24VDC/w diode*

*Optional arc suppression diode.

9 Special features

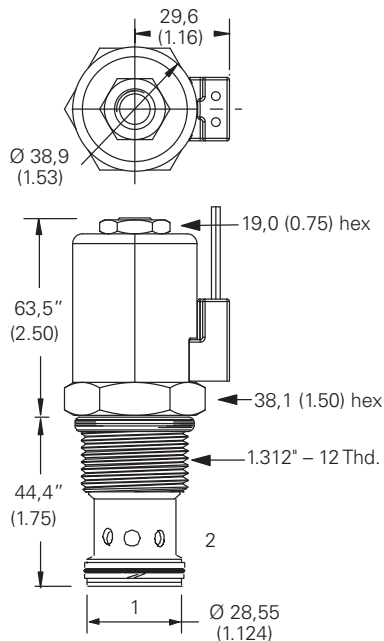
00 - None

(Only required if valve has special features, omitted if "00.")

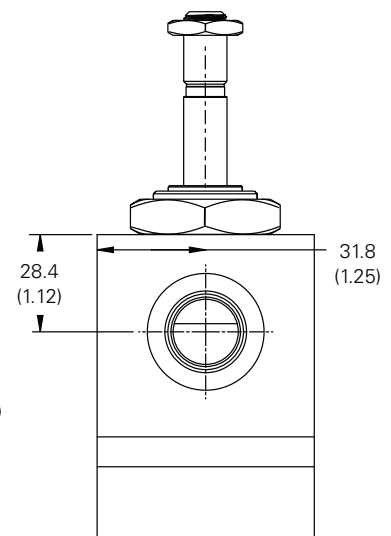
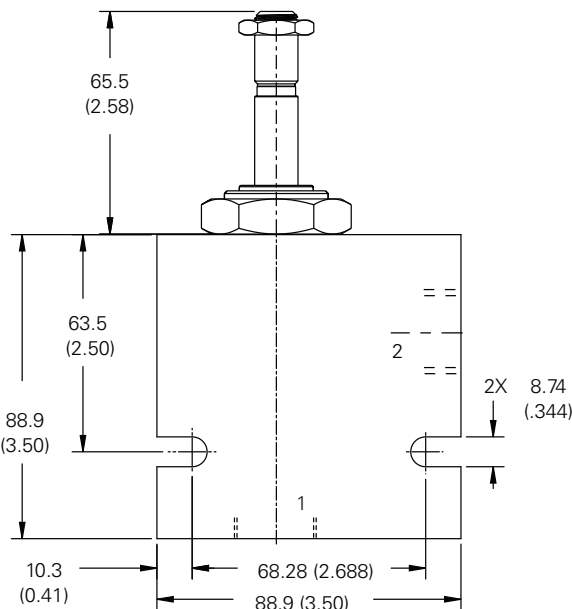
Notes: Use J series, 23 W coils with this solenoid valve.

Dimensions - mm (inch)

Cartridge only



Installation drawings



Where measurements are critical request certified drawings. We reserve the right to change specifications without notice.