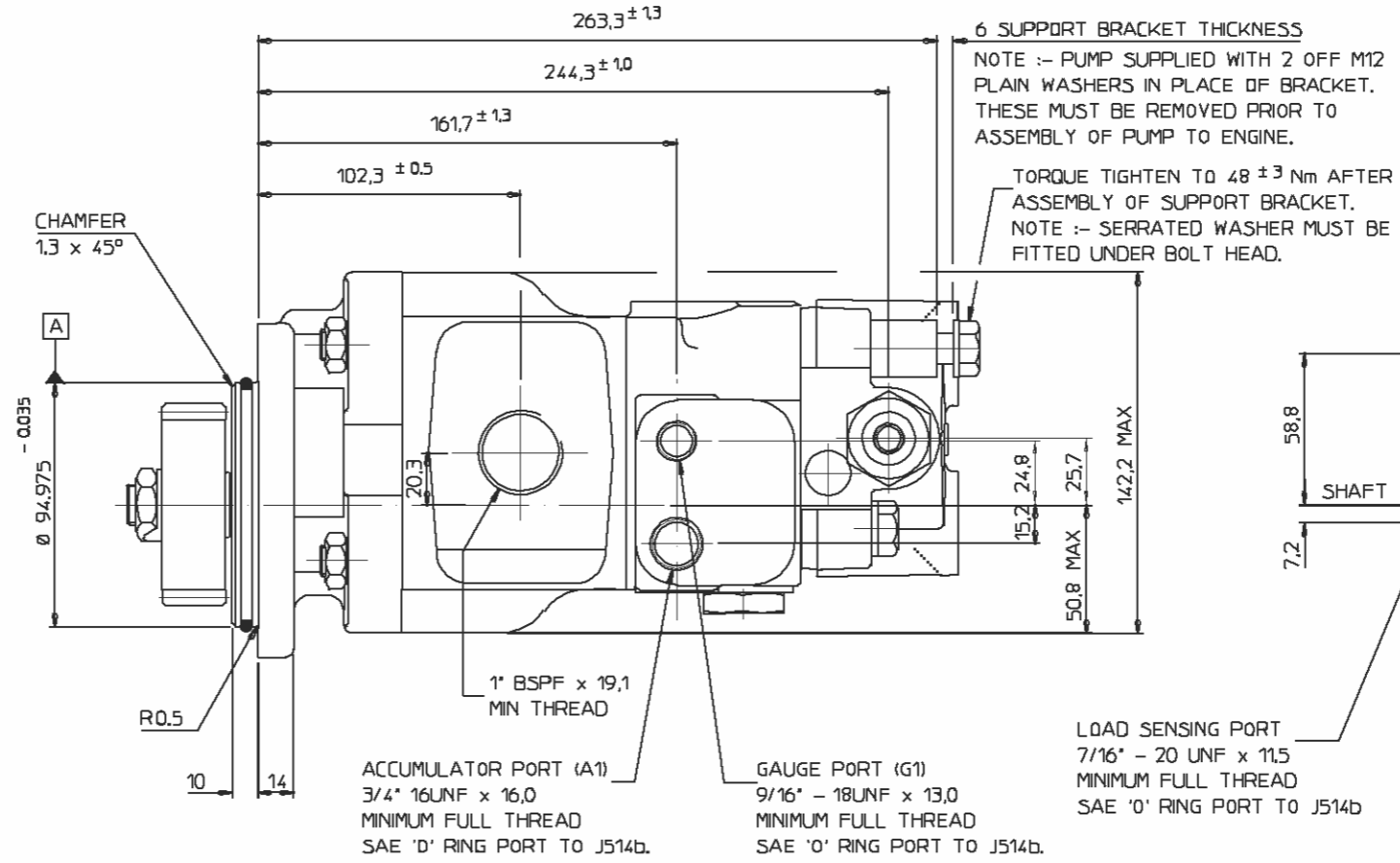
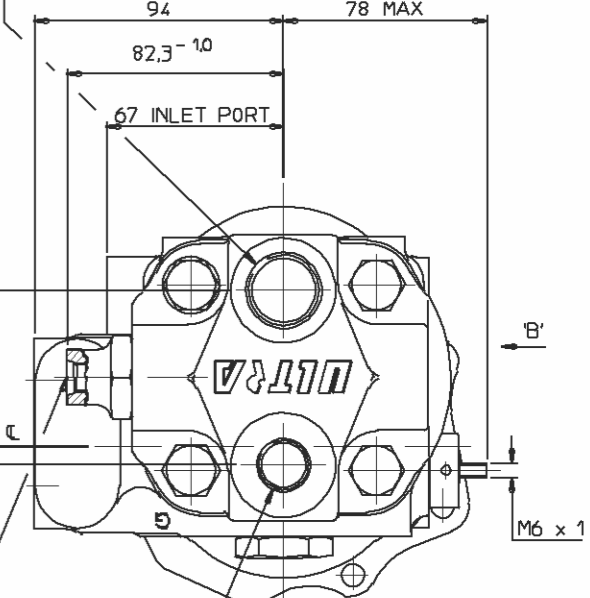


HOLE PATTERN AND FLANGE PROFILE TO SUIT PERKINS 1000 SERIES ENGINE



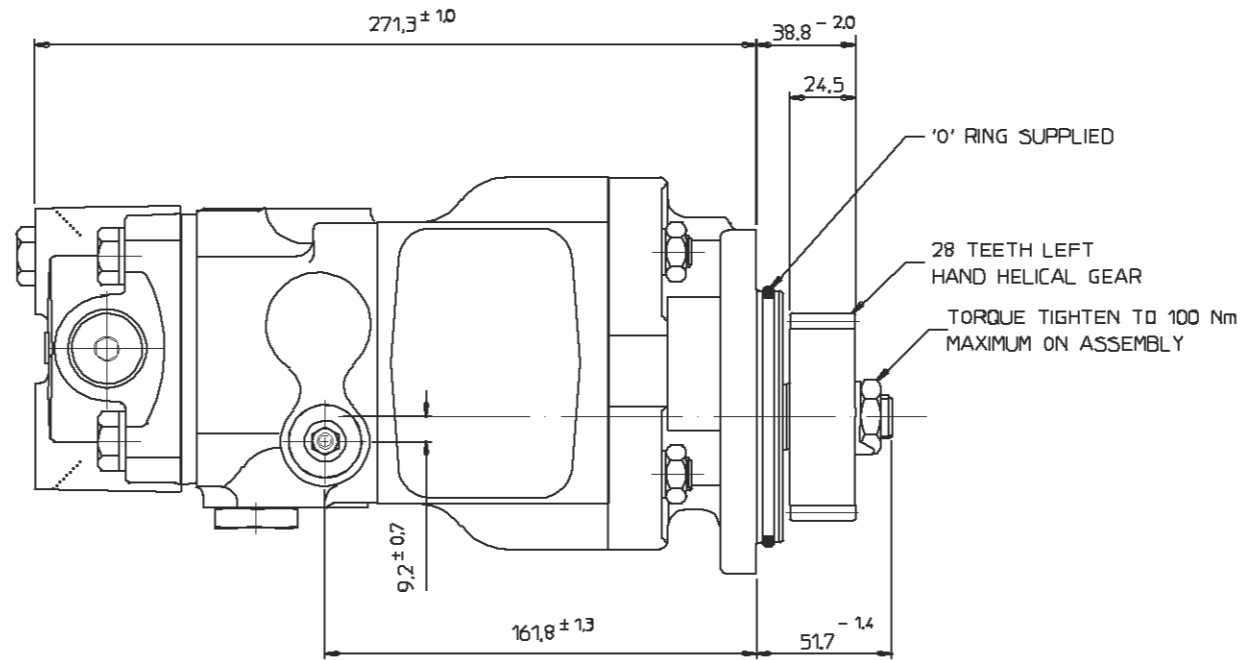
- ACCUMULATOR PORT (A1) 3/4" 16UNF x 16.0 MINIMUM FULL THREAD SAE 'O' RING PORT TO J514b.
- GAUGE PORT (G1) 9/16" - 18UNF x 13.0 MINIMUM FULL THREAD SAE 'O' RING PORT TO J514b.
- LOAD SENSING PORT 7/16" - 20 UNF x 11.5 MINIMUM FULL THREAD SAE 'O' RING PORT TO J514b

SECONDARY PORT (EF)
1 1/16" - 12 UNF x 16.0
MINIMUM FULL THREAD
SAE 'O' RING BOSS TO J514b



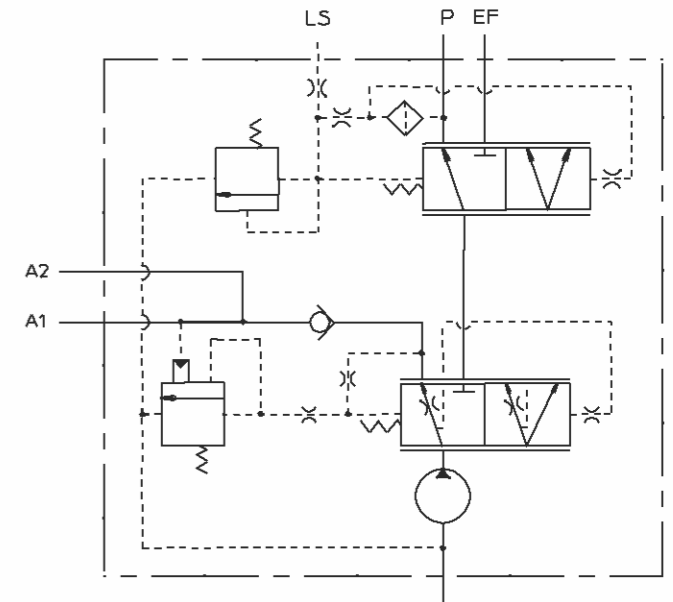
| PUMP DATA | |
|---|--|
| PUMP TYPE | 2PR037 |
| THEORETICAL DISPLACEMENT | 37.0 cc/rev (2.26 cu in/rev) |
| MAXIMUM CONTINUOUS PRESSURE P1 | 210 bar (3045 psi) |
| MAXIMUM SPEED AT PRESSURE P1 | 3000 rev/min |
| MINIMUM SPEED AT PRESSURE P1 | 500 rev/min |
| ROTATION WHEN VIEWED ON END OF DRIVESHAFT | CLOCKWISE |
| APPROX WEIGHT | kg (lb) |
| OPERATING TEMPERATURE RANGE | CONTINUOUS 0°C TO 80°C COLD START -20°C MAX INTERMITTENT 100°C |
| SHAFT SEAL TYPE | DOUBLE NITRILE |

FOR OPERATING CONDITIONS OUTSIDE THOSE STATED PLEASE CONSULT ULTRA HYDRAULICS LIMITED TECHNICAL SALES DEPARTMENT. WITH EXCEPTION OF DRIVESHAFT, FLANGE SPIGOT AND MOUNTING FACE, PLUS AREAS AROUND PORTS, ALL SURFACES ARE PAINTED WITH BLACK SUNCORITE 528.



VIEW ON ARROW 'B'

CIRCUIT DIAGRAM FOR PUMP WITH ACCUMULATOR CHARGE VALVE PLUS LOAD SENSING PRIORITY VALVE & DYNAMIC LOAD SENSING SIGNAL



- PRIORITY RELIEF 130 bar (1885 psi)
- CONTROL PRESSURE 10.4 bar (151 psi)
- CUT IN PRESSURE 63 bar (913.5 psi)
- CUT OUT PRESSURE 90 bar (1305 psi)
- ACCUMULATOR CHARGE FLOW 5 l/min.

| | |
|-----------------|---------------|
| USED ON | PRDTS ISSUE 3 |
| UNIT No. | |
| ASSY No. | |
| CHECKED | ASH |
| ENG APP. | ASH |
| PRCO APP. | |
| ISSUE No. | 11 |
| ISSUED ON | 5/3/33 |
| DRAWN | AIE |
| DATE | 22-Feb-94 |
| CIRCUIT DIAGRAM | - CORRECTED. |
| ISSUE No. | 2 |
| ISSUED ON | 14/11/92 |
| DRAWN | CW |
| DATE | 19-May-94 |

| | | |
|---|--|------------------------|
| Part No. | 5 3 0 9 3 | THIRD ANGLE PROJECTION |
| TITLE | 1994 INSTALLATION OF 2PR037C PUMP WITH SACV AND LSPV | |
| UNLESS OTHERWISE STATED ALL DIMENSIONS IN MILLIMETRES / INCHES | | |
| © ULTRA HYDRAULICS LTD. THIS DRAWING IS THE PROPERTY OF ULTRA HYDRAULICS LIMITED AND IS CONFIDENTIAL. IT IS ISSUED SUBJECT TO THE CONDITIONS THAT - | | |
| IF INFORMATION OR ANY PART CONTAINED IN IT SHALL NOT BE DISCLOSED IN ANY FORM TO A THIRD PARTY. | | |
| IF IT OR ANY PART OF IT SHALL NOT BE REPRODUCED IN ANY FORM. | | |
| ULTRA HYDRAULICS LTD. CHELTENHAM | | SIZE A0 |