

Replace the membrane board on XSDrive

6F & Joystick 387-3136

4F 387-4447



Replace the membrane board on XSDrive

Note! Make sure you are ESD-protected before commencing any work on the XSDrive!



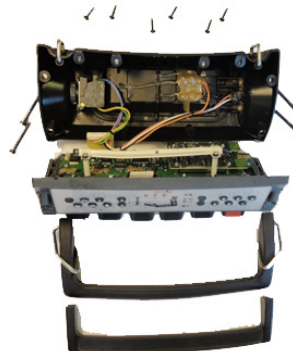
1. Remove battery from the XSDrive.①
2. Use a 4mm hex key to unscrew the 2 screws ② holding the lower protective bow and the two screws ③ holding the upper protective bow.



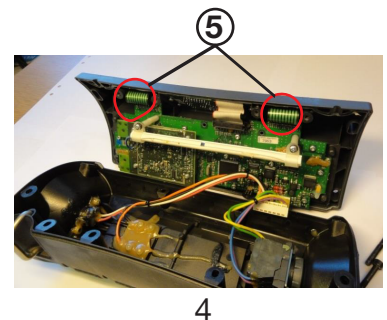
3. Use a 3 mm hex key to unscrew the 6 screws and separate the cover from the body ④



4. Loosen the two outer cables from the circuit board.⑤



5. Use a knife to loosen the membrane board from the cover and remove it gently.



6. Use the knife to remove the button board, gently. Be careful not to damage the flat cable.



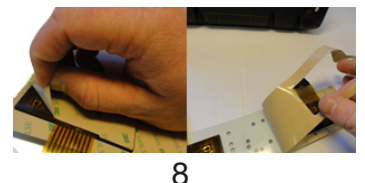
7. Clean the surface with a cloth lightly soaked in chemically pure gasoline or alcohol. Make sure there is no old adhesive left. Be extra careful not to leave any stains of Vaseline, oils or fat on the surface!



8. Remove the protective film from the back of the new membrane board. Be careful not to touch the adhesive.



9. Place flat cables into the holes.



10. Gently fasten the membrane board onto the surface. **Be careful, the membrane board need to be aligned from the start**, it cannot be removed from the surface again without damaging it.



11. Fasten the two flat cables to the circuit board. Apply Vaseline on the contact if needed.



12. Re-assemble the cover: 6 screws ④ with a tightening torque of 2.5 Nm (+-0.2).

13. Re-assemble the screws ②③ holding the lower and upper protective bow with a tightening torque of 2.5 Nm(+0.2)).



14. Place the battery. ①

11