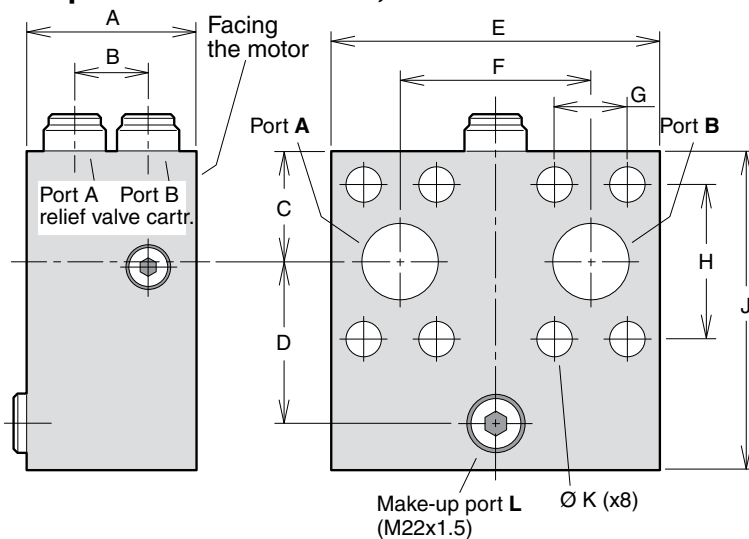


SV	1		-		/		-	00	-	H	F	-	A
Valve function	Version	Port size		Pressure setting			Serial number		Seals	Threads (port L)		Techn. status	
Pressure relief valve													
Code Version												Code Techn. status	
1												A	Factory assigned
Code Port size (SAE 6000 psi)										Code Threads (port L)			
1		3/4"	F12-30, -40, -60							F	Metric		
2		1"	F12-80, -90										
Code Pressure settings (A/B ports) [bar]									Code Seals				
									H	Nitrile rubber			
Code Serial number													
00													Factory assigned

SV pressure relief valve, Dimensions



Dim. [mm]	SV11	SV12
A	71	73
B	31	31
C	36	41
D	47	51
E	130	127
F	66	75
G	23.8	27.8
H	50.8	57.2
J	99	109
K	11	13
Weight [kg]	4.2	5.0

MV Anti-cavitation valve / make up valve block

The make-up valve block for series F12 motors is designed to prevent cavitation inside motor by directing flow to inlet port from return side.

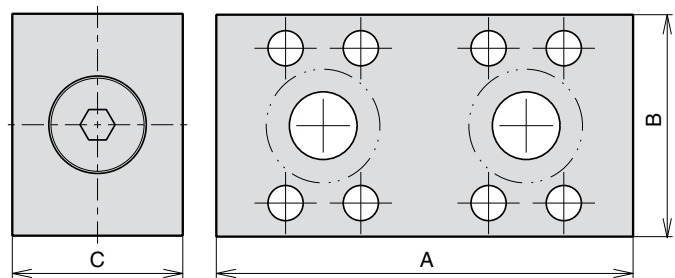
The manifold is uni-directional but can be installed in either motor direction

The valve block installs directly on the motor port flange, and is available in 2 sizes:

The valve block consists of one check valve for make-up function.

The make-up valve opens at a pressure of approx. 0,2 bar.

NOTE: The valve block includes main port O-rings (facing the motor) but no mounting screws.



Size	For Motor	A	B	C	Order number
1"	F12-80, -90	154	82	63	3720140
1 1/2"	F12-152, -162, -182, -250	208.5	105	47	3784195

