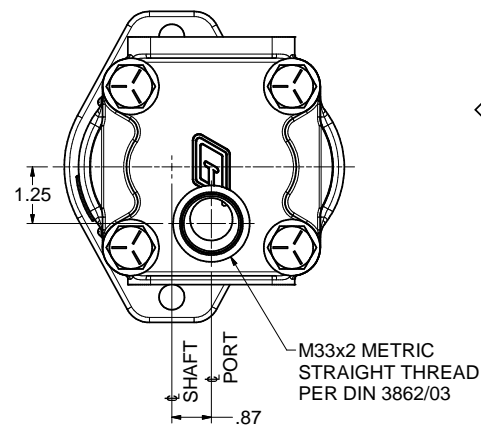
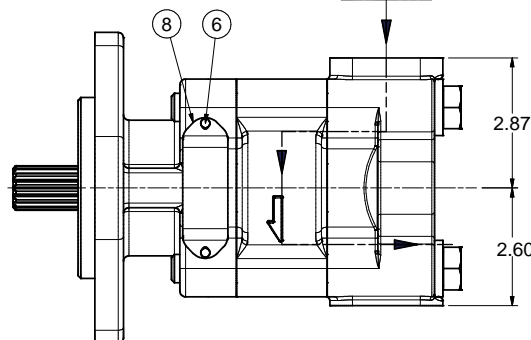


1 1/4" METRIC SPLIT FLANGE
M10x1.5 THREAD
1.12 DEEP - 4 HOLES

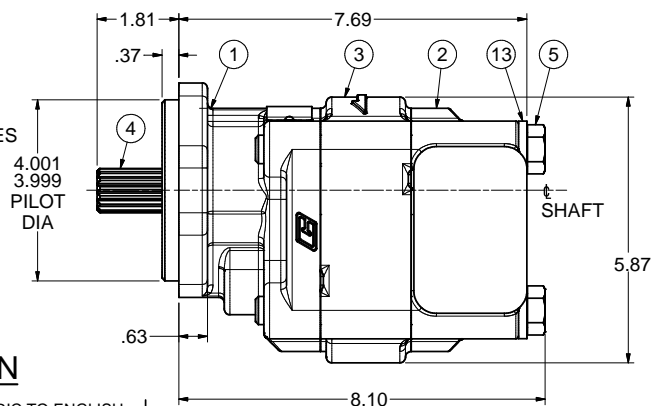
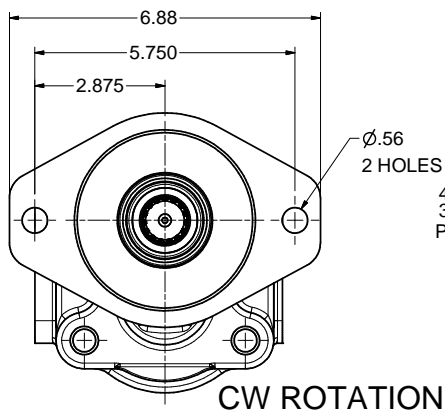


NOTES:

1 FOR ASSEMBLY INSTRUCTIONS SEE DWG. "330-B1"
"P330 PUMP ASSEMBLY INSTRUCTIONS."

1D FOR REPAIRS USE
SOFT GOODS KIT
391 1842 300

NOTE:
THIS UNIT ASSEMBLED WITH
VITON SEALS
DO NOT SUBSTITUTE



13	391 3784 028	4	WASHER
12	391 2885 065	2	SEAL, CHAN
11	391 2883 104	1	SEAL, LIP
10	391 2881 045	2	SEAL, O-R
9	391 2185 069	2	THRPL
8	391 2181 999	1	NAME PLATE
7	391 2082 032	4	PIN, DOWEL
6	391 1432 004	2	SCREW, DRIVE
5	391 1401 076	4	CAPSCREW
4	324 2915 140	1	SET, GEAR SHAFT
3	324 8115 100	1	HOUSING, GEAR
2	324 3133 913	1	HOUSING, PEC
1	324 5123 201	1	HOUSING, SEC
ITEM	PART NUMBER	QTY	DESCRIPTION

THIS DOCUMENT CONTAINS INFORMATION THAT IS CONFIDENTIAL AND PROPRIETARY TO PARKER-HANNIFIN CORPORATION ("PARKER"). THIS DOCUMENT IS FURNISHED ON THE UNDERSTANDING THAT THE DOCUMENT AND THE INFORMATION IT CONTAINS WILL NOT BE COPIED OR DISCLOSED TO OTHERS OR USED FOR ANY PURPOSE OTHER THAN CONDUCTING BUSINESS WITH PARKER, AND WILL BE RETURNED AND ALL FURTHER USE DISCONTINUED UPON REQUEST BY PARKER. ALL RIGHTS RESERVED.

Parker-Hannifin Corp.
Gear Pump Division
Greenville, NC 28086
USA

PGPE330A197**AB*15-98		Tolerances Unless Otherwise Specified } = Ref. DIMENSIONS		DR. BY TLE	DATE 19Apr13	CH. BY MJH	DATE 22Apr13
MATERIAL	REV LEVEL	REV DATE	WT.	324 9110 494			
H.E.-STD:	19Apr13	38.16	DIMENSIONS ARE INCH				© 2013 Parker-Hannifin Corporation

1F CONVERTED DIM'S FROM METRIC TO ENGLISH
1E REMOVED SPECIAL PAINT REQUIREMENTS
1D ADDED "SOFT GOODS KIT" NOTE
1C ITEM #2, 324 3133 913, WAS 324 3133 908
1B CODE "PGPE330A197**AB*15-98"
WAS "PGPE330A197**AB15-98"
1A REDRAWN, SUPERSEDES DWG DATED 21Aug06
LAST REV.NO. 06-09-302, DATED 28Sep06

1H ADDED "VITON SEALS - DO NOT SUBSTITUTE" NOTE
1G ITEM #12, 391 2885 065, WAS 2-PIECE
CHANNEL SEALS, 391 2883 166 AND 167

PARKER
GERMANY
AZ 103085

EXP NO.
FIRST USED
13-04-4026
324 9110 494

SYM. REVISIONS 19Apr13 TLE 13-04-4026

**CURRENT REVISION LEVEL: C EFFECTIVE 15-Dec-13
PER REVISION ALIGNMENT PROJECT PM-22332**