

The spool is the most important link between the actions of the operator and the movement of the controlled function. Parker therefore goes to great lengths to optimise spools for different flows, load conditions, functions and applications. Since this is a process of continuous development work, new spools are being introduced all the time. For this reason, the many different spools available are not detailed in this catalogue. Parker's computerised specification program will generate proposals for suitable spools for the application and functions of the hydraulic system in your machine.

Spool function [60]

Spools are divided into different groups, depending on their basic function.

- D** Double-acting spool. Blocked in the neutral position.
- EA** Single-acting spool. Blocked in the neutral position and service port B blocked.
- EB** Single-acting spool. Blocked in the neutral position and service port A blocked.
- M** Double-acting spool. Service ports connected to tank (float position) in neutral.
- CA** Regenerative spool for rapid feeding of a cylinder, or for flow saving. The large side of the cylinder is always connected to service port A.

Certain spools have been equipped with drainage from service port to tank when the spool is in neutral. Drainage (approx. 2 mm²) serves to prevent pressure build-up in the service port. Such drainage is used primarily in combination with different types of external overcentre valve. The spool designation is affected as follows: A lower-case letter is suffixed to the usual spool designation indicating function, e.g. the D-spool becomes a Da-spool to indicate drainage from service-port A to tank.

- a** Drainage of service-port A to tank
- b** Drainage of service-port B to tank
- m** Drainage of service ports A and B to tank

Spool designation [69]

Each spool version is imprinted with an alphabetical code to facilitate identification during tuning or servicing in the field.

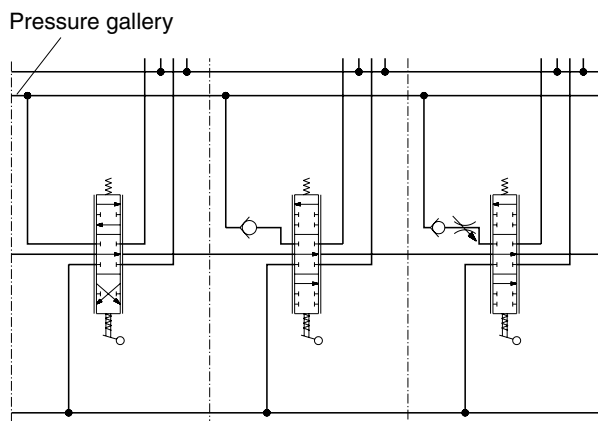
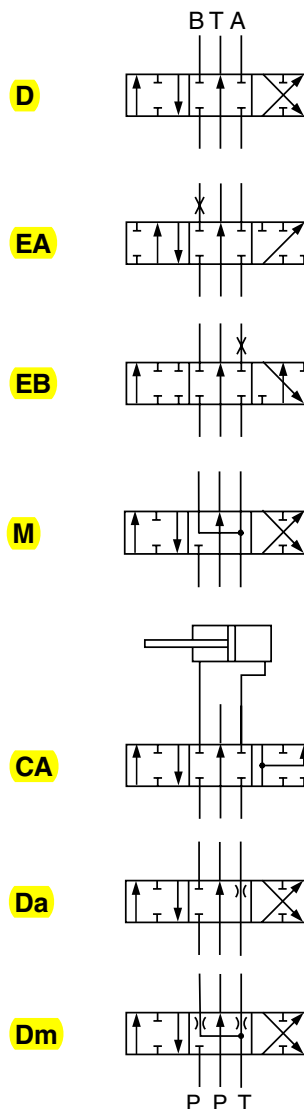
Please note that LS spools have a different coding system. All LS spool have "ls" after the spool codes leading letter e.g. a double acting spool, normal code D, would become Dls and for a single acting spool, normal code EA, would become EAls. For spool selection including drainage, the drainage letter is placed at the end of the code e.g. for a single acting spool with drainage from work port A, the code would be EAlsa.

Options in the spool section

Options in the pressure gallery [66]

The spool section's pressure gallery can be fitted with different accessories to give the best system construction.

- X** Without load-hold check valve.
- N** Load-hold check valve to prevent undesirable sinking of a heavy load while a light load is operated. Normal version.
- MS** Load-hold check valve equipped with adjustment screw for restricting flow to consumer.



Pressure gallery open (X) in first section, fitted with check valve (N) in second section and fitted with check valve and adjustment screw (MS) in third section.