

**Mid-inlet section [90]**

There are two connections in the mid-inlet section. They can be connected in different ways, depending on the choice of options.

The main pressure relief valve (see page 17) can/or should be fitted in the mid-inlet, depending on the way in which the system is constructed. See connection alternatives overleaf.

Several mid-inlets can be placed in one and the same valve to give optimum system construction.

**The mid-inlet section can only be selected for the F130CF**

**Options, mid-inlet [93]**

- C2** Mid-inlet without function. Used if you plan to convert mid-inlet to C3 or C5 later on.
- C3** Mid-inlet with series connection that gives priority to upstream sections. Intended for single or multi-pump operation. Flow not used in sections upstream of the mid-inlet is added to the incoming flow in the mid-inlet.
- C5** Mid-inlet without flow summation. Intended for multi-pump operation. Valve with C5 mid-inlet functions as two separate valves with a common tank connection. If an extra tank line is connected to port M1, the pump-to-tank pressure drop will be reduced.

**Main pressure relief valve [94]**

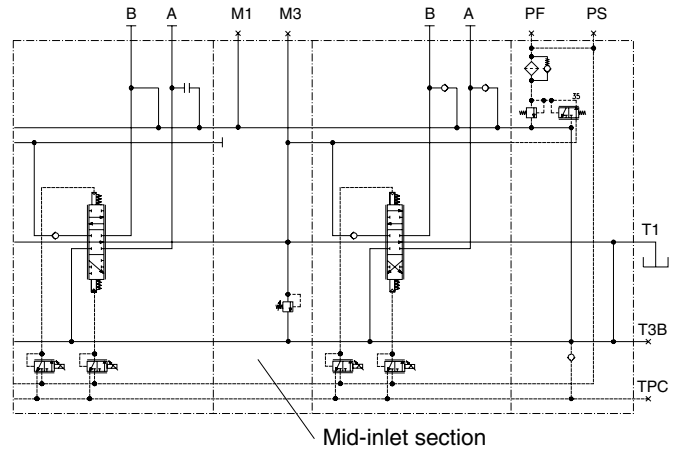
The mid-inlet can be fitted with the same main pressure relief valve as is fitted in the standard inlet. For further information and technical data, please see Inlet section [16] on page 14.

In systems in which several different pressure levels are required, main pressure relief valves can be fitted to give different pressure levels before and after the mid-inlet.

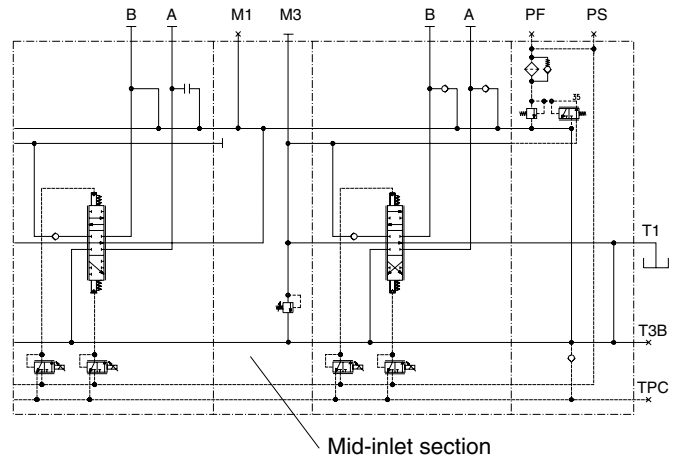
- PS** Adjustable main pressure relief valve. Delivered with opening pressure pre-set as per specification.
- PB** Adjustable main pressure relief valve. Delivered pre-set and factory-sealed.
- Y** Without pressure relief valve.

**Pressure setting [98]**

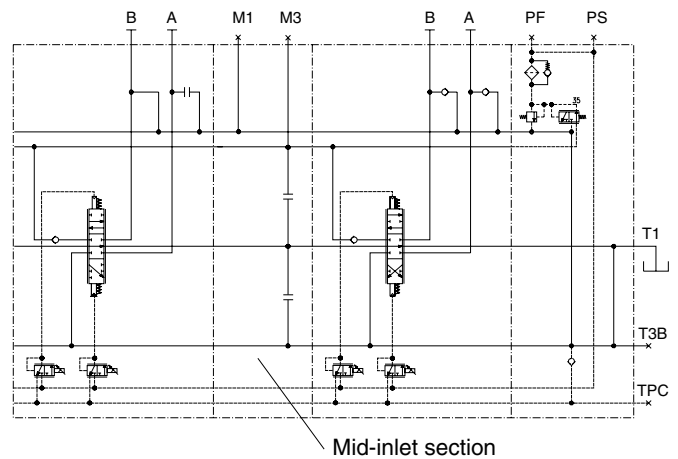
- Max. 250 bar for grey-iron version of valve.
- Max. 320 bar for nodular-iron version of valve.



*Mid-inlet, C3. Used in multi-pump systems and when upstream sections are to have priority over flow delivered by the pump connected to the inlet section [15]*



*Mid-inlet, C5. Used in multi-pump systems. Valve functions as two separate valves, but with common tank gallery.*



*Mid-inlet C2 Used when you want to rebuild the mid-inlet to a C3 or C5 later on.*