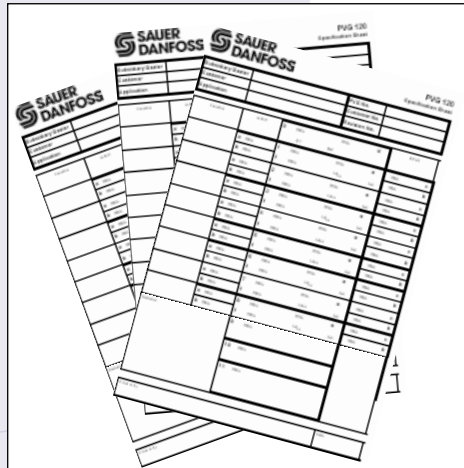
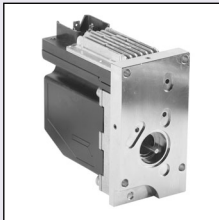
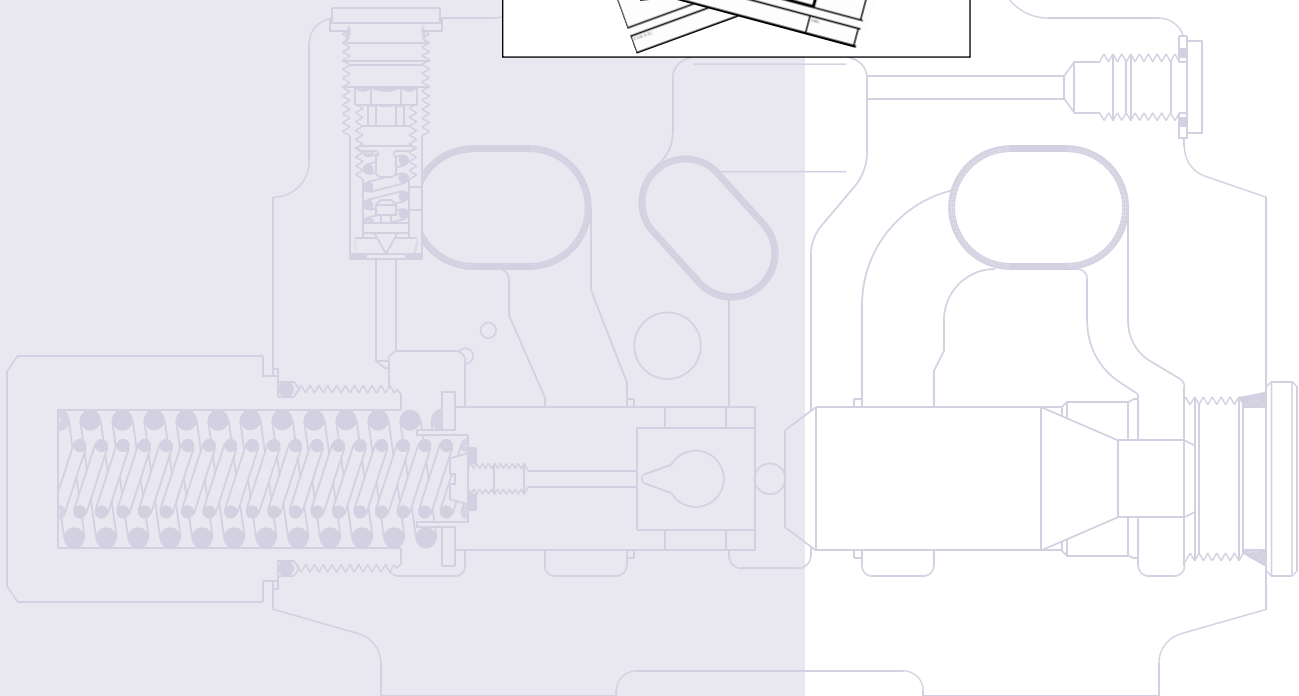


Specifications



Technical drawing of the SAUER DANFOSS PVG 120 proportional valve, showing the front view and a detailed table of specifications. The table includes columns for various parameters such as flow rate, pressure, and electrical characteristics.

SAUER DANFOSS		SAUER DANFOSS		PVG 120	
Electromechanical Valve		Electromechanical Valve		Electromechanical Valve	
Flow rate	100 l/min	Flow rate	100 l/min	Flow rate	100 l/min
Pressure	350 bar	Pressure	350 bar	Pressure	350 bar
Electrical power	100 W	Electrical power	100 W	Electrical power	100 W
Flow rate	100 l/min	Flow rate	100 l/min	Flow rate	100 l/min
Pressure	350 bar	Pressure	350 bar	Pressure	350 bar
Electrical power	100 W	Electrical power	100 W	Electrical power	100 W



ORDERING GUIDANCE

The module selection chart and the order form are both divided into fields.

Each module has its own field:

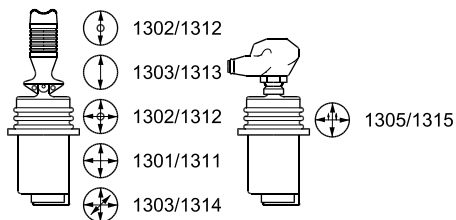
- 0: PVP, pump side modules
- d: PVPD, PVPH and PVPE, accessory modules
- 1-8: PVB, basic modules
- e: PVBS, main spools
- f: PVBP, PVBR, PVBU and PVBC, accessory modules
- a: PVM, mechanical actuation
- c: PVMD, cover for mechanical operation
PVH, cover for hydraulic operation
PVEO and PVEH, electrical actuations
- b: PVL P, shock and suction valve
PVLA, suction valve
- 9-10: PVT, tank side module
- 11: PVAS, assembly kit

Please state:

- Code numbers of all modules required in the appropriate field
- Required setting (p) for pump side module in field 0
- Required setting of $LS_{A/B}$ pressure relief valves, if accessory module PVBR is ordered.

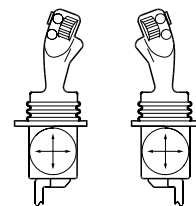
REMOTE CONTROL UNITS

- PVRE, electrical control unit, 162F...



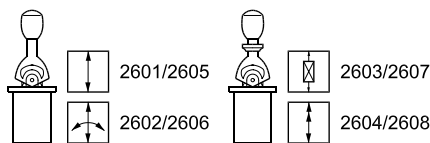
155B566.10

- Prof 1, 162F...



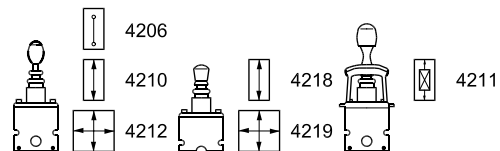
162B73.10

- PVREL, electrical control unit, 155U...



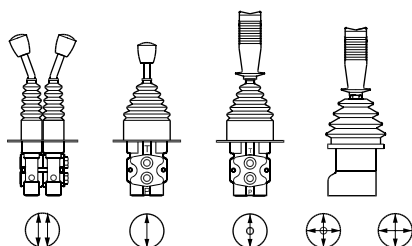
155B486.10

- PVRES, electrical control unit, 155B...



155B485.10

- PVRH, hydraulic control unit, 155N...



155B567.10

PVB, high basic module

	SAE flange	O-ring Boss	Metric flange	Weight kg [lb]
Facilities for shock valves AB	155G6007	155G6006	155G6005	10.2 [22.5]

PVB, low basic module

	SAE flange	O-ring Boss	Metric flange	Weight kg [lb]
No facilities for shock valves AB	155G6016	155G6015	155G6014	8.9 [19.6]

Accessory modules for PVB

		Weight kg [lb]
Plug, PVBP	155G6081	0.4 [0.9]
LS _{A/B} press. relief valve, PVBR	155G6080	0.4 [0.9]
External LS connection, PVBC	155G6082	0.4 [0.9]
Module for oil flow > 180 l/min [47.6 US gal/min], PVBU	155G6035	0.4 [0.9]

PVBS, mechanical actuation

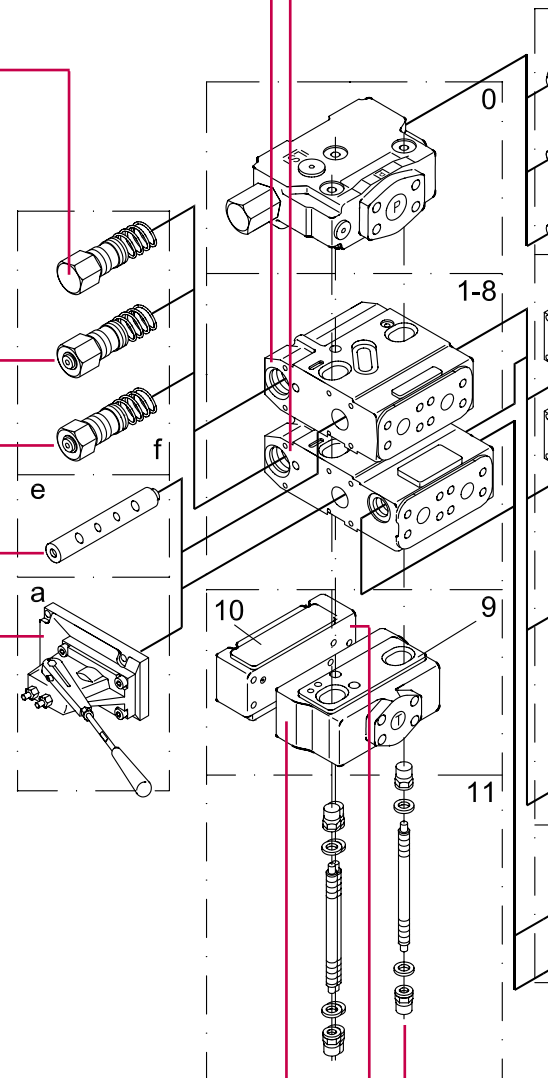
Oil flow	A	B	C	D
	65 [17.2]	95 [25.1]	130 [34.3]	180 [47.6]
Symbol				
	155G6452	155G6454	155G6456	155G6458
		155G6464	155G6466	155G6468
			155G6476	155G6478
Weight (kg)	0.35	0.35	0.35	0.35
[lb]	[0.8]	[0.8]	[0.8]	[0.8]

PVM, mechanical actuation

PVM + PVMD or PVM + PVE	155G3040 155G3041	22.5° 37.5°
PVM + PVH	155G3050 155G3051	22.5° 37.5°
Weight	kg [lb]	0.5 [1.1]

PVT, tank side module

	SAE flange	O-ring Boss	Metric flange	Weight kg [lb]
Upper part excl. LX connection	155G7022	155G7021	155G7020	4.6 [10.1]
Upper part incl. LX connection	155G7025	155G7024	155G7023	4.6 [10.1]
Lower part incl. pilot oil supply PVE for		155G7042	155G7040	4.4 [9.7]
Lower part excl. pilot oil supply for PVE		155G7062	155G7060	4.4 [9.7]

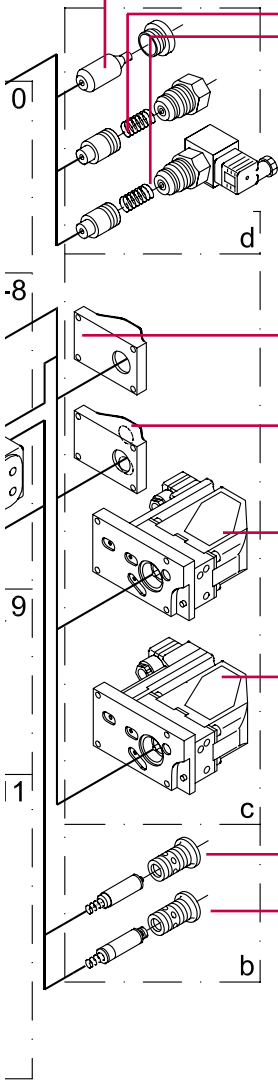


PVP, pump side module

		O-ring Boss	SAE flange	Metric flange	Weight kg [lb]
Open centre	Excl. PVPD, PVPH, PVPE	155G5023	155G5037	155G5021	10.0 [22.1]
	For PVB-oil flow > 180 l/min [47.6 US gal/min] Excl. PVPD, PVPH, PVPE	155G5028	155G5029	155G5027	10.0 [22.1]
Closed centre	Incl. pressure relief valve and plug PVPD	155G5022	155G5038	155G5020	10.2 [22.5]
	Excl. pressure relief valve	155G5031	155G5032	155G5030	11.0 [24.3]

Accessory modules for open centre PVP

		Weight kg [lb]
Plug, PVPD	155G5041	0.4 [0.9]
Hydraulic relief valve, PVEH	155G5061	0.5 [1.1]
Electrical relief valve, PVPE	12 V	0.7 [1.5]
	24 V	0.7 [1.5]



PVMD, cover for PVM

	Weight kg [lb]
155G4061	0.3 [0.7]

PVH, cover for PVRH

	Weight kg [lb]
155G4021	0.4 [0.9]
155G4022	0.4 [0.9]

Electrical actuation PVE

	PVEH	PVEH	PVEO
Fault monitoring	Active	Passive	-
12 V	155G4072	155G4172	155G4272
24 V	155G4074	155G4174	155G4274
Weight	(kg)	1.25	1.25
	[lb]	[2.76]	[2.76]

PVLA suction valve A/B

	Weight kg [lb]
155G1065	0.2 [0.4]

PVLP, shock and suction valve A/B

Pressure setting		
(bar)	[psi]	
50	725	155G0050
75	1100	155G0075
100	1450	155G0100
125	1800	155G0125
150	2200	155G0150
175	2550	155G0175
200	2900	155G0200
225	3250	155G0225
250	3650	155G0250
275	4000	155G0275
300	4350	155G0300
325	4700	155G0325
350	5100	155G0350
375	5400	155G0375
400	5800	155G0400
Weight	(kg)	0.175
	[lb]	[0.386]

155B352.10

PVAS, assembly kit

PVB's	1	2	3	4	5	6	7	8
	155G8031	155G8032	155G8033	155G8034	155G8035	155G8036	155G8037	155G8038
Weight	(kg)	0.8	1.0	1.1	1.2	1.4	1.7	1.9
	[lb]	[1.8]	[2.2]	[2.4]	[2.6]	[3.1]	[3.7]	[4.2]



PVG 120 Proportional Valve
Specification
Order specification

ORDER FORM

PVG 120
Specification Sheet

Subsidiary/Dealer		PVG No.	
Customer		Customer No.	
Application		Revision No.	

Function	A-Port	0	155G	155G	d	B-Port
			p =	bar		
	a 155G	1	155G	155G	e	155G c
	b 155G	f	155G	LS _{AB}	bar	155G b
	a 155G	2	155G	155G	e	155G c
	b 155G	f	155G	LS _{AB}	bar	155G b
	a 155G	3	155G	155G	e	155G c
	b 155G	f	155G	LS _{AB}	bar	155G b
	a 155G	4	155G	155G	e	155G c
	b 155G	f	155G	LS _{AB}	bar	155G b
	a 155G	5	155G	155G	e	155G c
	b 155G	f	155G	LS _{AB}	bar	155G b
	a 155G	6	155G	155G	e	155G c
	b 155G	f	155G	LS _{AB}	bar	155G b
	a 155G	7	155G	155G	e	155G c
	b 155G	f	155G	LS _{AB}	bar	155G b
	a 155G	8	155G	155G	e	155G c
	b 155G	f	155G	LS _{AB}	bar	155G b
Remarks:		9	155G			
		10	155G			
		11	155G			

Filled in by	Date
--------------	------

Reordering

The space at the top right-hand corner of the form is for Sauer-Danfoss to fill in. The code number for the whole of the specified valve group (PVG No.) is entered here. In the event of a repeat order all you have to do is enter the number Sauer-Danfoss has given on the initial confirmation of order.



OUR PRODUCTS

Hydrostatic transmissions
Hydraulic power steering
Electric power steering
Closed and open circuit axial piston pumps and motors
Gear pumps and motors
Bent axis motors
Radial piston motors
Orbital motors
Transit mixer drives
Planetary compact gears
Proportional valves
Directional spool valves
Cartridge valves
Hydraulic integrated circuits
Hydrostatic transaxles
Integrated systems
Fan drive systems
Electrohydraulic controls
Digital electronics and software
Battery powered inverter
Sensors

Sauer-Danfoss Hydraulic Power Systems – Market Leaders Worldwide

Sauer-Danfoss is a comprehensive supplier providing complete systems to the global mobile market.

Sauer-Danfoss serves markets such as agriculture, construction, road building, material handling, municipal, forestry, turf care, and many others.

We offer our customers optimum solutions for their needs and develop new products and systems in close cooperation and partnership with them.

Sauer-Danfoss specializes in integrating a full range of system components to provide vehicle designers with the most advanced total system design.

Sauer-Danfoss provides comprehensive worldwide service for its products through an extensive network of Authorized Service Centers strategically located in all parts of the world.

Sauer-Danfoss (US) Company
2800 East 13th Street
Ames, IA 50010, USA
Phone: +1 515 239-6000, Fax: +1 515 239-6618

Sauer-Danfoss (Neumünster) GmbH & Co. OHG
Postfach 2460, D-24531 Neumünster
Krokamp 35, D-24539 Neumünster, Germany
Phone: +49 4321 871-0, Fax: +49 4321 871-122

Sauer-Danfoss (Nordborg) A/S
DK-6430 Nordborg, Denmark
Phone: +45 7488 4444, Fax: +45 7488 4400