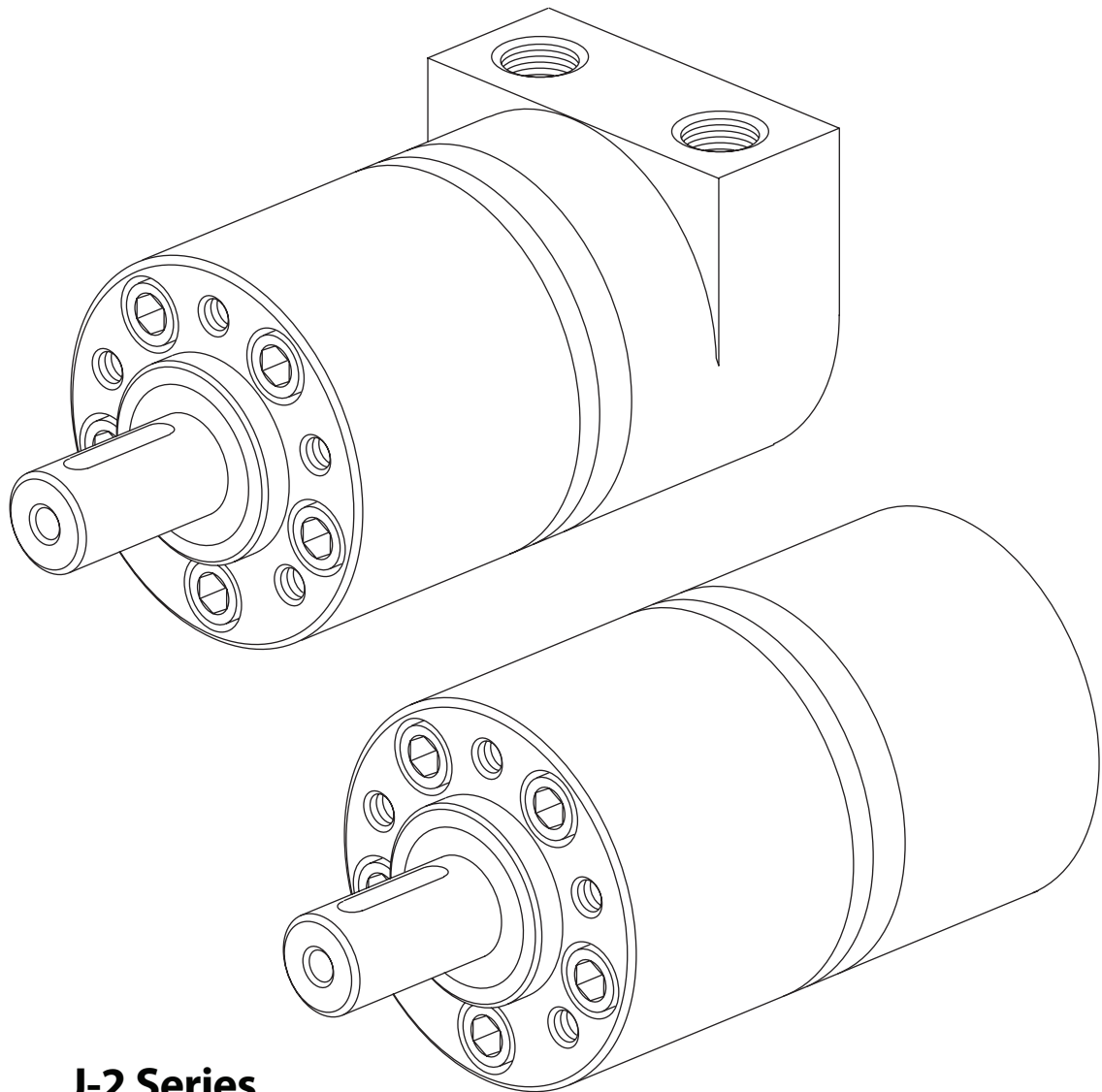


Danfoss Char-Lynn®

General Purpose Hydraulic Motors



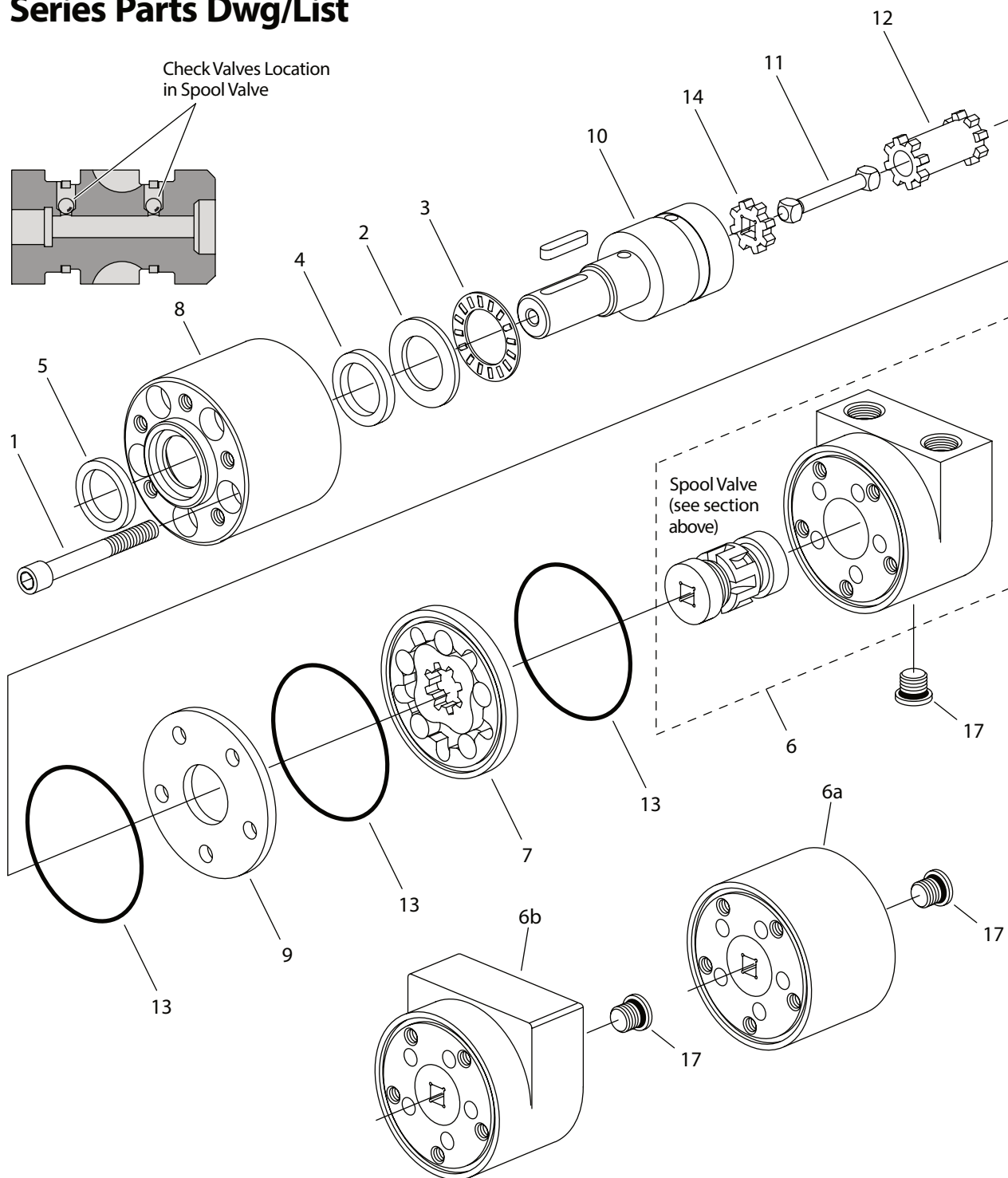
Parts Manual



J-2 Series Geroler Motor

002

J-2 Series Parts Dwg/List



Displacement cm ³ /r [in ³ /r]	Item Ref. No. 1 Screw, Cap Internal Hex	Length mm [inch]	Ref. No. 7 Geroler®	Width mm [inch]	Ref. No. 11 Spool Drive	Length mm [inch]	Ref. No. 12 Drive	Length mm [inch]
8,2 [.50]	16148-422	57,2 [2.25]	201404-001	5,31 [.209]	23016-001	46,2 [1.82]	23017-001	32,39 [1.275]
12,9 [.79]	16148-424	64,0 [2.50]	201404-002	8,38 [.330]	23016-002	49,0 [1.93]	23017-002	35,48 [1.397]
19,8 [1.21]	16148-426	69,9 [2.75]	201404-003	12,83 [.505]	23016-003	53,8 [2.12]	23017-003	40,03 [1.576]
31,6 [1.93]	16148-430	76,0 [3.00]	201404-004	20,47 [.806]	23016-004	61,5 [2.42]	23017-004	47,68 [1.877]
50,0 [3.00]	16148-434	88,9 [3.50]	201404-005	31,83 [1.253]	23016-005	72,6 [2.86]	23017-005	58,19 [2.291]

J-2 Series Parts List

Ref. No.	Part Number	Description	Quantity
1	*	Screw, Cap Internal Hex	5
2	16241-C1220	Washer, Thrust	1
3	16241-1220	Bearing, Needle Thrust	1
X 4	14709-002	Seal, Pressure	1
X 5	9121-003	Seal, Exclusion	1
6	201333-004	Housing, Valve and Spool S/A (Side Ports — 9/16-18 UNF)	1
	201333-005	Housing, Valve and Spool S/A (Side Ports — G 3/8 (BSP))	1
	201333-006	Housing, Valve and Spool S/A (Side Ports — G 1/4 (BSP))	1
	201333-007	Housing, Valve and Spool S/A (Side Ports — M14)	1
6a	201333-001	Housing, Valve and Spool S/A (End Ports — 9/16-18 UNF)	1
	201333-002	Housing, Valve and Spool S/A (End Ports — G 1/4 (BSP))	1
	201333-003	Housing, Valve and Spool S/A (End Ports — M14)	1
6b	201333-009	Housing, Valve and Spool S/A (End Ports — G 3/8 (BSP))	1
7	*	Geroler*	1
8	201334-001	Housing, Bearing (1/4-28 UNF-2B Mounting Holes)	1
	201334-002	Housing, Bearing (M6 x 1 - 6H)	1
9	201353-000	Plate, Spacer	1
10	201354-001	Shaft, Output (5/8 Straight Keyed)	1
	14535-004	Key (5/8 Straight Keyed Shaft)	1
	201354-002	Shaft, Output (16 mm Straight Keyed)	1
	14530-001	Key (16 mm Straight Keyed Shaft)	1
	201354-007	Shaft, Output (5/8 Straight with Crosshole)	1
	201354-008	Shaft, Output (3/4 Tapered)	1
	16029-610	Key (.188 x .625 Woodruff Key)	1
	16267-108	Nut, Slotted (1/2-20 UNF x 11,2 [.44] Thick)	1
	201354-004	Shaft, Output (11/16 Straight Keyed)	1
	14535-004	Key (11/16 Straight Keyed Shaft)	1
	201354-005	Shaft, Output (18 mm Straight Keyed)	1
	14531-001	Key (18 mm Straight Keyed Shaft)	1
	201354-006	Shaft, Output (Involute Splined Metric)	1
11	*	Drive, Spool	1
12	*	Drive	1
X 13	16007-006	Seal, O-ring	3
14	23074-000	Spacer, Output Shaft	1
17	9072-002	Plug/O-ring S/A (3/8-24 UNF Drain Port)	1
X	250003-903	O-ring (for 3/8-24 UNF Plug)	1
	9237-007	Plug/O-ring S/A (M10 Drain Port)	1
X	14581-001	O-ring (for M10 Plug)	1
	9170-001	Plug/O-ring S/A (G 1/8 (BSP) Drain Port)	1
X	14591-001	Ring Seal (for G 1/8 (BSP) Plug)	1
	60552-000	2 Bolt Flange Kit (for 3/8 Mounting Bolts)	1
	60553-000	2 Bolt Flange Kit (for M8 Mounting Bolts)	1
	60580-000	Seal Kit — Contains Parts Indicated by X	

* See Chart on Page 2

How to Order Replacement Parts

Each Order Must Include the Following:

1. Product Number
2. Date Code
3. Part Name
4. Part Number
5. Quantity of Parts

For more detailed information contact your Danfoss representative.

- Specifications and performance data, Catalog No. 11-104.
- When servicing J Series motors refer to Repair Information No. 7-144. This repair manual lists tools required, and step by step disassembly and reassembly procedures.

Brand name

Char-Lynn®

Product number

XXX-XXXX-XXX

Serial number

XXXX

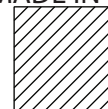
Date code

XXXX-XX-XX

Danfoss

MADE IN USA

Country of origin



Danfoss A/S, 6430 Nordborg, Denmark

Add three digit prefix — **129**— to four digit number from chart for complete product number—Example 129-0382.
Orders will not be accepted without three digit prefix.

Port Location	Port Size	Mounting Holes (5)	Shaft	Displ. cm ³ /r [in ³ /r] / Product Number 129-xxxx				
				8,2 [.50]	12,9 [.79]	19,8 [1.21]	31,6 [1.93]	50,0 [3.00]
End Port Motors	9/16-18 UNF - 2B O-ring (2)	1/4-28 UNF 2B	5/8 inch Straight	129-0291	-0292	-0293	-0294	-0458
			11/16 inch Straight	129-0295	-0296	-0297	-0298	-0459
			Splined — Metric	129-0299	-0300	-0301	-0302	-0460
			3/4 inch Tapered					129-0480
	M14 x 1,5 - 6H O-ring (2)	M6 x 1 - 6H	16 mm Straight	129-0303	-0304	-0305	-0306	-0461
			18 mm Straight	129-0307	-0308	-0309	-0310	-0462
			Splined — Metric	129-0311	-0312	-0313	-0314	-0463
	G 1/4 (BSP) (2)	M6 x 1 - 6H	16 mm Straight	129-0315	-0316	-0317	-0318	-0464
			18 mm Straight	129-0319	-0320	-0321	-0322	-0465
			Splined — Metric	129-0323	-0324	-0325	-0326	-0466
	End Port* Motors	G 3/8 (BSP) (2)	M6 x 1 - 6H	16 mm Straight	129-0327	-0328	-0329	-0330
18 mm Straight				129-0331	-0332	-0333	-0334	-0468
Splined — Metric				129-0335	-0336	-0337	-0338	-0469
5/8 inch Straight				129-0339	-0340	-0341	-0342	-0470
9/16-18 UNF - 2B O-ring (2)		1/4-28 UNF 2B	11/16 inch Straight	129-0343	-0344	-0345	-0346	-0471
			Splined — Metric	129-0347	-0348	-0349	-0350	-0472
			3/4 inch Tapered					129-0481
			16 mm Straight	129-0351	-0352	-0353	-0354	-0473
M14 x 1,5 - 6H O-ring (2)		M6 x 1 - 6H	18 mm Straight	129-0355	-0356	-0357	-0358	-0474
			Splined — Metric	129-0359	-0360	-0361	-0362	-0475
			16 mm Straight	129-0363	-0364	-0365	-0366	-0476
Side Port Motors	G 1/4 (BSP) (2)	M6 x 1 - 6H	18 mm Straight					
			Splined — Metric	129-0367	-0368	-0369	-0370	-0477
			16 mm Straight	129-0371	-0372	-0373	-0374	-0403
	G 3/8 (BSP) (2)	M6 x 1 - 6H	18 mm Straight	129-0375	-0376	-0377	-0378	-0478
			Splined — Metric	129-0379	-0380	-0381	-0382	-0479

Two Bolt Mounting Flange Kit (for 3/8 inch Mounting Bolts) — Kit Number 60552 (includes 5 screws — 1/4-28 UNF - 2B)

Two Bolt Mounting Flange Kit (for M8 Mounting Bolts) — Kit Number 60553 (includes 5 screws — M6 x 1 - 6H)

*Note: The Same Casting used for Side Ports is Required for G 3/8 (BSP) End Ports (see Dwg. Page 8 and 9)

129-0479

Information contained in this catalog is accurate as of the publication date and is subject to change without notice. Performance values are typical values. Customers are responsible for selecting products for their applications using normal engineering methods.

Products we offer:

- Cartridge valves
- DCV directional control valves
- Electric converters
- Electric machines
- Electric motors
- Gear motors
- Gear pumps
- Hydraulic integrated circuits (HICs)
- Hydrostatic motors
- Hydrostatic pumps
- Orbital motors
- PLUS+1® controllers
- PLUS+1® displays
- PLUS+1® joysticks and pedals
- PLUS+1® operator interfaces
- PLUS+1® sensors
- PLUS+1® software
- PLUS+1® software services, support and training
- Position controls and sensors
- PVG proportional valves
- Steering components and systems
- Telematics

Danfoss Power Solutions is a global manufacturer and supplier of high-quality hydraulic and electric components. We specialize in providing state-of-the-art technology and solutions that excel in the harsh operating conditions of the mobile off-highway market as well as the marine sector. Building on our extensive applications expertise, we work closely with you to ensure exceptional performance for a broad range of applications. We help you and other customers around the world speed up system development, reduce costs and bring vehicles and vessels to market faster.

Danfoss Power Solutions – your strongest partner in mobile hydraulics and mobile electrification.

Go to www.danfoss.com for further product information.

We offer you expert worldwide support for ensuring the best possible solutions for outstanding performance. And with an extensive network of Global Service Partners, we also provide you with comprehensive global service for all of our components.

Local address:

Hydro-Gear

www.hydro-gear.com

Daikin-Sauer-Danfoss

www.daikin-sauer-danfoss.com

**Danfoss
Power Solutions (US) Company**
2800 East 13th Street
Ames, IA 50010, USA
Phone: +1 515 239 6000

**Danfoss
Power Solutions GmbH & Co. OHG**
Krokamp 35
D-24539 Neumünster, Germany
Phone: +49 4321 871 0

**Danfoss
Power Solutions ApS**
Nordborgvej 81
DK-6430 Nordborg, Denmark
Phone: +45 7488 2222

**Danfoss
Power Solutions Trading
(Shanghai) Co., Ltd.**
Building #22, No. 1000 Jin Hai Rd
Jin Qiao, Pudong New District
Shanghai, China 201206
Phone: +86 21 2080 6201